

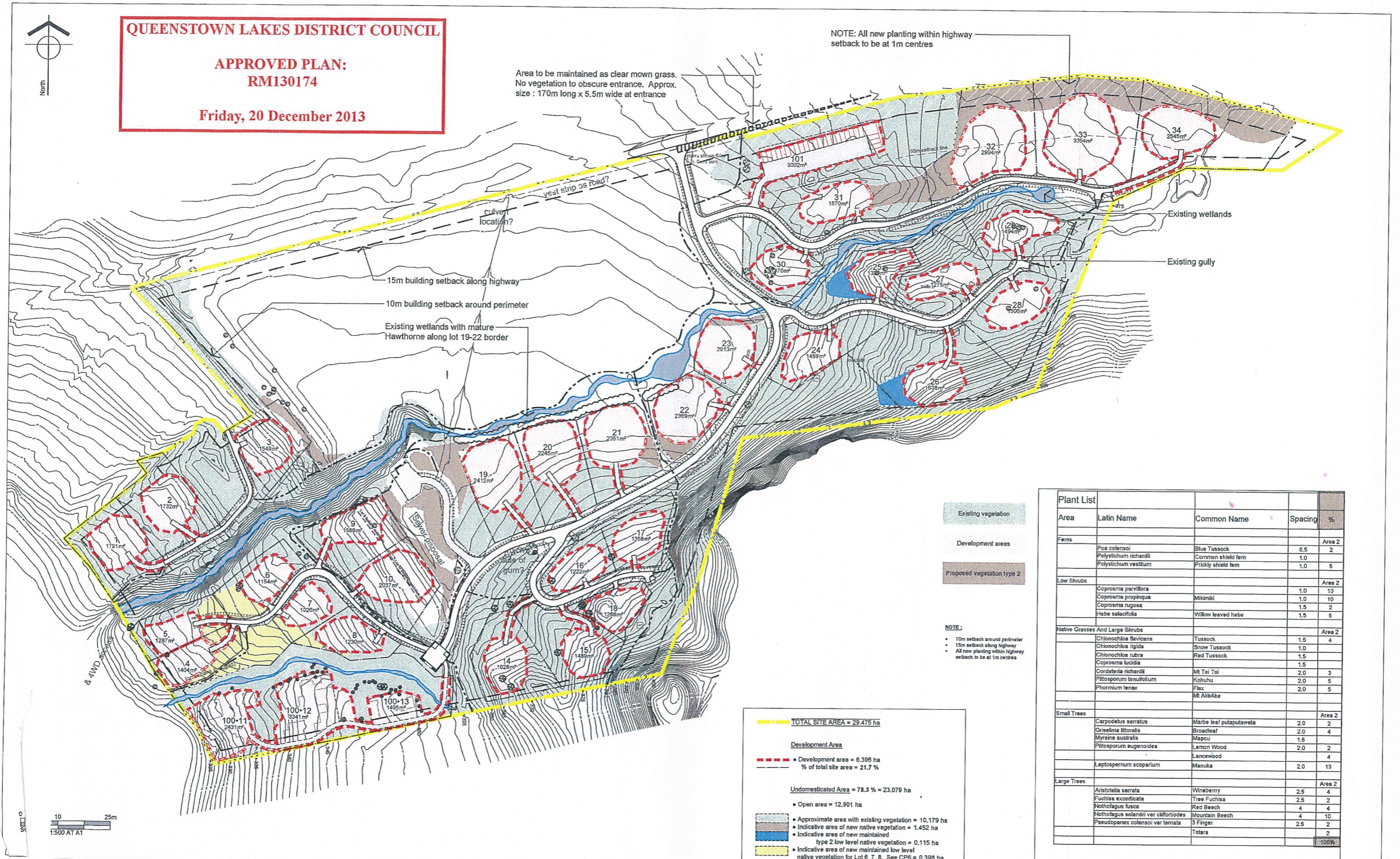
QUEENSTOWN LAKES DISTRICT COUNCIL

APPROVED PLAN:  
RM130174

Friday, 20 December 2013

NOTE: All new planting within highway  
setback to be at 1m centres

Area to be maintained as clear mown grass.  
No vegetation to obscure entrance. Approx.  
size : 170m long x 5.5m wide at entrance



- Existing vegetation
  - Development areas
  - Proposed vegetation type 2
- NOTE:
- 10m setback around perimeter
  - 15m setback along highway
  - All new planting within highway setback to be at 1m centres

**TOTAL SITE AREA = 29.475 ha**

**Development Area**

- Development area = 6.395 ha
- % of total site area = 21.7 %

**Undomesticated Area = 78.3 % = 23.079 ha**

- Open area = 12.901 ha
- Approximate area with existing vegetation = 10.179 ha
- Indicative area of new native vegetation = 1.452 ha
- Indicative area of new maintained type 2 low level native vegetation = 0.115 ha
- Indicative area of new maintained low level native vegetation for Lot 6, 7, 8. See CP6 = 0.395 ha

Total % of undomesticated area to be maintained as closed canopy native vegetation = 50.4 %

**Additional Information**

- 5.5m wide main carriageway, 12m boundary = 0.920 ha
- Footpaths length = 2116 m
- Approximate area of vegetation removed within residential development areas = .132 ha
- Total lot area for all 35 lots = 13.150 ha

Area	Latin Name	Common Name	Spacing	%
<b>Ferns</b>				
	<i>Poa colensoi</i>	Blue Tussock	0.5	2
	<i>Polystichum richardii</i>	Common shield fern	1.0	2
	<i>Polystichum vestitum</i>	Prickly shield fern	1.0	5
<b>Low Shrubs</b>				
	<i>Coprosma parviflora</i>		1.0	10
	<i>Coprosma propinqua</i>	Mikimiki	1.0	10
	<i>Coprosma rugosa</i>		1.5	2
	<i>Hebe salicifolia</i>	Willow leaved hebe	1.5	5
<b>Native Grasses And Large Shrubs</b>				
	<i>Chionochloa flavicans</i>	Tussock	1.5	4
	<i>Chionochloa rigida</i>	Snow Tussock	1.0	
	<i>Chionochloa rubra</i>	Red Tussock	1.5	
	<i>Coprosma lucida</i>		1.5	
	<i>Cordarteria richardii</i>	Mt Tei Toi	2.0	3
	<i>Ptilosporum tenuifolium</i>	Kohuhu	2.0	5
	<i>Phormium tenax</i>	Flax	2.0	5
		Mt AkeAke		
<b>Small Trees</b>				
	<i>Carpodetus serratus</i>	Marbe leaf putaputaveta	2.0	2
	<i>Griselinia littoralis</i>	Broadleaf	2.0	4
	<i>Myrsine australis</i>	Mapou	1.5	
	<i>Pittosporum eugenoides</i>	Lemon Wood	2.0	2
		Lancewood		4
	<i>Leptospermum scoparium</i>	Manuka	2.0	13
<b>Large Trees</b>				
	<i>Aristotelia serrata</i>	Wineberry	2.5	4
	<i>Fuchsia excorticata</i>	Tree Fuchsia	2.5	2
	<i>Nothofagus fusca</i>	Red Beech	4	4
	<i>Nothofagus solandri var cliffortioides</i>	Mountain Beech	4	10
	<i>Pseudopanax colensoi var temata</i>	3 Finger	2.5	2
		Totara		2
				100%

TUI HEIGHTS - EXISTING VS PROPOSED VEGETATION

1748-CP3 SCALE = 1:1500 AT A1 / 1:3000 AT A3 18 Nov 2013

