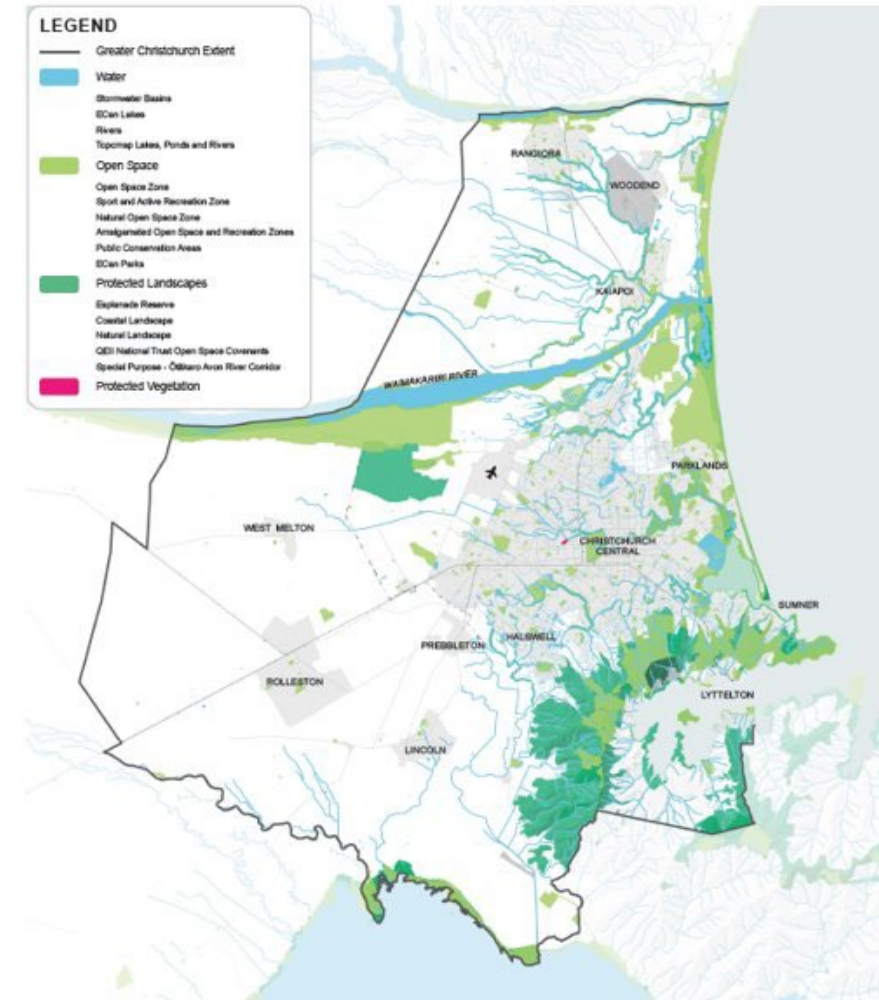


QLDC Blue Green Network Plan

What is a Blue Green Network?

- > The Blue-Green Network is the grouping of all the parks, open spaces, connections, and accessible waterways that deliver a variety of educational, recreational, ecological, cultural, landscape and health benefits.
- > The Blue Green Network will set out the level of provision of open space and connections needed in each community to deliver a sustainable quality open space network.
- > It will respond to the anticipated growth and provide the community with access to a range of recreational, social, cultural, and environmental experiences.



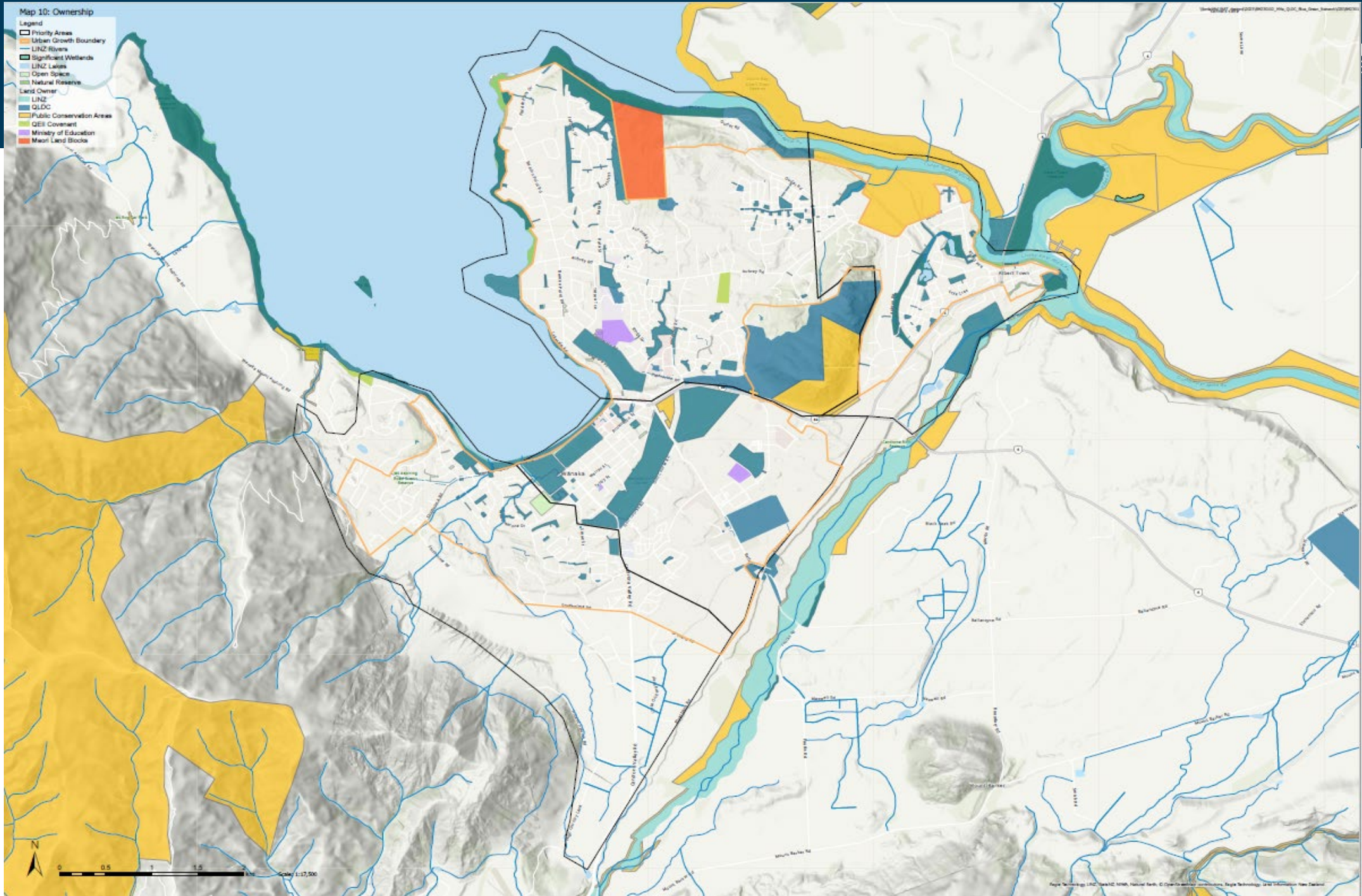
Why are we doing this?

- > Provide a **framework for a well-connected, diverse, and inclusive network** of open spaces and blue networks.
- > To create **sustainable, resilient, and liveable urban environments** that benefit both **people and nature**.
- > Enhance the **quality of life**, provide recreational opportunities, **preserve natural resources**, promote **community identity**, and foster **social equity** within a community.
- > To guide the **development, management, and utilisation** of the blue green network and used to **determine and prioritise spending**.



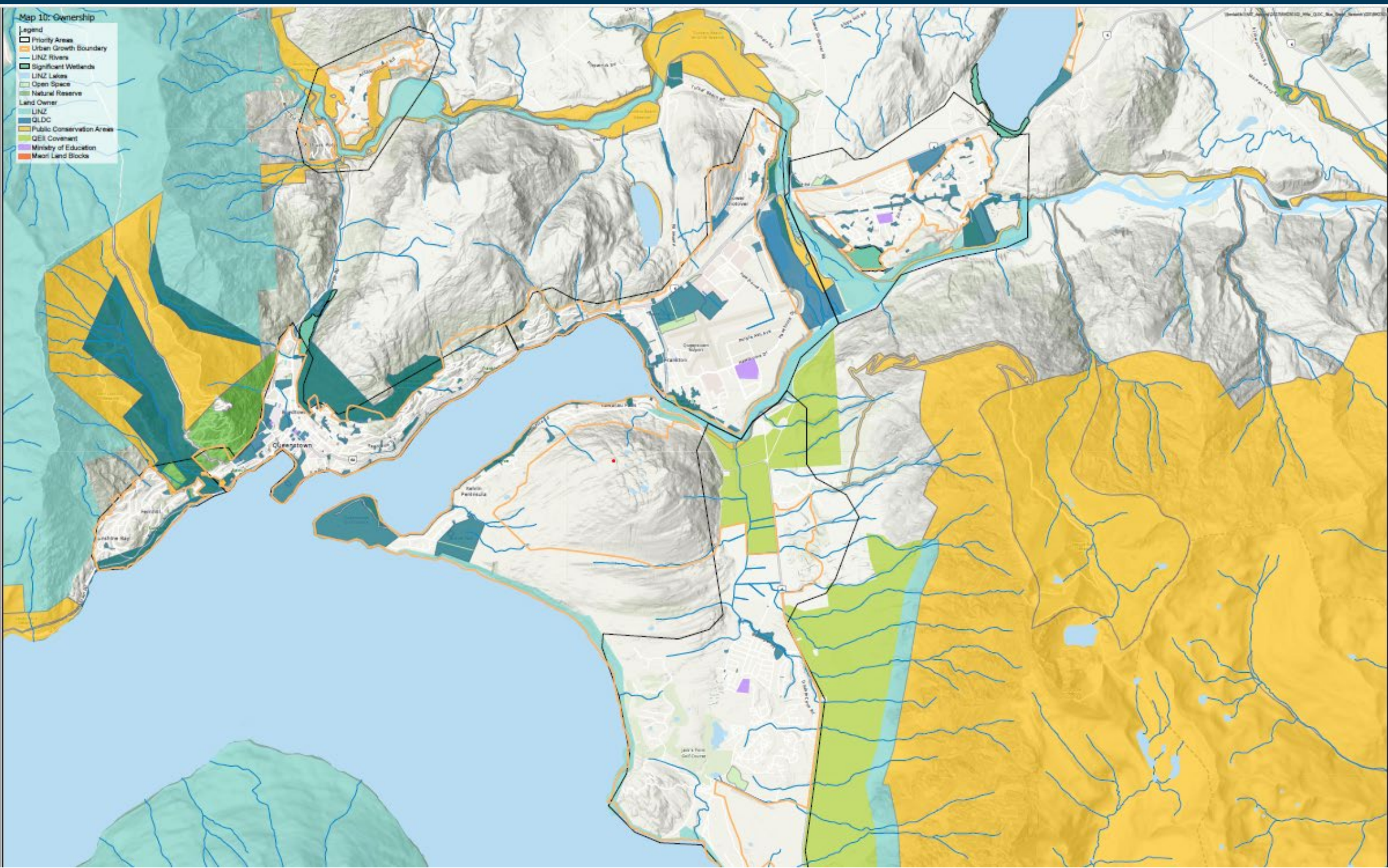
Map 10: Ownership

- Legend
- Priority Areas
 - Urban Growth Boundary
 - LINZ Rivers
 - Significant Wetlands
 - LINZ Lakes
 - Open Space
 - Natural Reserve
 - Land Owner
 - LINZ
 - QLDC
 - Public Conservation Areas
 - QEII Covenant
 - Ministry of Education
 - Mean Land Blocks

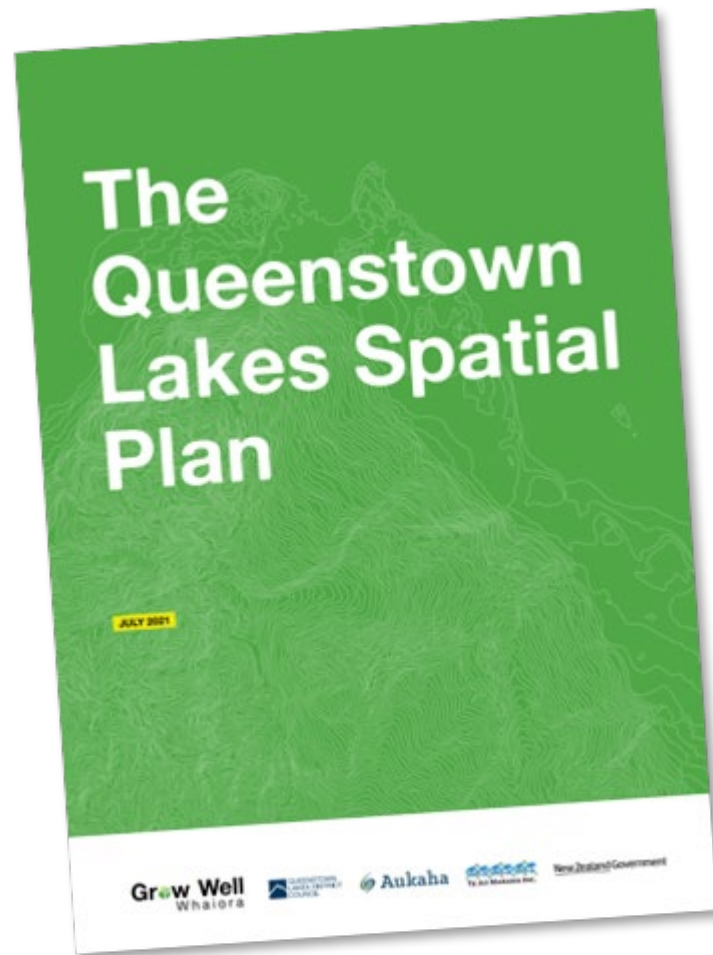


Map 10: Ownership

- Legend
- Priority Areas
- Urban Growth Boundary
- LINZ Rivers
- LINZ Lakes
- Significant Wetlands
- Open Space
- Natural Reserve
- Land Owner
- LINZ
- QLDC
- Public Conservation Areas
- QEII Covenant
- Ministry of Education
- Māori Land Blocks



How does this align with other QLDC plans?



| | | | | | |
|-------------------|---|---|---|--|---|
| GOAL | Grow Well Whaiora | | | | |
| PRINCIPLES | HAUORA WELLBEING Decisions about growth recognise social, economic, environmental and cultural considerations | AUMANGEA RESILIENCE Ensuring communities and visitors are resilient to shocks of the future, including adapting to climate change | WHAKAUKU SUSTAINABILITY Programmes and activities are delivered according to sustainable development principles and work towards zero emissions | | |
| | CONSOLIDATED APPROACH AND SPATIAL ELEMENTS: Illustrate how and where the area will grow | | | | |
| OUTCOMES | Consolidated growth and more housing choice | Public transport, walking and cycling is the preferred option for daily travel | A sustainable tourism system | Well-designed neighbourhoods that provide for everyday needs | A diverse economy where everyone can thrive |
| | STRATEGIES to achieve the outcomes | | | | |

Spatial Plan Relationships

Delivering the Spatial Plan

Delivering the Spatial Plan will require coordination and collaboration between the Partners, and will build on the process used to develop this Spatial Plan.

The Queenstown Lakes Partnership will develop a draft joint work programme to advance the priority initiatives identified in the Spatial Plan. A range of mechanisms will deliver the initiatives, including budget. An implementation plan will be developed that sets out responsibilities and timeframes for delivering the initiatives. This will be reviewed annually to progress delivery of the joint work programme.

The Spatial Plan will be reviewed and updated in 2024.

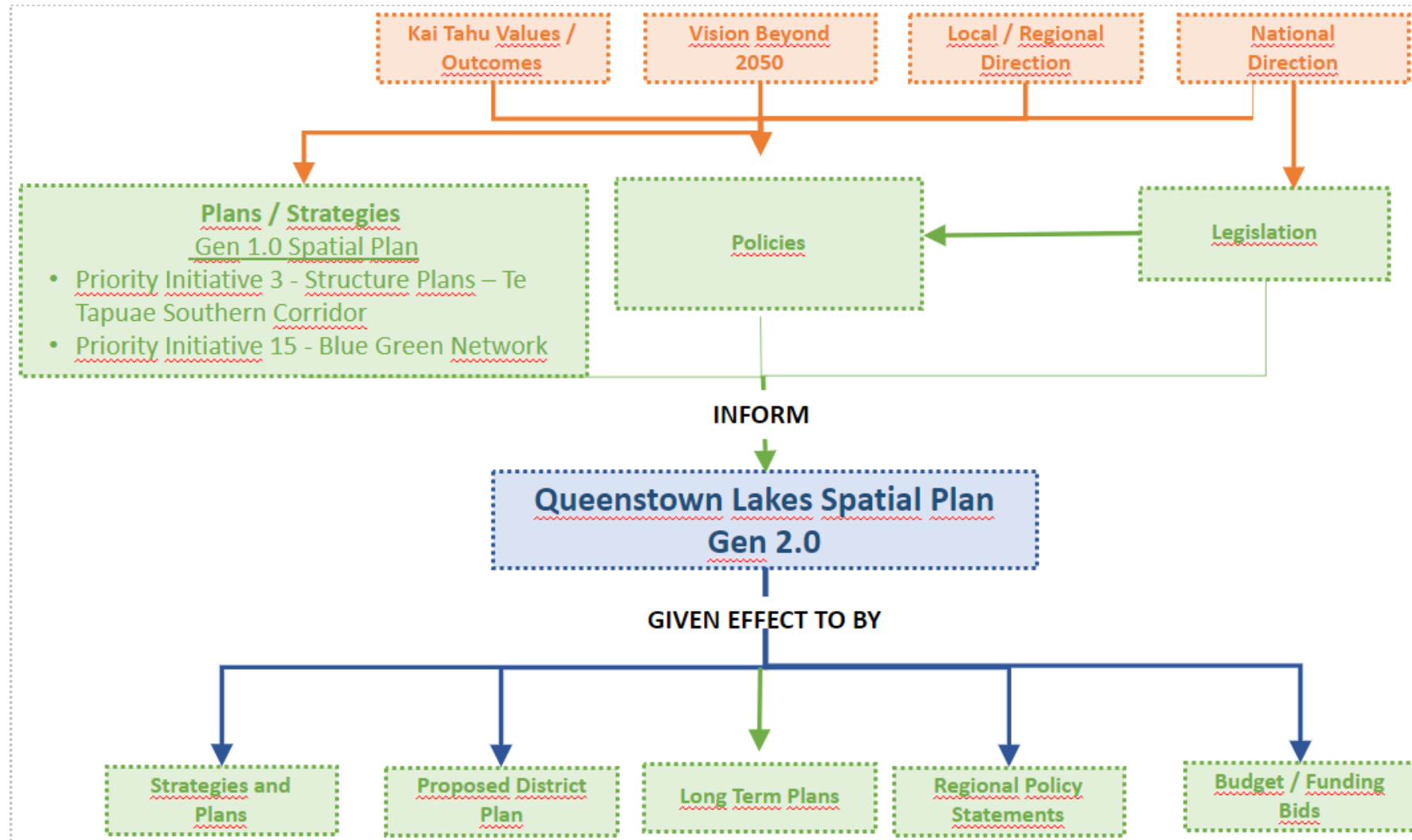
| Grow Well Whalora Partnership: Joint Work Programme | | | | | |
|--|---|--|--|--|--|
| Spatial Plan Outcomes | Consolidated growth and more housing choice | Public transport, walking and cycling in the preferred option for daily travel | A sustainable tourism system | Well developed neighbourhoods that meet community needs | A diverse economy where everyone can thrive |
| 1. Revise zoning and other levers to enable higher densities and more flexible use of land within the existing and new urban areas in identifiable locations identified in the Spatial Plan. | 6. Complete and implement the Queenstown Transport Business Case including the delivery of the frequent transit network | 11. Develop and implement a Destination Management Strategy to sign, decrease making and investment with sustainable development principles. | 16. Develop a local community facilities, parks and recreation and community walking strategies and plans | 20. Develop an Economic Diversification Plan | 25. Support the Regional Economic Development Network to continue to deliver nationally connected initiatives. |
| 2. Use the Grow Well Whalora Urban Growth Partnership to improve alignment and coordination to unlock joint priority development areas, including: <ul style="list-style-type: none"> Lakeside Plan Mile Urban Corridor Queenstown Teahouse to Transition Corridor Southern Corridor Whakapa Teahouse to Three Parks Corridor | 7. Complete and implement a noise abatement plan for Queenstown including best demand management measures | 12. Implement a try on visitor accommodation across the Queenstown Lakes | 17. Develop a Grow-over design guide to improve the quality of built form and enhance the town's cultural values. | 26. Review and update the zoning of centres and major employment locations in the District Plan to be consistent with the Spatial Plan | 31. Establish a Queenstown Lakes utility infrastructure providers forum to improve coordination with Spatial Plan outcomes and resources of the networks |
| 3. Identify structure plans for future urban areas identified in the Spatial Plan, including identifying infrastructure triggers needed to enable and sequence new growth areas. Ensure the development of future urban areas prioritise the delivery of affordable housing outcomes. | 8. Investigate and produce the extension of the frequent transit network to Hema/Kalbar Park and the Southern Corridor | 13. Develop and implement a Tourism Based Demand Strategy to encourage the use of public and active modes by visitors | 14. Investigate establishing a high-speed public transport network that provides for both local residents and visitor needs. | 21. Identify and ensure the efficient operation of main freight routes by developing a Network Operating Plan | 32. Identify and ensure the efficient operation of main freight routes by developing a Network Operating Plan |
| 4. Use of alternative funding and financing tools to accelerate infrastructure delivery | 9. Complete the Whakapa and Upper Clutha Active Travel Networks | 14. Investigate establishing a high-speed public transport network that provides for both local residents and visitor needs. | 15. Investigate establishing a high-speed public transport network that provides for both local residents and visitor needs. | | |
| 5. Establish a coordinated programme that draws together central government, community providers, iwi and council projects and initiatives to improve affordable housing outcomes | 10. Investigate establishing Upper Clutha and Sub-Regional public transport networks. | | | | |

MONITORING PROGRAMME
Tracking Progress of the delivery of the Priority Initiatives
Tracking growth against the spatial elements and outcomes of the Spatial Plan

3. Undertake structure plans for future urban areas identified in the Spatial Plan, including identifying infrastructure triggers needed to enable and sequence new growth areas. Ensure the development of future urban areas prioritise the delivery of affordable housing options.

15. Develop open space network plans to deliver the Blue-Green Networks.

Spatial Plan Relationships



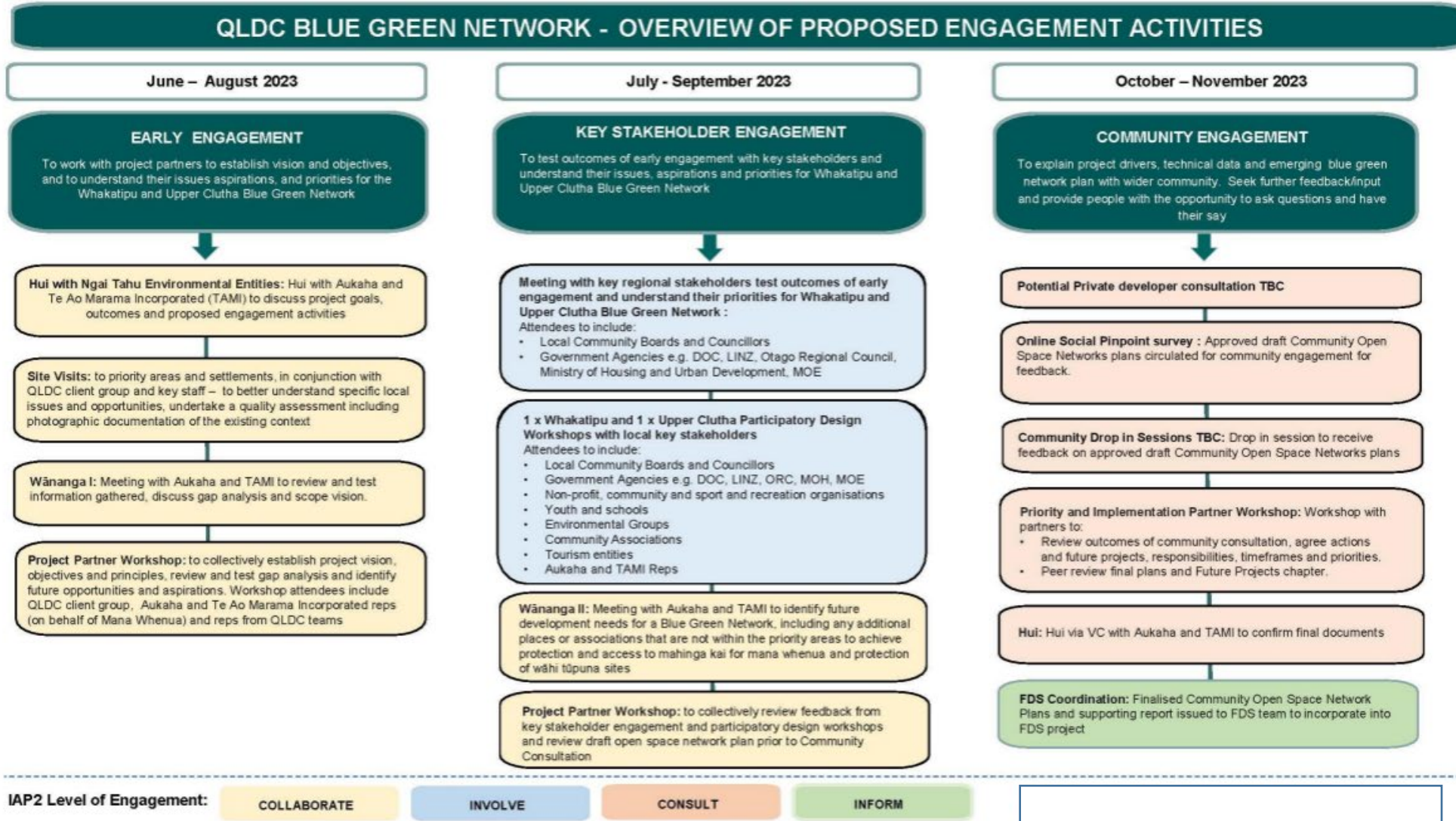
Blue Green Network Programme

■ MEETING*
 ■ WORKSHOP
 ○ DESIGN WORKS
 ● DELIVERABLES

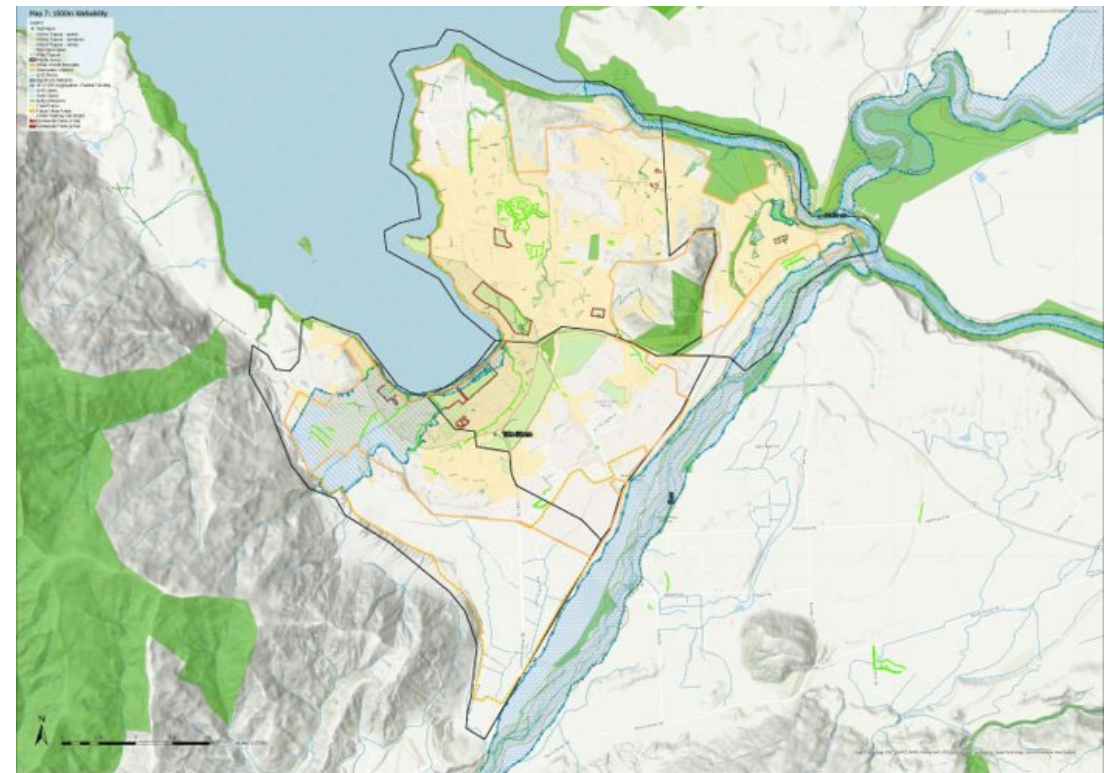
* Fortnightly project meetings assumed throughout project



Engagement

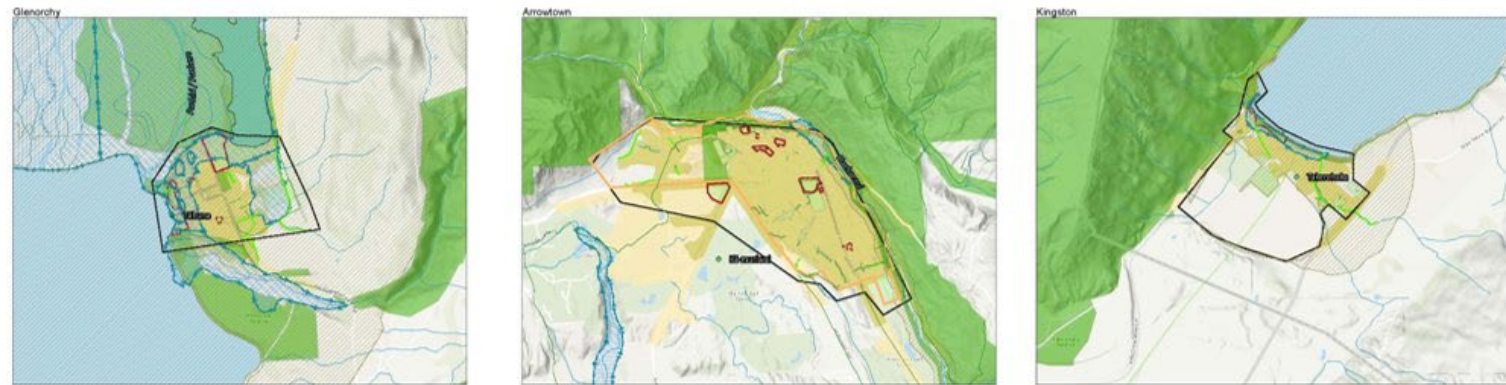
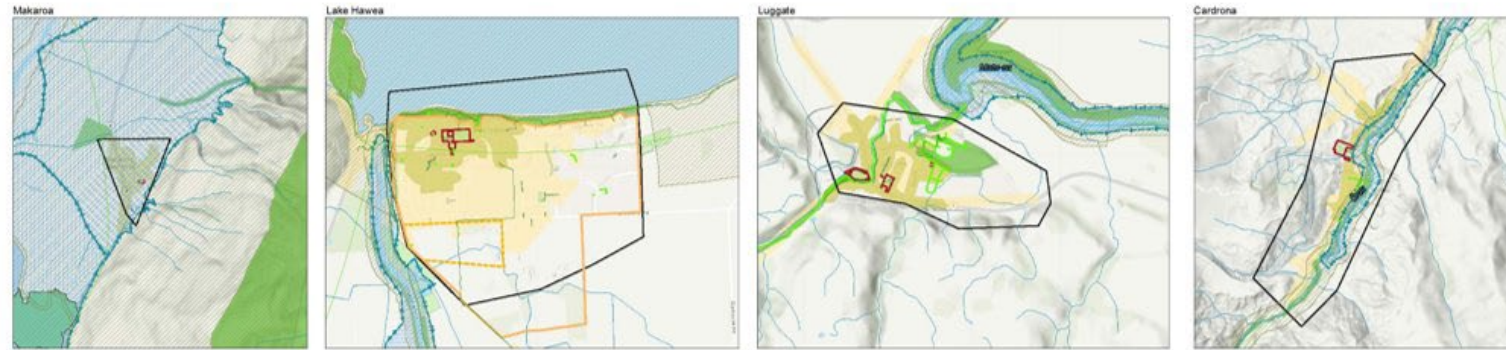


Community Open Space Network Plans



Community Open Space Network Plans

UPPER CLUTHA



- Legend
- Ngā Ngā
 - Ngā Ara Tapaka - Ngā ara
 - Ngā Ara Tapaka - Rāwhiri
 - Ngā Ara Tapaka - Kōwhiri
 - Ngā Ngā (line)
 - Ngāhi Tapaka
 - Priority Areas
 - Urban Growth Boundary
 - Stormwater Channel
 - LNZ Rivers
 - Significant Wetlands
 - 2012 ORC Aggregation - Rainfall Flooding
 - LNZ Lakes
 - Open Space
 - Natural Reserve
 - Transits/Tracks
 - Future Urban Areas
 - 1500m Walking Catchment
 - 300m Walking Catchment
 - Local Park (0.5000ha)
 - Local Park (1.0000ha)
 - Community Park (2.0000ha)
 - Community Park (5.0000ha)



QUESTIONS?

