

OPTIONS FOR THE TOWN CENTRE

The Wanaka Town Centre Masterplan will focus on bringing the community's vision to life. As we continue work on the draft Masterplan over the coming months, we'll need your help and insights. We'd love to hear your thoughts on the options presented here and whether you think there's anything we've missed.

Head to letstalk.qldc.govt.nz to share your views.

GATEWAYS



The Wanaka town centre arrival experience is currently underwhelming and is dominated by roads and infrastructure. Vehicles are not required to slow down when entering town which contributes to a town centre that focuses on vehicles rather than people.

To enhance the experiences of locals and visitors as they enter town a series of gateways are proposed which:

- + Provide the threshold between the town centre and surrounding neighbourhoods
- + Have posted speed limit changes to 30km within the town centre to enhance the pedestrian experience and safety
- + Reflect the qualities of Wanaka with plantings, signage and public art
- + Have road layout changes to direct traffic to car parking locations and through traffic along Brownston Street

EAST/WEST AND NORTH/SOUTH STREETS



To retain and enhance the connection of the town centre and the inspiring landscapes that surround it, we are proposing a network of streets that bring the qualities of the landscape into the town centre while maintaining views out into the landscape.

This will include:

- + Views to Lake Wanaka and the mountains beyond will be maintained along the north/south 'Blue Streets' across the town centre
- + The surrounding landscape will be reflected in tree lined east/west 'Green Streets' which will also draw Pembroke Park into the town centre



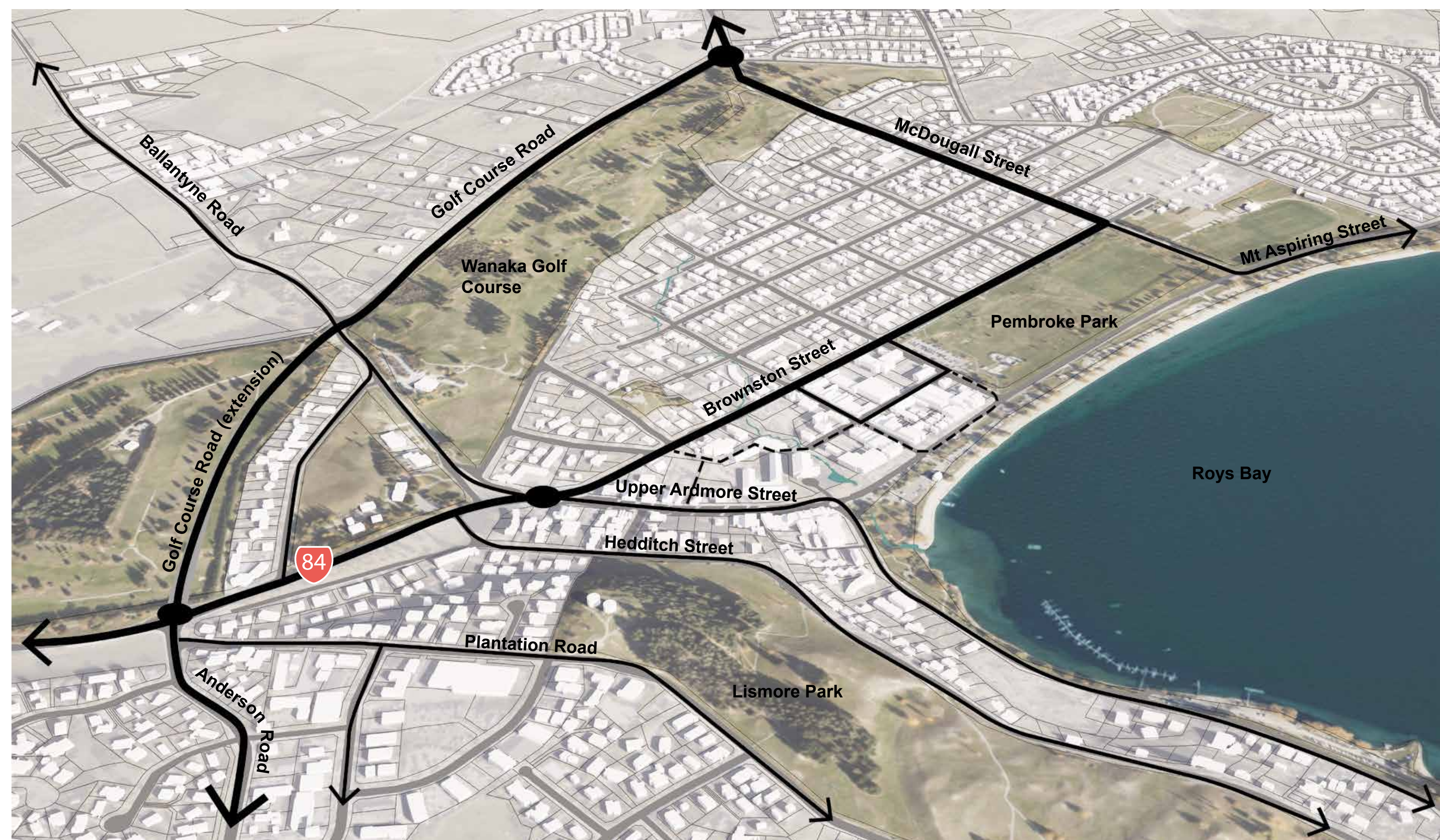
OPTIONS FOR THE TOWN CENTRE

Wanaka's lake front and town centre are currently dominated by traffic and parked vehicles. There is a desire to improve how it looks and feels, as well as improving pedestrian access and parking facilities in Wanaka. To achieve this, changes to the road network and parking will need to be made.

MOVEMENT



To enhance the town centre and lake front, it is proposed to close off parts of Ardmore Street to through traffic. This will require changes to Brownston Street in order to retain vehicle access to the town centre and surrounding area. For cross town journeys, Brownston Street will be more important as well as an improved link between Anderson Road and Golf Course Road either via Macpherson Street, or a new road corridor through the Golf Course.



PARKING



Parking will need to be relocated and managed better.

Shifting parking away from the lake front will enhance the amenity of the area and provide a better experience for residents and visitors. To balance this loss of parking, a number of alternative locations for new parking areas have been considered.

- A** Approximately 200 additional parking spaces on the corner of Stratford Terrace and Ballantyne Road within the Wanaka Golf Course grounds
- B** Approximately 250 additional parking spaces adjacent to Hedditch Street
- C** Approximately 250 parking spaces within a new multi-storey parking building on the existing council carpark behind Brownston Street
- D** Approximately 400 spaces on the backside of Pembroke Park

