

## Attachment D

# POLICE OCCURRENCES WHERE ALCOHOL WAS A CONTRIBUTING FACTOR

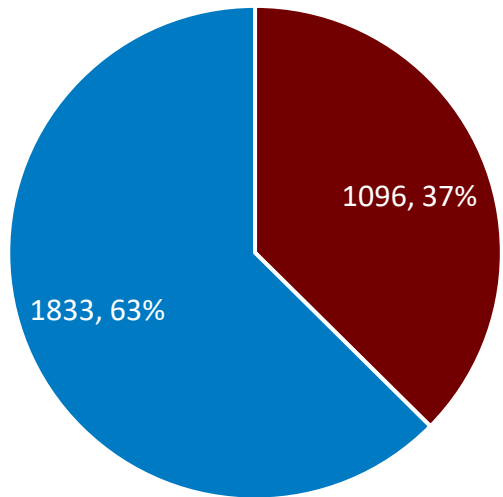
This data examines Queenstown and Wānaka **Emerging Hotspots**, the proportion of Occurrences within the main **Liquor Ban Zones**, the distribution of **Crime Types**, patterns for the **Day of the Week** and **Hour of Day**, **seasonality** by Month and Year, and the distribution of Occurrences **per shift**.

17/02/2023

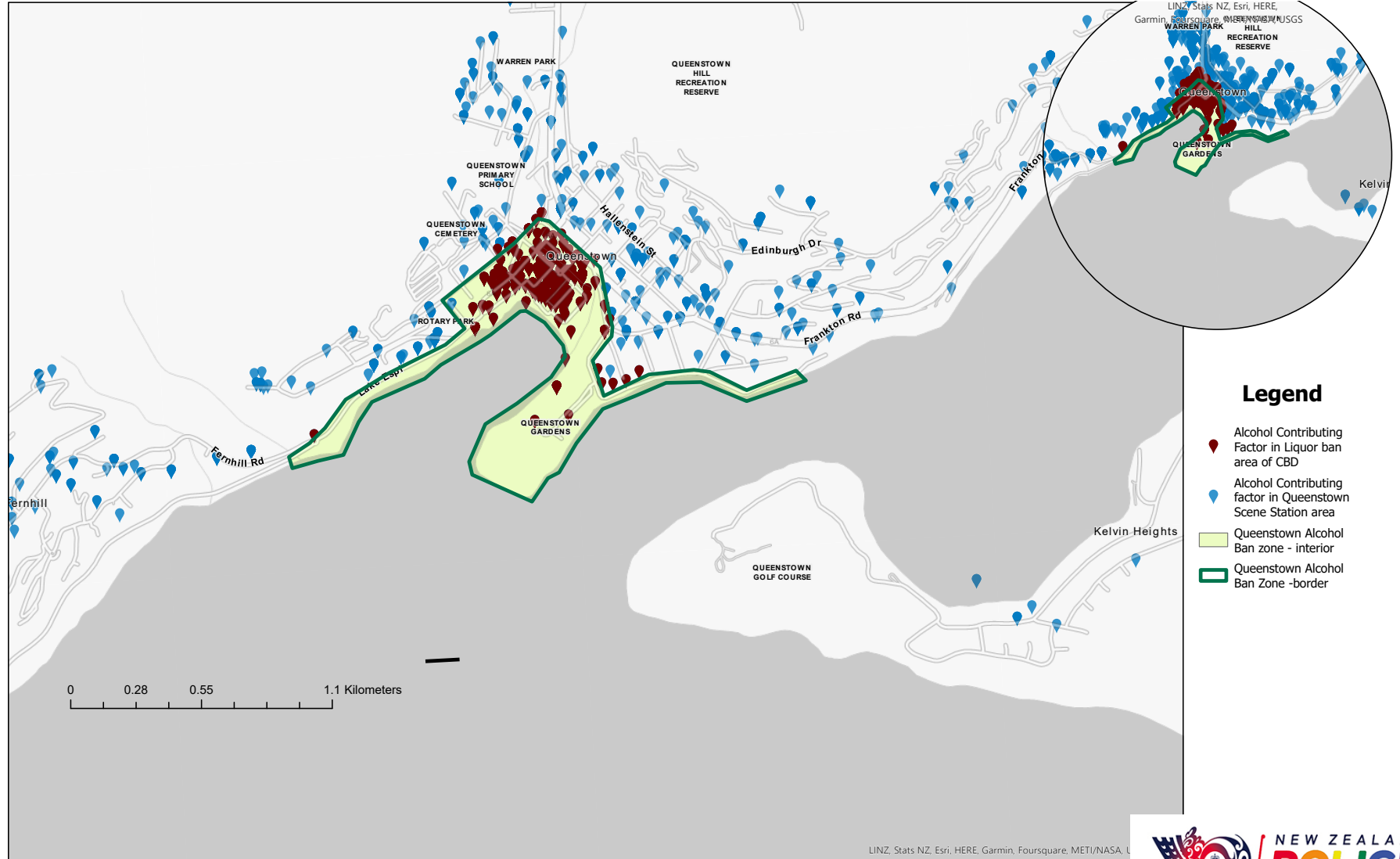
IN CONFIDENCE

This measures all reported occurrences between 2020-2022, at Queenstown scene station, where alcohol was a contributing factor

# Ban area



■ Inside ban area ■ Outside ban area



17/02/2023

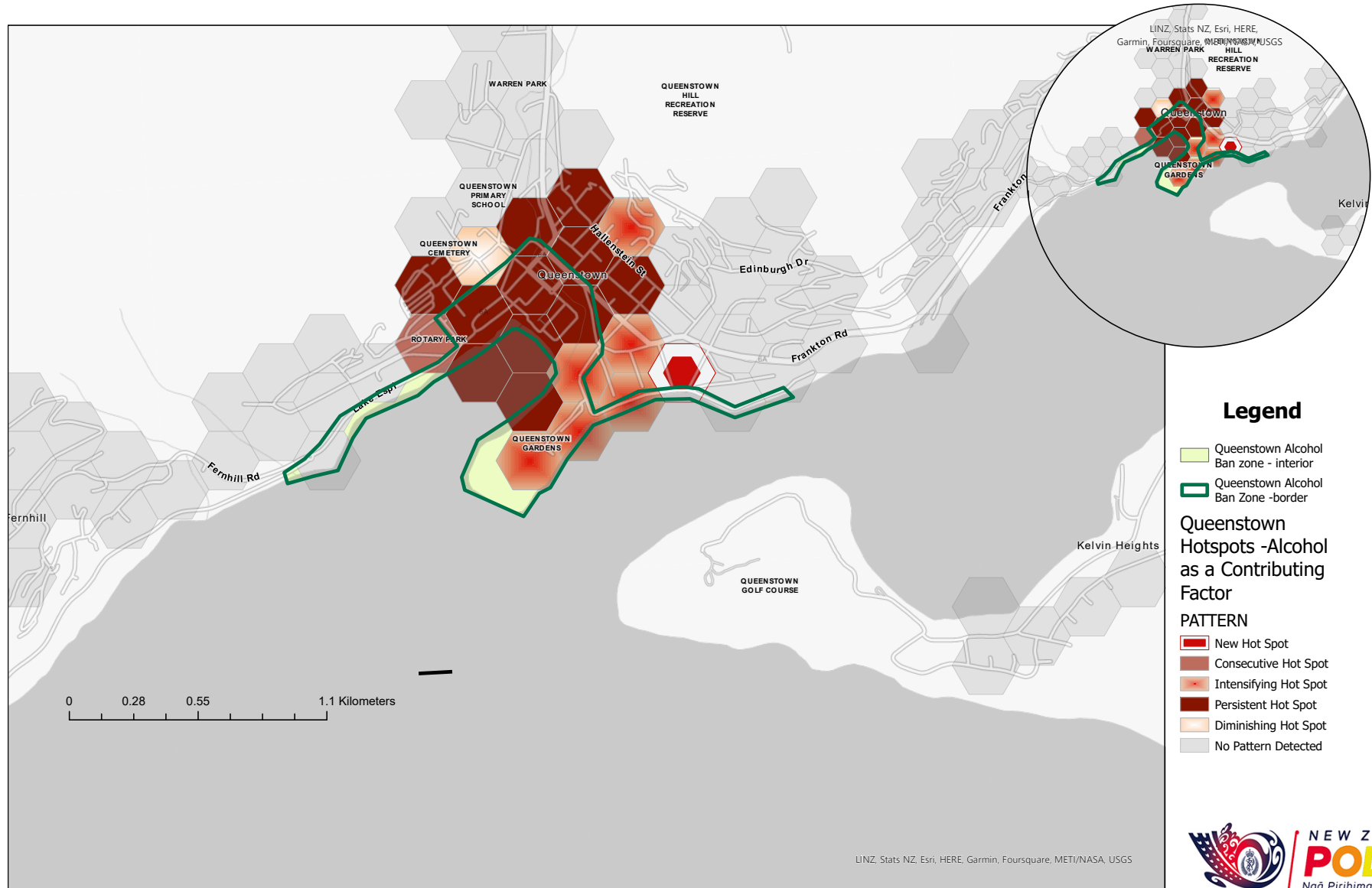
IN CONFIDENCE



SOUTHERN DISTRICT INTELLIGENCE

This measures all calls for service between 2020-2022, at Queenstown scene station, where alcohol was a contributing factor, which were not further reported (K1 or K3).

# Hot spots



- Legend**
- Queenstown Alcohol Ban zone - interior
  - Queenstown Alcohol Ban Zone -border
- Queenstown Hotspots -Alcohol as a Contributing Factor**
- PATTERN**
- New Hot Spot
  - Consecutive Hot Spot
  - Intensifying Hot Spot
  - Persistent Hot Spot
  - Diminishing Hot Spot
  - No Pattern Detected

17/02/2023

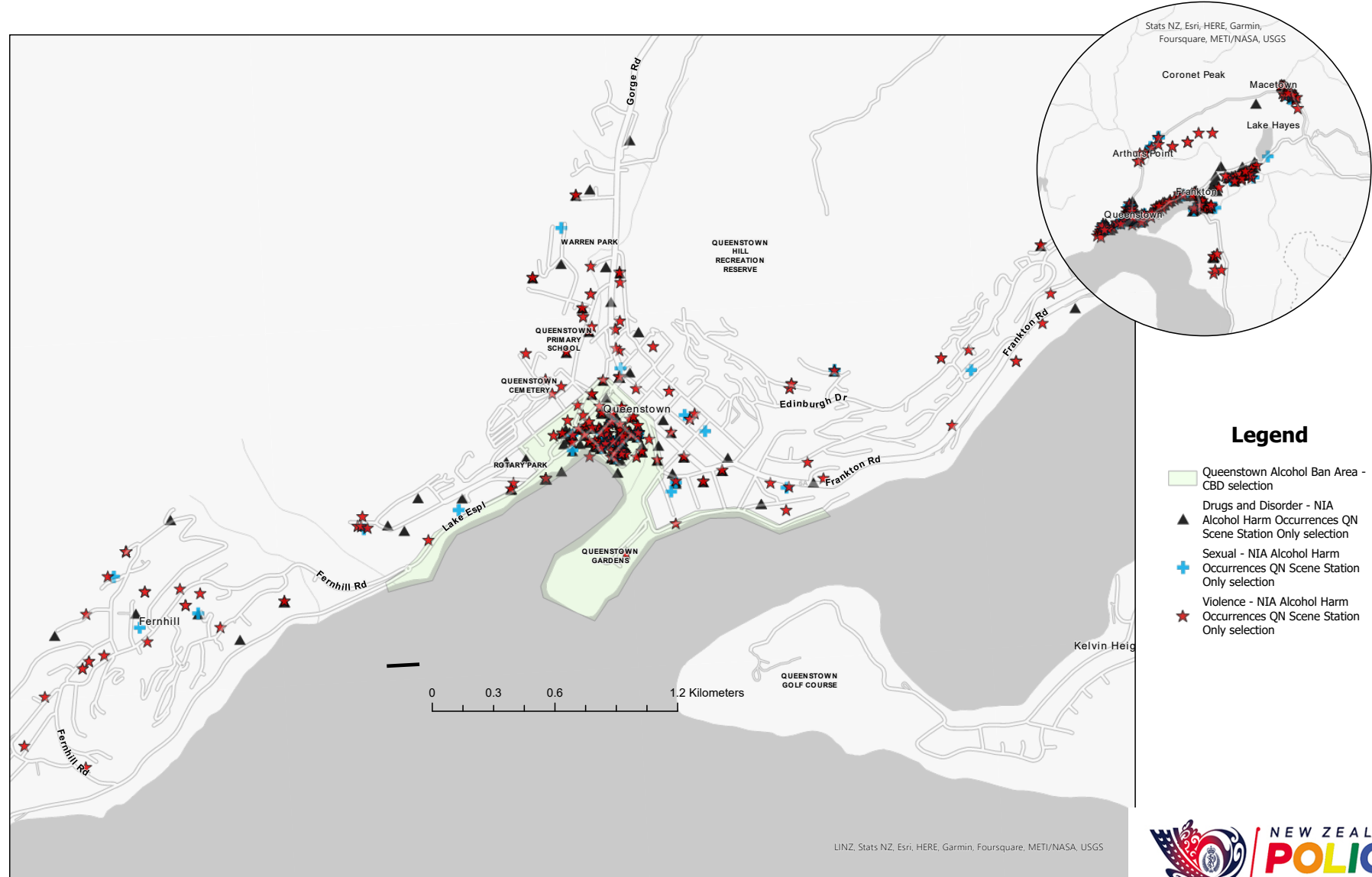
IN CONFIDENCE



SOUTHERN DISTRICT INTELLIGENCE

This measures Drugs and Disorder, Sexual Offences, and Violence reported occurrences between 2020-2022, at Queenstown scene station, where alcohol was a contributing factor

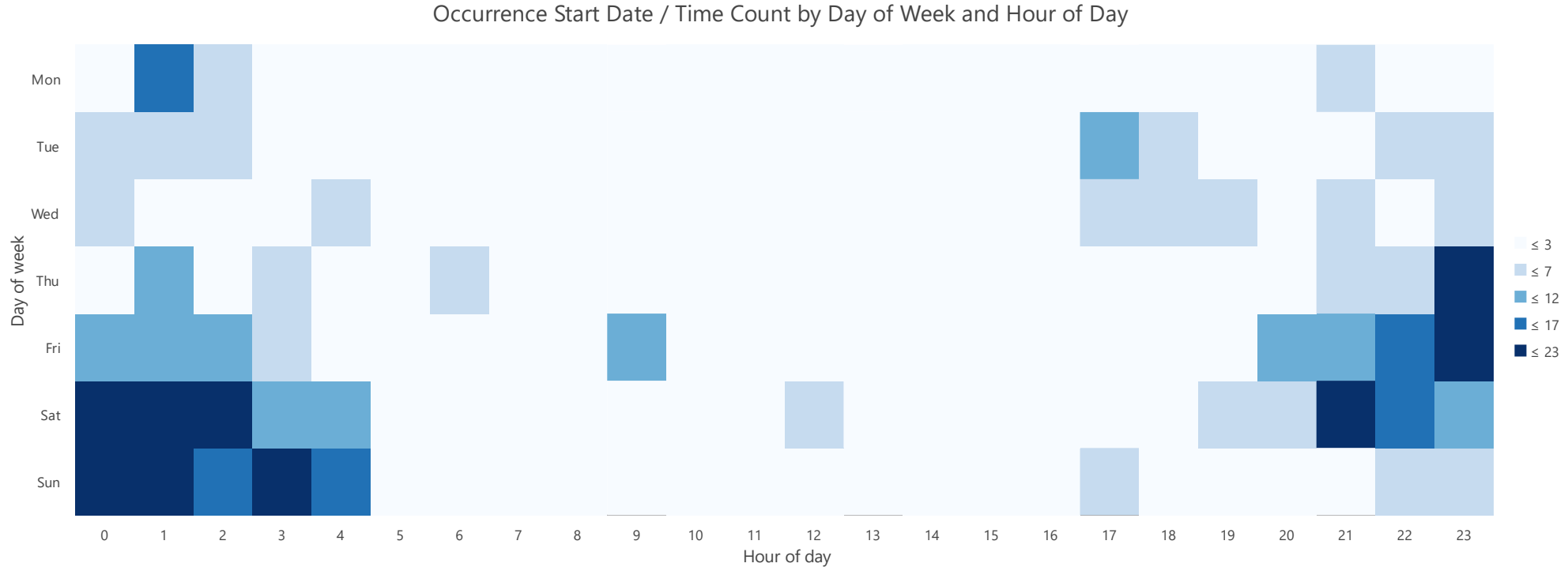
# Crime types





This measures Violence reported occurrences between 2020-2022, at Queenstown scene station, where alcohol was a contributing factor

# Day and hour



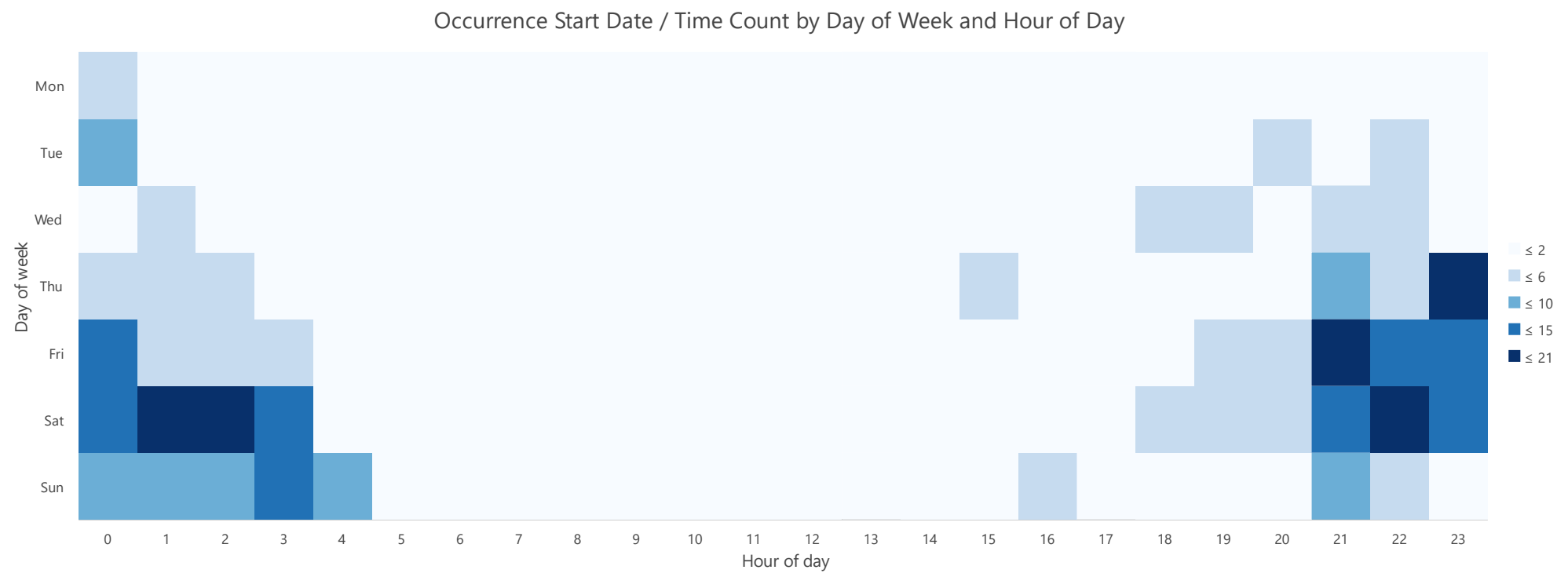
# Violence

17/02/2023

IN CONFIDENCE

This measures Drugs & Disorder reported occurrences between 2020-2022, at Queenstown scene station, where alcohol was a contributing factor

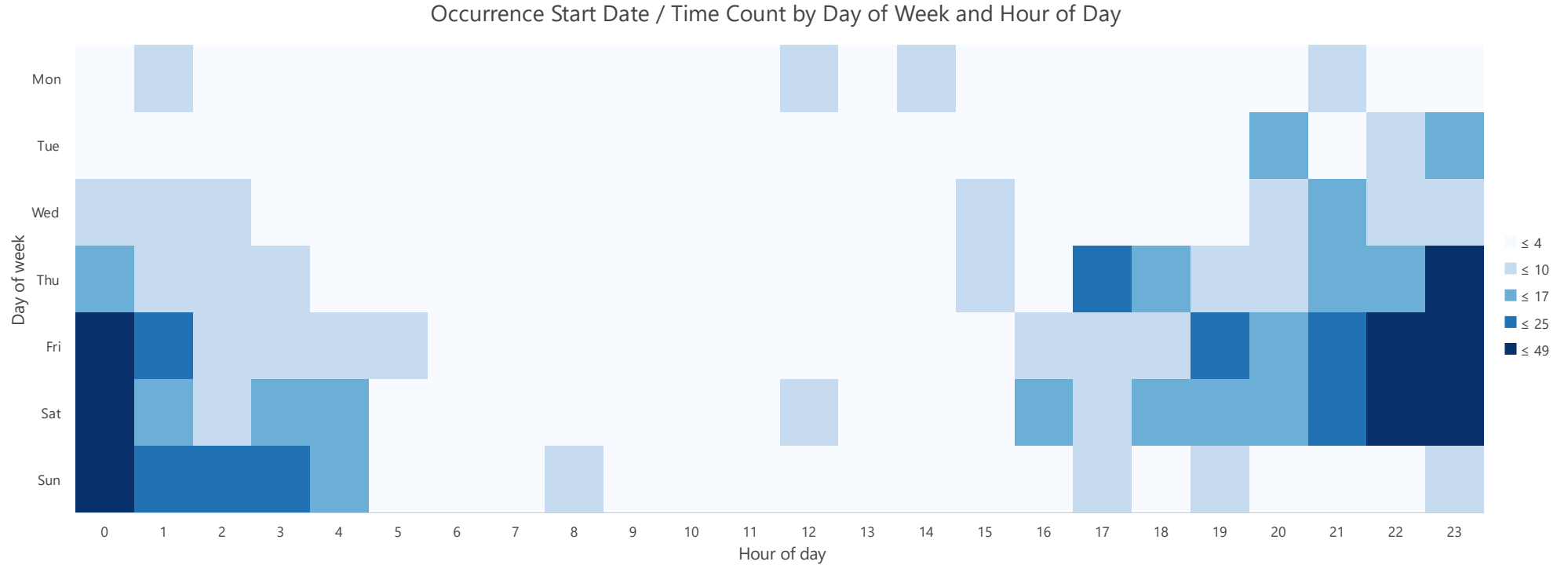
# Day and hour



# Drugs & Disorder

This measures Traffic Offences between 2020-2022, at Queenstown scene station, where alcohol was a contributing factor

# Day and hour

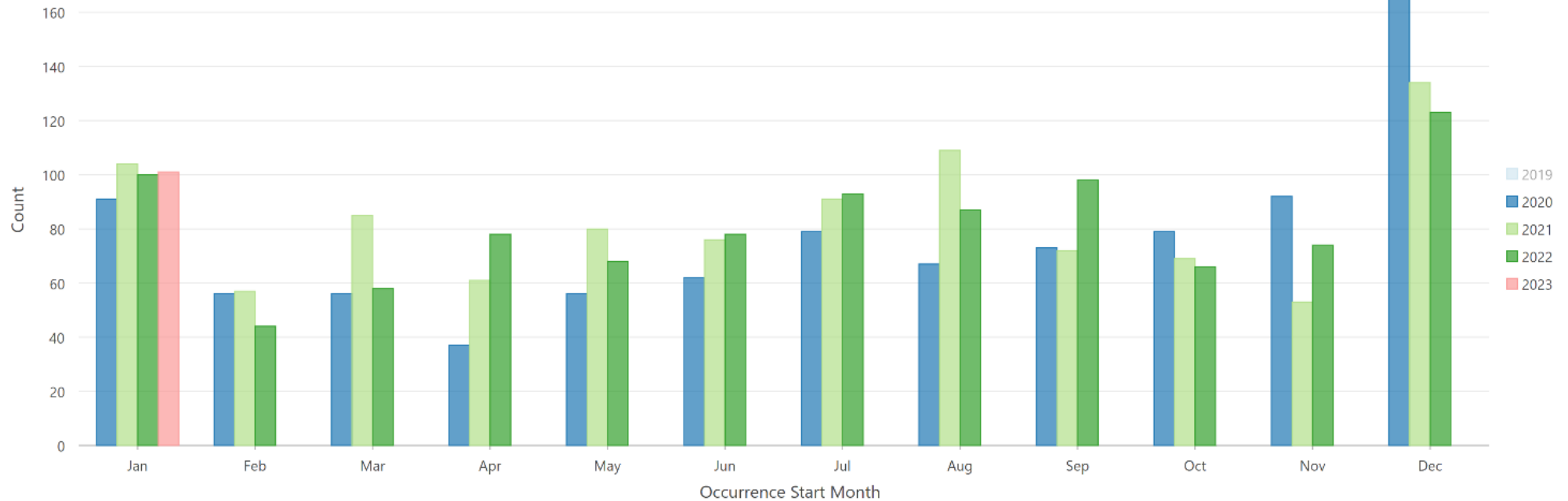


# Traffic offences

This measures all reported occurrences between 2020-2022, at Queenstown scene station, where alcohol was a contributing factor

# Month and year

Comparison of data counts by Occurrence Start Month and Occurrence Start Calendar Year

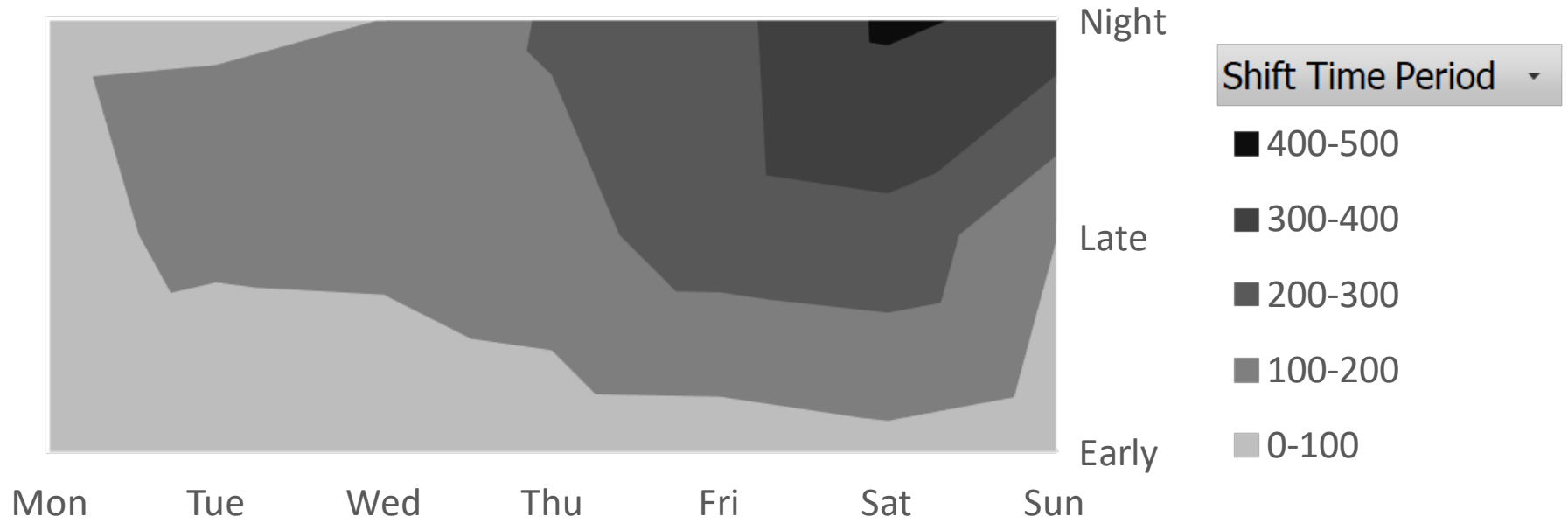


This measures all reported occurrences between 2020-2022, at Queenstown scene station, where alcohol was a contributing factor

# Day and shift

Sum of Count

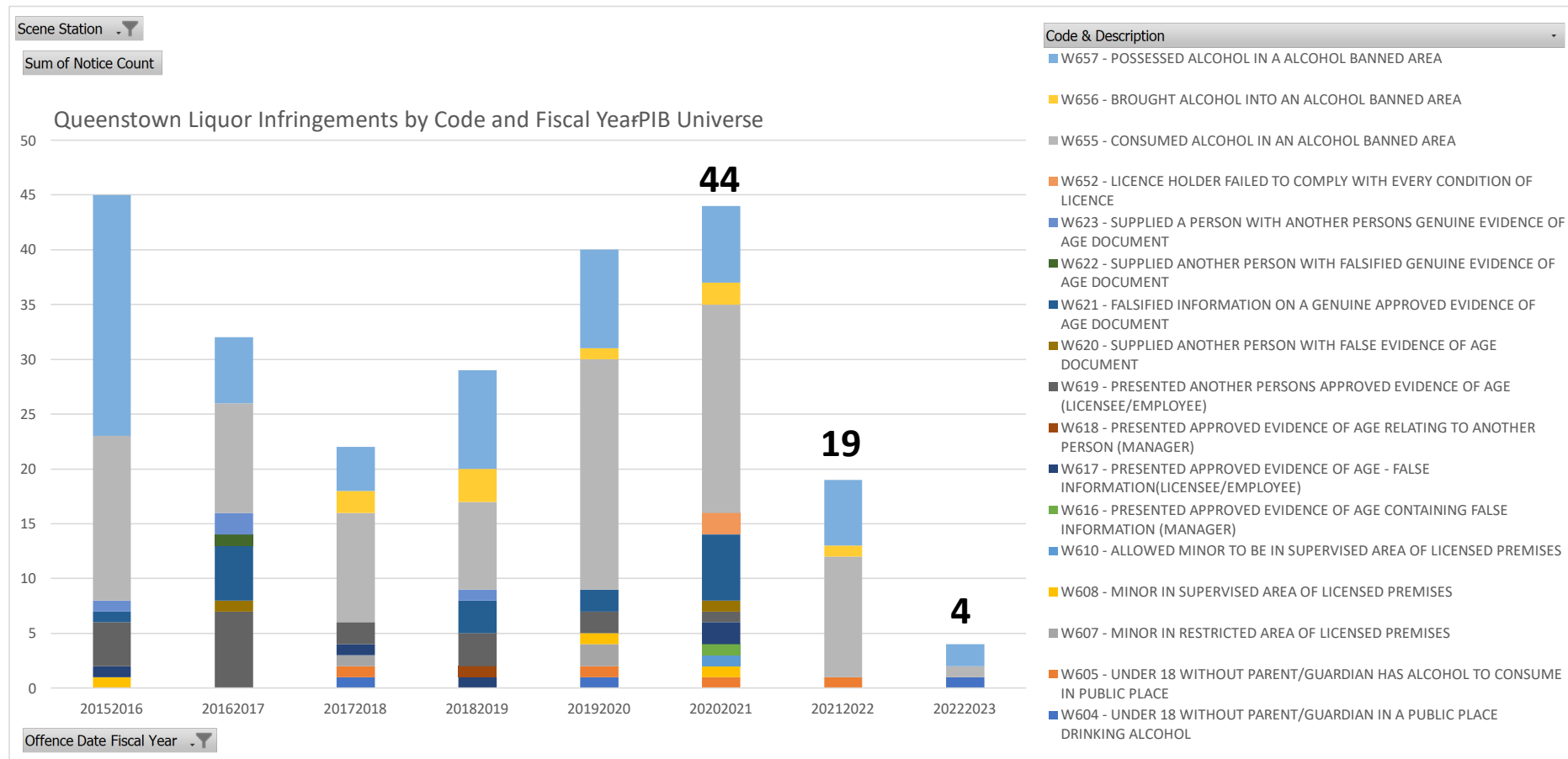
## Shift Times and Day of Week



Occurrence Start Day of Week

This measures all issued Liquor Infringements at Queenstown scene station by Fiscal Year. Warnings are not recorded.

# Liquor Infringements



17/02/2023

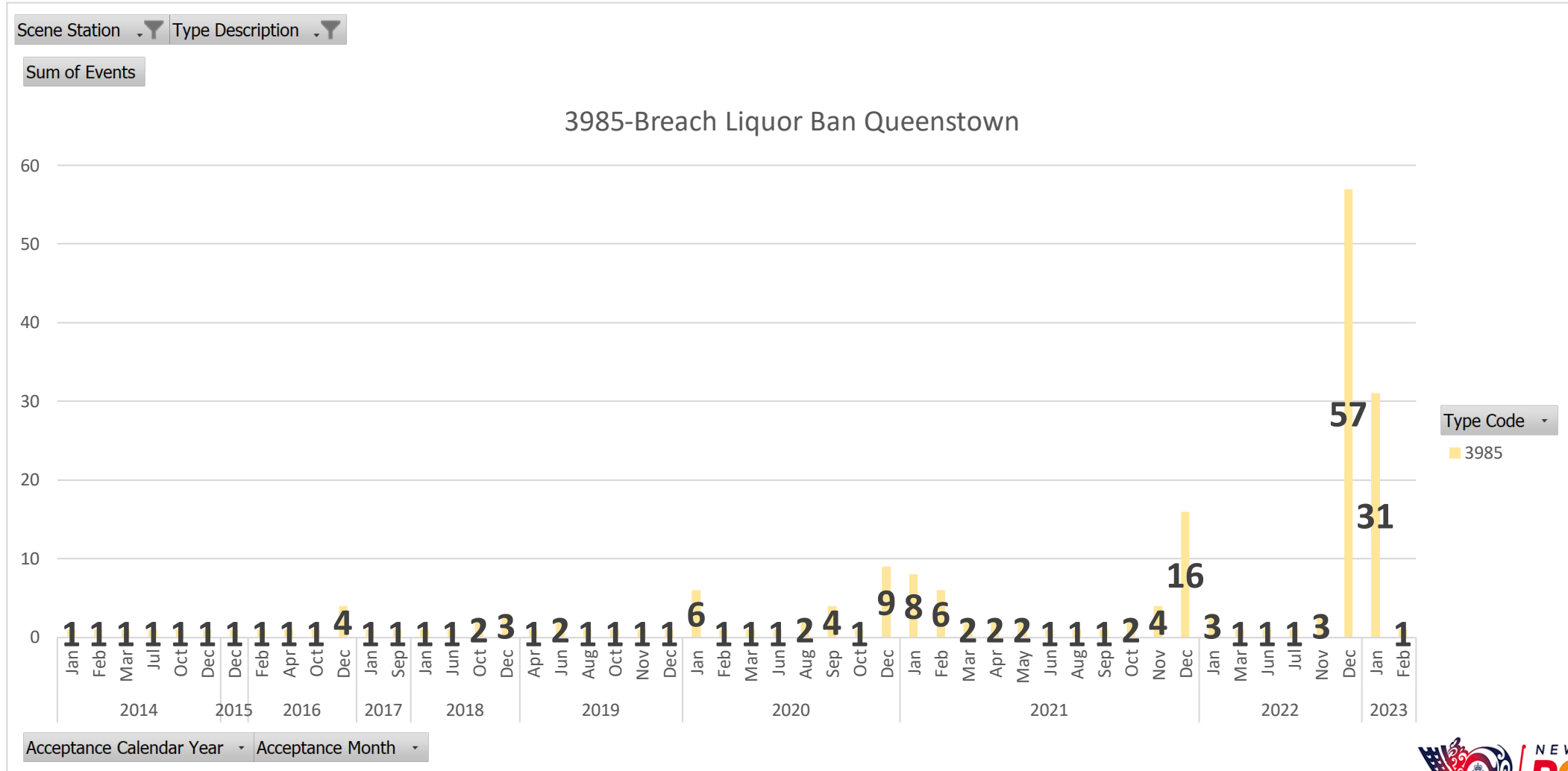
IN CONFIDENCE



SOUTHERN DISTRICT INTELLIGENCE



# Breach Liquor Ban



17/02/2023

IN CONFIDENCE

# Wānaka

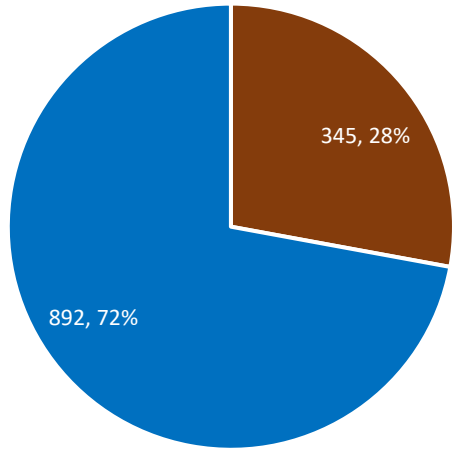
17/02/2023

IN CONFIDENCE

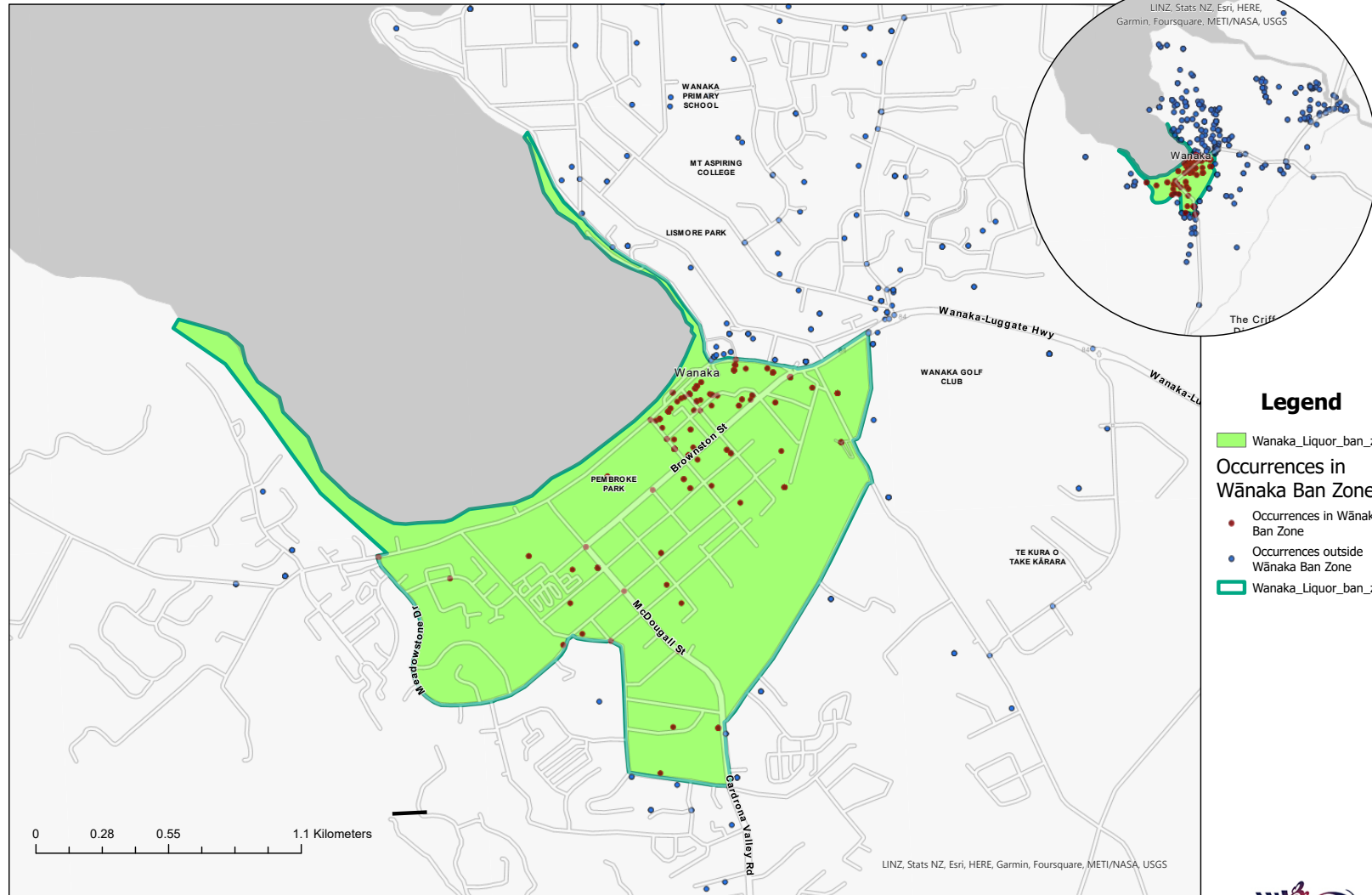
This measures all reported occurrences between 2020-2022, at Wānaka scene station, where alcohol was a contributing factor

# Ban area

Wānaka



■ Inside Ban Area ■ Outside Ban Area



17/02/2023

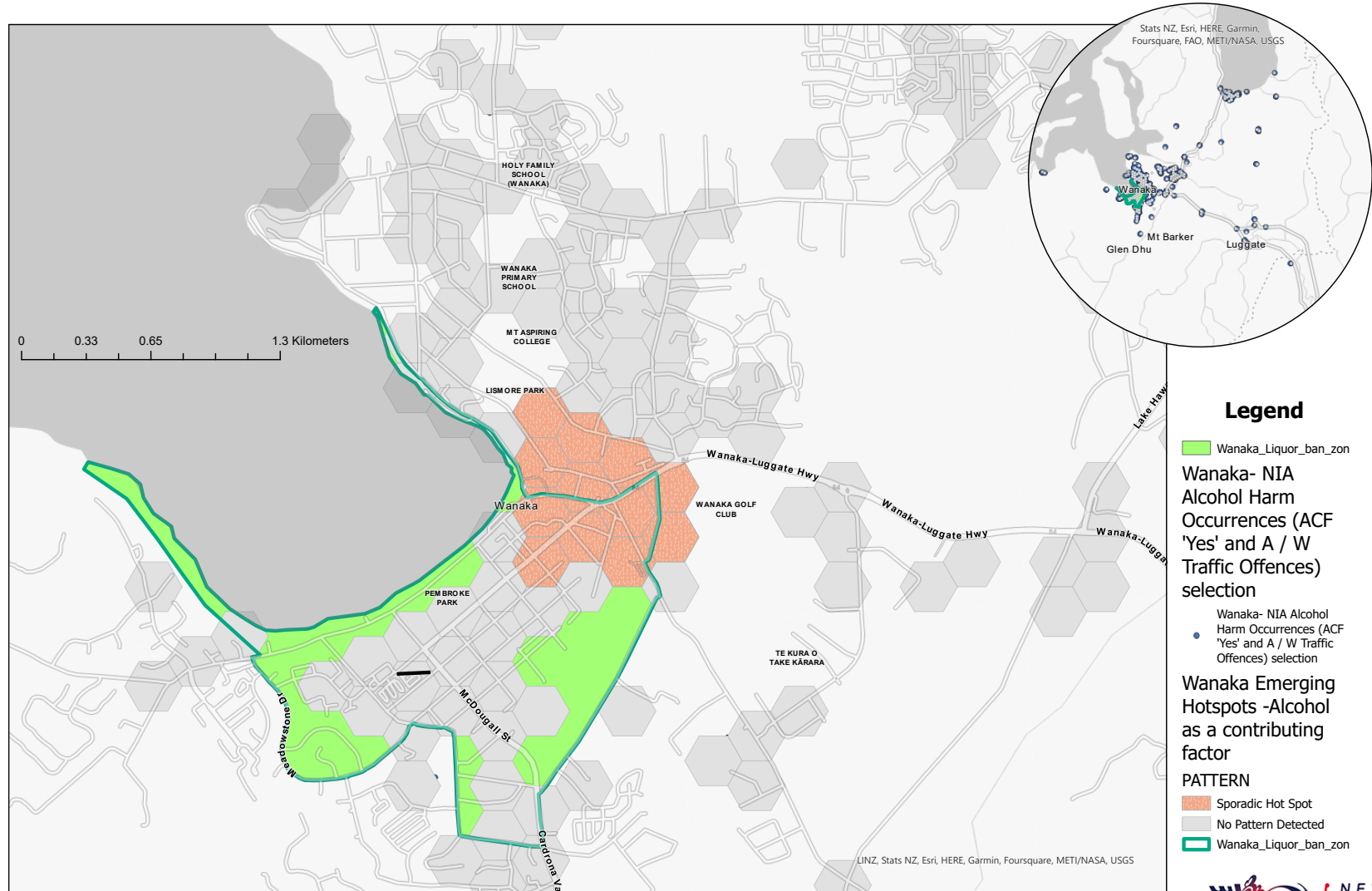
IN CONFIDENCE



SOUTHERN DISTRICT INTELLIGENCE

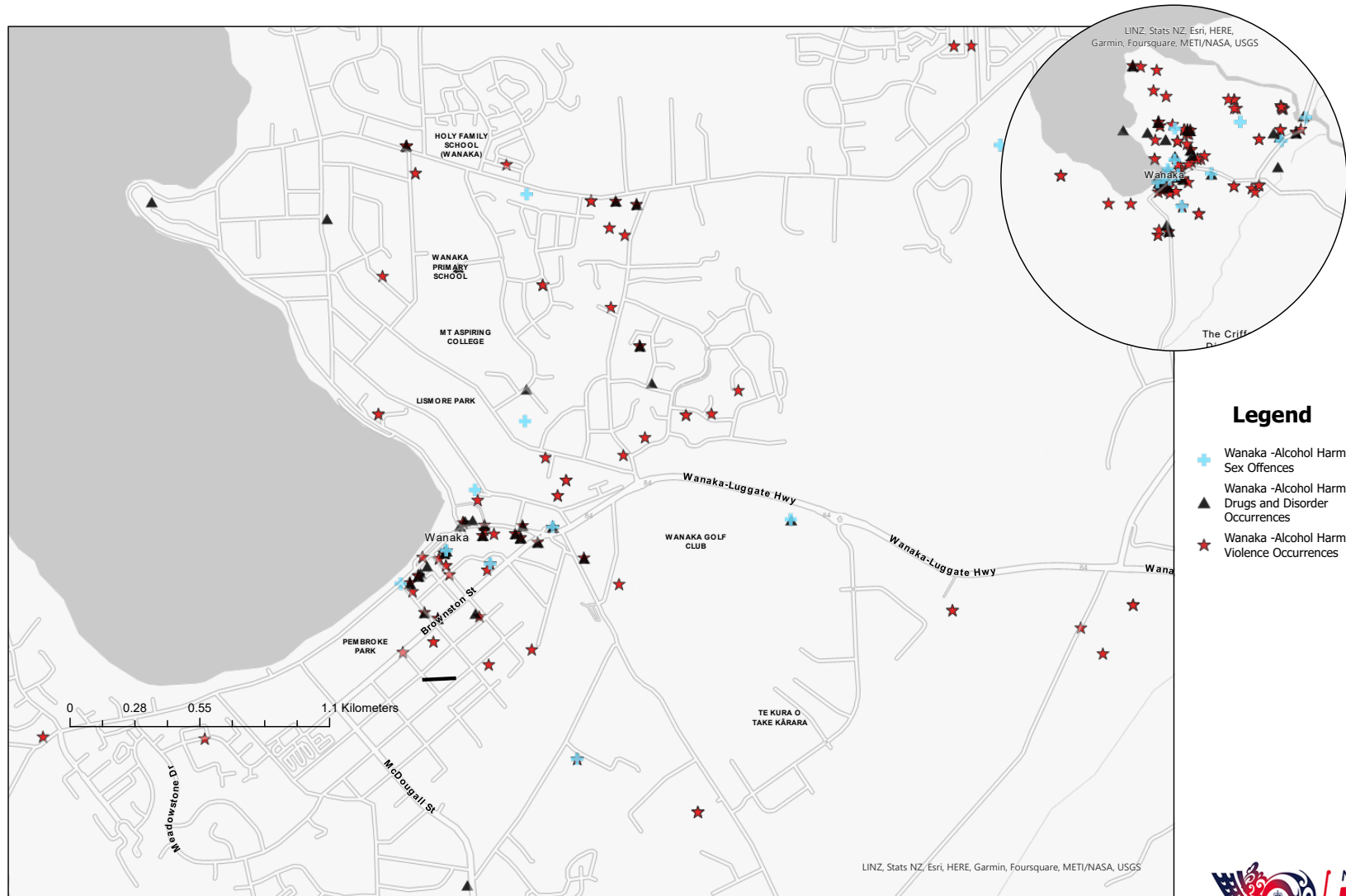
This measures all calls for service between 2020-2022, at Wānaka scene station, where alcohol was a contributing factor, which were not further reported (K1 or K3).

# Hot spots



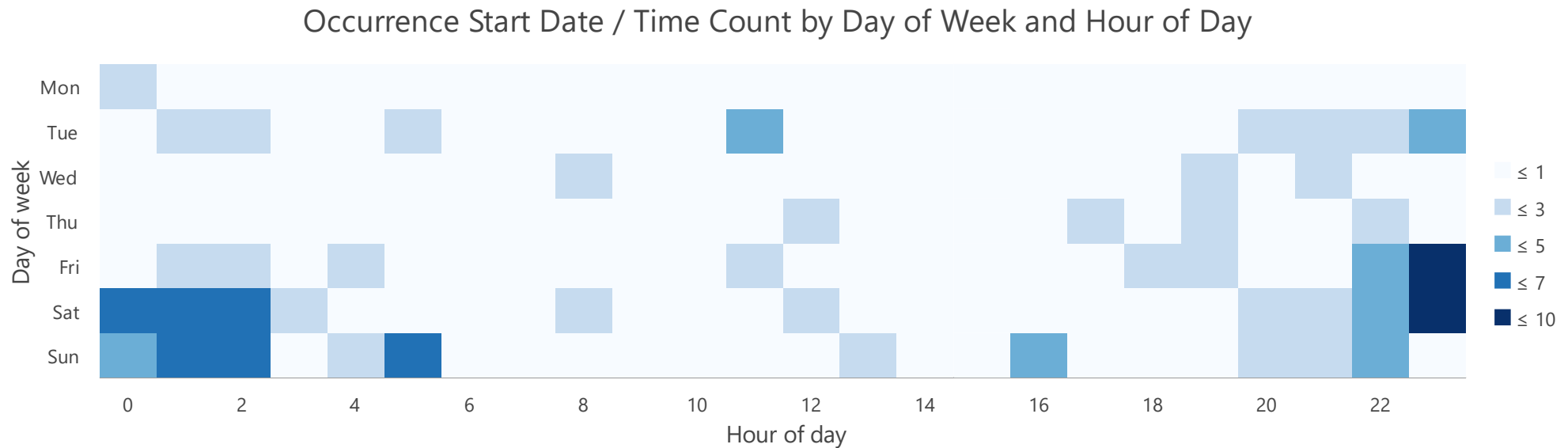
This measures Drugs and Disorder, Sexual Offences, and Violence reported occurrences between 2020-2022, at Wānaka scene station, where alcohol was a contributing factor

# Crime types



This measures Violence reported occurrences between 2020-2022, at Wānaka scene station, where alcohol was a contributing factor

# Day and hour



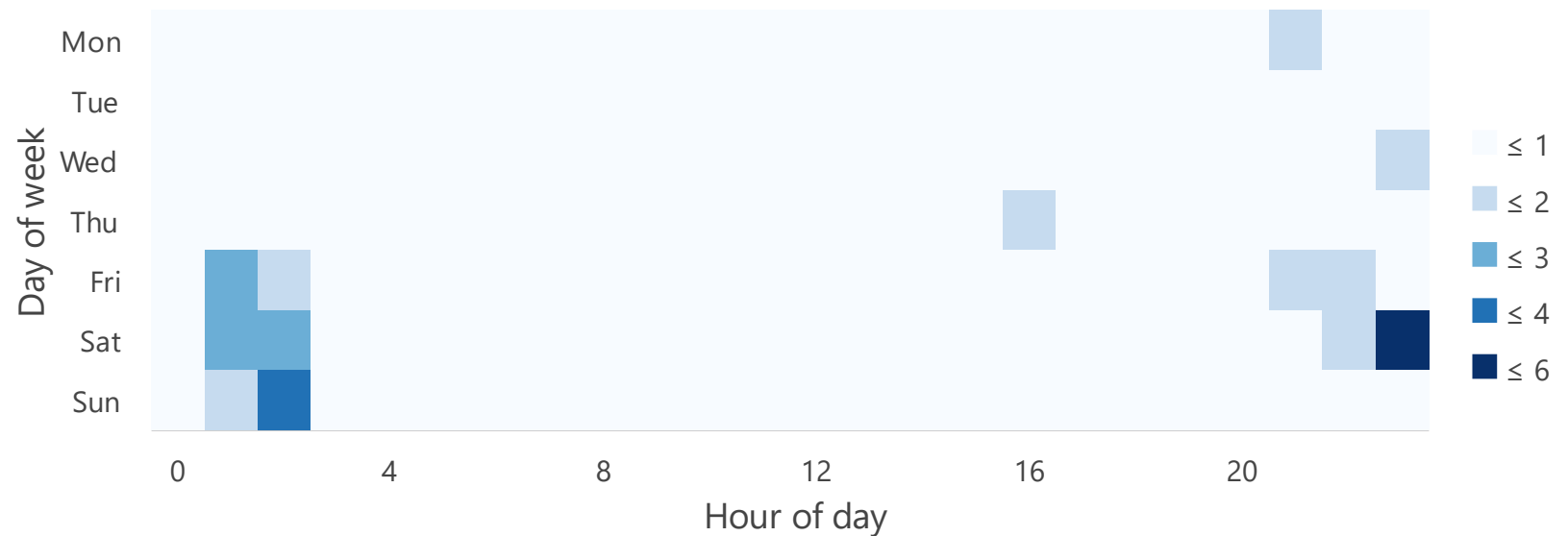
# Violence



This measures Drugs & Disorder reported occurrences between 2020-2022, at Wānaka scene station, where alcohol was a contributing factor

# Day and hour

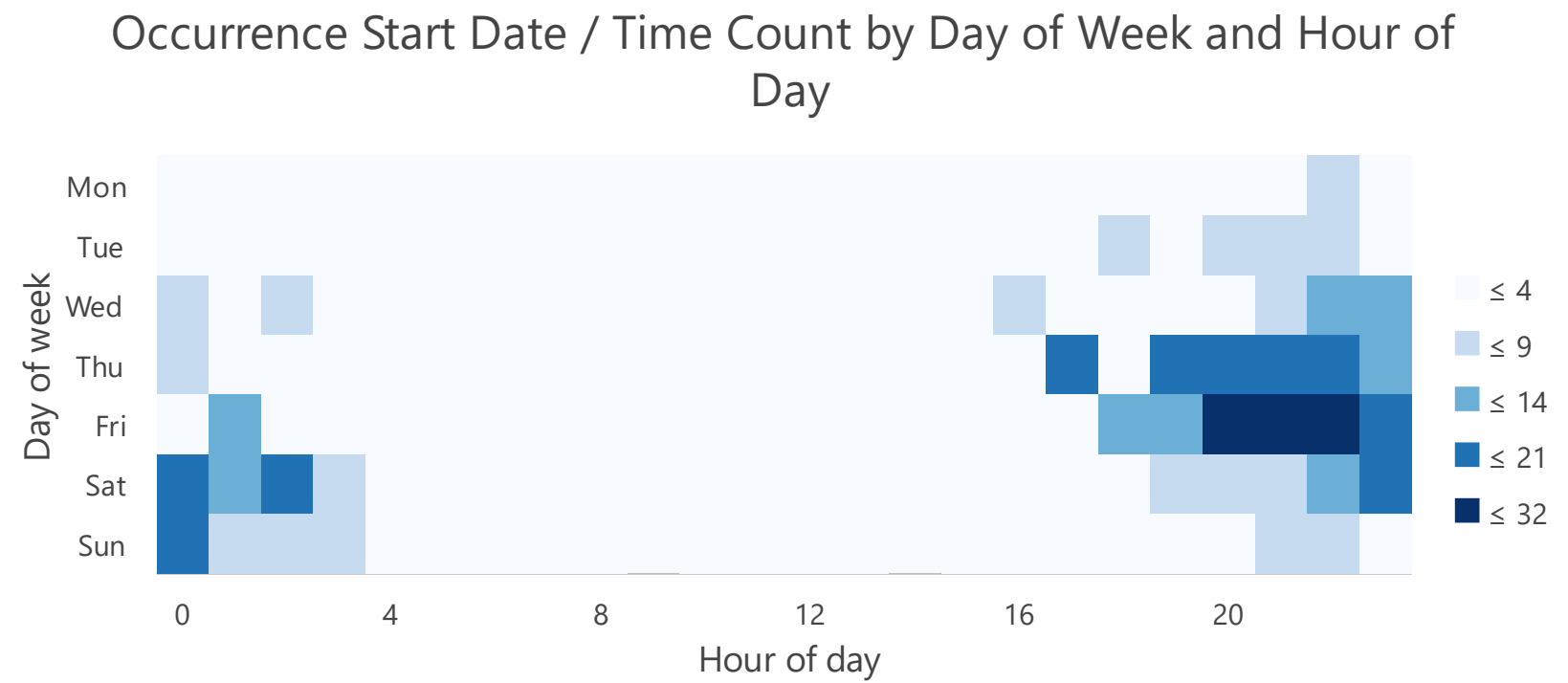
Occurrence Start Date / Time Count by Day of Week and Hour of Day



# Drugs & Disorder

This measures Traffic Offences between 2020-2022, at Wānaka scene station, where alcohol was a contributing factor

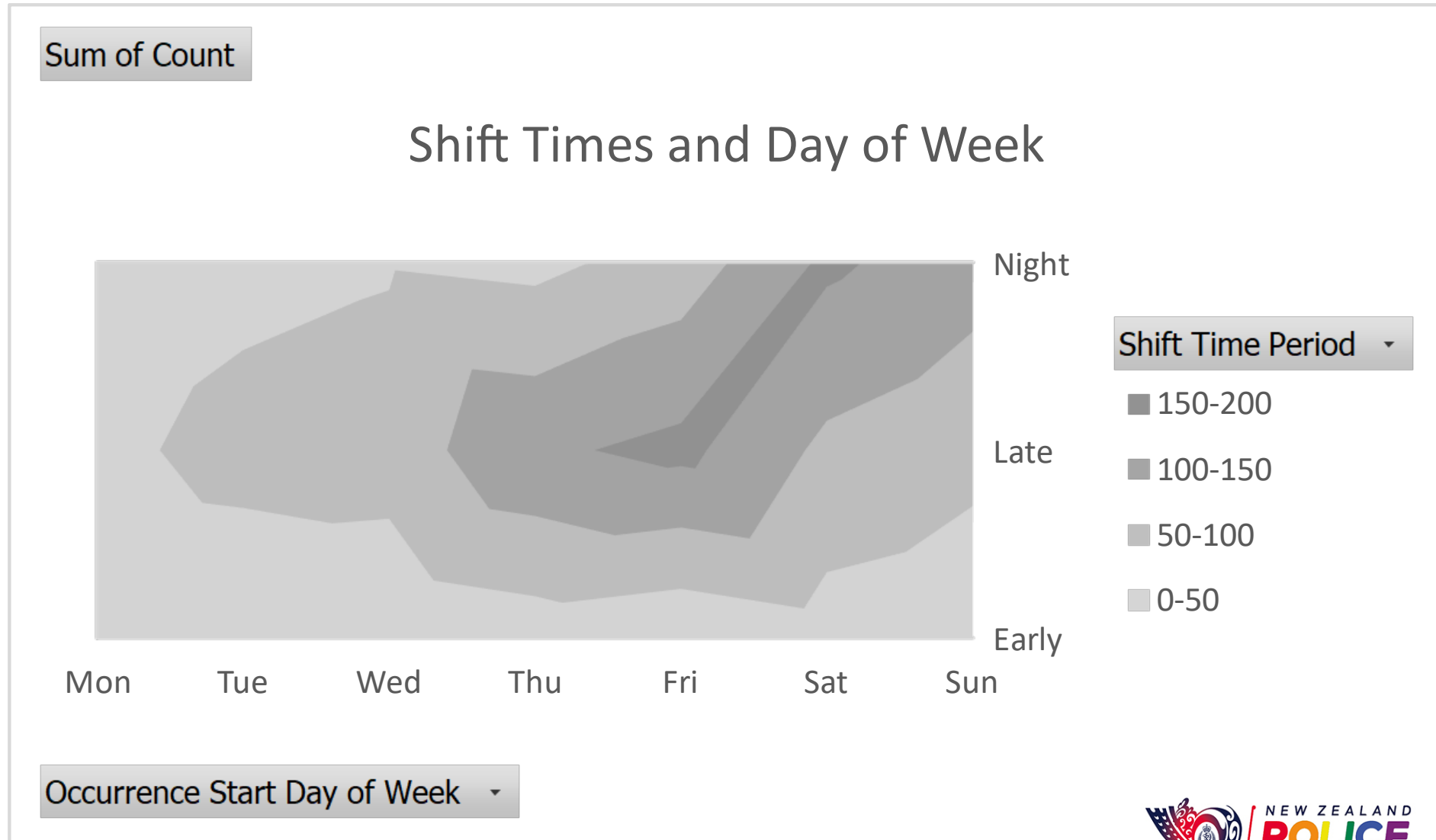
# Day and hour



# Traffic offences

This measures all reported occurrences between 2020-2022, at Wānaka scene station, where alcohol was a contributing factor

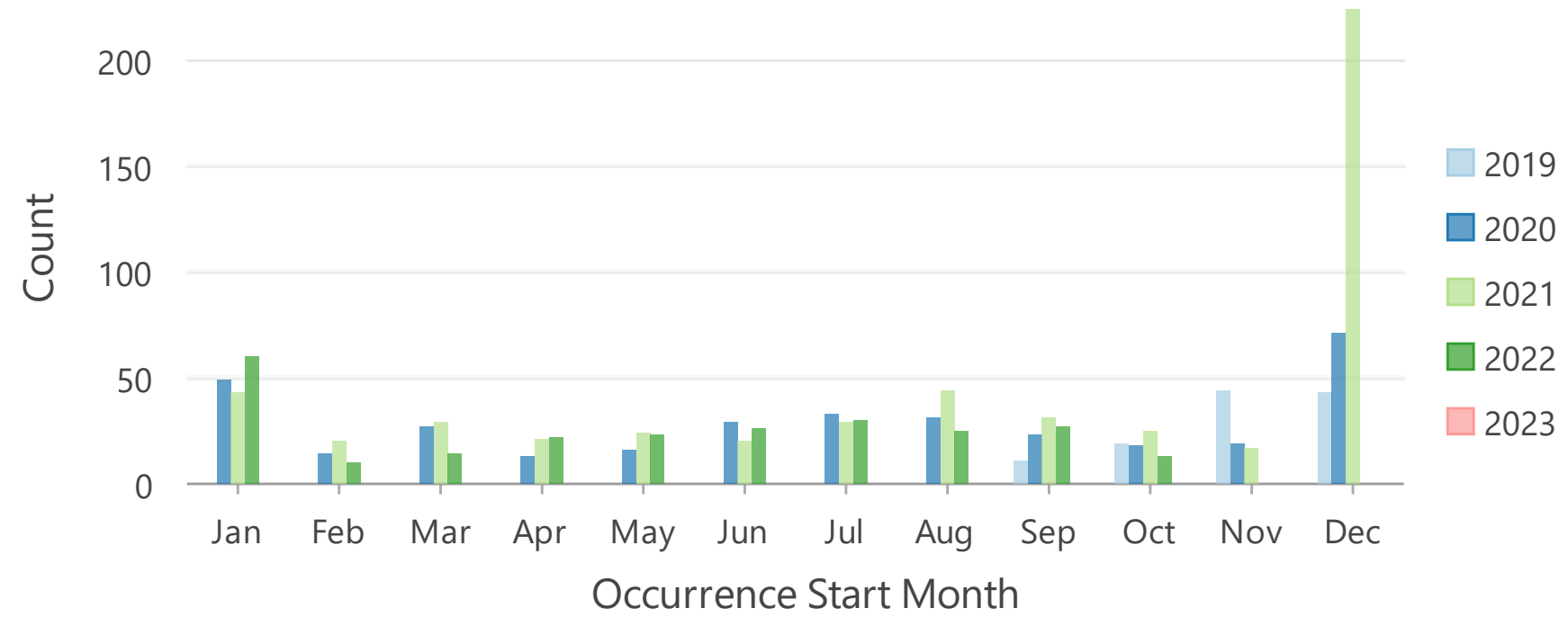
# Day and shift



This measures all reported occurrences between 2020-2022, at Wānaka scene station, where alcohol was a contributing factor

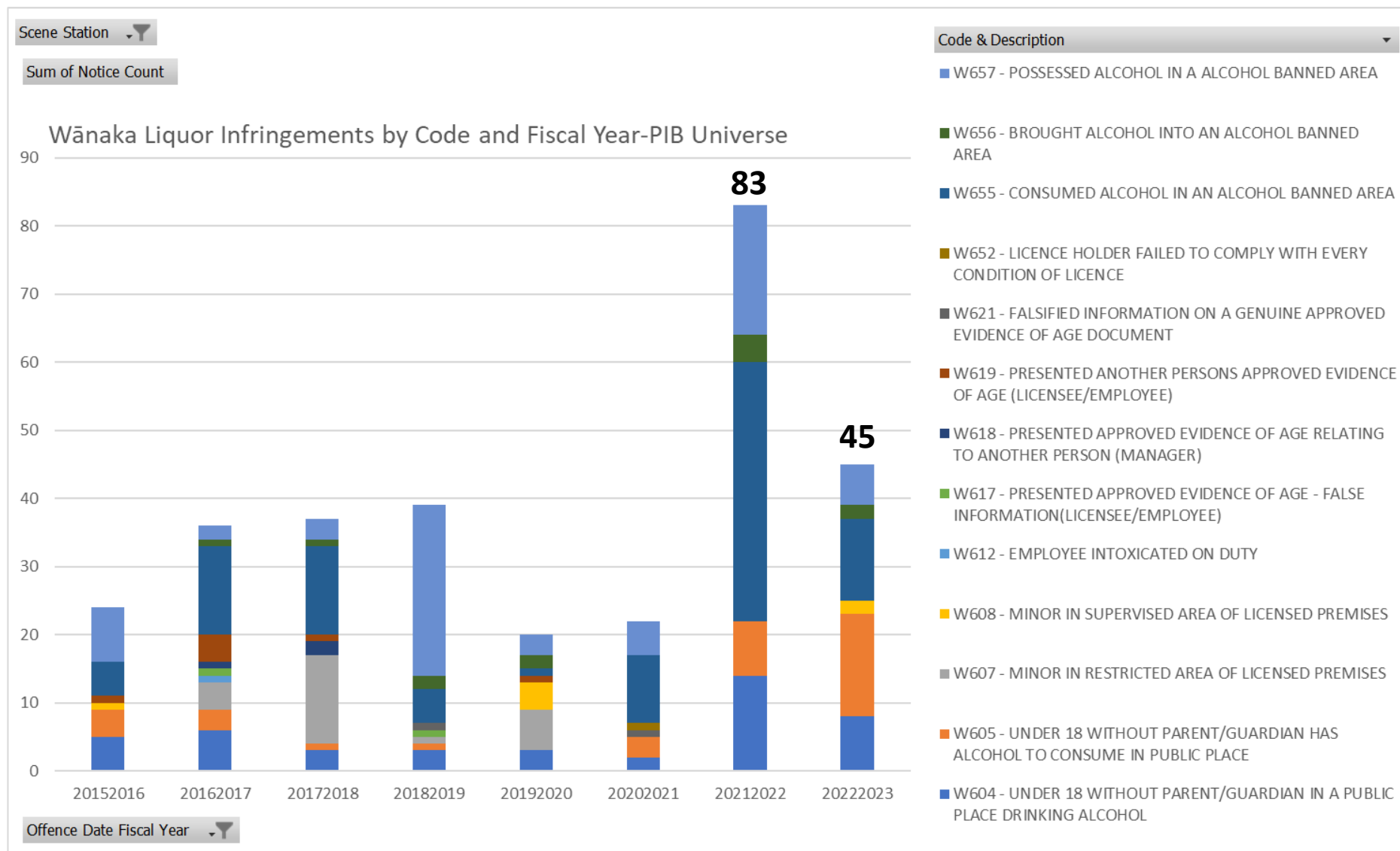
# Month and year

Comparison of data counts by Occurrence Start Month and Occurrence Start Calendar Year



This measures all issued Liquor Infringements at Wānaka scene station by Fiscal Year. Warnings are not recorded.

# Liquor Infringements



17/02/2023

IN CONFIDENCE



SOUTHERN DISTRICT INTELLIGENCE

# Breach Liquor Ban



17/02/2023

IN CONFIDENCE