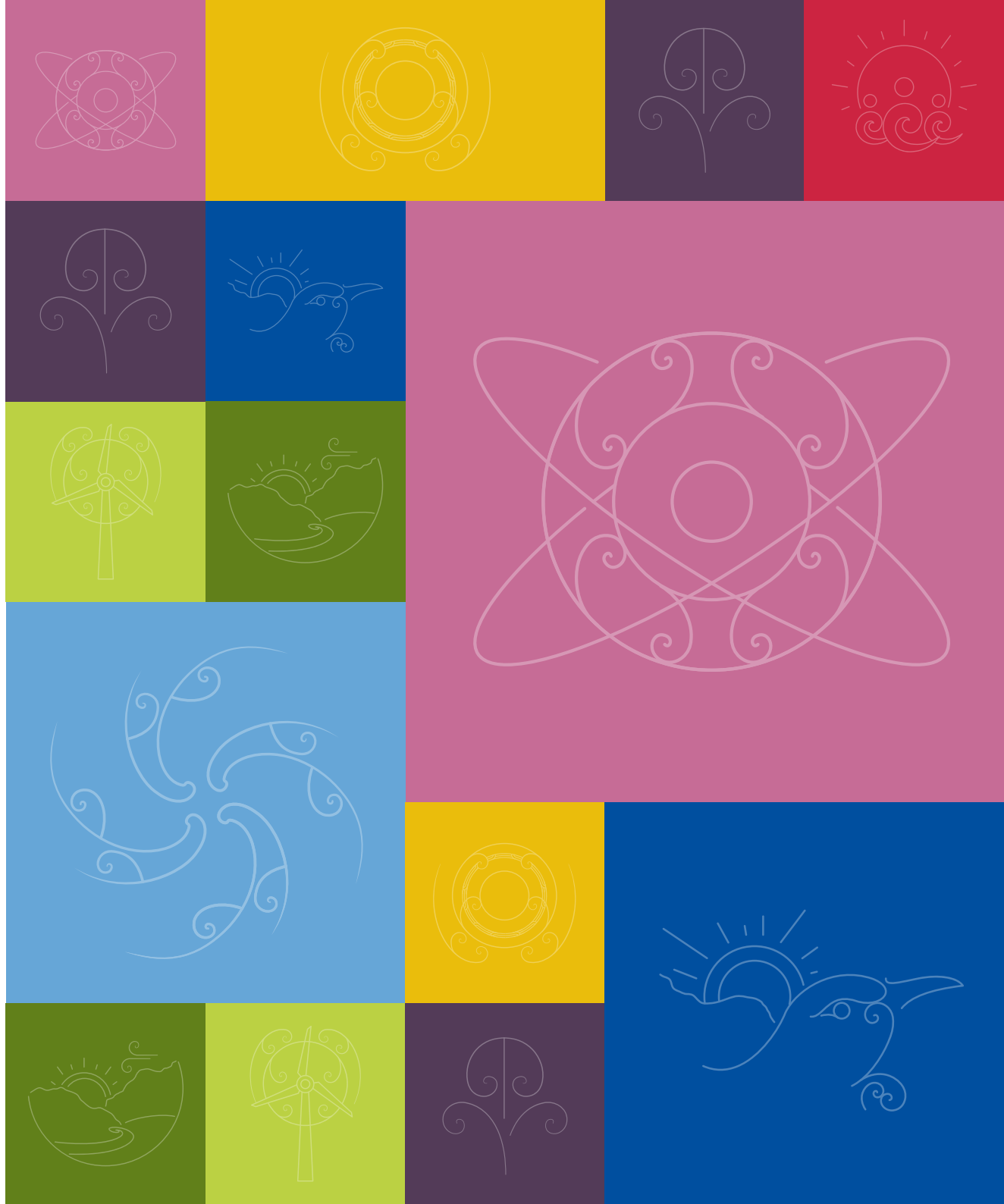


2024 2034

/ Long Term Plan /
/ Summary of decisions /



Introduction

During July 2024, the Council sought your feedback on the draft Long Term Plan 2024-2034 and specific consultation topics that were detailed in the consultation document.

We also signalled other notable projects and provided an update on what else had changed in the draft plan such as funding for stages two and three of the Queenstown Town Centre Arterial Road, reduced funding for active travel, the purchase and management of Wānaka's newest recreation reserve at Mt Iron, and much more. The consultation process invited formal submissions on these issues and any aspect of the draft LTP.

Over the month-long consultation period, the Mayor and Councillors attended 14 in-person community engagement events and widely promoted the opportunity for residents and ratepayers to participate.

Council received 939 formal submissions, 8 community associations were represented and 97 chose to speak at submission hearings on 26-27 August held in Queenstown and Wānaka. Public deliberations were held in Queenstown on 28 August¹.

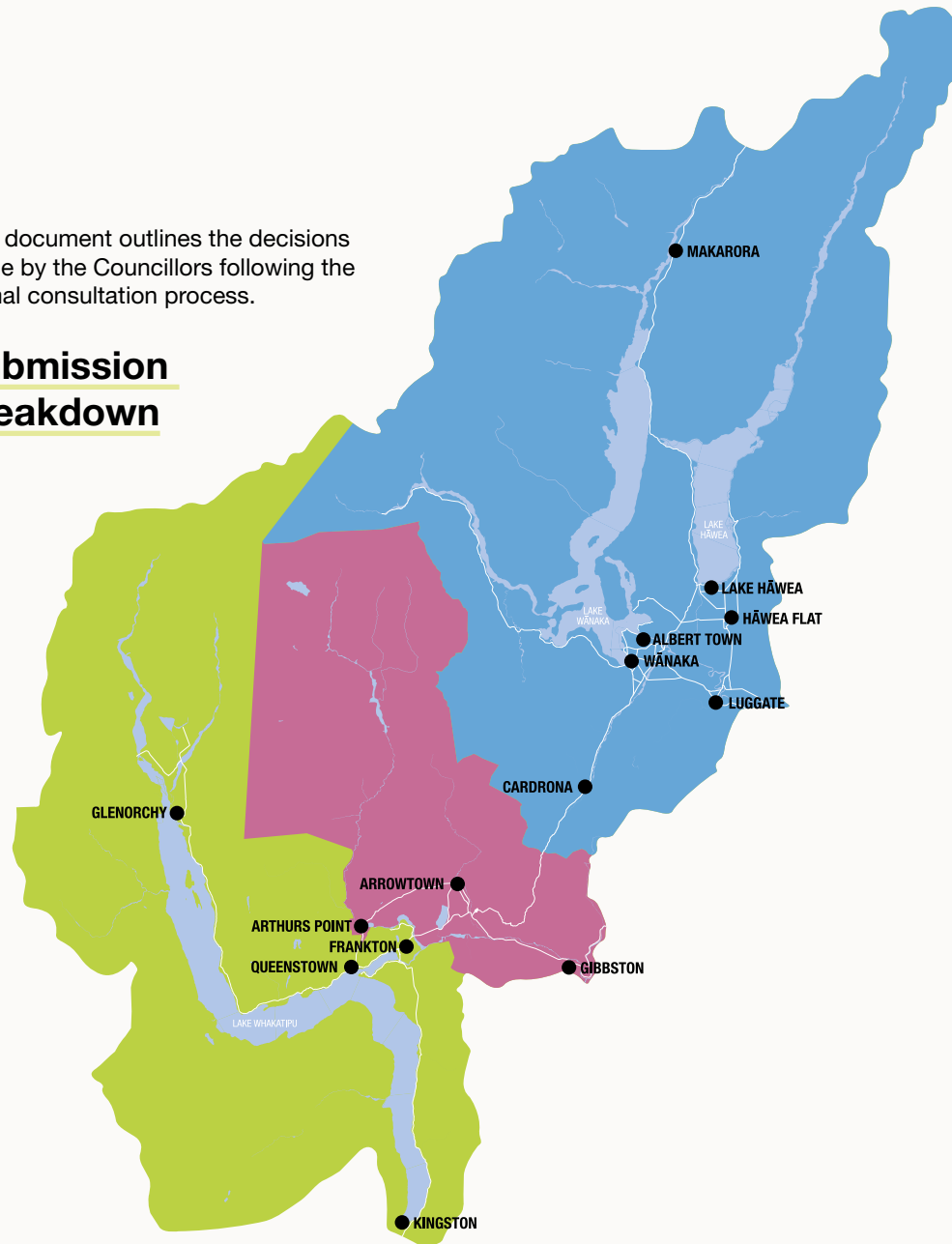
As well as feedback on the key consultation topics, other themes that emerged during the consultation process included requests for investment in Cardrona-based Snow Farm facilities and services, Upper Clutha sports facilities, Wānaka performing arts and cultural centre, climate and biodiversity, active travel, along with concerns about council spending and the impact of major infrastructure projects.

The enthusiasm from community and volunteer groups reflects the passion our people have for their local facilities, environment and a connected community, and this was seen in the submissions and requests for funding.

Unfortunately, it is never possible for Council to support all the funding requests from the community, particularly those with significant price tags and long-term operational requirements, in the current financial climate. These requests speak to a community need and we will continue to work alongside the many groups who have engaged with us through this process – the time and energy they continuously put into improving our district and quality of life is second to none and we will do what we can to continue to support their efforts.

This document outlines the decisions made by the Councillors following the formal consultation process.

Submission breakdown



62% (586)

WĀNAKA-UPPER CLUTHA WARD

20% (191)

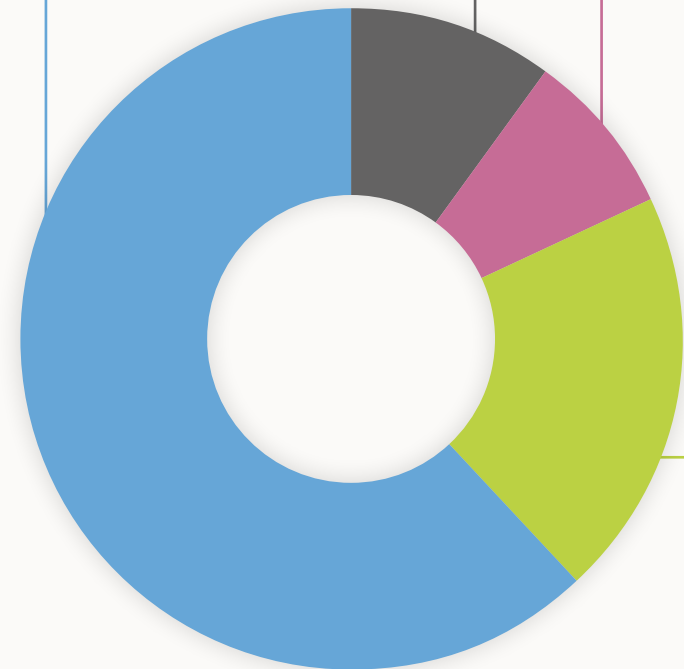
QUEENSTOWN-WHAKATIPU WARD

8% (75)

ARROWTOWN-KAWARAU WARD

10% (87)

LOCATION NOT SPECIFIED



Summary of decisions

Consultation topic 1a: Targeted rate on Queenstown Town Centre Properties (street upgrades from 2024-2025)

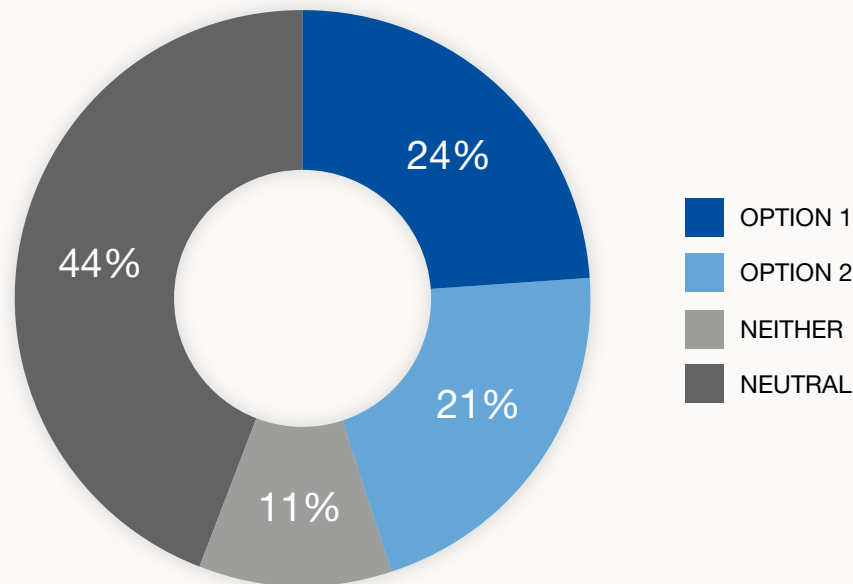
Options

The consultation document presented the following options to recover costs associated with delivering the Town Centre Street Upgrades project:

OPTION 1
Targeted rates recovery focused on wider Queenstown CBD ratepayers
OPTION 2
Apply costs to the existing Whakatipu Rooding Rates
PREFERRED OPTION
We proposed option 1 as the preferred option as it fairly apportions the costs to ratepayers who benefit most from the upgrades.

Outcome

There were 630 responses to this subject. Of these 24% were in favour of option 1 (targeted rates for Queenstown town centre properties), 21% for option 2 (apply costs to the existing Whakatipu roading rates), while 11% responded neither and 44% neutral. Breaking this down further for responses from residents of the Whakatipu area only (222 responses), 33% were in favour of option 1, 40% option 2, 12% neither and 15% neutral.



The Councillors determined that the preferred option be included in the LTP as outlined in the consultation document.

Consultation topic 1b: Targeted rate on Queenstown Town Centre Properties (Town Centre Arterials from 2025-2026)

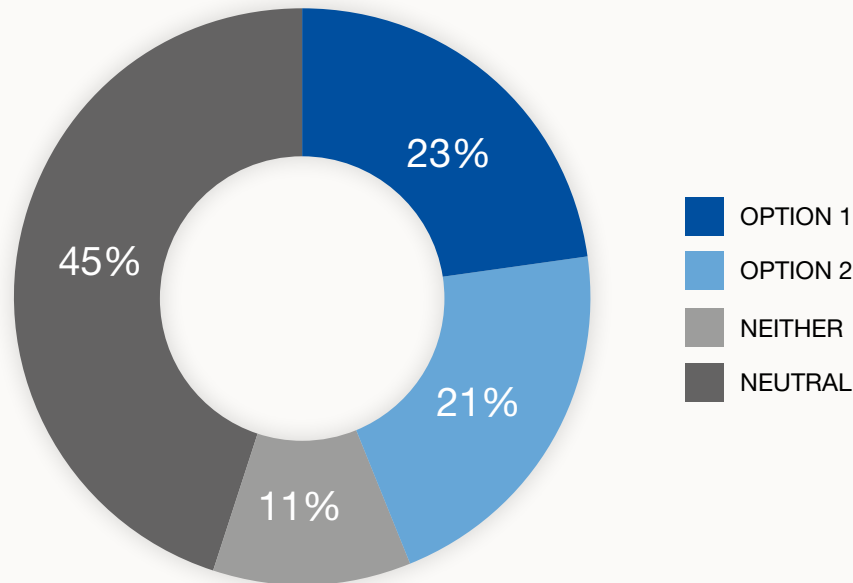
Options

The consultation document presented the following options to recover costs associated with delivering the Town Centre Arterial (stage 1) project:

OPTION 1
Targeted rates recovery focused on wider Queenstown CBD ratepayers
OPTION 2
Apply costs to the existing Whakatipu Roding Rates
PREFERRED OPTION
We proposed option 1 as the preferred option as it fairly apportions the costs to ratepayers who benefit most from the upgrades.

Outcome

Responses to topic 1B largely followed topic 1A. There were 603 responses to this question, with 23% in favour of option 1, 21% option 2, 11% responded neither and 45% neutral. Breaking this down again by Whakatipu residents, there were 219 responses, with 31% in favour of option 1, 41% option 2, 14% neither and 14% neutral.



Councillors determined that option 2, to apply costs to the existing Whakatipu roding rates, be included in the LTP. This recommendation was made on the basis that improved access to the Queenstown Town Centre benefited the wider ward and costs should be apportioned more broadly.

Consultation topic 2: Bringing forward investment in community and sporting facilities

The consultation document presented an option to bring forward investment in community facilities at 516 Ladies Mile, investment in new sports fields in Wānaka, and clean energy upgrades at our Aquatic facilities in Queenstown, Wānaka and Arrowtown.

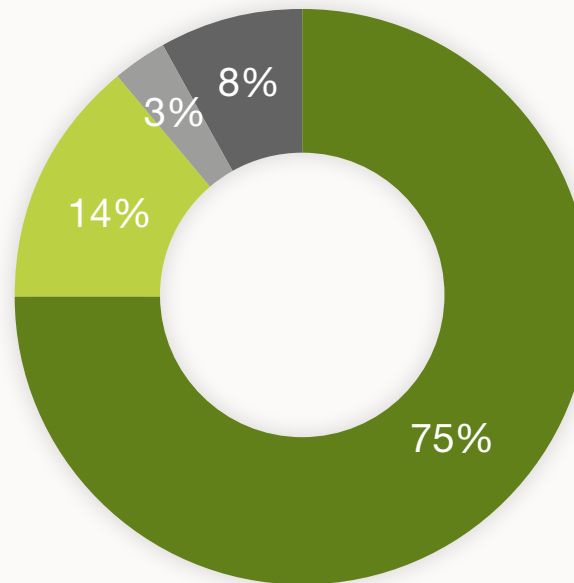
Options

The consultation document presented the following options to recover costs associated with delivering the Town Centre Arterial (stage 1) project:

OPTION 1
Bring forward funding to invest in community and sports facilities in Queenstown and Wānaka.
OPTION 2
Don't bring forward funding and deliver the facilities and upgrades at a later date.
PREFERRED OPTION
We presented option 1 as the preferred option as it recognised the community need for new facilities and provided an opportunity to deliver the upgrades earlier in the ten year programme. It also provided an opportunity to further demonstrate ambitious climate leadership and take bold steps to reduce the organisation's emissions.

Outcome

There were 761 responses to this question. Option 1 (bring forward funding to invest in community and sports facilities in Queenstown and Wānaka) was preferred by 75% of submitters, with option 2 (don't bring forward funding and deliver the facilities and upgrades at a later date) preferred by 14%. 3% responded neither and 8% neutral.



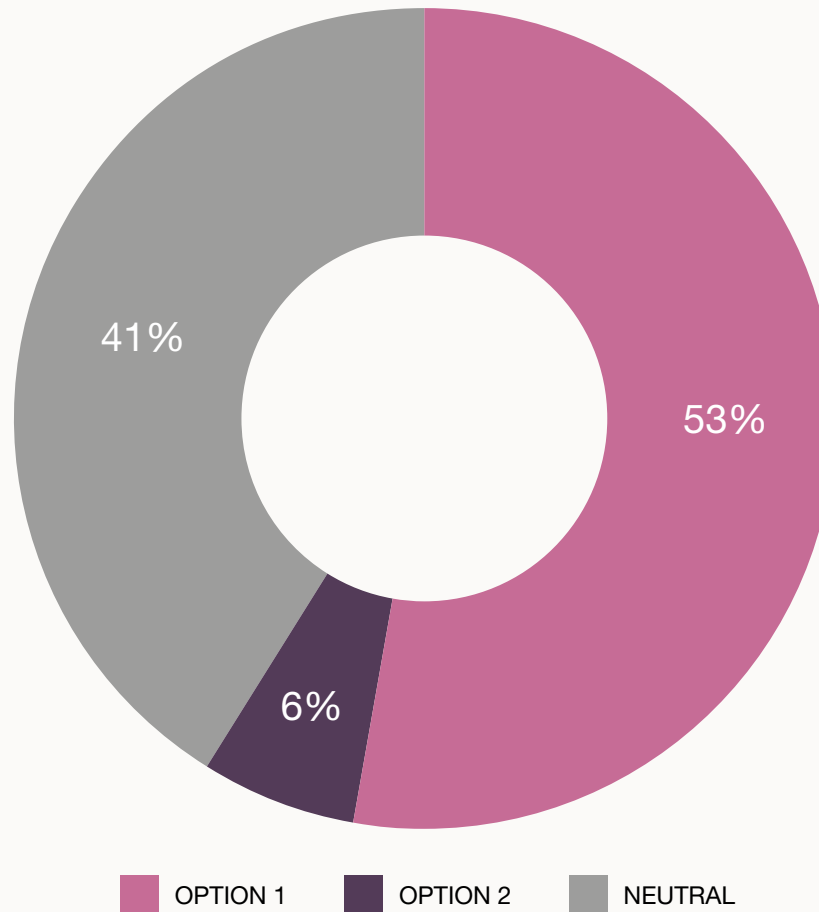
The Councillors determined that the preferred option be included in the LTP as outlined in the consultation document.

OPTION 1 OPTION 2 NEITHER NEUTRAL

Alternative funding options

While not a key consultation topic, the community was also asked for input on whether it supported Council's intent to pursue alternative funding options, such as an upfront development contribution.

There were 613 responses to the question on alternative funding options. 53% were in support, 6% opposed, and 41% neutral.



Submissions were noted by Councillors as work continues to pursue opportunities to reduce the financial burden on ratepayers. This includes further investigation of the government's recently announced regional deals package.

Issues and opportunities raised by the community

During the consultation process you took the opportunity to highlight a number of issues that are important to you as a community. We have responded to some of the more commonly raised issues here.

We are proud to have such a passionate community who have strongly advocated for improved community and public facilities, particularly for the Wānaka-Upper Clutha ward.

Working within limited budgets

There has been a lot of communication and media commentary on the current challenges facing the local government sector and limited budget available in the first three years of the ten year programme. Unfortunately, the current financial climate and uncertainty means that Council simply cannot afford to provide significant financial assistance for some of these projects or facilities in the immediate future. It remains committed to working closely with community groups to identify potential opportunities

Wānaka Performing Arts and Cultural Centre

The proposed Wānaka Performing Arts and Cultural Centre has the potential to offer cultural, social, and economic benefits to the Upper Clutha, wider Queenstown Lakes, and regional communities. However, as QLDC is currently working within significant financial constraints and community growth pressures, an investment into social infrastructure of this scale was not considered for Long Term Plan 2024-2034.

Council officers will continue working with the Wānaka Arts and Culture Charitable Trust to review possible land, operational considerations, and other opportunities for the future, with a view towards investment in future Long-Term Plans.

Public toilets at Snow Farm, Cardrona

Council officers are working closely with Snow Farm representatives to consider options for public toilet facilities in the future.

Sports fields in Wānaka

As well as the investment brought forward for sports and community facilities in this LTP, Council is working closely with local sports groups and doing further work to develop and understand the cost of short, medium and long term options for future sports fields in Wānaka. As part of this, Council will be considering opportunities for the retiming of projects such as the 101 Ballantyne Road remediation. Further information will be brought back to Council for consideration as soon as costings and implications are available.

Carparking in central Queenstown

Parking in central Queenstown was a key theme during consultation and was considered during deliberations. This will be looked at further by Council, including potential opportunities to advance the Stanley Street carpark. Further information will be published before the end of 2024.

Active travel route between Jack's Point and Frankton

The A7 active travel route proposed to connect Frankton and Jack's Point is the responsibility of NZ Transport Agency Waka Kotahi. The National Land Transport Programme (NLTP) 2024-27 is targeting investment at completing committed projects already underway and prioritising the maintenance and renewal of existing cycleways and footpaths.

There is a significant carry-forward of projects from the previous 2021-24 NLTP, meaning there is no available funding for new projects, or funding to top up existing ones. Therefore, it is unlikely the A7 route is able to proceed to construction in this NLTP period.

Significance and Engagement Policy

Clarifications were made to the way strategic assets are recorded in the policy and to specify the level of Council-owned equity shares in Queenstown Airport Corporation. Specifically, the 75.01% shareholding in Queenstown Airport is identified as a strategic asset. The proposed group of assets for non-reserve land holdings has been removed following deliberations with these matters being managed via the Council's Property Sale and Acquisition Policy².

The final Significance and Engagement Policy can be found online at www.qldc.govt.nz/policies

Development Contributions Policy

The Development Contribution Policy 2024 was consulted on as part of the wider Long Term Plan process, updating on the Development Contribution Policy 2021-2022. The key change was to update contribution levels as a result of the incorporation of the latest actual expenditure and the revised capital programme proposed by the Long Term Plan 2024-2034.

The final Development Contributions Policy 2024 can be found online at www.qldc.govt.nz/policies

District-wide capital investment

After the change in Government and confirmation of a change in direction for water reform, we revised our capital programme to include three waters investment for the full ten years of the LTP. To accommodate the three waters expenditure non-three waters strategic priority projects have had to be deferred both within and outside of the ten years of the LTP. There's still plenty planned for our communities right across the district. Some highlights include Glenorchy Playground (\$367k year 3), Hāwea Playground (\$799k year 3), Makarora community building renewals (\$40k), Kingston Community Building and St John (\$65k), Cardrona Hall and Church (\$96k).

We've provided an online dashboard mapping where capital investment is proposed across the district. Wherever you live in the district, you can filter to see what's planned for your area.

Take a look at the dashboard online at www.qldc.govt.nz/ltp

Thank you

Thank you to everyone who took the time to provide a submission through this consultation process or spoke at one of the hearings.

For more information, please visit www.qldc.govt.nz/ltp or contact your local Councillor www.qldc.govt.nz/your-council/elected-members

