

Indicative Precedent Images



Laneways - incorporating spill out seating areas for outdoor dining



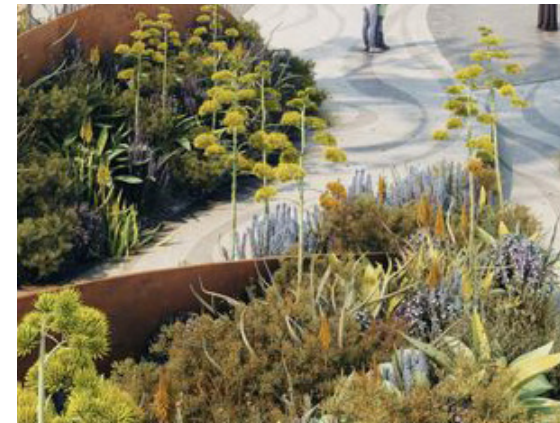
Laneways - Vertical vegetated rain chain wall, celebrating rain water through visual means



Rokoā - Healing Gardens, with seating creating privacy and peacefulness



Site-wide - Planting integrated with paving for a biophilic, soft green feel



Rokoā - Healing Gardens, with intricate meandering pathways



Rokoā - Healing Gardens - Tranquil spaces for reflection and story telling



Hardscape Strategy


Cultural Values Strategy





The design seeks to recognise cultural values, needs and practice, through spatial design.


The strategy focuses the cultural narrative within distinctive areas within the landscape. Materials, furniture, motifs, signage and interpretation will be used to represent and facilitate this narrative.


Legend

-  Te Ngākau – Heart centre
The central space that welcomes and connects people into the site

-  Tomokaka – Entry Thresholds
Providing access to water features to whakanoa (spiritual cleansing) and entry gateways

-  Tākaro – Interactive space
Using educational/historic elements to teach stories. Understanding the significance of the whakapapa of the Wānaka creation stories, to learn from them, and the values that they hold.

-  Rokoā – Healing Gardens
Using plants for cultural practice

-  Manaaki – Community Space
Places for community, interactive, hospitality, market access, accessibility, social spaces, pop up retail spaces

Hardscape Strategy

Indicative Surfacing Strategy



The hardscape strategy and material palette seek to emanate that of the braided 'river bed' concept, and to respond to cultural values. Storytelling should be incorporated, and materials are to include Ngāi Tahu visual culture, narrative and artistry.

The surfacing design presents combinations of neutral and warm toned pavers, gravels and schist rock (locally sourced) and plays with finishes of textured and smooth paving to create interest within the ground plane, whilst also considering accessibility.

The building forms sit like 'islands' integrated within the 'river bed' of the surrounding landscape.

Legend

P1a	Natural Stone Schist Paving - Smooth
P1b	Natural Stone Schist Paving - Textured
P2	Linear Feature Paving
P3	Paving Setts to building trim
P4	Permeable Resin Bonded Gravel
P5	Permeable Gravel to tree surrounds and 'gravel islands'
P6	Permeable Artificial Amenity Lawn
P7	Tiered Concrete Steps
P8	Concrete 'Floating' Deck
P9	Timber 'Floating' Deck
P10	Basic Concrete
	Boardwalk

Hardscape Strategy Plan

Hardscape Strategy



Colour palette

Indicative Material Palette



P6 Artificial amenity lawn



P1 a Natural blue stone schist paving, used as both smooth textures and textured/honed



P4 Permeable Resin Bonded Gravel



P2 linear feature paving integrated with planted/gravel edge



P7 Tiered Concrete Steps with integrated seating



P1 Natural blue stone schist paving



P5 Permeable Gravel to tree surrounds and 'gravel islands'



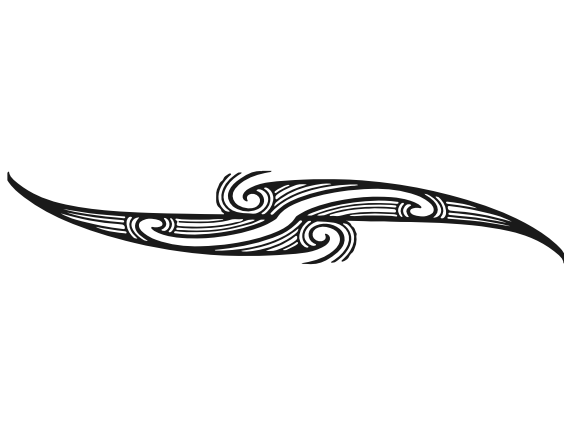
Boardwalk



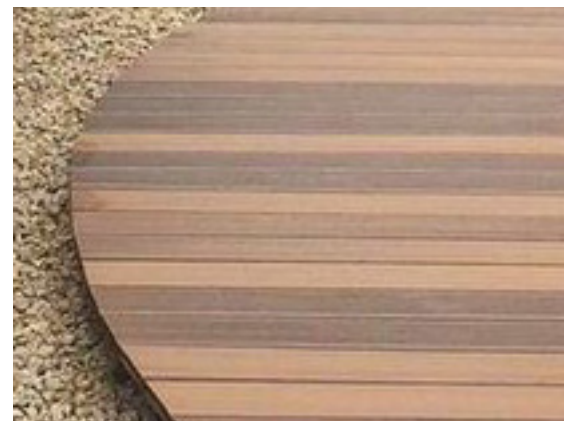
P3 Paving Setts to building trim, integrated into P2 linear feature paving



Decorative motifs integrated into paving



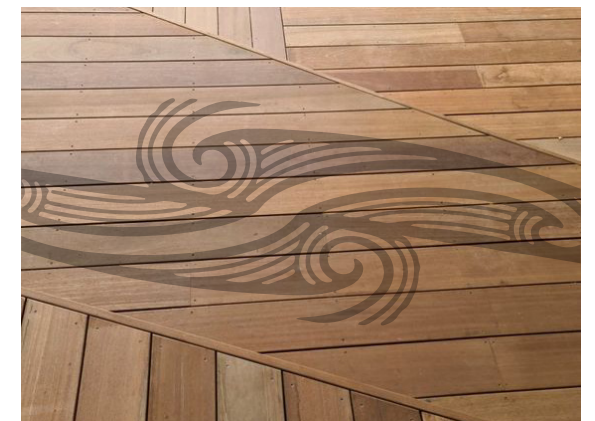
P3 Textured paving setts to building trim



P9 Timber Floating Deck



P2 Linear Feature Paving



Decorative patterns/motifs to be integrated into timber through slat design/carving/cut-outs etc



Example of a cultural motif referencing water, that can be integrated into surfaces and structures

Hardscape Strategy

Indicative Furniture/Structures Strategy



Hardscape Strategy Plan

The design incorporates various structural components. These built forms act as opportunities to express mana whenua stories and values. The structural elements also bring a flexibility and playfulness to the user experience and, larger built forms, help to create balance between the scale of the landscape with that of the surrounding buildings.

Traditional forms of travel like mokihi (canoes) and traditional forms of architecture utilised on the rivers and within nohoaka (seasonal occupation sites), should be considered for educational structural pieces. These could include lightweight and temporal forms, built for purpose, useful and locally resourced examples such as; whata (raised platform), tirewa (traditional drying structure), rakau kōrero (cultural markers), wharerau (traditional house).

Ngāi Tahu artists working within the visual language and with the cultural history of Te Waipounamu are best placed to respond to the landscape and projects that interact with place. Senior Ngāi Tahu artists carry the skill and experience to respond to the brief and can work to integrate elements of sound, movement, wind, shadow and light. Most importantly, their work can tell the authentic stories of mana whenua.

Legend	
	S1 Signage and Interpretation
	S2 Touchstone Boulder
	S3 Large Sculpture - Interactive
	S4 Large Sculpture - Centre Piece
	S5 Reflection Pool
	S6 Tomokaka - Entry Thresholds
	S7 Pergola
	S8 Integrated Seating
	S9 Raised garden bed - edge
	S10 Boardwalk
	S11 Stone Boulders - Tiered informal seating
	S12 Vertical Vegetated Rain Chains
	S13 Tiered Water Feature

Hardscape Strategy

Sculpture



S4 Large Scale Sculpture (eg. Ross Hemera) at Heart centre - Opportunity to incorporate wind/sound elements



S3 Large Scale Sculpture - Interactive (eg. Giant Mokihi (canoe) educational sculpture)

Water



S12 Vegetated Vertical Rain Chains - Celebrating water through visual and audible means using biophilic design



S13 Indicative Tiered Water Feature - Representation of the flowing Ōrau river, bringing elements of touch + sound

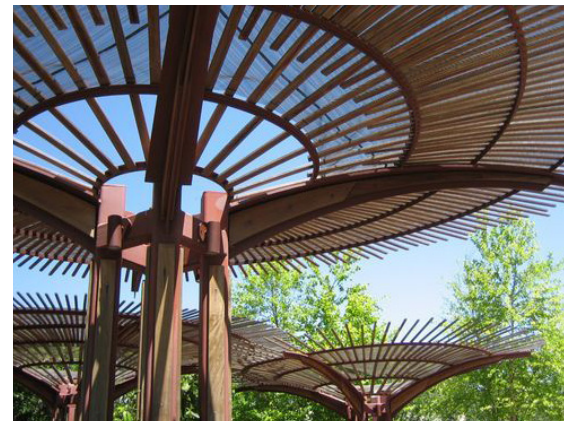


S5 Reflection Pool with Paving Motif - Opportunity to tell the story of Rakaihautū and the three pools, or puna.

Steel



S1 Signage and Interpretation - telling the authentic stories of mana whenua



S7 Pergola - Providing shade, shelter and privacy

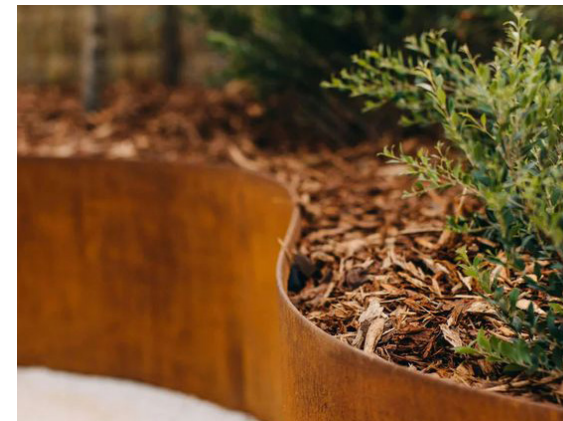
Timber



S6 Tomokaka - Entry threshold (Archway)



S10 Boardwalk



S9 Raised garden bed - edge with S8 Integrated Seating

Stone



S2 Example touchstone bolder with engraved motif



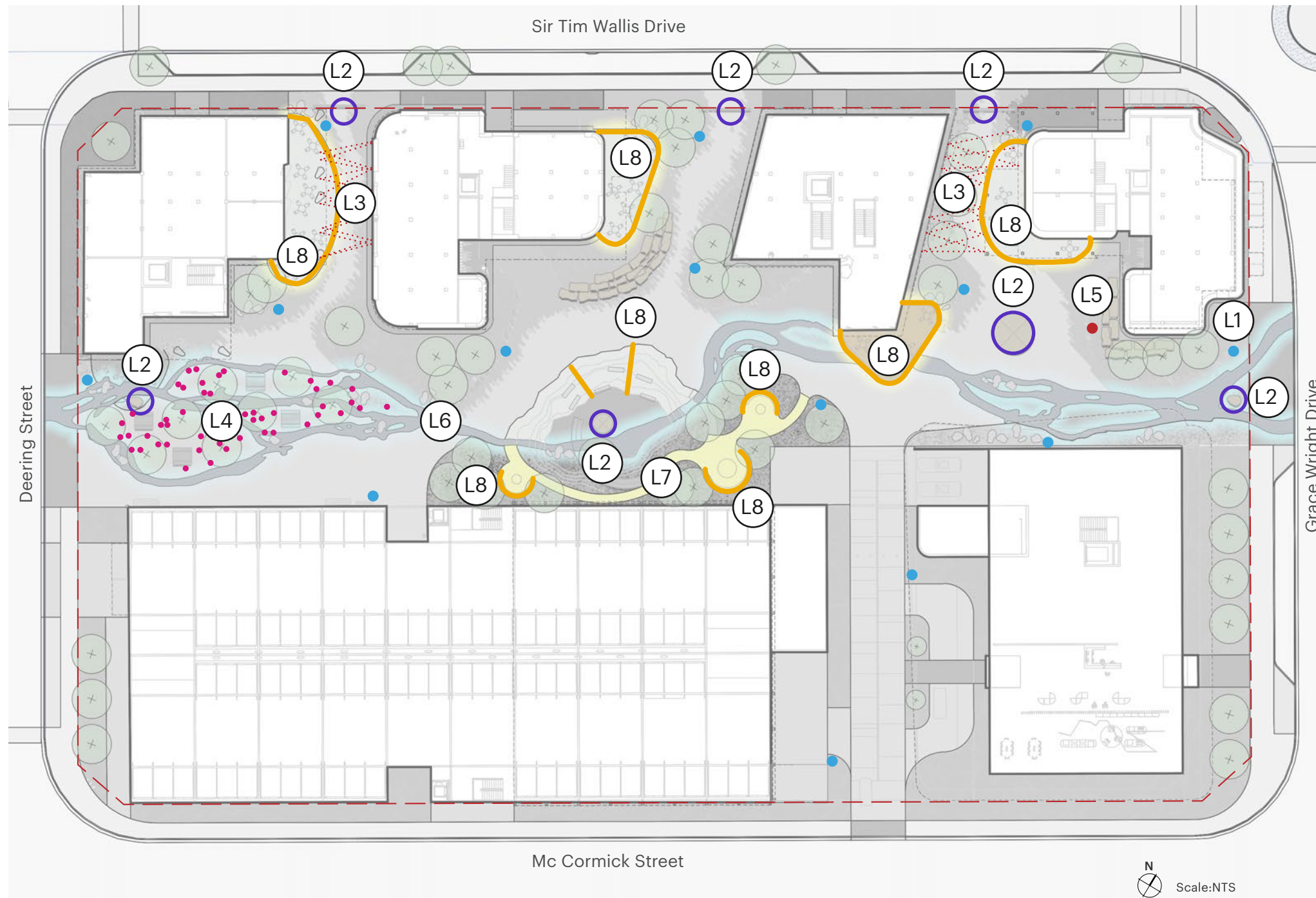
S11 Stone Boulders - Tiered informal seating



S2 Touchstone - water features to whakanoa (spiritual cleansing)

Hardscape Strategy

Indicative Lighting Strategy



The lighting strategy seeks to create different moods within the overall space and aims to enhance the site's evening-time appeal.

The design considers safety, storytelling and playfulness as key factors in making the space inviting and aesthetically pleasing to all users.

The design offers a varied and interesting approach to lighting whilst being low key, reducing upward waste light, nuisance light spill and minimising 'sky glow'. No lighting shall result in greater than 10 lux spill of light to adjoining property.

In addition to the lighting strategy, opportunities also exist for temporary festive and event lighting.

Legend

- L1 6m feature lighting pole
- L2 Sculpture/Tomokaka lighting
- ⋯ L3 Overhead festoon lighting
- ⋯ L4 In-ground lighting
- L5 6m Interactive/playful lighting pole
- L6 Coloured feature lights - to 'river'
- L7 Pathway lighting - to Rokoā/Healing Gardens
- L8 LED Strip lighting - to handrails/seating/'Floating' decks

The strategy shown is indicative and should be informed by qualified lighting engineer.

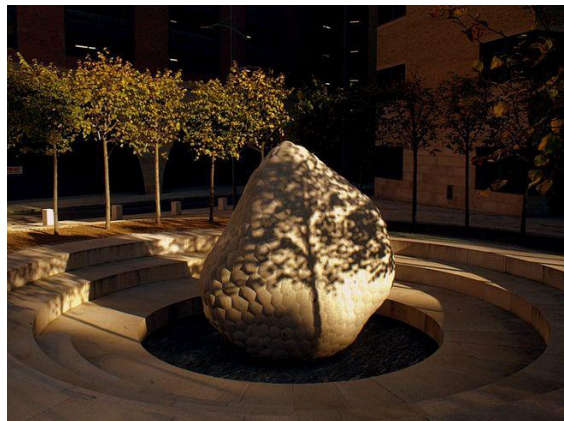
Lighting Strategy Plan

Hardscape Strategy

Sculpture/Tomokaka lighting



L2 Example image for Sculpture/Tomokaka lighting

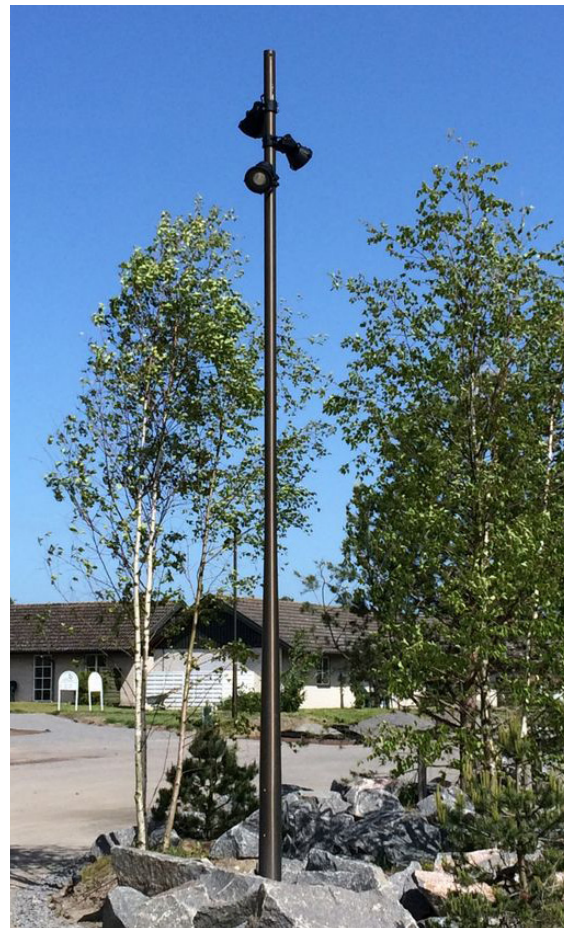


L2 Example image for Sculpture/Tomokaka lighting - subtle and soft

Overhead lighting

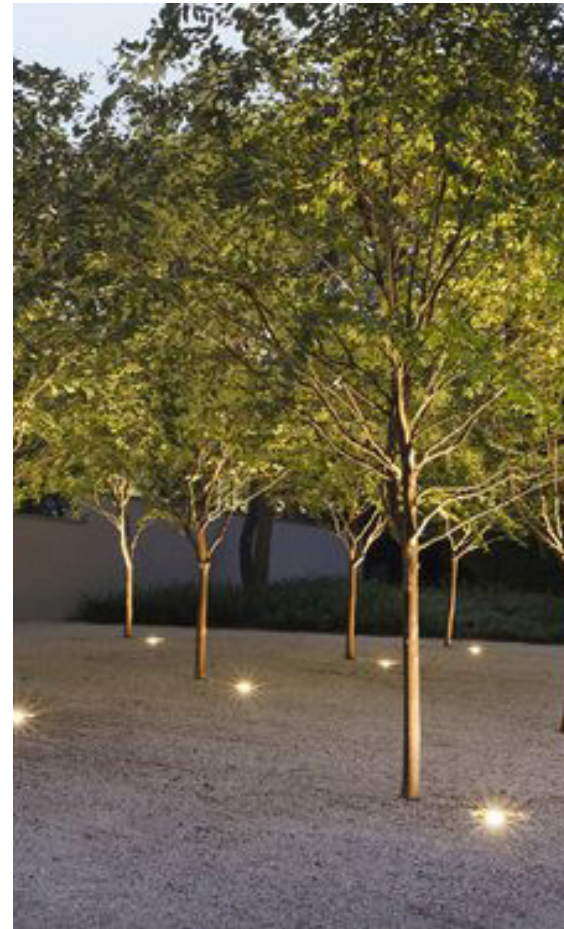


L3 Overhead festoon lighting



L1 6m feature lighting pole

In-ground lighting



L4 In-ground lighting under trees within Manaaki – Community Space



L4 In-ground lighting - opportunity to mimic stars and constellations in layout

Coloured/Playful lighting



L6 Coloured feature lights - to 'river'

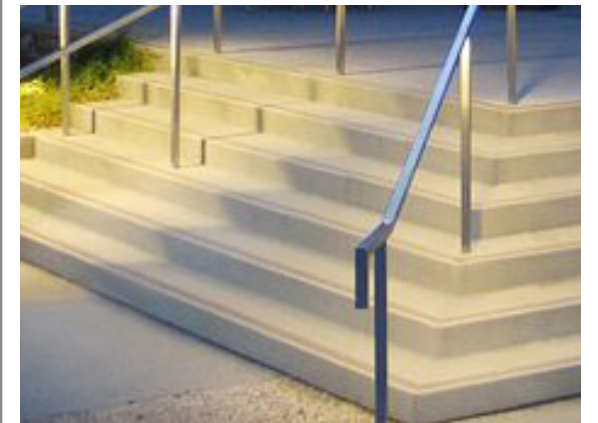


L5 6m Interactive/playful lighting pole

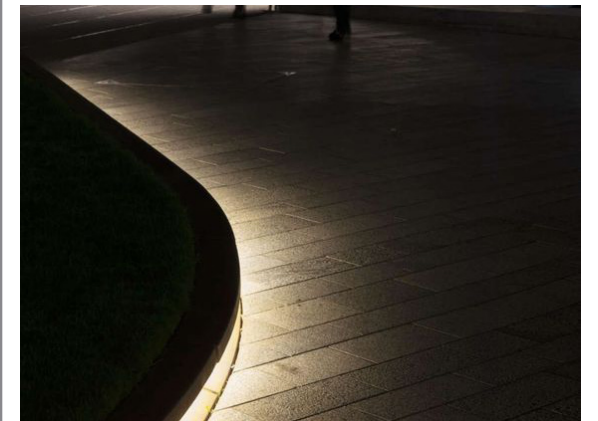
Integrated/LED strip lighting



L7 Pathway lighting - to Rokoā/Healing Gardens



L8 LED Strip lighting - to handrails



L8 LED Strip lighting - 'Floating' decks

Hardscape Strategy

Access and Circulation Strategy








Access Strategy Plan

Access through the site is prioritised towards pedestrians, utilising a 'shared space' concept with cyclists and restricting vehicular access, to allow only managed vehicle access, such as emergency services, maintenance and deliveries.

The design considers a continuous flow through the site, as each space 'bleeds' into the next, using interconnected views between each key node, actively drawing people into, and through, the space. Views are also considered from within the site to the important landscape features beyond, such as the distant mountain ranges and Mt Iron.

There are minor level changes throughout the site, creating the opportunity for all areas to be accessible to pedestrians/wheelchair users.

Legend

-  Key pedestrian building access
-  4m wide emergency access - level/clear route to be maintained
-  Vehicle Barrier/Restricted Access
-  Connections/views
-  Key nodes

Hardscape Strategy

Indicative Permeability Strategy



The design holds a strong focus on permeability, maximising green space and permeable hard surfacing on site.

Legend

- Permeable

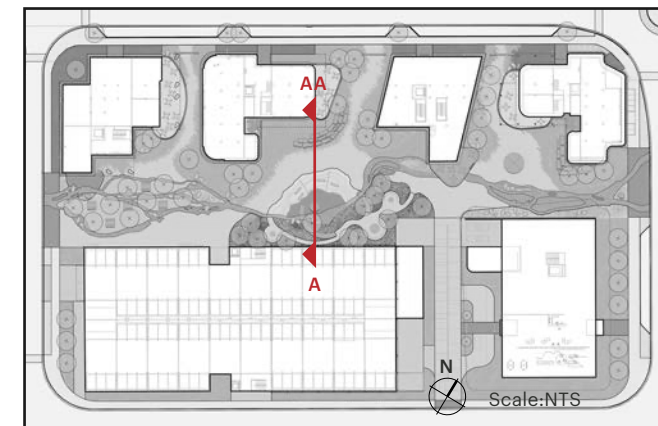
- Non-permeable

Permeability Strategy Plan

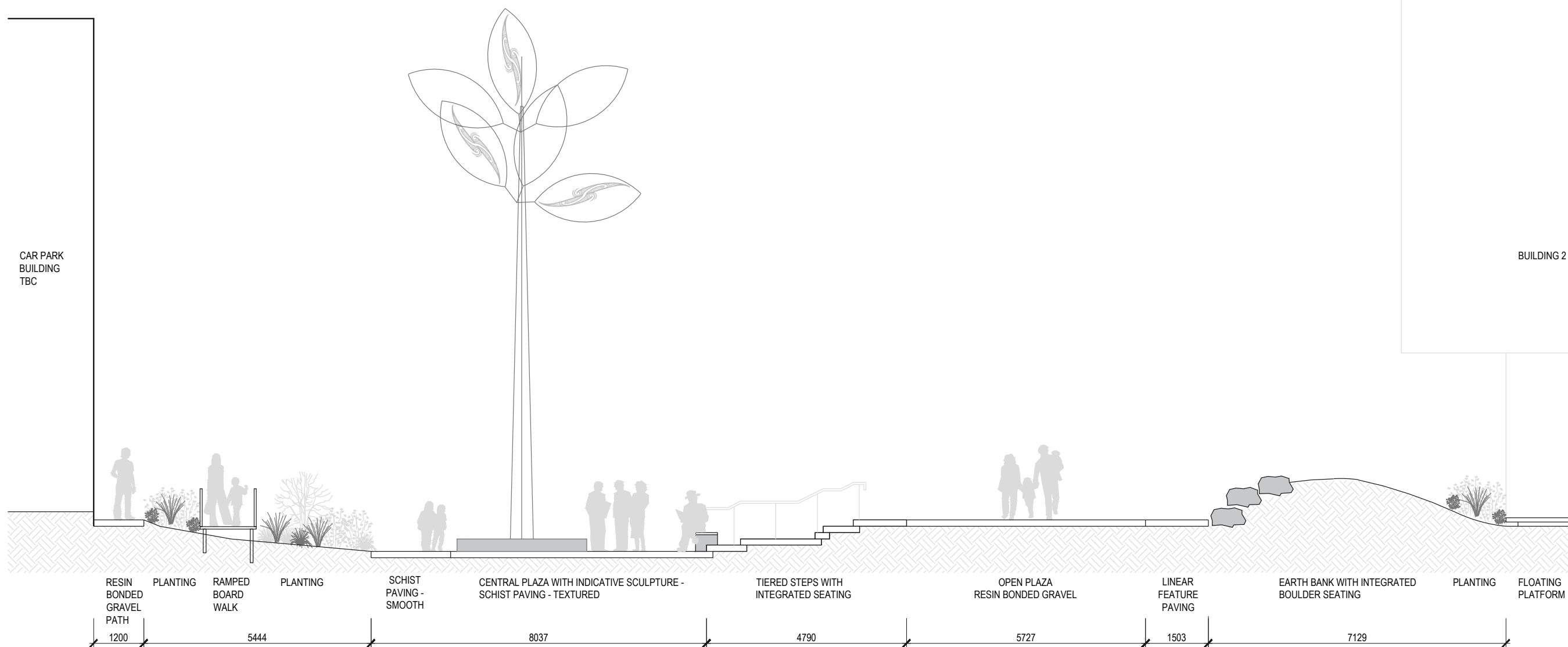


Hardscape Strategy

Indicative Sections



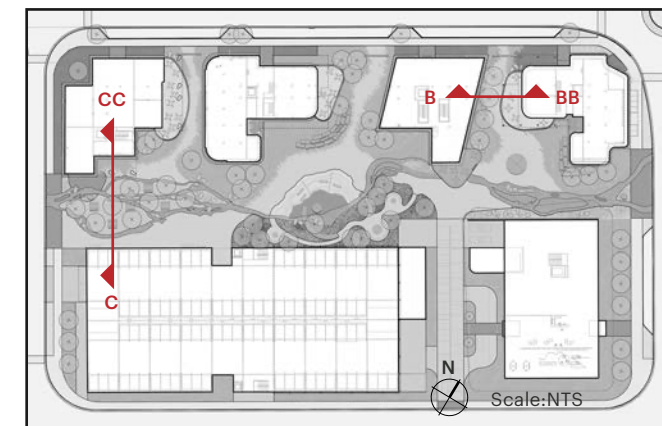
Key Plan



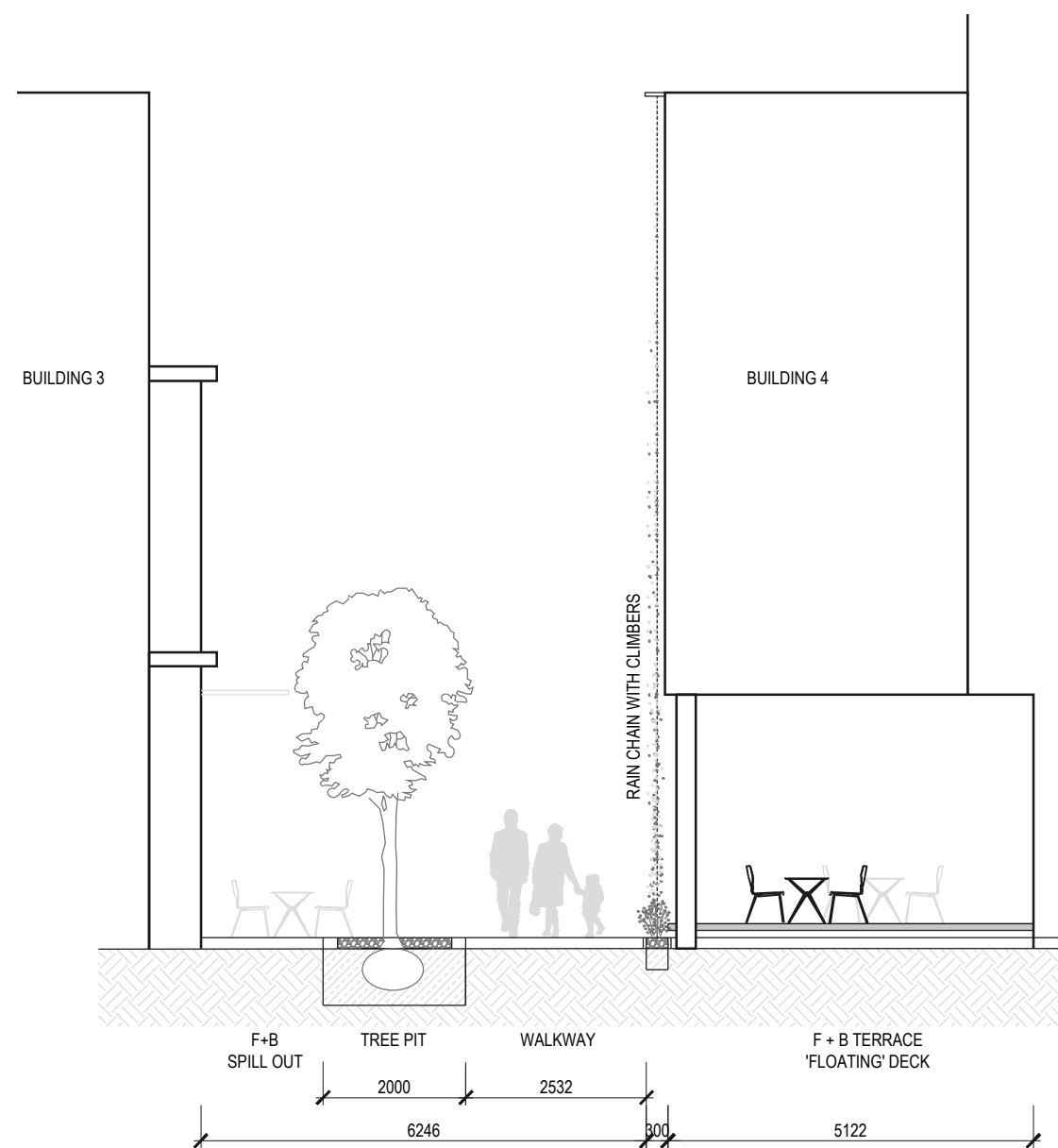
Section A-AA - 1:100@A3 - Te Ngākau – Heart centre

Hardscape Strategy

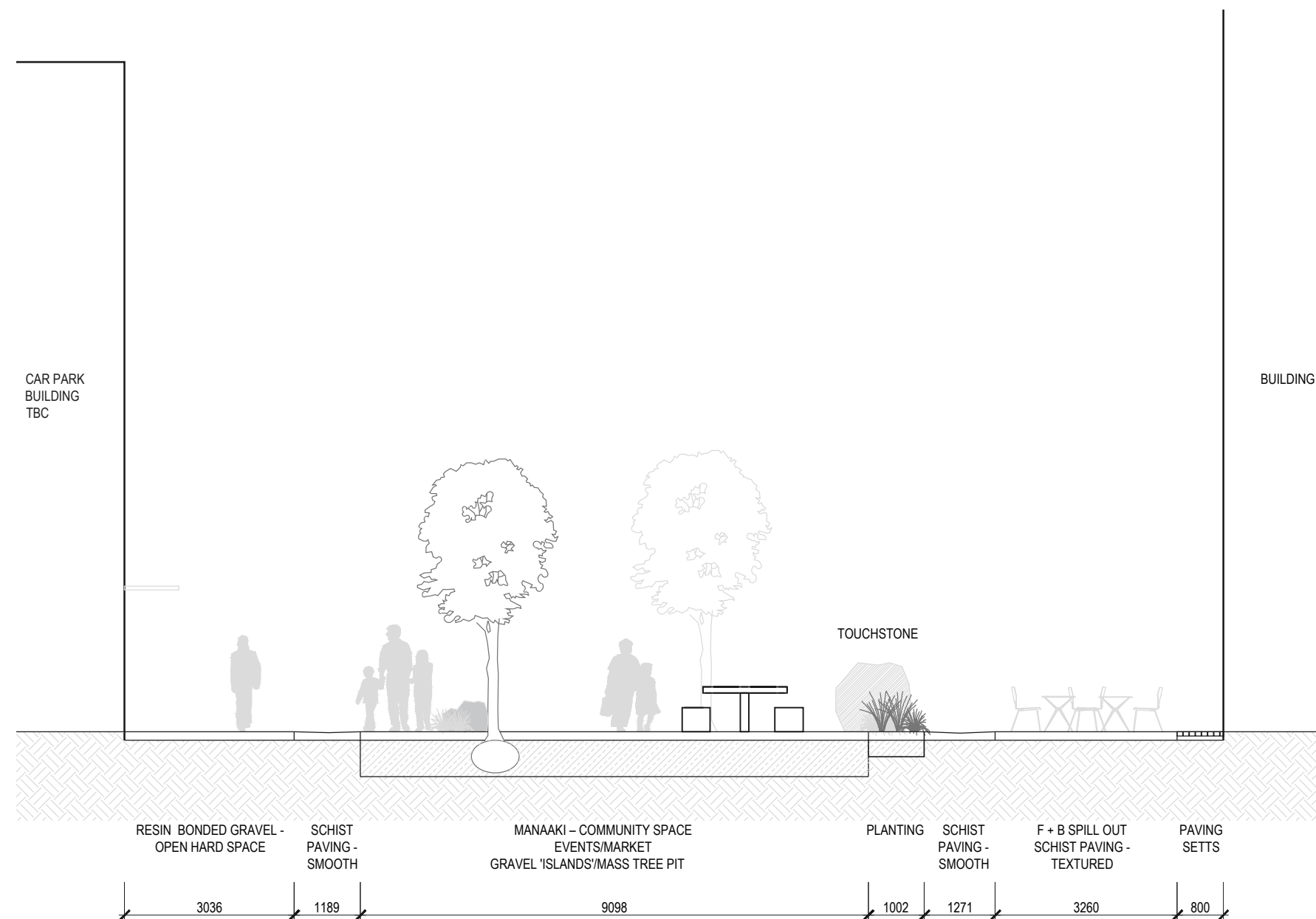
Indicative Sections



Key Plan



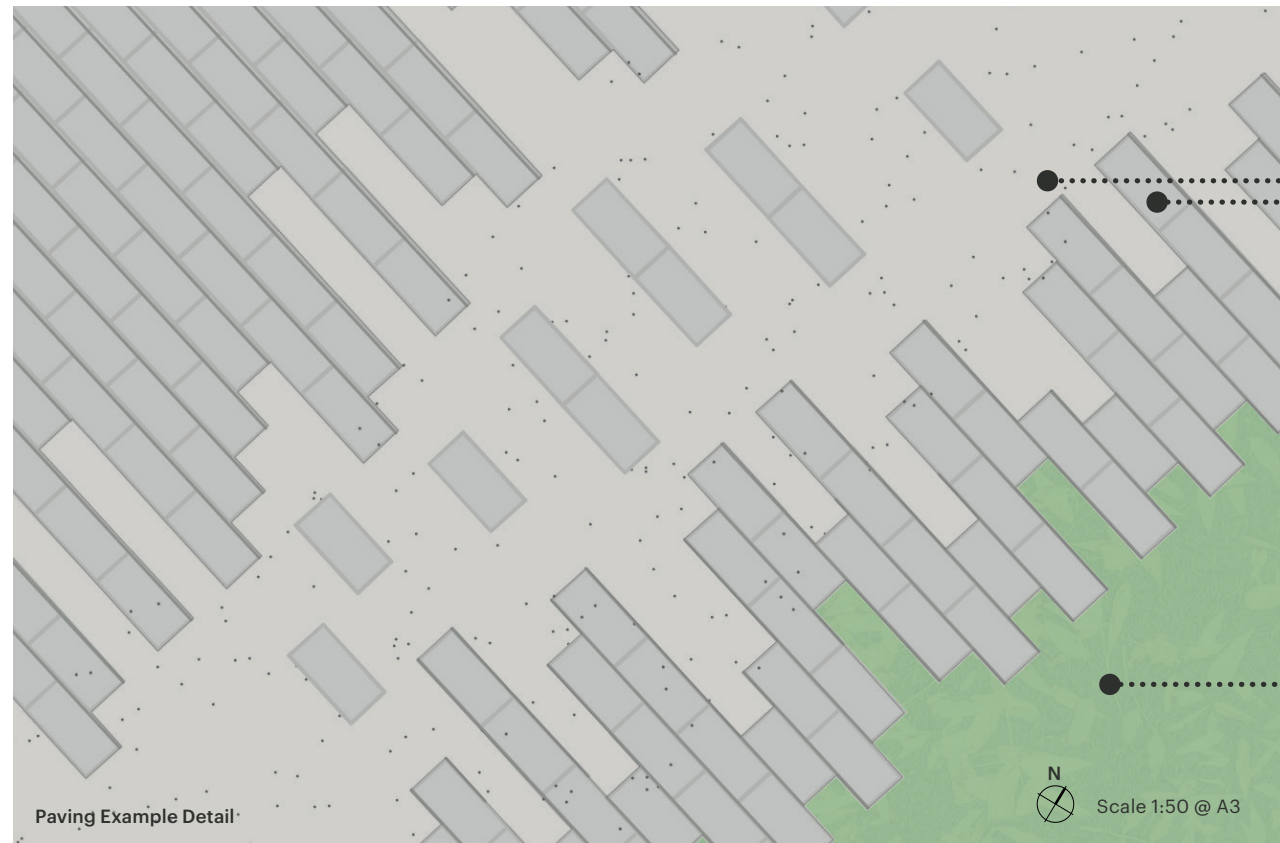
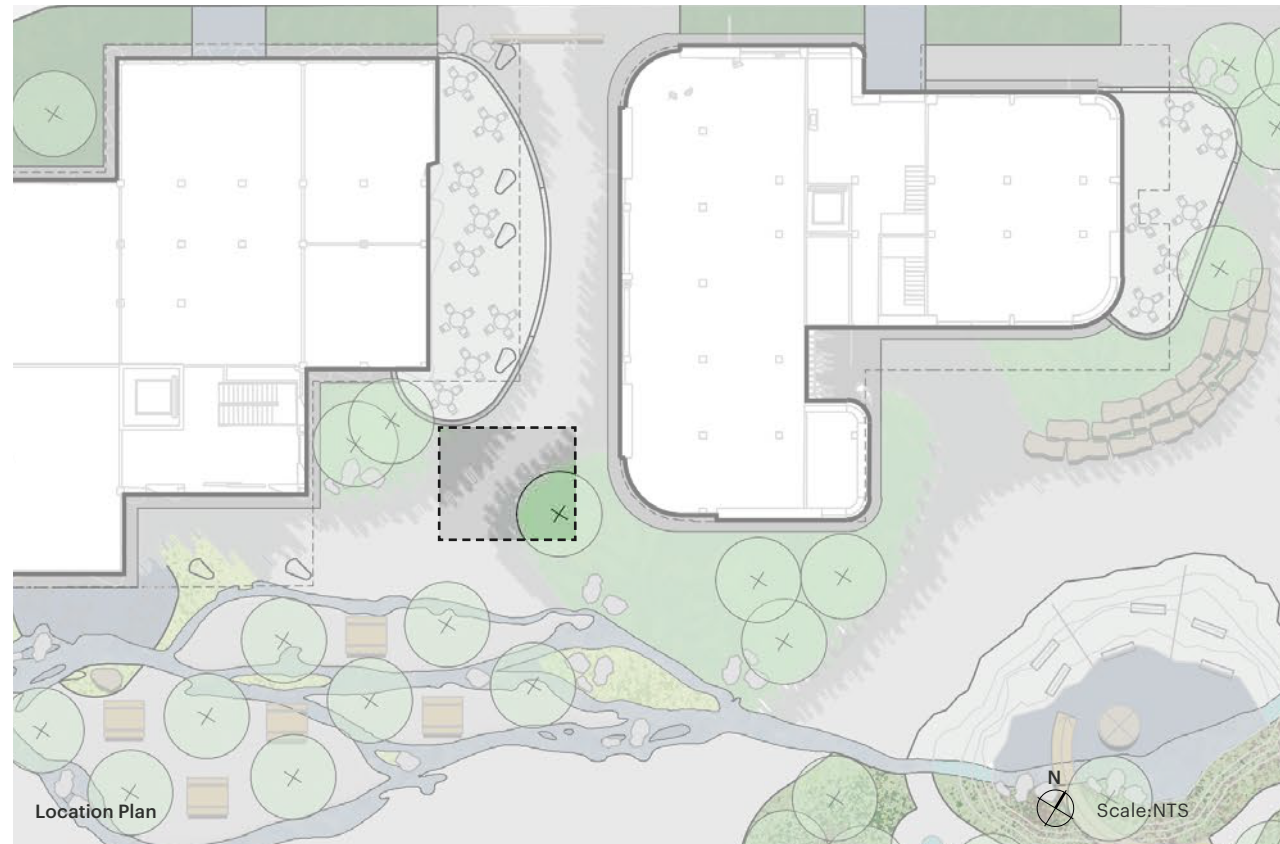
Section B-BB - 1:100@A3 - Laneway B



Section C-CC - 1:100@A3 - Manaaki - Community Space

Hardscape Strategy

Paving Example Detail



P4 Permeable Resin Bonded Gravel - Permeable



P2 Linear Feature Paving - Non-Permeable



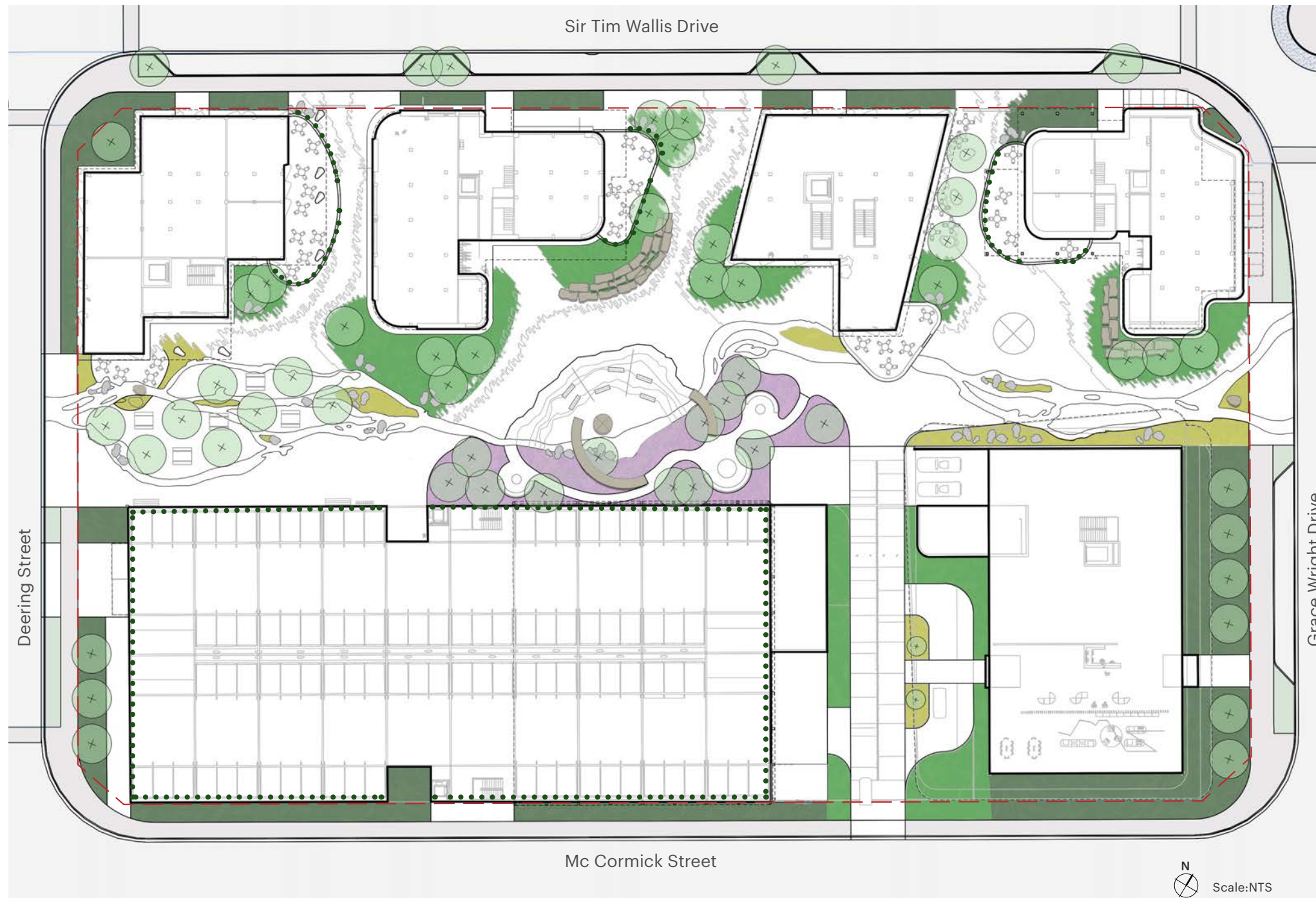
Planting integrated into paving - Permeable



Softscape Strategy

Softscape Strategy

Indicative Softscape Strategy - Planting



The softscape strategy is designed to maximise green space, enhancing birdlife and biodiversity across the site.

The design takes a biophillic approach combining a rich multi-layered mix of scales, colours and height planes, including; seasonal planting, climate resilient planting, vertical planting and climbers, native and exotic planting, and taoka species (plants that have special significance to Māori).

Legend

- Mix a** Sensory/medicinal/culinary/rokoā māori plant mix with trees
- Mix b** Planted gravel 'Islands' with grasses
- Mix c** Mixed shrubs with trees
- Mix d** Mixed shrubs border planting
- Climbers






Softscape Strategy Plan - Planting

Softscape Strategy

Indicative Softscape Strategy - Trees



Legend

-  Specimen tree (10no.)
-  Avenue tree (10no.)
-  Informal Native tree (17no.)
-  Informal forest tree (12no.)
-  Existing tree retained (5no.)

Softscape Strategy Plan - Trees



Softscape Strategy

Indicative Plant Schedule

Māori Name	Latin Name	Common name	Use Medicinal/Fragrance
Groundcover			
Panakenake	<i>Pratia angulata</i>	Lobelia	Eaten as a vegetable
Tikumu	<i>Clemisia spectabilis</i>	Mountain daisy	Waterproofing, fibre.
Climbers			
Puawānanga	<i>Clematis paniculata</i>	Flower of the skies	Seasonal indicator, climber
Akapukaea	<i>Tecomanthe speciosa</i>	Three kings vine	
Sensory Plants			
Lavender Honeysuckle Rosemary Mint Sage Jasmine Parsley Lemon balm Bergamont Curry leaves			
Small/Medium Shrubs, Grasses and Ferns			
Toetoe	<i>Austroderia</i>	toetoe	Insulation, medicinal
Korokio	<i>Corokia Cotoneaster</i>	Corokia	Medicinal, multiuse.
Kawakawa	<i>Piper excelsum</i>	Holy plant	Medicinal
Rarauhe	<i>Pteridium esculentum</i>	Bracken	Food source, bedding.
Harakeke	<i>Phormium tenax</i>	Flax	Multiuse, weaving.
Horopito	<i>Pseudowintera</i>	Pepper tree	Medicinal, seasoning
Pikopiko	<i>Asplenium bulbiferum</i>	Hen and chicken fern	Food source
Mānia	<i>Carex buchananii Mānia</i>	sedge	Insulation, bedding, weaving.
Large Shrubs /Small Trees			
Māpou or Matipo	<i>Mysine australis</i>	Red Matipo	Sacred - ceremonial
Koromiko/Kōkōmuka	<i>Hebe/Veronica salicifolia</i>	Hebe	Medicinal, tāoka species.
Kōhūhū	<i>Pittosporum tenuifolium</i>	Pittosporum	Fragrance, ceremonial.
Karamu	<i>Coprosma robusta</i>	karamu	Medicinal
Mikimiki	<i>Coprosma linariifolia</i>	mikimiki	Good for birds and geckos
Whauwhaupaku	<i>Pseudopanax arboreus</i>	Five finger	medicinal

Māori Name	Latin Name	Common name	Use Medicinal/Fragrance
Trees			
Ti kouka	<i>Cordyline australis</i>	Cabbage tree	Food source, medicinal, wayfinder, tāoka species
Tarata	<i>Pittosporum eugenoides</i>	lemonwood	Medicinal, fragrance
Tawai	<i>Beech x 5 species</i>	Silver beech. Hard beech. Red beech. Mountain beech. Black beech	
Rata	<i>Metrosideros umbellata</i>	Southern rata	Medicinal, timber
Ngaio	<i>Myoporum laetum</i>	Mousehole Tree	Used to repel mosquitoes and sandfly
Horoeka	<i>Pseudopanax</i>	Lancewood	Multiuse.
Houki/hoeheria	<i>Hoheria populnea</i>	lacebark	Medicinal, weaving, multiuse.
Kōwhai	<i>Sophora macrofolia</i>	Kōwhai	Medicinal, tāoka species.

Indicative Planting Palette

Groundcover

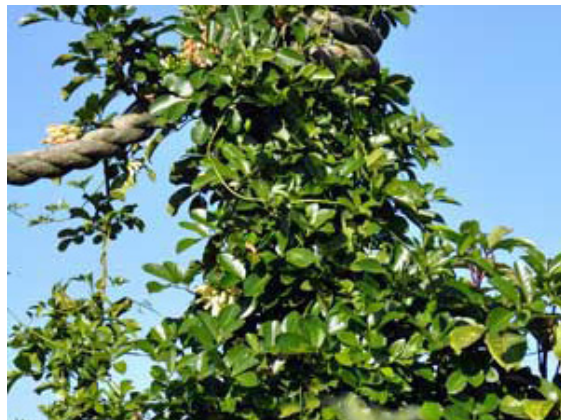


Pratia angulata - Pānakenake / Lobelia
0.2m

Climbers



Clematis paniculata - Puawhananga / New Zealand Clematis
2m



Tecomanthe speciosa - Akapukaea / Three Kings Vine
10m

Small/Medium Shrubs



Austroderia toetoe - Toetoe
3m



Corokia cotoneaster - Korokio / Corokia
Medium shrub



Piper excelsum - Kawakawa / Holy Plant
4m



Carex buchananii - Mānia / Buchanan Sedge
1.5m



Pteridium esculentum - Rarauhe / Bracken
1m



Phormium tenax - Harakeke / Flax
2m



Asplenium bulbiferum - Pikopiko / Hen & Chicken Fern
1m



Pseudowintera colorata - Horopito / Pepper Tree
Medium shrub

Indicative Planting Palette

Large Shrubs/Small Trees



Veronica salicifolia - Koromiko / Hebe
Large shrub



Pittosporum tenuifolium - Kōhūhū / Black Matipo
6m



Coprosma robusta - Karamu
5m



Coprosma linariifolia - Mikimiki / Yellow Wood
8m



Pseudopanax arboreus - Whauwhaupaku / Five finger
6m



Myrsine australis - Māpou / Red Matipo
Tall shrub

Trees



Hoheria populnea - Houki/hoeheria / Lacebark
8m



Pseudopanax - Horoeke / Lancewood



Myoporum laetum - Ngaio / Mousehole Tree
7m



Sophora microphylla - Kōwhai
10m



Nothofagus Solandri - Black Beech 'cliffortoides'
10m



Metrosideros umbellata - Rata / Southern Rata
15m



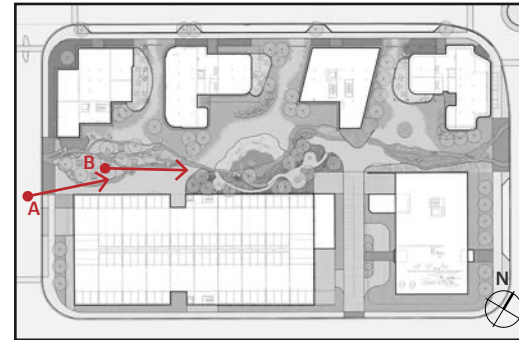
Pittosporum eugenioides - Tarata / Lemonwood
12m



Cordyline australis - Cabbage Tree



Appendix



Key Plan

P1a	Natural Stone Schist Paving - Smooth	S4	Large Sculpture - Centre Piece
P4	Permeable Resin Bonded Gravel	S9	Raised garden bed - edge
P5	Permeable Gravel to tree surrounds and 'gravel islands'		



Manaaki - Community Space
View A - Looking Northeast



Manaaki - Community Space
View B - Looking Northeast