

# RETHINK, REDUCE, REUSE AND RECYCLE

MAKE LANDFILL THE LAST RESORT

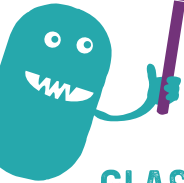


PLEASE RECYCLE WITH CARE

# WHAT GOES IN MY RECYCLING BINS?

## GLASS RECYCLING

IF IN DOUBT  
LEAVE IT OUT



## GLASS BOTTLES & JARS ONLY

Only glass bottles and jars that contained food or drink can be recycled. Other glass has to go in the rubbish bin, including wine glasses, drinking glasses, perfume bottles, moisturiser jars, heat-proof glass (like Pyrex), windows and mirrors. Lids and crockery go in the rubbish too.

## MIXED RECYCLING



- ♻️ CLEAR PLASTIC BOTTLES ONLY
- ♻️ PLASTIC BOTTLES & CONTAINERS
- ♻️ PLASTIC BOTTLES & CONTAINERS

- ♻️ CANS
- ♻️ CARDBOARD
- ♻️ PAPER

Put soft plastics, meat trays, biscuit trays, punnets, coloured bottles ♻️, plastics ♻️ ♻️ ♻️ or ♻️ and pizza boxes in the rubbish if you can't avoid or reuse them.

# WHAT GOES IN MY RUBBISH BIN?

## RUBBISH



**E.G. SOFT PLASTICS, COFFEE CUPS, DRINK CARTONS,  
PIZZA BOXES, PLASTICS ♻️ ♻️ ♻️ & ♻️**

Don't put hot ashes, lithium batteries, flammable aerosols or chemicals in the rubbish bin. They might leak or start a fire. Go to [www.qldc.govt.nz](http://www.qldc.govt.nz) for information on how to dispose of hazardous waste safely.

## EMPTY, CLEAN, RECYCLE



What you put in the bin matters, so please follow the golden rules:

Empty out food & liquid, & clean bottles & containers before recycling them.

Make sure your recycling is loose (not in boxes or bags).

Lids, pumps & triggers go in the rubbish.

Items bigger than 3 litres & smaller than your palm also go in the rubbish.

**BINS OUT  
BY 7AM**

## ON COLLECTION DAY

Put your bins out by 7am. Place bins 50cm apart, on the kerbside close to the road. They should face the road with the lids closed flat. Please take a minute to put your bins out properly. It helps our drivers get around their routes quicker so less traffic will get stuck behind their trucks.

## KNOW HOW TO SAY NO

Only plastics recycled in New Zealand can go in your yellow bin:



clear bottles only



bottles and containers



bottles and containers

Remember, you can only recycle plastic packaging from the kitchen, bathroom and laundry.

Use the rubbish bin for all other plastics that you can't avoid or reuse.

This includes all soft plastics, meat & biscuit trays, punnets, coloured bottles ♻️ & all plastics ♻️♻️♻️ or ♻️.

Know what you can recycle, say no to the rest.



## BIN DAY REMINDERS



Rubbish is collected every week. The blue glass recycling bin and yellow mixed recycling bin are collected on alternate weeks.

Sign up for a weekly bin day text or email reminder at [reminders.saveourstuff.co.nz](http://reminders.saveourstuff.co.nz)

