



NB. photo by Others

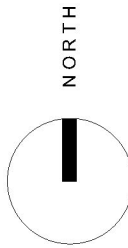
Graphic Attachment to accompany Assessment of
Environmental Effects

**Proposed Subzone to Gibbston Character Zone
Gibbston Valley, Queenstown Lakes District**

Prepared

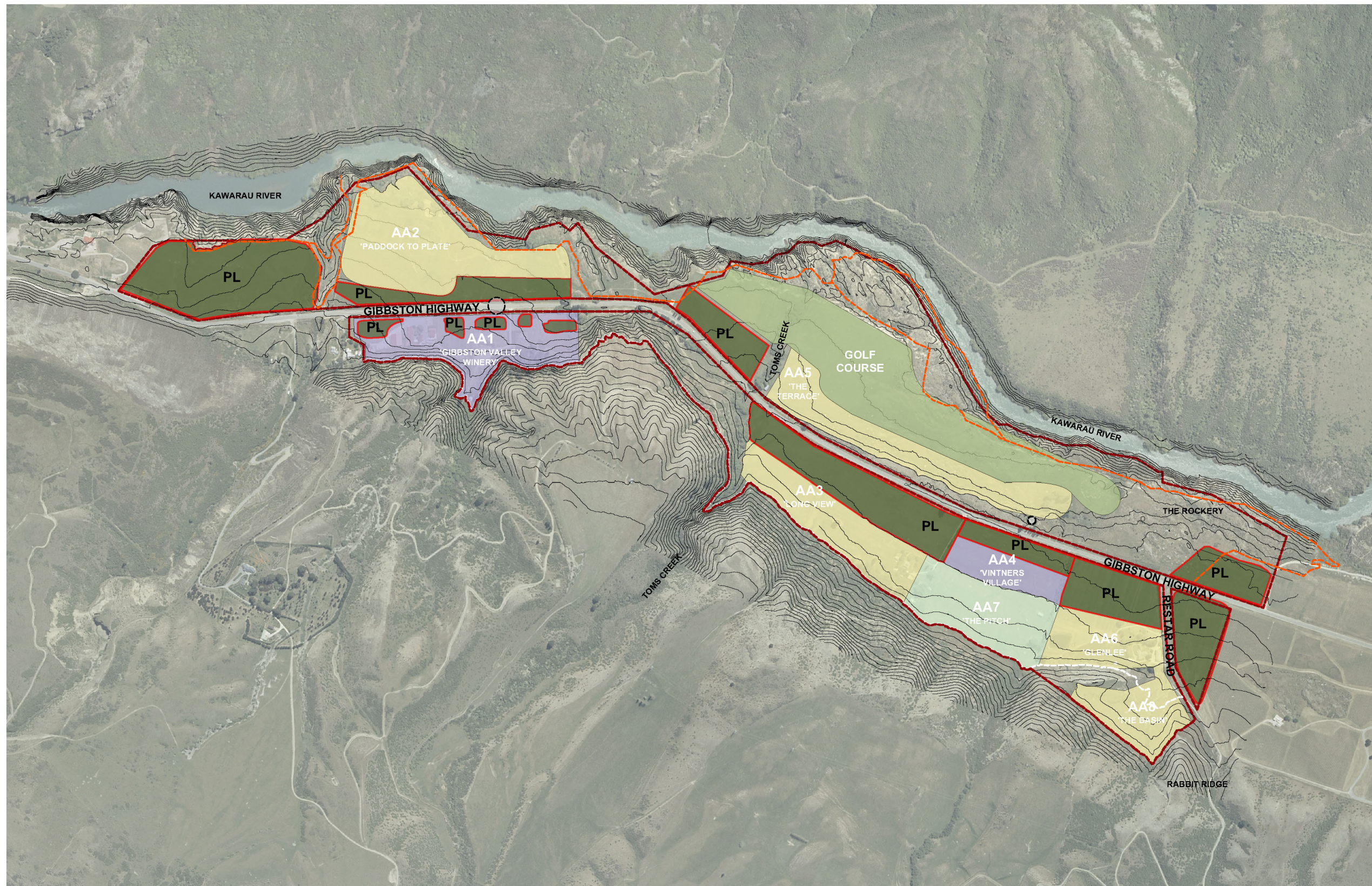
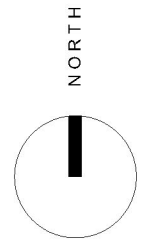
By

Nikki Smetham









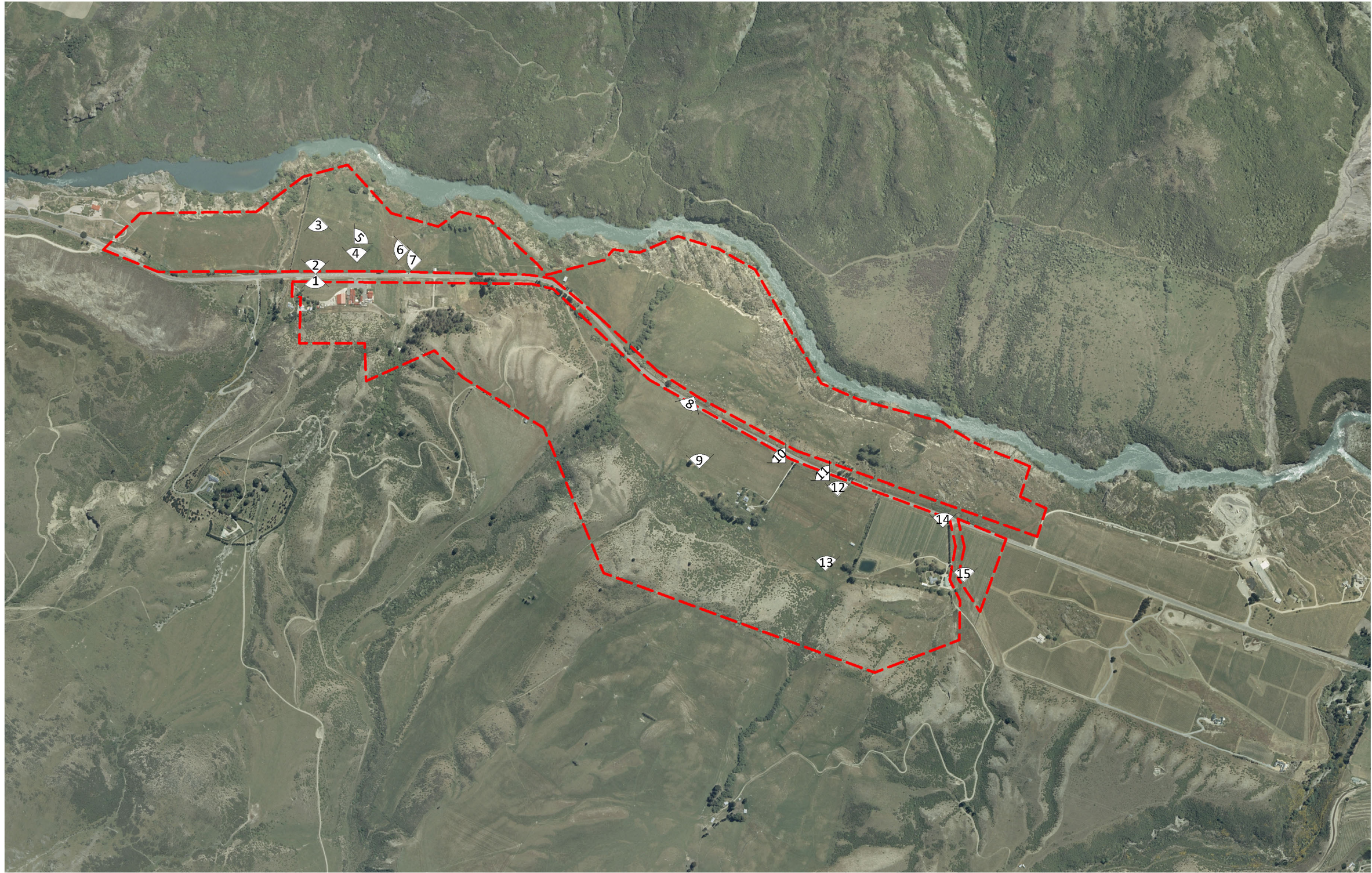
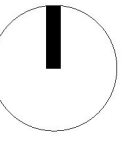
LEGEND
- - - Subzone Site Boundary

Map/Aerial Photo Source: TopoMap



LEGEND

-  Subzone Boundary
-  380m Contour Line
-  Native Planting
-  Gibbston River Cycle Trail
-  Heritage Feature
-  SH6 Intersection
- PL** Productive Landscape Planting
- AA** Activity Area



LEGEND

-  Photo Viewpoints
-  Site Boundary

Map/Aerial Photo Source: LINZ



Viewpoint 1. Area 1 - Gibbston Valley Winery looking South



Viewpoint 2. Area 1 - Gibbston Valley Winery looking North over Gibbston Highway



Viewpoint 3. Area 2 - Looking South towards Gibbston Valley Winery



Viewpoint 4. Area 2 - Proposed Development Node looking North



Viewpoint 5. Area 2 - Proposed Development Node looking North East



Viewpoint 6. Area 2 - Gibbston Highway looking West



Viewpoint 7. Area 2 - Looking West towards Gibbston Valley Winery



Viewpoint 8. Area 3 - Gibbston Highway looking North to Activity Area 5



Viewpoint 9. Area 7 - Looking North towards AA4 Vinters Village and Gibbston Highway



Viewpoint 10. Gibbston Highway looking West towards Activity Area 3



Viewpoint 11. Station boundary with Gibbston Highway looking North to Activity Area 5 entrance and Cobb Cottage



Viewpoint 12. Gibbston Highway looking towards Activity Area 5



Viewpoint 13. Looking South up to Activity Area 7 open space and West towards Activity Area 3



Viewpoint 14. Area 6 to South and North to Activity Area 5



Viewpoint 15. Looking North towards Gibbston Highway



- key
- tees and holes
 - fairways and driving range
 - managed dryland meadow
 - tussock
 - grey shrubland
 - indigenous savannah
 - archaeology - sparse revegetation
 - faultline - managed dryland meadow
 - wetland
 - vineyard
 - evergreen trees
 - amenity/ orchard
 - orchard
 - proposed native trees
 - existing trees to be retained
 - overflow carparking
 - proposed LPG storage
 - roads
 - cart paths and pedestrianised roads
 - walkways
 - drystack walls
 - units - c
 - units - d
 - units - b
 - units - a
 - proposed building
 - pool
 - watercourses
 - wetland/ pond
 - major contours
 - minor contours
 - legal boundaries

Gibbston Valley STATION	PATERSON PITTS SURVEYING - LAND PLANNING - LAND DEVELOPMENT - RESOURCE MANAGEMENT TELEPHONE 03-442-3448 FACSIMILE 03-442-3449 EMAIL p.pitts@greenbelt.co.nz	CONSTRUCTION MANAGEMENT SERVICES	Natural Solutions for Nature Limited	MICHAEL WYATT ARCHITECT LTD	Turner Macpherson golf design	Rev: 28/05/09	Description:	By: MPA1416Q-03.vwx
<small>© 2009 Gibbston valley station development proposal master plan DP 01 ralf krüger / alan cutler nigel cowburn 27/08/07 1:8000 @ a3, 1:4000 @ A1 all right reserved to morgan+pollard associates 145 glenda drive p.o. box 1269 queenstown nz p 03 442 3448 f 03 442 3449 office@greenbelt.co.nz</small>						035	106	morgan+pollard associates