

Earnslaw Park

QLDC Reserves



Located in the heart of Queenstown, Earnslaw Park is a small open green space with views of the mountains and situated on Queenstown Bay. This area is used by residents and visitors to relax, have picnics and to enjoy the views and atmosphere of town.



Location: Beach Street, Queenstown.



Features: The space has limited public toilets and power. Events are expected to supply their own toilet and bin facilities.



Event suitability: This reserve is suitable for recreation and cultural events, and events that benefit the community or district.



Price: Prices vary based on booking type. Please scan to see our pricing document or enquire about booking this space.



Submit an enquiry.

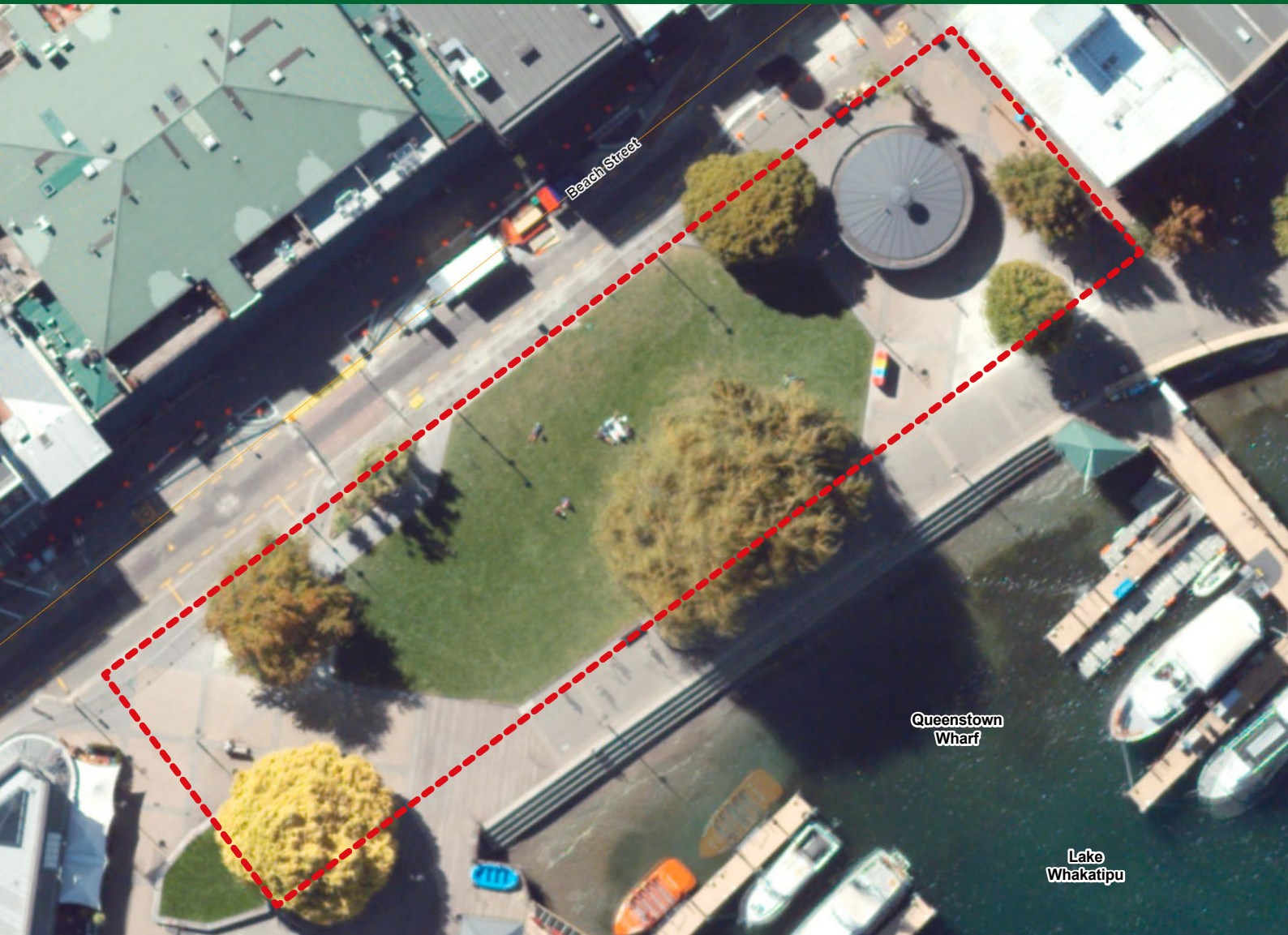
All activities will need to comply with the use and management of the park and we will assess this once we receive your request. If you'd like to learn more in the meantime, feel free to visit our [Reserve Management Plans](#) webpage for further details.



QUEENSTOWN
LAKES DISTRICT
COUNCIL

Earnslaw Park

QLDC Reserves



Planning an activity or event on one of our beautiful reserves?

Some events may require an **event permit**, **resource consent**, or a **licence to occupy**, depending on the nature and duration of your activity. We'll assess what's needed once we receive your request.

Here are a few key things to keep in mind (list not exhaustive):

- » **Amplified sound after 8:00pm** requires Resource Consent.
- » Events (including setup and pack-down) that run for **6 days or more**, or **40 days in a year**, will need a **Licence to Occupy**.
- » **Vehicles, structures, tents, marquees, or steel pegs** are not allowed on turfed areas without specific approval from QLDC. Turf protection may also be required.
- » There may be other permits or consent conditions depending on your event.

To find out what permissions you might need, please check out our [Event Organiser Handbook](#).



QUEENSTOWN
LAKES DISTRICT
COUNCIL