

ATTACHMENTS

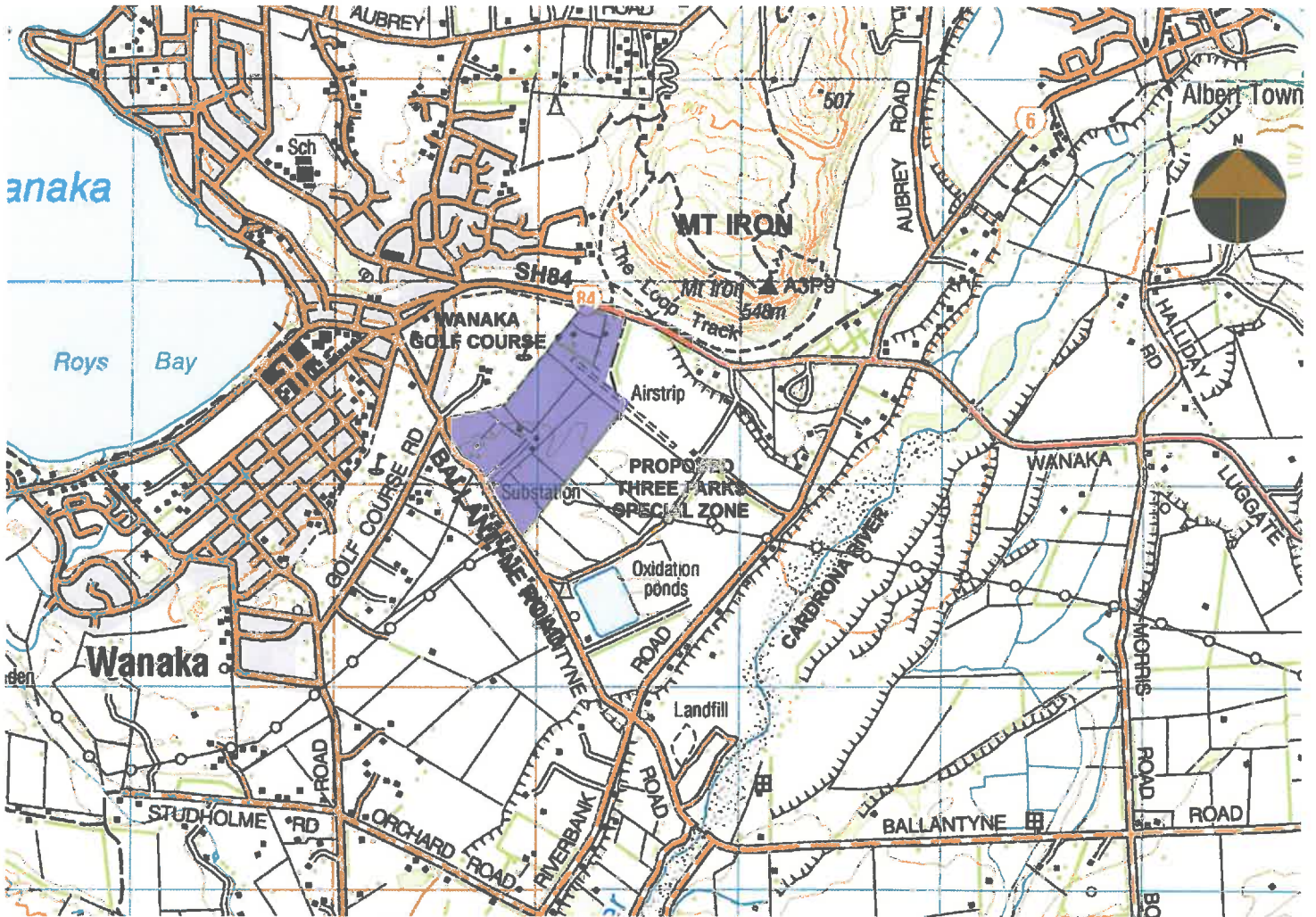
**To Landscape Assessment Report
North Three Parks
Proposed Plan Change 4**



ASLA Ltd June 2010

CONTENTS

- Figure 1.** Site Location
- Figure 2.** Site Location -Aerial Photo Base
- Figure 3.** Site Ownership Details and Surrounding Landuse
- Figure 4.** Existing Landform
- Figure 5.** Existing Vegetation - North End
- Figure 6.** Existing Vegetation - South End
- Figure 7.** Wanaka Structure Plan
- Figure 8.** Wanaka Transportation Strategy
- Figure 9.** Upper Clutha Walking and Cycling Strategy
- Figure 10.** Cultural Context
- Figure 11.** Site Analysis
- Figure 12.** Site Analysis with Proposed Zoning Overlay



Map Source: MapToaster TopoNZ V5.0 1:50 000 2009

Figure 1. SITE LOCATION

**NORTH THREE PARKS
Proposed Plan Change 4**

prepared by



June 2010

for Paterson Pitts Wanaka
on behalf of
Ballantyne Investments Ltd and Queenstown Lakes District Council

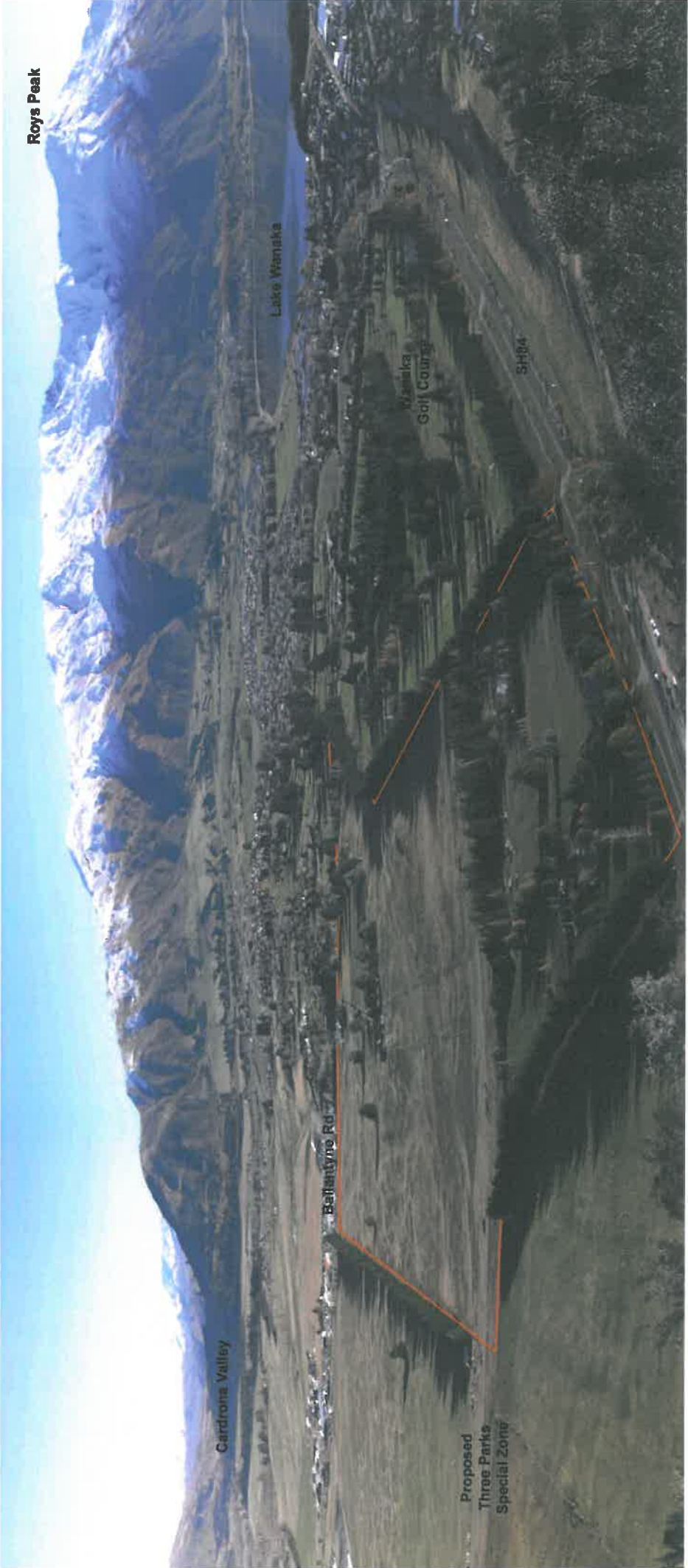


Figure 2. SITE LOCATION
View Southwest from Mt Iron
NORTH THREE PARKS
Proposed Plan Change 4

(Source: A Steven June 2010)



June 2010
 for Paterson Pitts Wanaka
 on behalf of
 Ballantyne Investments Ltd and Queenstown Lakes District Council



Figure 3. Site Ownership Details and Surrounding Landuse NORTH THREE PARKS Proposed Plan Change 4

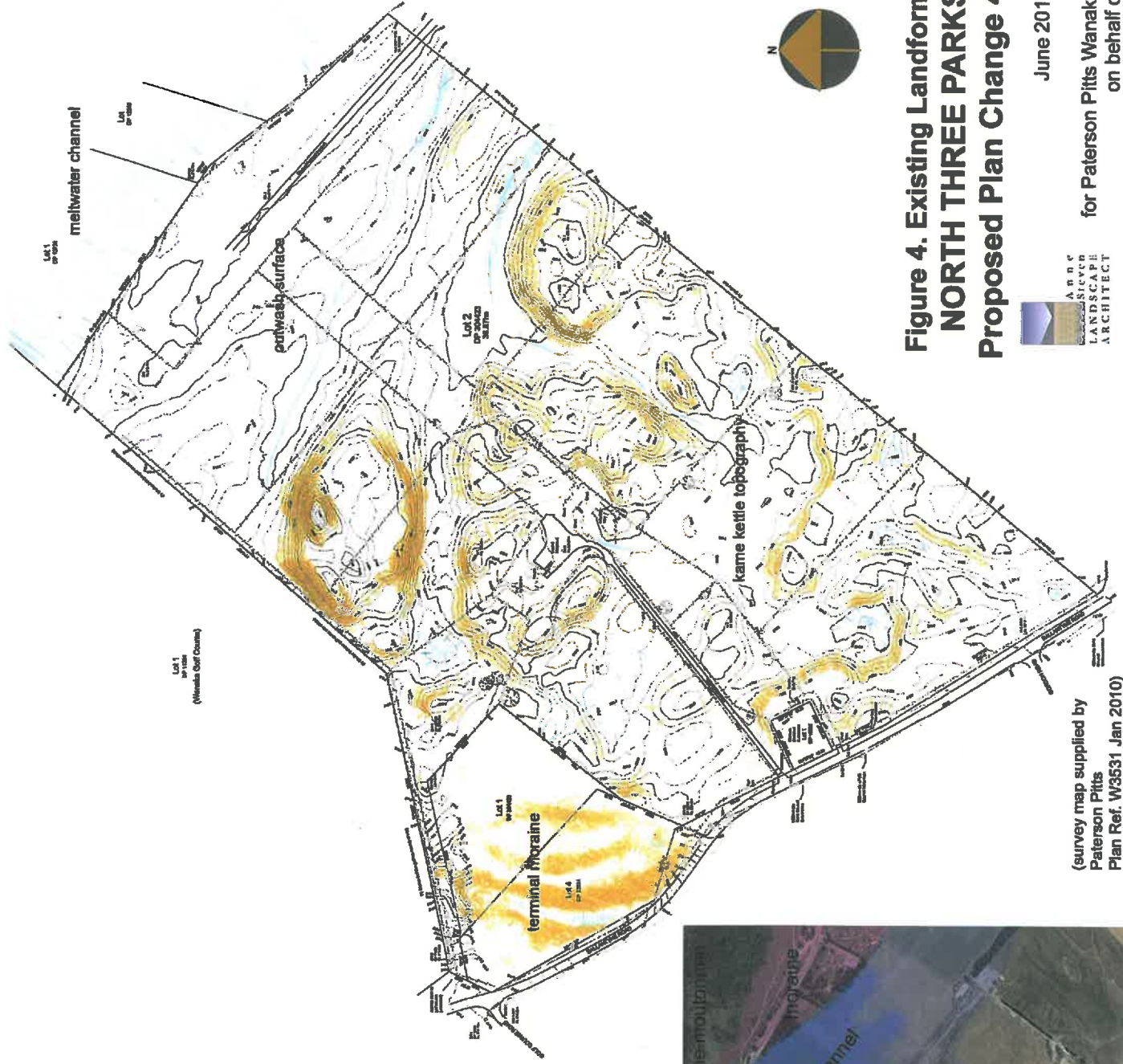
June 2010




for Paterson Pitts Wanaka on behalf of



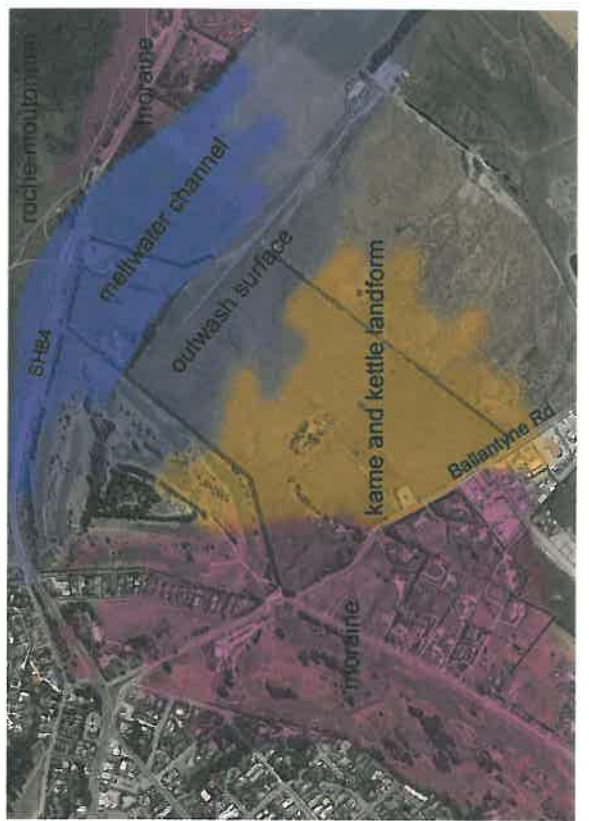
Bailantyne Investments Ltd and Queenstown Lakes District Council

(aerial photo base supplied by Paterson Pitts)



-  enclosed hollow
-  steeper slopes
-  relict channel

Inset: Structural Landforms of Site and Surrounds

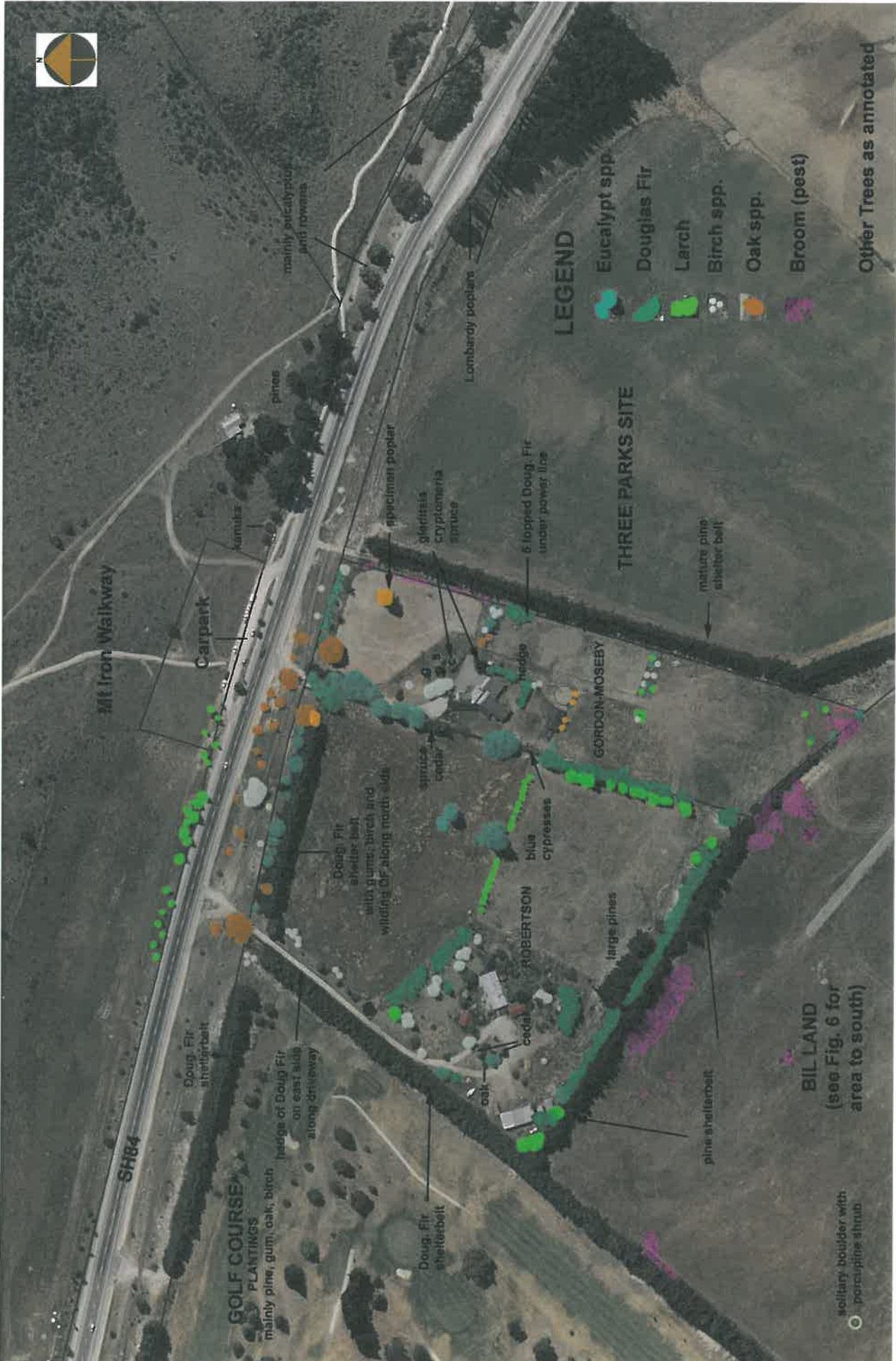


**Figure 4. Existing Landform
NORTH THREE PARKS
Proposed Plan Change 4**



June 2010
for Paterson Pitts Wanaka
on behalf of
Ballantyne Investments Ltd and Queenstown Lakes District Council

(survey map supplied by
Paterson Pitts
Plan Ref. W3531 Jan 2010)



(Aerial Base supplied by Paterson Pitts June 2010)

June 2010
 for Paterson Pitts Wanaka
 on behalf of
 BALLANTYNE INVESTMENTS LTD
 LANDSCAPE ARCHITECT

Figure 5. Existing Vegetation North End - NORTH THREE PARKS Proposed Plan Change 4

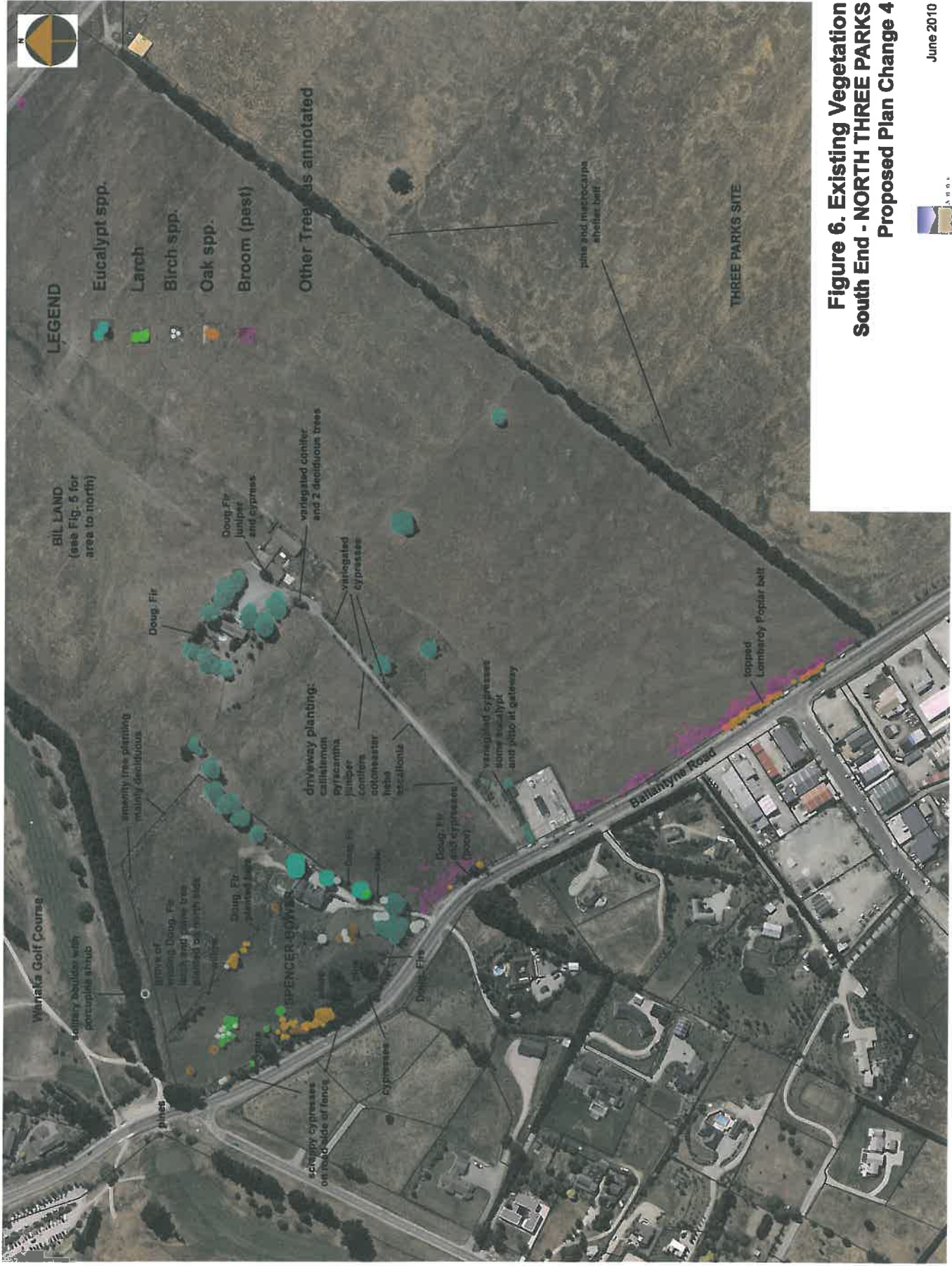






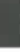




















Figure 6. Existing Vegetation South End - NORTH THREE PARKS Proposed Plan Change 4

(Aerial Base supplied by Paterson Pitts June 2010)

Zoning Proposed

-  Structure Plan Inner Growth Boundary
-  Structure Plan Outer Growth Boundary
-  Outstanding Natural Landscape (ONL) Line
-  ONL Line Not Confirmed
-  Road Network (Indicative)
-  Retail Core
-  New Open Spaces/Reserves
-  Wanaka Town Centre
-  Education
-  Area Subject to Further Study
-  Visitor Accommodation Overlay
-  Urban/Landscape Protection
-  Existing Open Spaces/Reserves/Golf Club
-  Deferred Mixed Business/Office/Technology
-  Deferred Future Commercial/Retail
-  Commercial/Retail
-  Mixed Business
-  Existing Business/Industrial
-  Industrial Yard based
-  Medium-high Density Residential
-  Low Density Residential
-  Landscape Protection Area
-  Mixed Use Zone
-  Existing Zoned/Developed Areas
-  Water

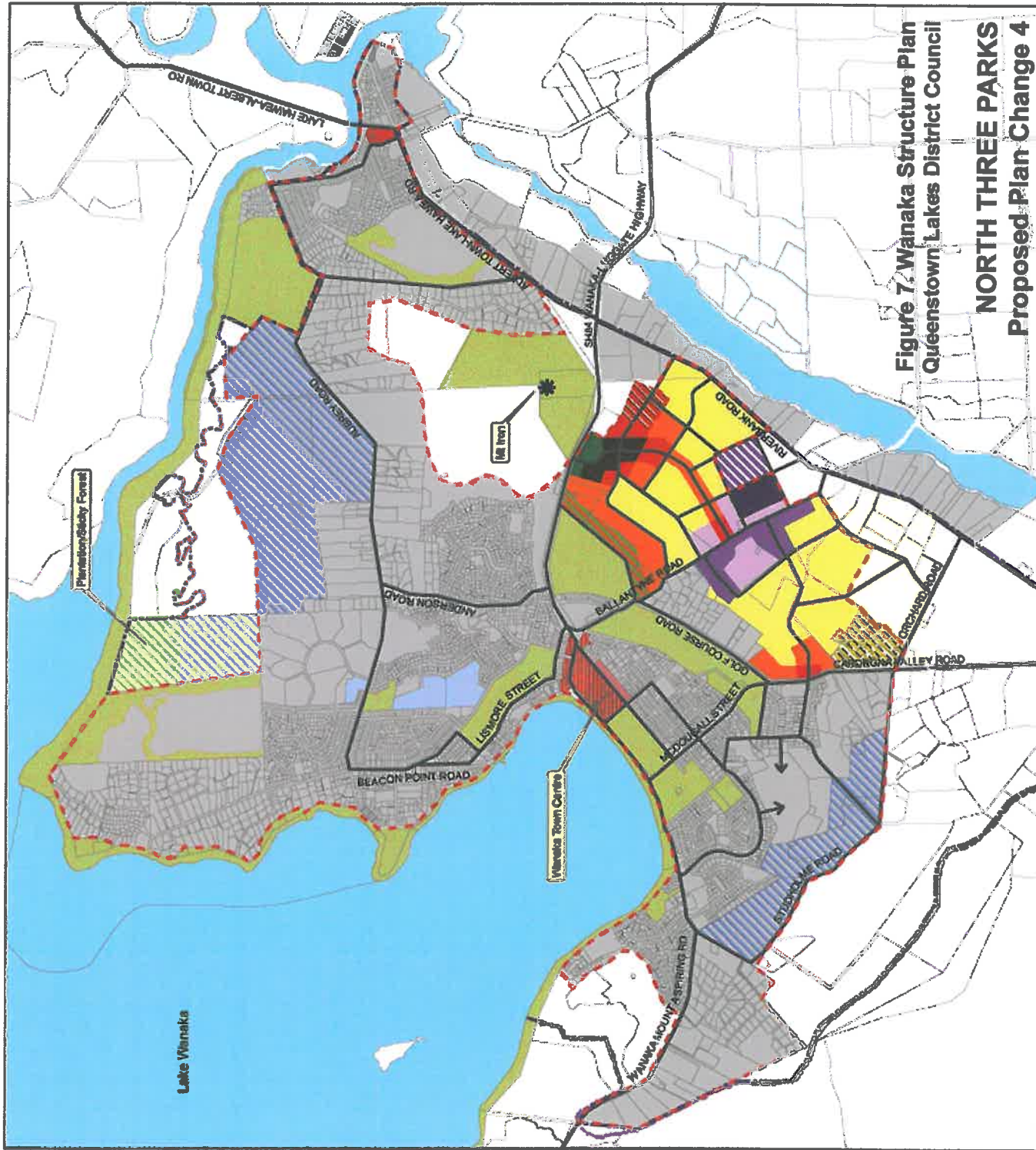


Figure 7. Wanaka Structure Plan
Queenstown Lakes District Council
NORTH THREE PARKS
Proposed Plan Change 4

Indicative zone boundaries only, subject to review at implementation stage

lanaka

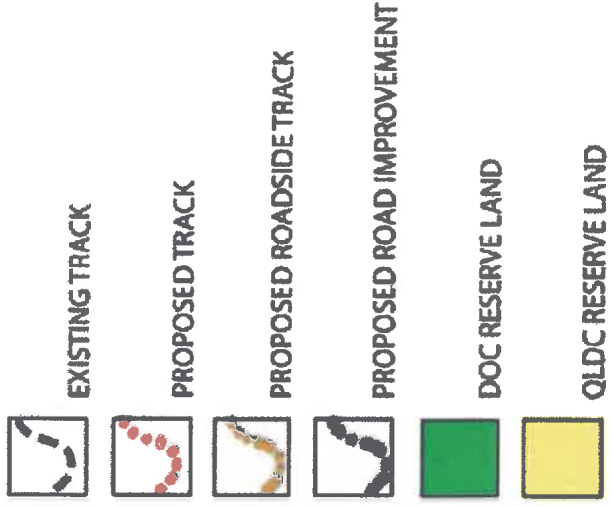
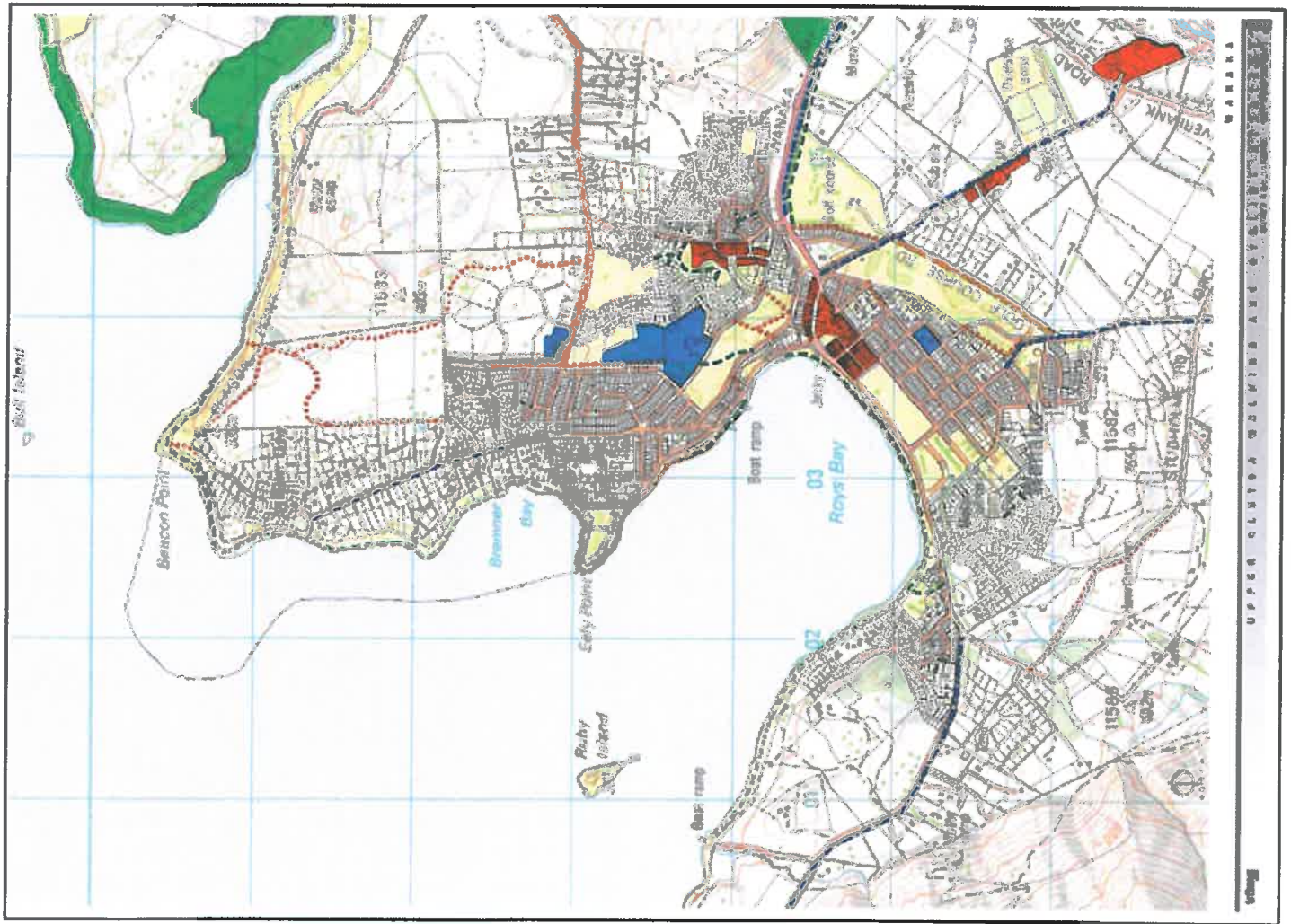





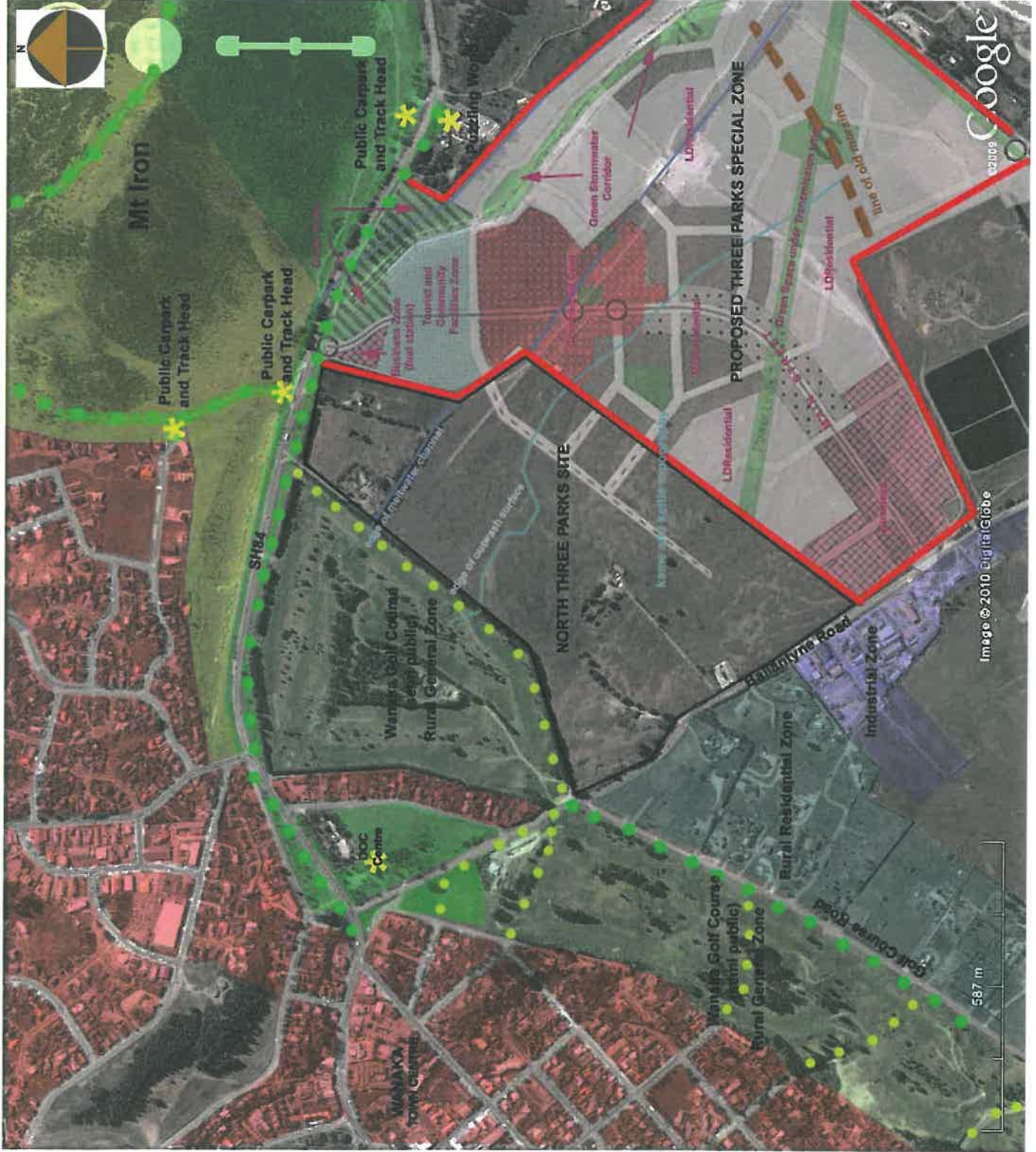


Figure 9.
Upper Clutha Walking and Cycling Strategy
Upper Clutha Tracks Trust
NORTH THREE PARKS
Proposed Plan Change 4

LEGEND

-  Existing Urban Area
-  Private Open Space RG
-  Public Open Space
-  Formed Public Trail
-  Informal Walking Track



**Figure 10. Cultural Context
NORTH THREE PARKS
Proposed Plan Change 4**



June 2010

for Paterson Pitts Wanaka
on behalf of
Ballantyne Investments Ltd and
Queenstown Lakes District Council



(Aerial Base supplied by Paterson Pitts June 2010)



June 2010
for Paterson Pitts Wanaka
on behalf of
Ballantyne Investments Ltd and Queenstown Lakes District Council

**Figure 11. Site Analysis
NORTH THREE PARKS
Proposed Plan Change 4**

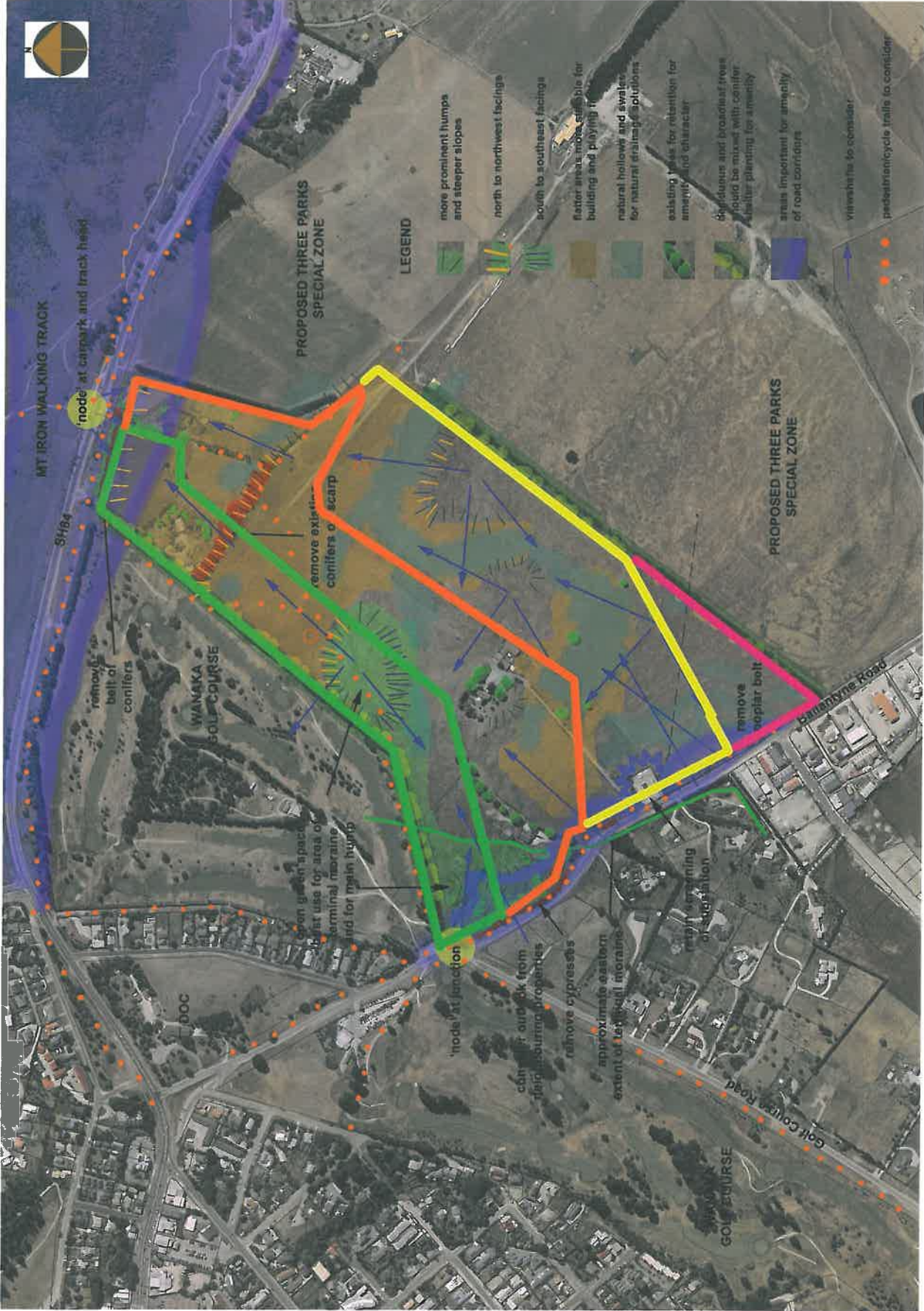


Figure 12. Site Analysis with Proposed Zoning Overlay NORTH THREE PARKS Proposed Plan Change 4

June 2010
 for Paterson Pitts Wanaka
 on behalf of
 Ballantyne Investments Ltd and Queenstown Lakes District Council



(Aerial Base supplied by Paterson Pitts June 2010)