

# Queenstown Lakes District School Speed Zone Reductions June 2021 – draft consultation material

## Public Notice

### Consultation on recommended new speed limit reductions around the district's schools in accordance with Speed Limits Bylaw 2019 | Kā Ture Pae Tere 2019

Queenstown Lakes District Council is inviting feedback on recommended permanent and variable speed limit reductions around thirteen schools within the district.

This follows the adoption of the Speed Limits Bylaw 2019, which enables Council to make permanent changes to speed limits following community consultation. The proposed changes were suggested by the community as part of Council's consultation on the bylaw in 2019.

It is proposed to reduce the speed limit to 30km/hr within school zones in the following locations.

- Arrowtown Primary School
- Glenorchy Primary School
- Kingsview Primary School
- Queenstown Primary School
- Remarkables Primary School
- St Joseph's School
- Shotover Primary School
- Wakatipu High School
- Holy Family School
- Mount Aspiring College
- Wānaka Primary
- Hāwea Flat School

It is proposed to reduce the speed limit to 40km/hr permanently in the following location.

- Makarora School

Specific details for each location can be found at [letstalk.qldc.govt.nz](http://letstalk.qldc.govt.nz)

Any person or organisation has a right to comment on the recommended speed limit reductions and the Council encourages everyone with an interest in the changes proposed for the Queenstown Lakes District to do so.

### Get informed:

Details of the recommended speed reductions are available at the following places:

- Online [letstalk.qldc.govt.nz](http://letstalk.qldc.govt.nz)
- At Council offices and libraries across the district

**How to make a submission:**

We value your input on the recommended speed limit reductions. Here's how to share your views:

- Complete the submission online form at [letstalk.qldc.govt.nz](http://letstalk.qldc.govt.nz)
- Email your feedback to [letstalk@qldc.govt.nz](mailto:letstalk@qldc.govt.nz)
- Post to Queenstown Lakes District Council, Private Bag 50072, Queenstown 9348.

Submissions close at 5.00pm, 16 July 2021.

Late submissions will only be accepted where exceptional circumstances apply. All submissions will be treated as public information.

*This notice is in accordance with the Local Government Act 2002.*

## Let's Talk page content

**We're proposing to introduce recommended permanent and variable speed limit reductions around 13 schools within the district.**

These changes were suggested by the community during consultation carried out on the Speed Limits Bylaw 2019, following a speed management review of the district.

### What's proposed?

It is proposed to reduce the speed limit to 30km/hr within school zones in the following locations:

School	Proposal	Signage
Arrowtown Primary School	Reduced to 30km/hr during school drop-off and pick-up	Existing Variable Message Sign (VMS) will create a strong visual clue to drivers in the area that they are approaching a school and need to slow down.
Glenorchy Primary School	Reduced to 30km/hr during school drop-off and pick-up	New VMS signs to be installed on Oban Street.
Kingsview Primary School	Reduced to 30km/hr during school drop-off and pick-up	Variable static 30km/hr speed limit installed on Yewlett Crescent and Lake Terrace.
Queenstown Primary School	Reduced to 30km/hr during school drop-off and pick-up	New VMS signs to be installed on Robins Road
Remarkables Primary School	Reduced to 30km/hr during school drop-off and pick-up	Install static variable 30km/hr school speed zones. This should be installed on McBride Street and Lake Avenue to form the school speed zone.
St Joseph's School	Reduced to 30km/hr during school drop-off and pick-up	The speed zone would encompass Hallenstein Street, Beetham Street and Melbourne Street.
Shotover Primary school	Reduced to 30km/hr during school drop-off and pick-up	Install a static variable 30km/hr school speed zone around Shotover Primary School.
Wakatipu High School	Reduced to 30km/hr during school drop-off and pick-up	Install a variable static 30km/hr speed limit for Red Oaks Drive.

Holy Family School	Reduced to 30km/hr during school drop-off and pick-up	New VMS signs to be installed on Aubrey Road.
Mount Aspiring College	Reduced to 30km/hr during school drop-off and pick-up	New VMS signs to be installed on Plantation Road.
Makarora School	Permanent reduction to 40km/hr	Two static 40 km/hr permanent speed zone signs be installed where Rata Road begins off State Highway 6.
Wānaka Primary	Reduced to 30km/hr during school drop-off and pick-up	Four static 30 km/hr variable school speed zone signs are installed, with two on Totara Terrace and two on Kings Drive
Hāwea Flat School	Reduced to 30km/hr and 60km/hr during school drop-off and pick-up	Three Variable Message Sign (VMS) 30km/hr school speed zone signs be installed, two on each of Camp Hill Road and one on St Ninians Way. A static sign would also be required on Partridge Road.  A 60km/hr rural school speed zone installed on Kane Road.

Check out the document library on the right hand side of this page for more detail about the speed management review process and 2019 Speed Limit Bylaw consultation.

### **Why reduce the speed limits around schools?**

Reducing speeds around schools make the streets safer, more attractive and more accessible for children to walk and cycle to school.

### **Have your say:**

Your feedback will assist Council in its decision making. Please complete the online form below by 16 July 2021.

## Submission form

### Your details:

Name:

Postal address:

Telephone number:

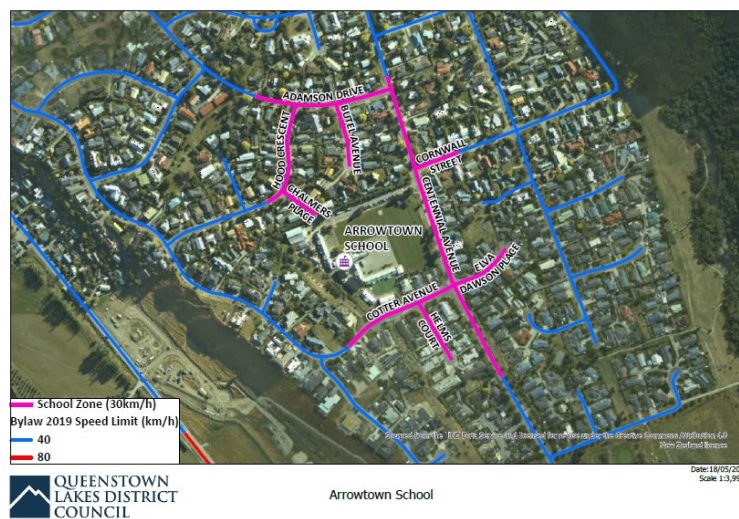
Email:

I understand that my submission is public information:

### Your feedback:

#### Arrowtown Primary School

It is recommended that the existing Variable Message Sign (VMS) signs installed on Centennial Avenue and Chalmers Place are changed to reflect a 30km/h school speed zone. The electronic signs will create a strong visual clue to drivers in the area that they need to slow down and also that they are approaching a school.



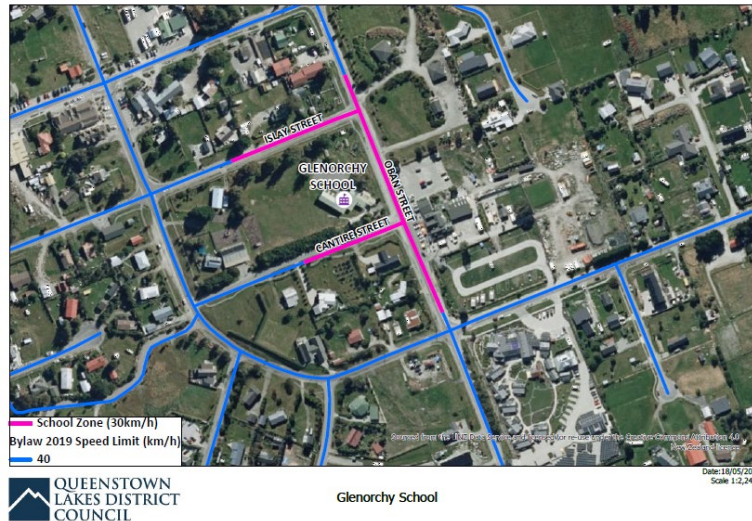
support/ not support

Comment/Why:

Any other comments

## Glenorchy Primary School

It is recommended that Variable Message Sign (VMS) signs be installed on Oban Street. Oban Street is the main street into Glenorchy and given the variety of road users that will be using this street a VMS sign is considered to be the most effective treatment.



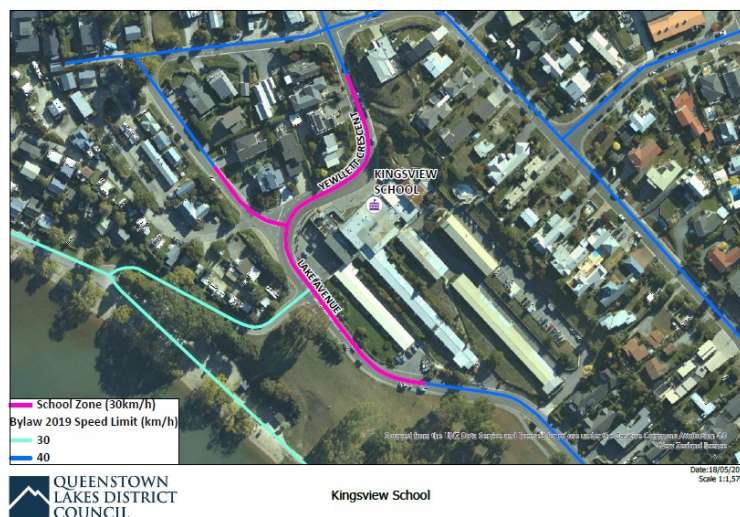
**support/ not support**

**Comment/Why:**

**Any other comments**

## Kingsview Primary School

It is recommended that a variable static 30km/h speed limit is installed for Yewlett Crescent and the section of Lake Terrace up to the entrance to number 4 Lake Terrace.



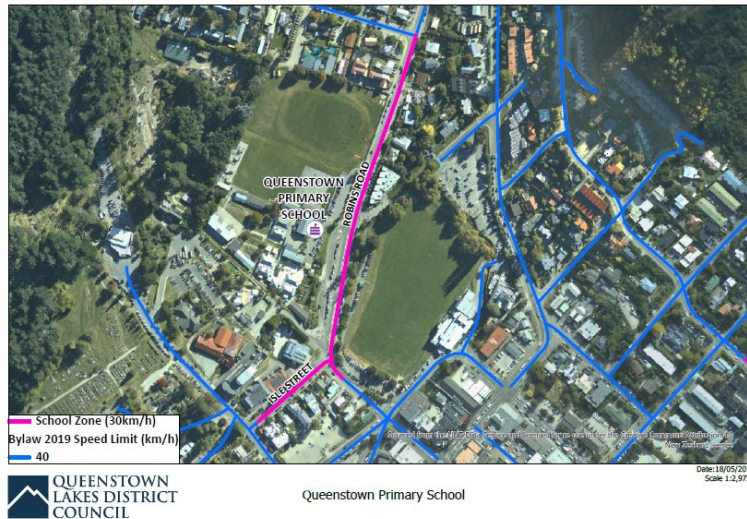
**support/ not support**

**Comment/Why:**

**Any other comments**

## Queenstown Primary School

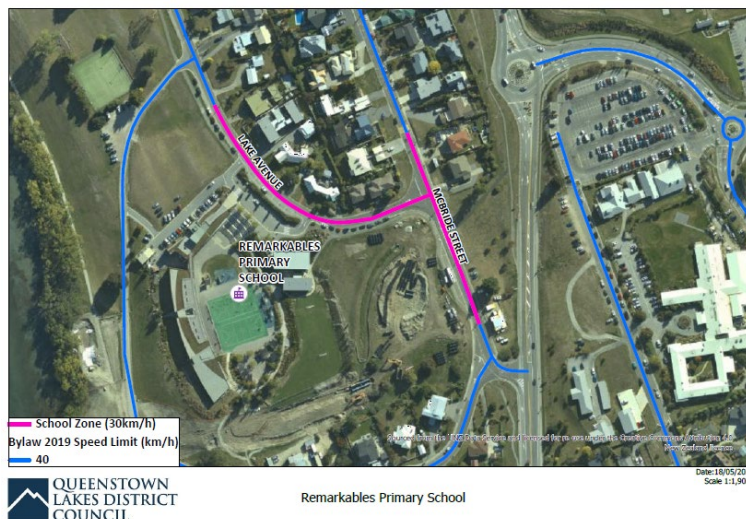
It is recommended to install two electronic 30km/h signs on Robins Road to legally define a 30km/h zone.



**support/ not support**  
**Comment/Why:**  
**Any other comments**

## Remarkables Primary School

It is recommended to install static variable 30km/h school speed zones. This should be installed on McBride Street and Lake Avenue to form the school speed zone.



**support/ not support**  
**Comment/Why:**  
**Any other comments**

## St Joseph's School

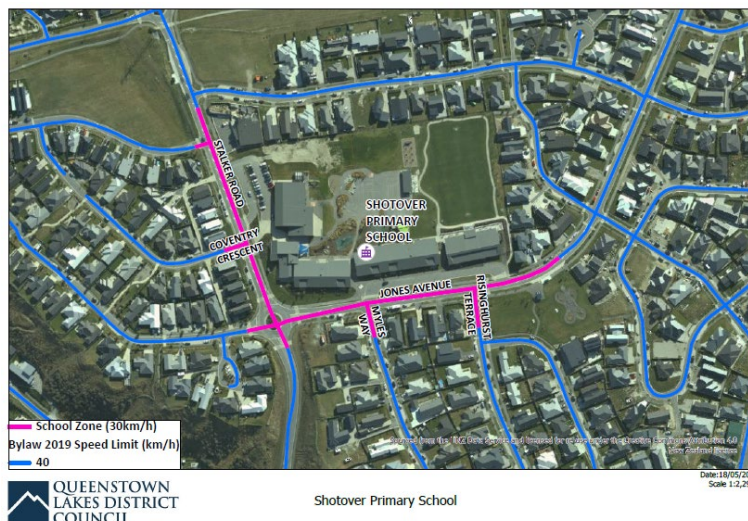
It is recommended that a 30km/h variable school zone is established around the school. The speed zone would encompass Hallenstein Street, Beetham Street and Melbourne Street.



**support/ not support**  
**Comment/Why:**  
**Any other comments**

## Shotover Primary School

It is recommended to install a static variable 30km/h school speed zone around Shotover Primary School. The existing speeds are low, even when it was a 50km/h posted speed limit. The speed limit has now changed to 40km/h. The signs will highlight to drivers that there is a school along the roads.

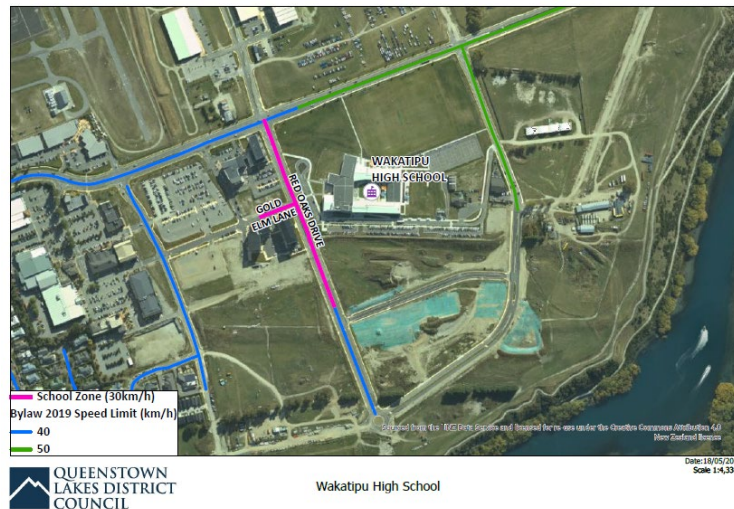


**support/ not support**  
**Comment/Why:**  
**Any other comments**



## Wakatipu High School

It is recommended that a variable static 30km/h speed limit is installed for Red Oaks Drive.



**support/ not support**

**Comment/Why:**

**Any other comments**

## Holy Family School

It is recommended that Variable Message Sign (VMS) Signs be installed on Aubrey Road. Aubrey Road is the through road which services many of the surrounding streets in the area. A VMS sign will be the most effective treatment because the school is hidden behind the church and not obvious to road users. A further VMS sign will be installed on Koromiko Crescent, and a static sign will be installed on Kings Drive.



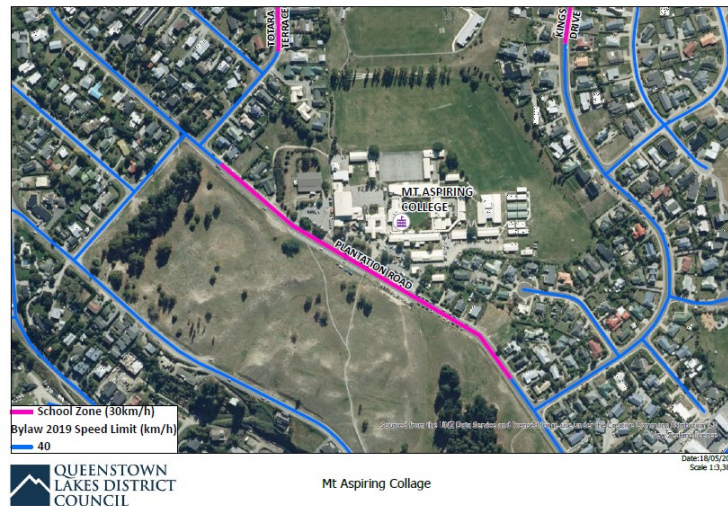
**support/ not support**

**Comment/Why:**

**Any other comments**

## Mount Aspiring College

Due to the high speeds along Plantation Road an electronic 30km/h school speed sign is recommended. The signs should be installed at the current locations.



**support/ not support**

**Comment/Why:**

**Any other comments**

## Makarora School

It is recommended that two static 40 km/h permanent speed zone signs be installed where Rata Road begins off State Highway 6. This will be a permanent speed reduction for the village, rather than a specific school reduction. This is why 40km/h is recommended to be consistent with other residential villages and towns in the district. The existing speeds are low, so this is just reinforcing the low speeds.



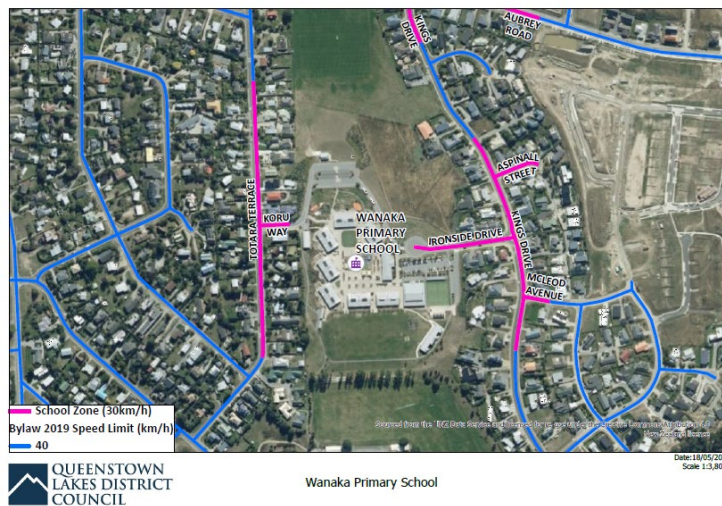
**support/ not support**

**Comment/Why:**

## Any other comments

### Wānaka Primary School

It is recommended that four static 30 km/h variable school speed zone signs are installed, with two on Totara Terrace and two on Kings Drive. Pedestrians use these entrances to the school and speeds near these intersections should be low. The static 30km/h variable signs will be a formal trail approved by NZTA.



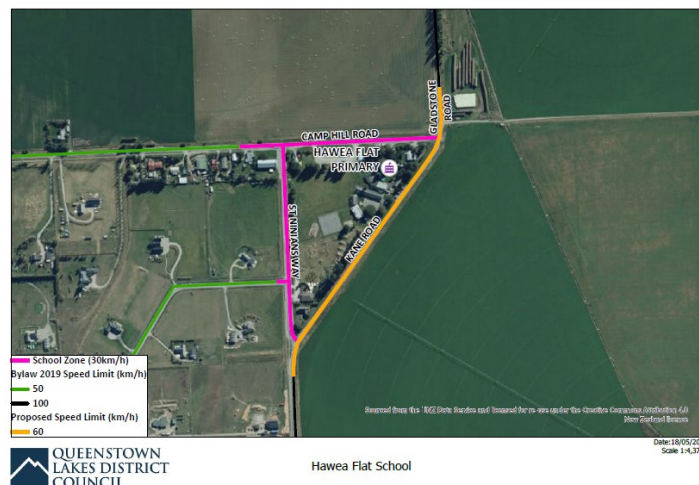
support/ not support

Comment/Why:

Any other comments

### Hāwea Flat School

It is recommended that three Variable Message Sign (VMS) 30km/h school speed zone signs be installed, two on each of Camp Hill Road and one on St Ninians Way. A static sign would also be required on Partridge Road. This would create a 30km/h school speed zone around the active frontages of the school. The speeds on Kane Road are too high to propose a 30km/h school speed zone. A 60km/h rural school speed zone should be considered for this area.



support/ not support

**Comment/Why:**  
**Any other comments**