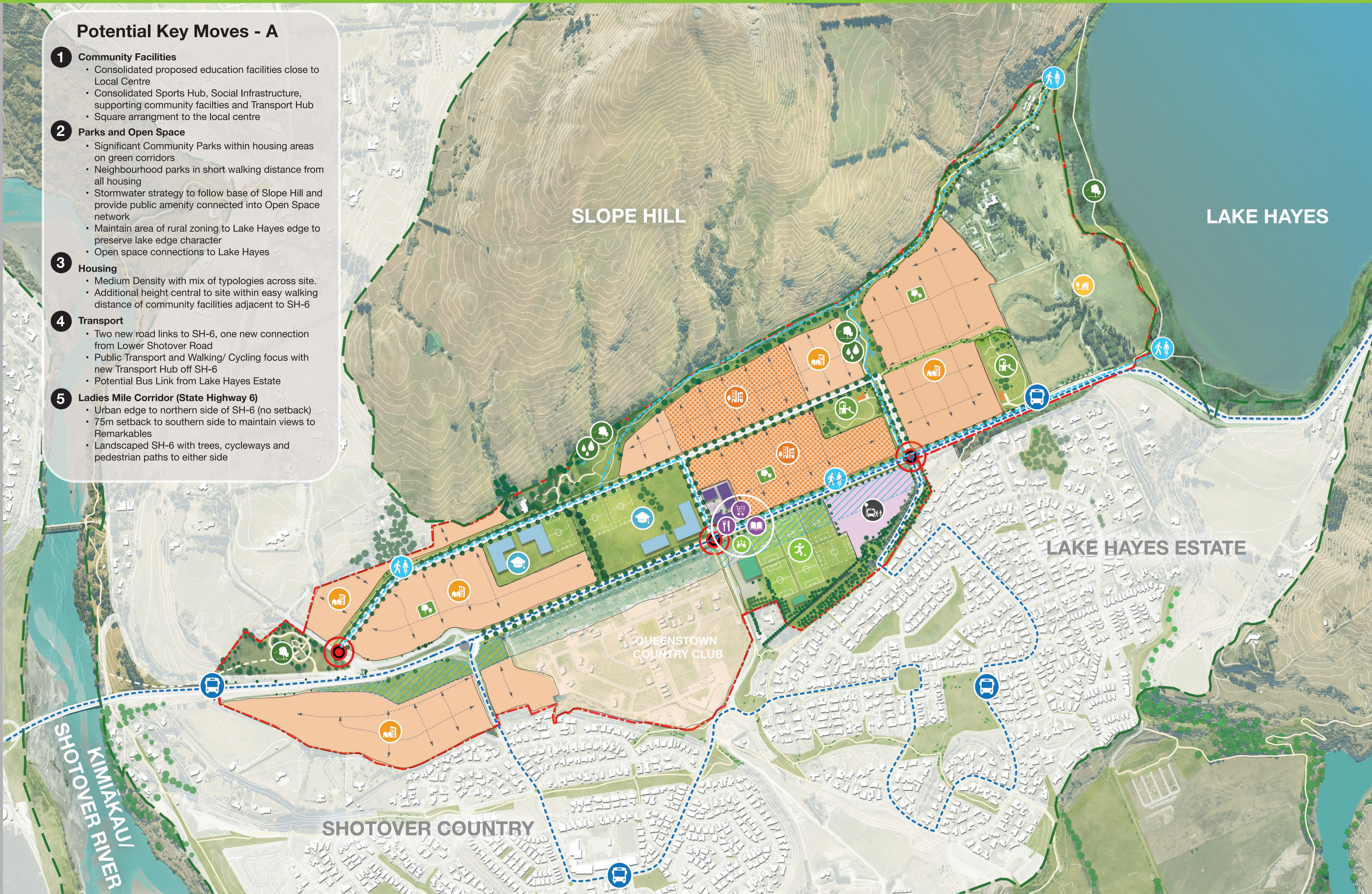


# Masterplan Diagram A

Help shape the future of Te Pūtahi: Ladies Mile

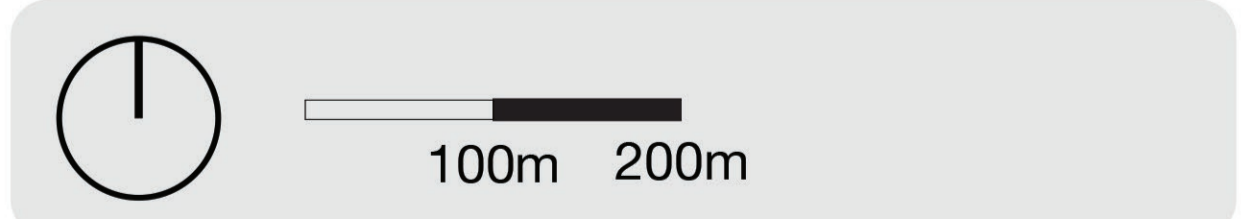
## Potential Key Moves - A

- 1 Community Facilities**
  - Consolidated proposed education facilities close to Local Centre
  - Consolidated Sports Hub, Social Infrastructure, supporting community facilities and Transport Hub
  - Square arrangement to the local centre
- 2 Parks and Open Space**
  - Significant Community Parks within housing areas on green corridors
  - Neighbourhood parks in short walking distance from all housing
  - Stormwater strategy to follow base of Slope Hill and provide public amenity connected into Open Space network
  - Maintain area of rural zoning to Lake Hayes edge to preserve lake edge character
  - Open space connections to Lake Hayes
- 3 Housing**
  - Medium Density with mix of typologies across site.
  - Additional height central to site within easy walking distance of community facilities adjacent to SH-6
- 4 Transport**
  - Two new road links to SH-6, one new connection from Lower Shotover Road
  - Public Transport and Walking/ Cycling focus with new Transport Hub off SH-6
  - Potential Bus Link from Lake Hayes Estate
- 5 Ladies Mile Corridor (State Highway 6)**
  - Urban edge to northern side of SH-6 (no setback)
  - 75m setback to southern side to maintain views to Remarkables
  - Landscaped SH-6 with trees, cycleways and pedestrian paths to either side



### Key:

- Connected Bus Network
- Transport Hub
- Rural Lifestyle
- Medium / High Density Residential
- Additional Height Medium / High Density Residential
- Walking/Cycling Trails connecting with existing neighbourhood trails
- Proposed Education Facilities (Not endorsed by M.O.E.)
- Community Park
- Local Park
- Reserve Open Space & Stormwater Management
- Sports Hub, Community Hall + Supporting Community Facilities
- Local Centre/ Commercial Hub
- Intersection (New)
- Existing / Modified Intersection
- Outstanding Natural Feature
- Build Restriction Setbacks



Read more details about the project at [www.qldc.govt.nz/ladies-mile-masterplan](http://www.qldc.govt.nz/ladies-mile-masterplan)