

QUEENSTOWN LAKES DISTRICT COUNCIL

WĀNAKA LAKEFRONT DEVELOPMENT PLAN

- TE ARA WĀNAKA STAGE 2 -

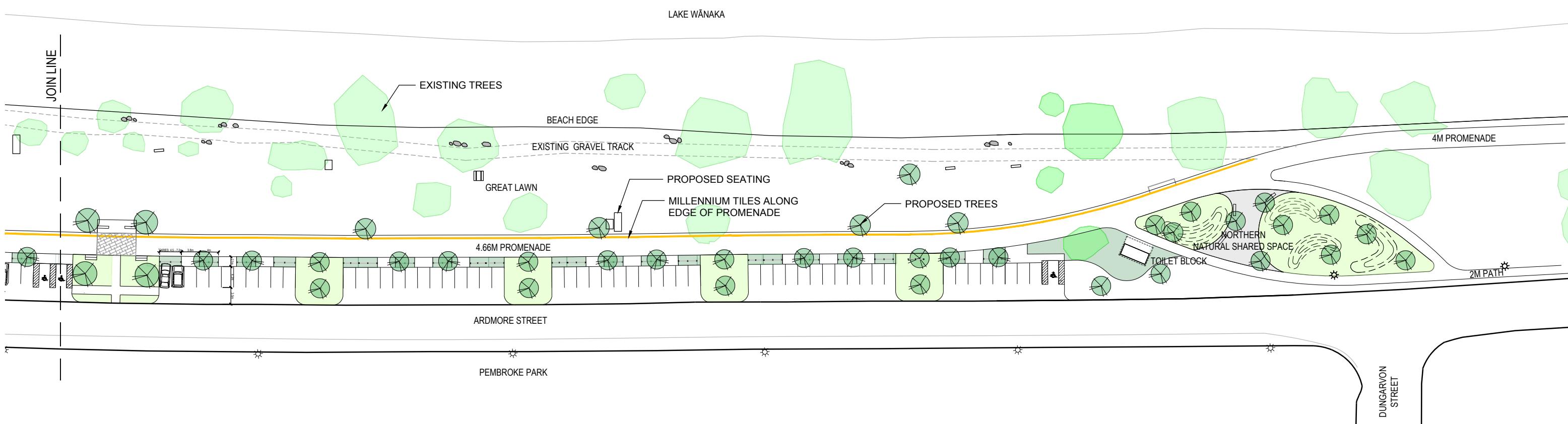


LANDSCAPE DEVELOPED DESIGN

DATE: 17/11/2020

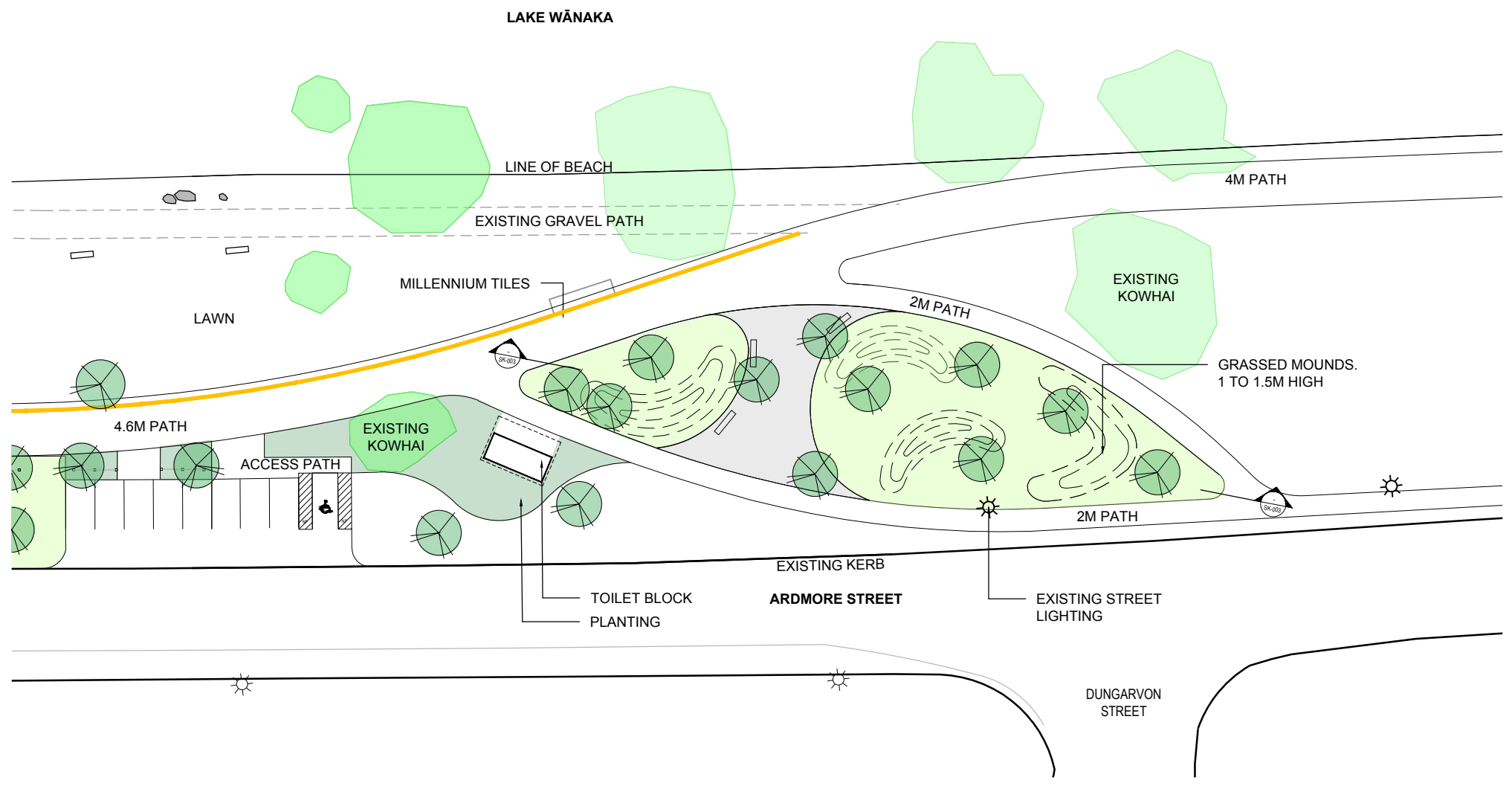


PLAN 1: SOUTHERN END

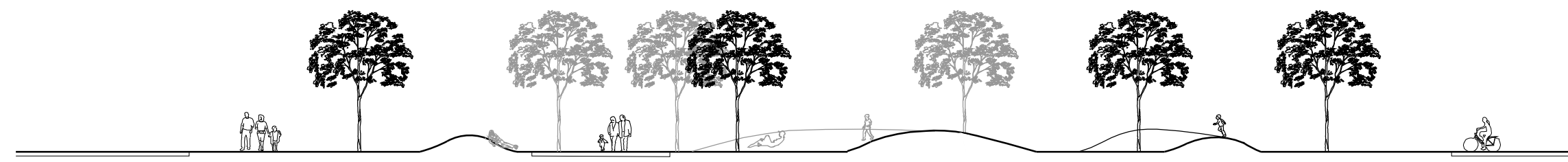


PLAN 2: NORTHERN END





PLAN 1:500



SECTIONAL ELEVATION 1:250

- CONSIDERATIONS**
- A MORE INTERACTIVE SPACE FOR SITTING AND LOUNGING.
 - NO PLANTING
 - OVERALL SIZE OF GARDEN REDUCED TO TIE IN WITH SOUTHERN GARDEN AND REDUCE COSTS
 - INCLUDES FOUR CUBICLE TOILET
 - NEED TO MAINTAIN EXISTING STREET LIGHTS AND TREES - REDUCED WIDTH OF PATH RUNNING PARALLEL TO ARDMORE STREET





ALLUVIAL PLAINS



DAYLIGHTED CREEK



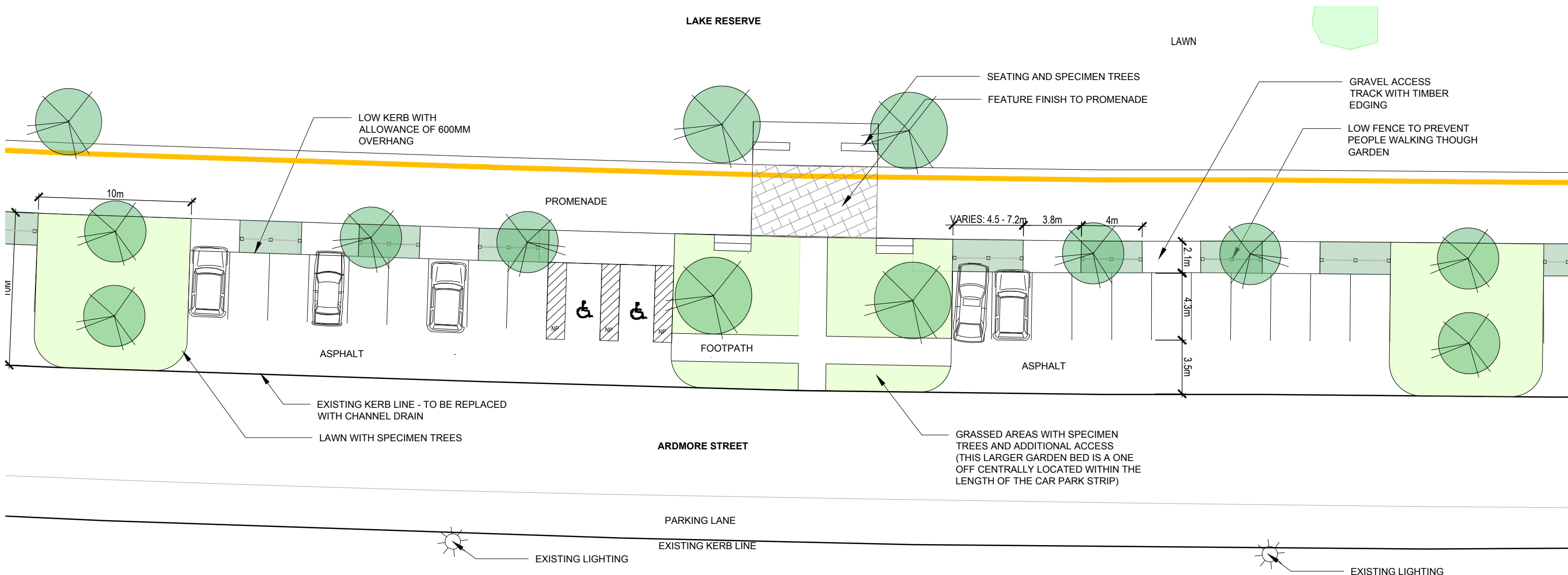
GRASSED MOUNDS



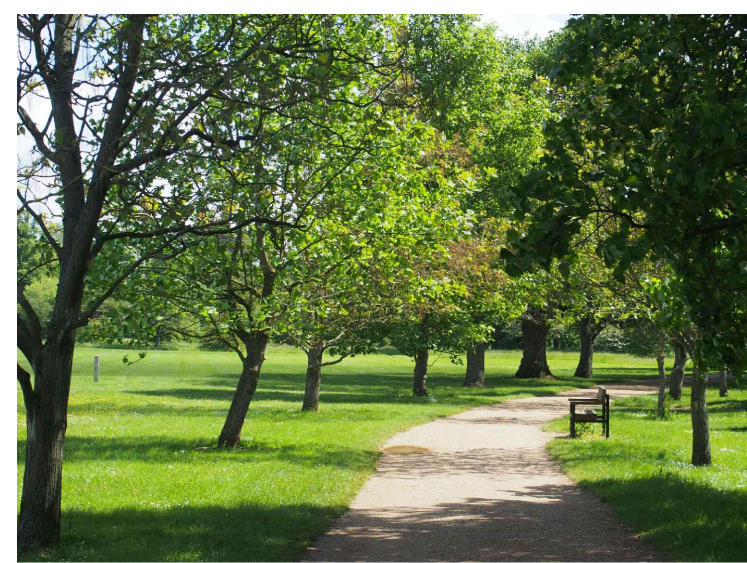
INFORMAL PLAY ITEMS



ARTIFICIAL TURF



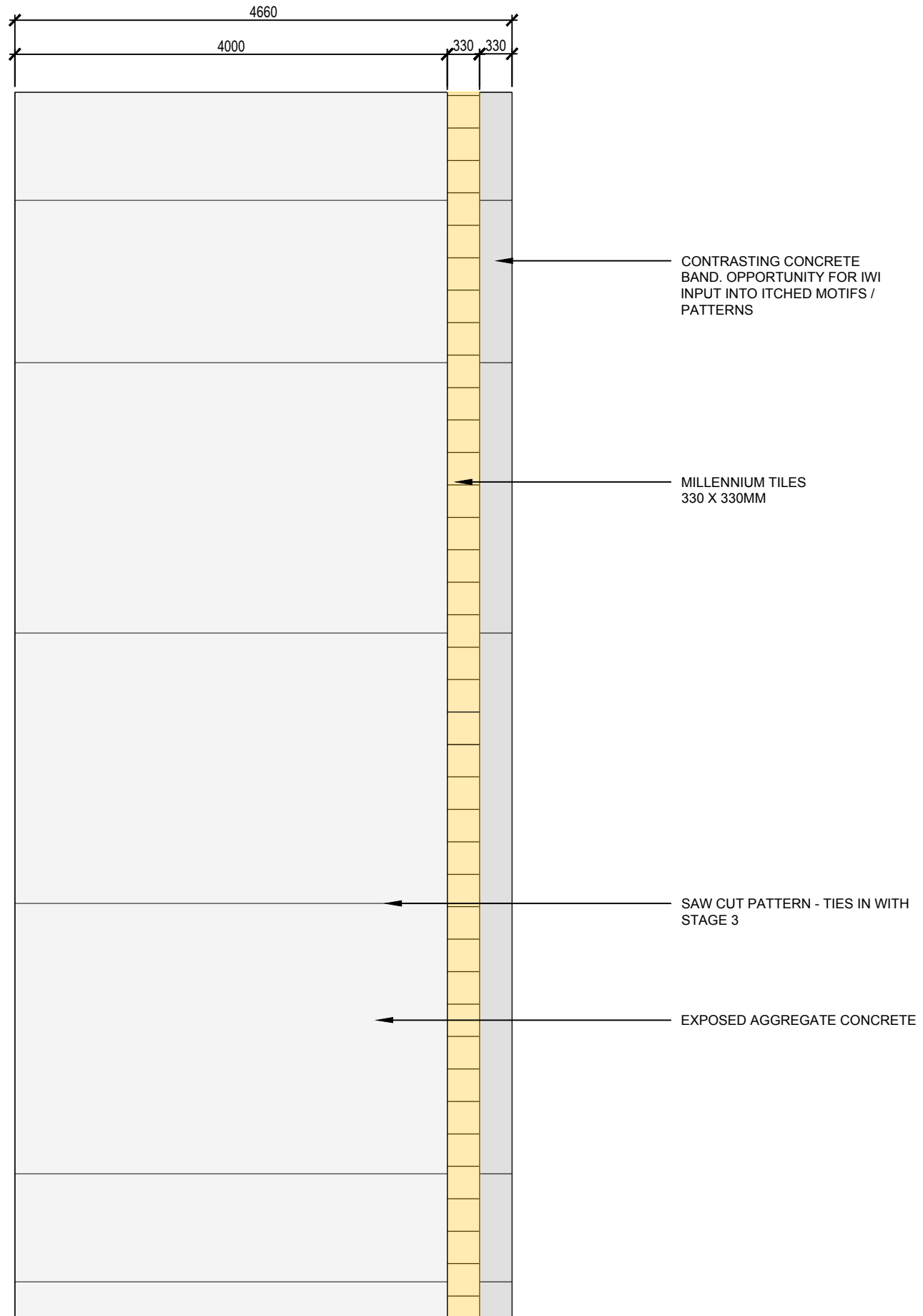
NOTE:
CAR PARK SPACING AND KERBING INTERFACE
IS INDICATIVE ONLY



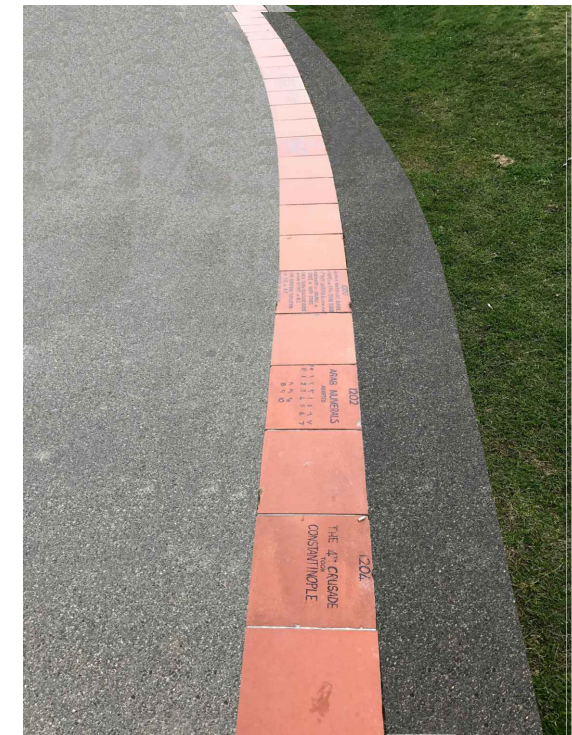
SMALL (APPROX. 5M) TREE SPECIES ALONG LENGTH OF PROMENADE



BARRIER: POST AND RAIL OPTION



EXISTING EDGE TREATMENT



PROPOSED EDGE TREATMENT



CULTURAL MARKINGS TO EDGE STRIP

LAYOUT 1:50