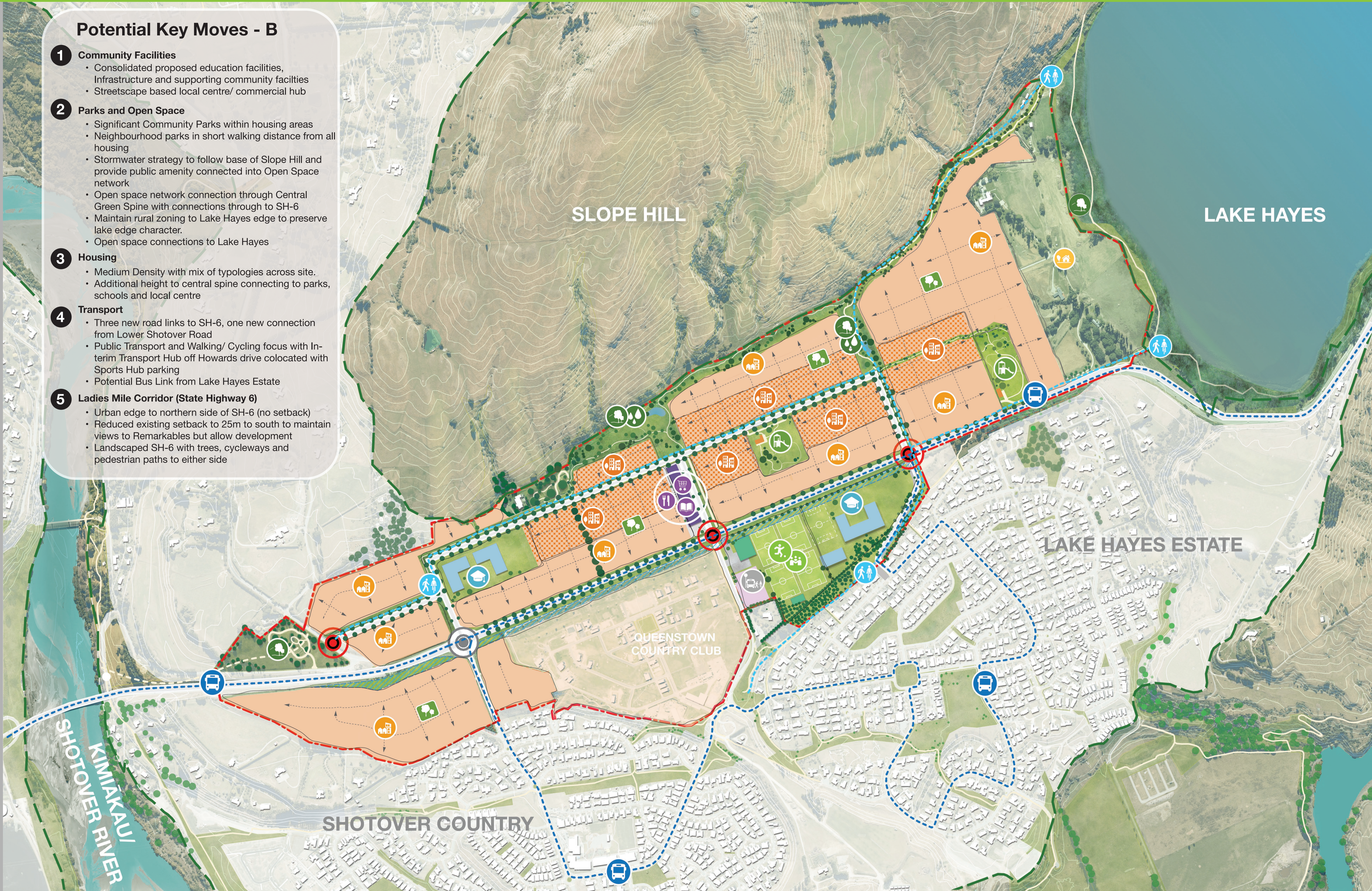


Masterplan Diagram B

Help shape the future of Te Pūhahi: Ladies Mile

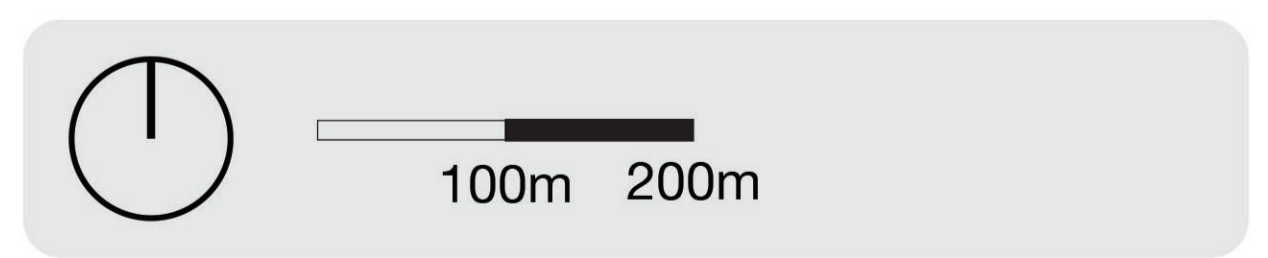
Potential Key Moves - B

- 1 Community Facilities**
 - Consolidated proposed education facilities, Infrastructure and supporting community facilities
 - Streetscape based local centre/ commercial hub
- 2 Parks and Open Space**
 - Significant Community Parks within housing areas
 - Neighbourhood parks in short walking distance from all housing
 - Stormwater strategy to follow base of Slope Hill and provide public amenity connected into Open Space network
 - Open space network connection through Central Green Spine with connections through to SH-6
 - Maintain rural zoning to Lake Hayes edge to preserve lake edge character.
 - Open space connections to Lake Hayes
- 3 Housing**
 - Medium Density with mix of typologies across site.
 - Additional height to central spine connecting to parks, schools and local centre
- 4 Transport**
 - Three new road links to SH-6, one new connection from Lower Shotover Road
 - Public Transport and Walking/ Cycling focus with Interim Transport Hub off Howards drive colocated with Sports Hub parking
 - Potential Bus Link from Lake Hayes Estate
- 5 Ladies Mile Corridor (State Highway 6)**
 - Urban edge to northern side of SH-6 (no setback)
 - Reduced existing setback to 25m to south to maintain views to Remarkables but allow development
 - Landscaped SH-6 with trees, cycleways and pedestrian paths to either side



Key:

- Connected Bus Network
- Interim Transport Hub
- Rural Lifestyle
- Medium / High Density Residential
- Additional Height Medium / High Density Residential
- Walking/Cycling Trails connecting with existing neighbourhood trails
- Proposed Education Facilities (Not endorsed by M.O.E.)
- Community Park
- Local Park
- Reserve Open Space & Stormwater Management
- Sports Hub, Community Hall + Supporting Community Facilities
- Local Centre/ Commercial Hub
- Intersection (New)
- Existing / Modified Intersection
- Outstanding Natural Feature
- Build Restriction Setbacks



Read more details about the project at www.qldc.govt.nz/ladies-mile-masterplan

