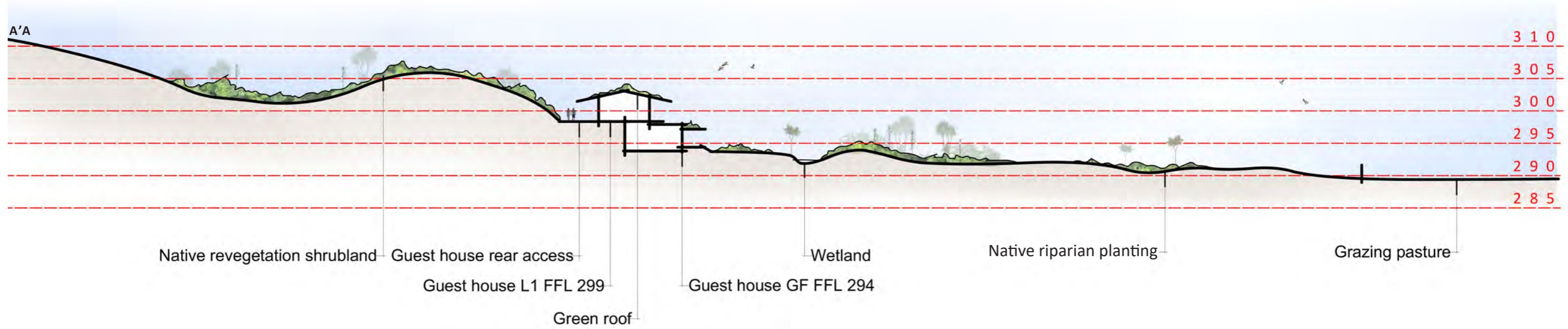




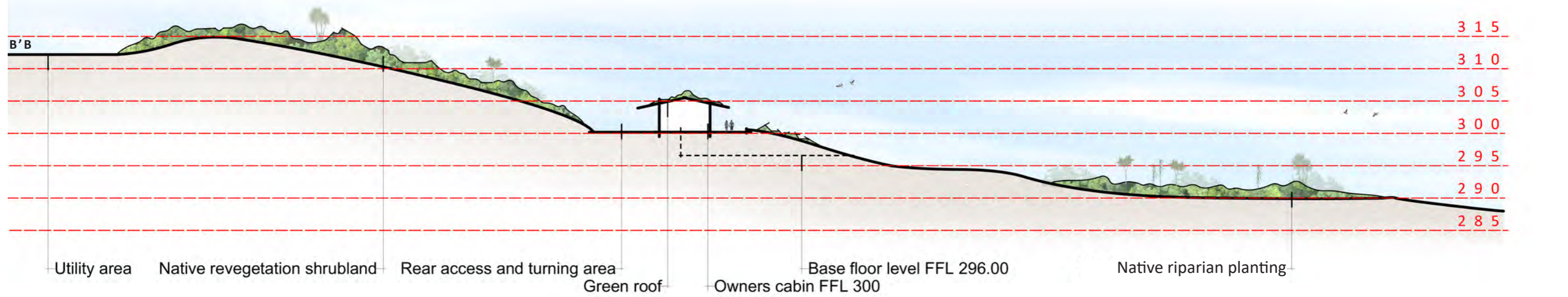




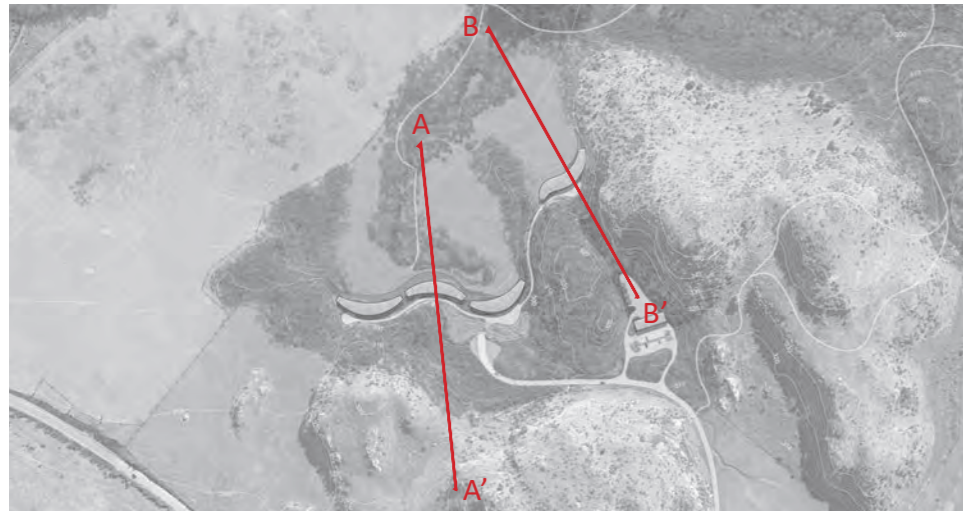
SECTION A: THROUGH GUEST ACCOMMODATION (POD B)
1:600



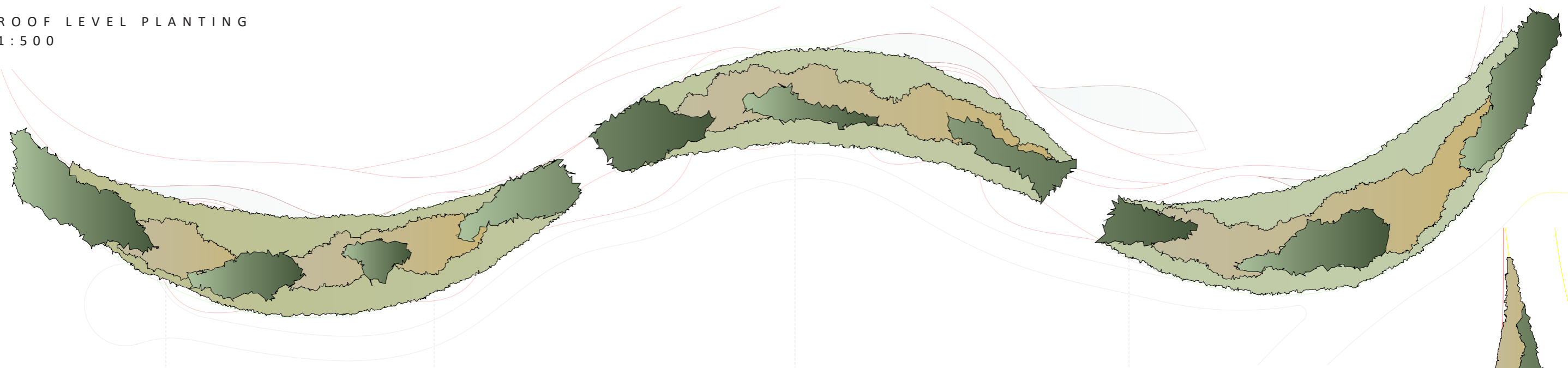
SECTION B: THROUGH PRIVATE DWELLING (POD D)
1:600



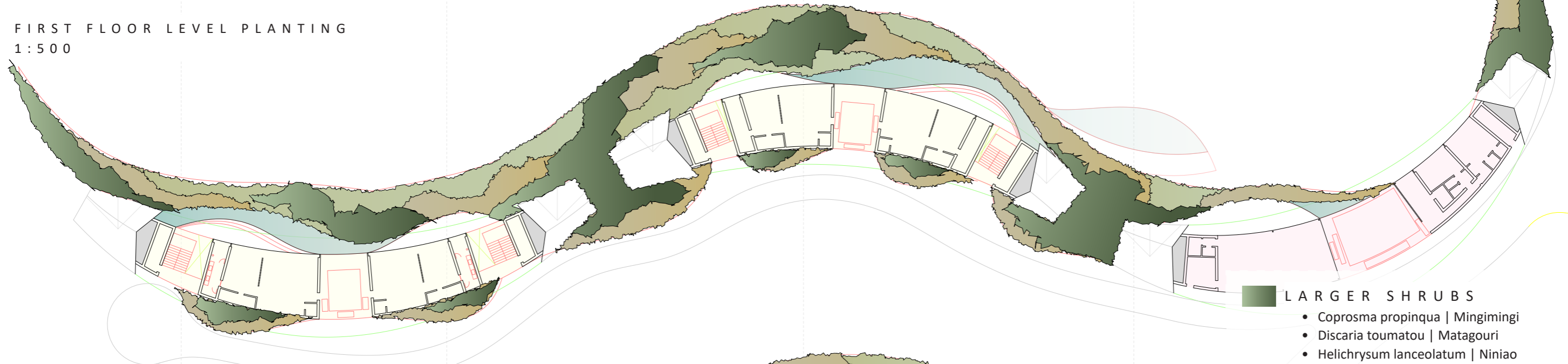
SECTION LOCATION PLAN (NOT TO SCALE)



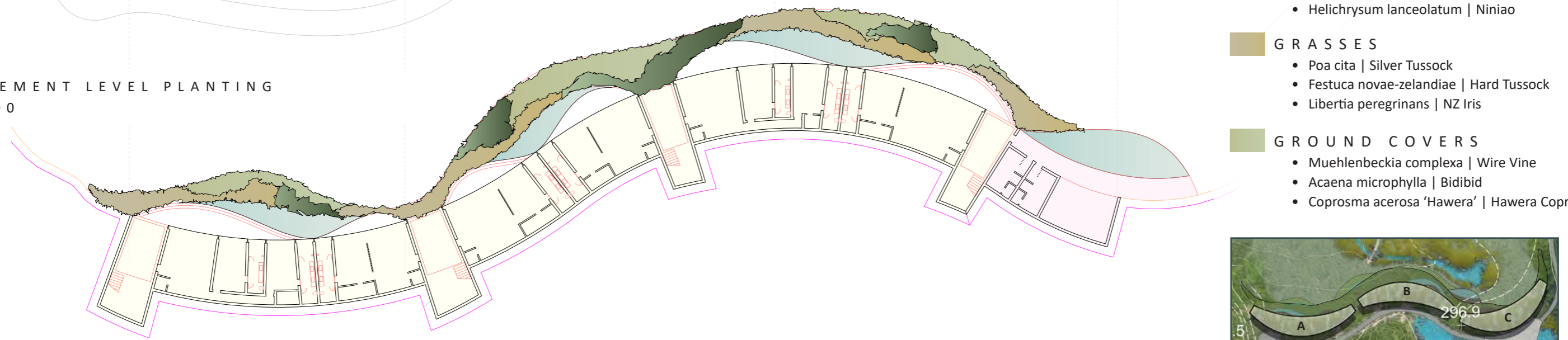
ROOF LEVEL PLANTING
1:500



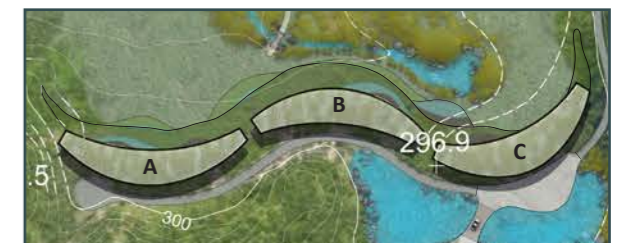
FIRST FLOOR LEVEL PLANTING
1:500



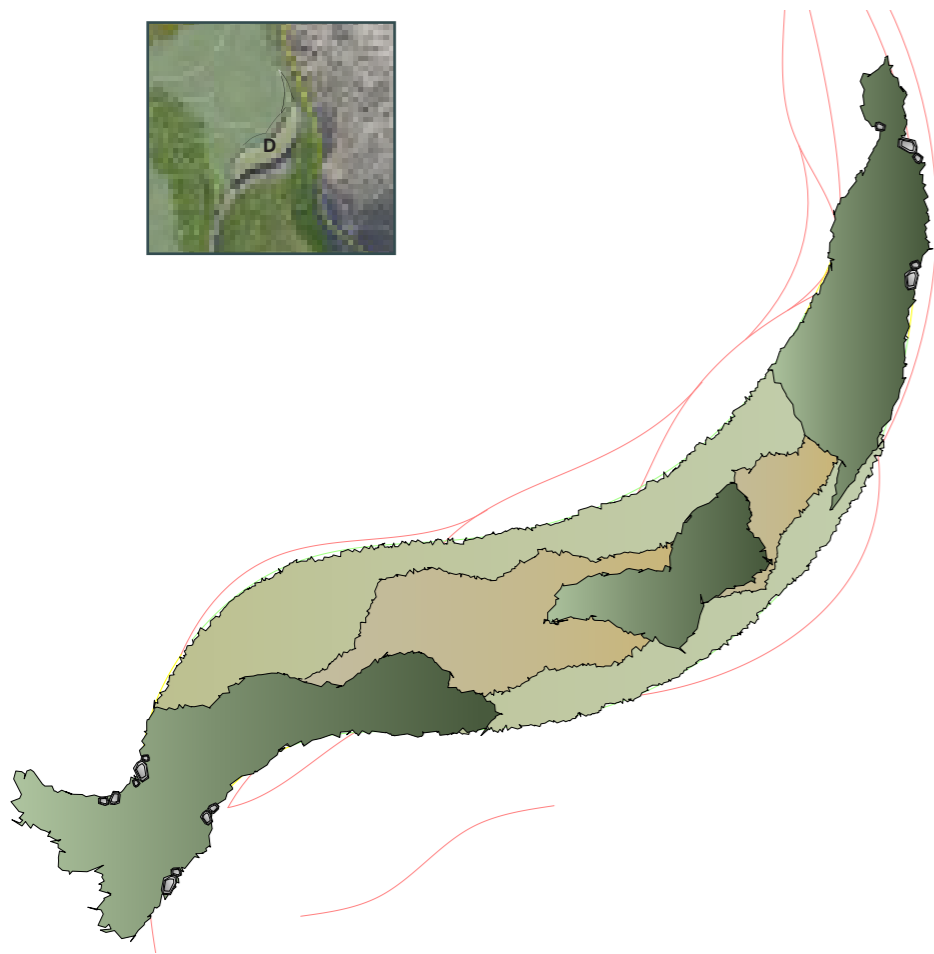
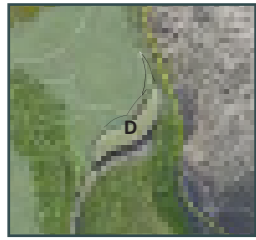
BASEMENT LEVEL PLANTING
1:500



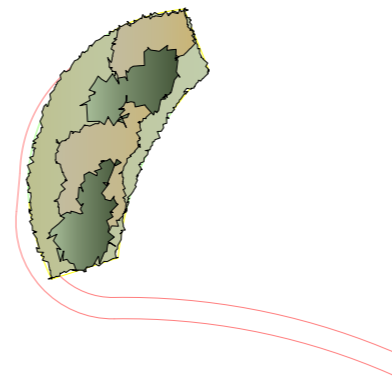
- LARGER SHRUBS**
- Coprosma propinqua | Mingimingi
 - Discaria toumatou | Matagouri
 - Helichrysum lanceolatum | Niniao
- GRASSES**
- Poa cita | Silver Tussock
 - Festuca novae-zelandiae | Hard Tussock
 - Libertia peregrinans | NZ Iris
- GROUND COVERS**
- Muehlenbeckia complexa | Wire Vine
 - Acaena microphylla | Bidibid
 - Coprosma acerosa 'Hawera' | Hawera Coprosma



OWNERS CABIN (POD D)
ROOF LEVEL PLANTING
1:500



MEDITATION AREA (POD M)
ROOF LEVEL PLANTING
1:500



- LARGER SHRUBS**
 - Coprosma propinqua | Mingimingi
 - Discaria toumatou | Matagouri
 - Helichrysum lanceolatum | Niniao
- GRASSES**
 - Poa cita | Silver Tussock
 - Festuca novae-zelandiae | Hard Tussock
 - Libertia peregrinans | NZ Iris
- GROUND COVERS**
 - Muehlenbeckia complexa | Wire Vine
 - Acaena microphylla | Bidibid
 - Coprosma acerosa 'Hawera' | Hawera Coprosma





- 1 Phormium tenax | Harakeke
- 2 Libertia ixioides | NZ Iris
- 3 Phormium cookianum | Mountain Flax
- 4 Cordyline australis | Cabbage Tree
- 5 Austroderia richardii
- 6 Apodasmia similis | Oioi
- 7 Carex secta | Pukio





- 1 *Sophora micophylla* | South Island Kowhai
- 2 *Chionochloa rubra* | Red Tussock
- 3 *Poa cita* | Silver Tussock
- 4 *Olearia paniculata* | Tree Daisy
- 5 *Griselinia littoralis* | Broadleaf
- 6 *Carmichaelia petriei* | Native Boom
- 7 *Pteridium esculentum* | Bracken Fern
- 8 *Plagianthus regius* | Ribbonwood
- 9 *Hebe salicifolia* | Koromiko
- 10 *Coprosma propinqua* | Mingimingi
- 11 *Discaria toumatou* | Matagouri

