

Imagine it's 2048, what legacy would you like to leave for future generations in Te Kirikiri / Frankton?

Te Kirikiri is a significant area for Kāi Tahu, known as a place of settlement and mahika kai, and lying at the junction of traditional trails linking to the wider landscape. Frankton has changed a lot in recent years. From rural land and holiday cribs into a complex mix of activities for locals and visitors, with much more to come. It's a dynamic place, but lacks a cohesive plan to bind Frankton's emerging community together.

Until now.

Following intensive community and stakeholder engagement spanning almost a year, we have collaboratively produced a draft Masterplan to show how land use and transport could be well integrated to address the future needs of Frankton.

We invite you to check out the draft plan on the next page and consider the actions being proposed with an open mind to the future. Then complete the feedback form and let us know if you think we've got it right or if there's anything missing. Feedback closes on 18 July.

The story so far

In late 2018, Wakatipu Way to Go, a partnership between QLDC, NZTA and ORC, decided to consider Frankton as a whole and establish a framework to join it all up.

**Share your views on the
Frankton Masterplan –
head to [letstalk.qldc.govt.nz/
frankton-masterplan](https://letstalk.qldc.govt.nz/frankton-masterplan)**

Building on the *Your Place, Your Plan* early insights engagement undertaken in September last year, the partnership embarked on a process to develop the Frankton Masterplan and Integrated Transport Programme Business Case.

The project's goals are to:

- > Ensure Frankton remains liveable and a positive experience for visitors, residents and businesses.
- > Integrate all plans, strategies and projects to create better outcomes for Frankton.
- > Give Local and Regional Government, Central Government and private stakeholders confidence to invest.

Establishing agreed outcomes for Frankton:

Together with Treaty partner Kai Tahu and stakeholders, we established key outcomes for the masterplan and came to you in April this year to seek community feedback through question and answer sessions, market day stalls and an online survey. The outcomes you agreed were important included:

- > Enhancing Frankton's role as a hub for the district,
- > Integrating with the lakefront and rivers edges,
- > Living and growing in harmony with nature,
- > Unified and integrated town and local centres,
- > Enhancing the local networks,
- > Nurturing inclusive neighbourhoods, and
- > Enhancing Kai Tahu visibility in the urban environment.

A vision for the future:

"Te Kirikiri Frankton, where our pathways, the lake and the rivers meet"

"At the heart of Te Kirikiri, Frankton is a hub that connects a bustling community of businesses, residents and visitors to Queenstown and the region. Embracing sustainable development, future generations live in harmony with the natural environment."

Where have we landed – A Draft Masterplan

Since community engagement in April, we've been working on weaving these preferred outcomes into a draft Masterplan to share with you. This is underpinned by a range of achievable land use and transport actions and sets out how Frankton might look by 2048. We can't achieve all of these things at once - they'll need to be staged over a 30-year timeframe in collaboration with our Wakatipu Way to Go partners and a joint community effort.

Ten key actions proposed in the draft Masterplan include:

1. Improving the arrival experiences into Queenstown via the airport, state highway and trail network, including the establishment of a new Airport-Wakatipu Lake Link and recognising wāhi tūpuna (ancestral landscapes) at the Shotover and Kawarau River crossings;
2. Upgrading State Highway 6 into a high amenity, 50 km/hr urban arterial, recognising the Ara Tawhito (Traditional Trail route) along Frankton Ladies Mile Highway and improving intersections to reduce community severance and improve safety along active travel routes;
3. Using a range of transport options to improve access for people of all ages and abilities. This includes completion of the wider active travel network and linking several local and district centres together through a high frequency, high capacity public transport operating on an orbital loop;

4. Strengthening the relationship between high capacity public transport corridors and more intensive land use activities and built form, such as redeveloping the northern Glenda Drive industrial area for residential living;
5. Integrating the airport terminal and other landside operations into the public transport network and surrounding compatible land uses, including investigating opportunities for the long-term relocation of Lakes District Hospital facilities outside the airport noise contours;
6. Enhancing recreational and community facilities at Queenstown Event Centre, alongside a new transport interchange and Emergency Precinct (e.g. emergency services, civil defence and airport rescue) on the Frankton Golf Course site;
7. Providing more urban parks and greener streets, including creating more direct visual and physical links to Lake Wakatipu and enhanced waterfront parks and reserves with our very own 'Frankton Gardens'.
8. Redeveloping Shotover Delta into a district-wide reserve for informal recreational activities, mahinga kai (food and resource harvesting areas) and potentially a relocated Frankton Golf Course;
9. Shifting current rural infrastructure towards the edge of Frankton to reduce current constraints (e.g. buffers from highways and transmission line corridors) and better accommodate future urban development; and
10. Expressing cultural values, narratives and heritage of Frankton from the perspective of Ngāi Tahu, Chinese, mining and pastoral farming, including creation of the Arranmore / McBride Farm Heritage Precinct.

Share your views on the Frankton Masterplan – head to letstalk.qldc.govt.nz/frankton-masterplan or get details at the Council office, Queenstown Events Centre or libraries.

Next steps

Your feedback will help to inform the completion of the masterplan and business case, before it is finalised and endorsed by the Wakatipu Way to Go partners for the next stage of the business case process and implementation.

To read more background about the Frankton Masterplan head to www.qldc.govt.nz/frankton-masterplan

Te Kirikiri / Frankton

Draft masterplan (2048)

Key

--- Masterplan area

Movement network

- Public transport route / stops (separated lanes or priority)
- Orbital bus route / stops
- Gondola lines / base station (private)
- Ferry route / stops
- Street network
- Active travel network (walking and cycling)
- New road corridor
- Freight route
- Bridge crossing (Active travel and / or public transport)
- 400m (5min) walking distance
- PR Park and Ride

Note: Dashed routes subject to further investigation

Constraints

- Airport noise contours (existing)
- ... Transmission lines

Land Use

- Higher density residential
- Medium density residential
- Lower density residential
- Mixed use (includes residential)
- Small to medium format retail
- Large format retail
- Commercial (excludes residential)
- Light industrial and utilities
- Community facilities (buildings)
- Queenstown Airport Corporation (subject to separate process)
- Active open space
- QEC Recreation Masterplan area (subject to separate process)
- Passive open space
- Urban park (location and size subject to levels of service)
- Native revegetation
- Tussockland / wetland

Note: Land use mix assumes removal of crosswind runway

20 Key features

- 01 Frankton Campground redevelopment
- 02 Emergency precinct
- 03 Events centre extension
- 04 Public transport interchange (estimated location)
- 05 Community hub
- 06 Arranmore/McBride Farm heritage precinct
- 07 Wastewater treatment plant expansion
- 08 Transmission line substation
- 09 Resource recovery centre
- 10 Wastewater ground filtration
- 11 Mahika Kai wetland areas
- 12 Proposed golf course
- 13 Commercial recreation expansion
- 14 Conference and arts centre
- 15 Quayside waterfront and jetty
- 16 Frankton Gardens
- 17 Regional coach hub
- 18 Humphrey St extension
- 19 Lakes District Hospital (long-term relocation)
- 20 Airport-lake link bridge



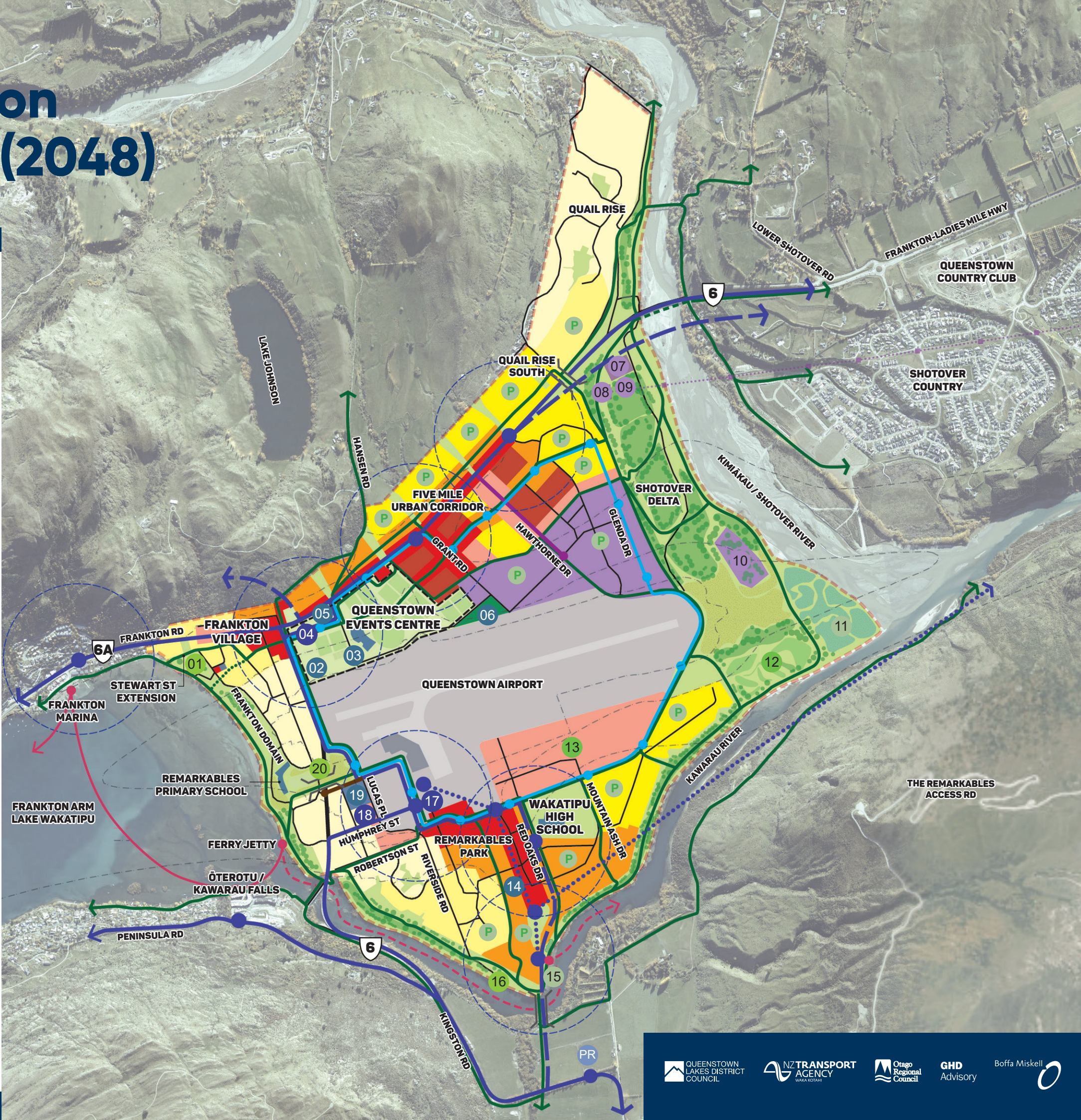
WAKATIPU
WAY TO GO



FRANKTON
YOUR PLACE YOUR PLAN



0 600m





Artists impression

Queenstown Airport to Lake Wakatipu Link

(view west from near the airport terminal) will provide a strong visual and active travel connection over State Highway 6 for locals and visitors, reducing the severance between Frankton Flats (e.g. airport, Remarkables Park Town Centre and Wakatipu High School) with the Frankton Arm (e.g. Ferry services, Remarkables Primary School and Frankton Beach).



Artists impression

Five Mile Urban Corridor

(view west along State Highway 6 near Grants Road intersection towards the Queenstown Event Centre) will upgrade the Frankton-Ladies Mile Highway, between the Shotover Bridge and Frankton Village, to create a high amenity, 50 km/hr urban arterial, recognising the Ara Tawhito (Traditional Trail) along this route. This will be integrated with masterplanned improvements to QEC, including maintaining views across Frankton Flats to the wider natural landscapes.