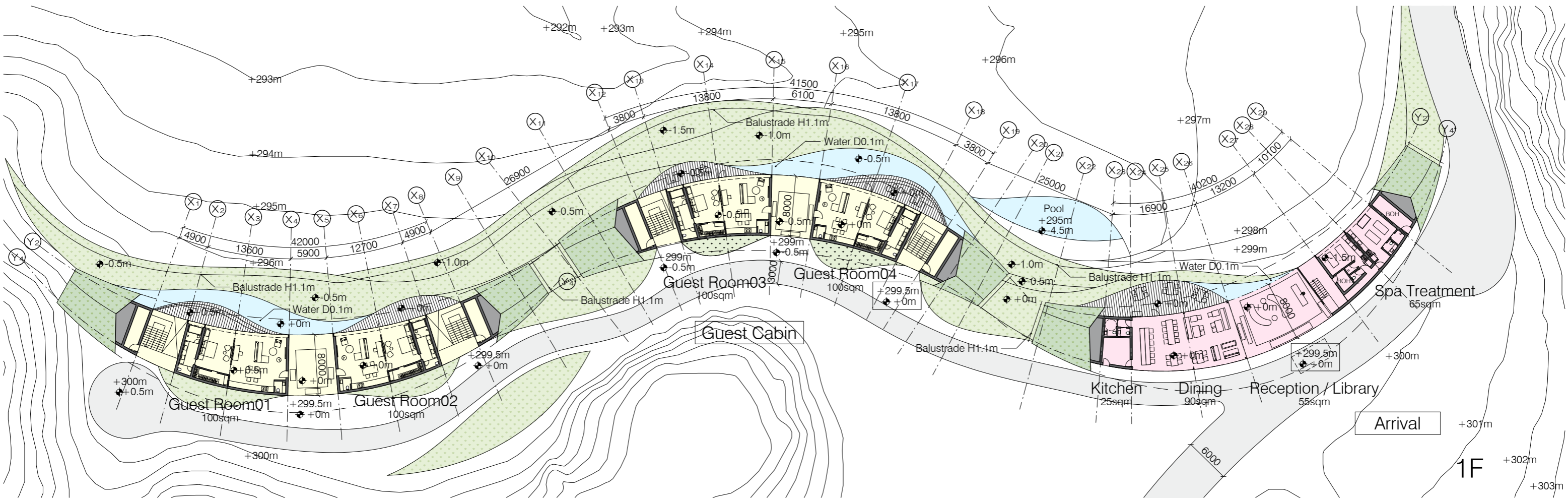
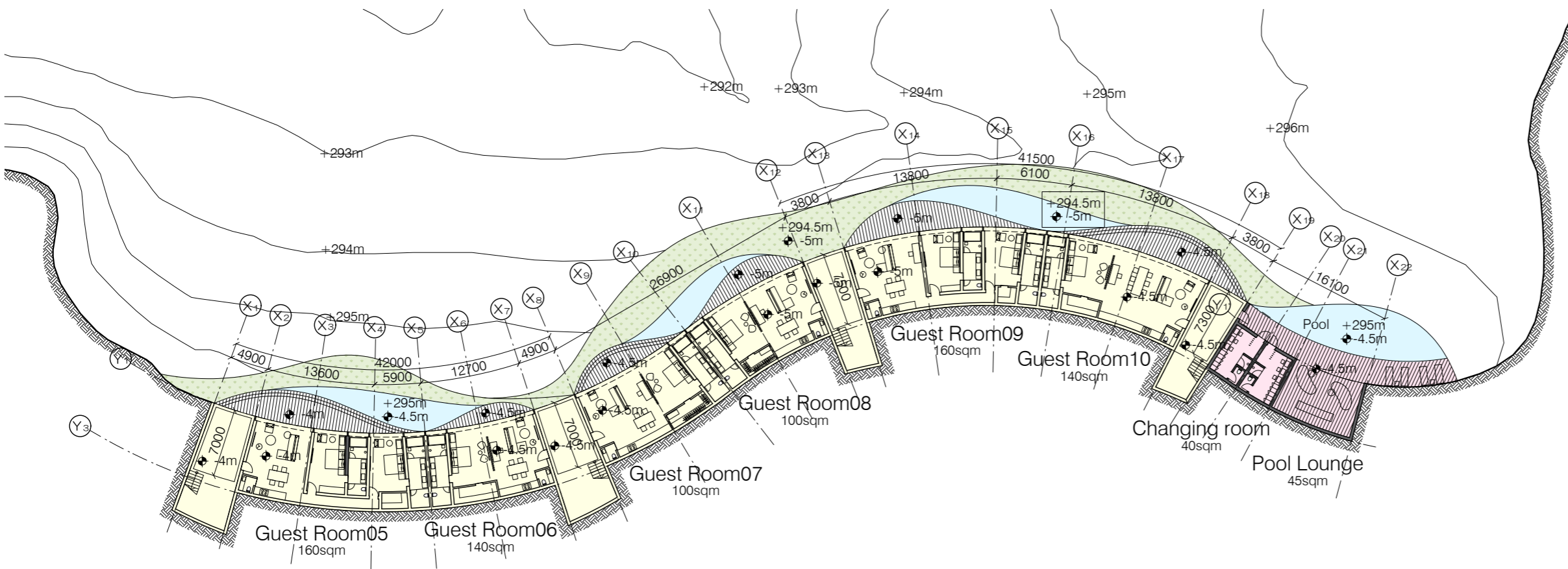


Detailed Site Plan 1F 1:1500



Arrival / Guest Cabin
1F

Unit Number	GFA
Reception / Library	90
Dining	90
Spa treatment	65
Arrival BOH	40
1 Bed Unit	100 4 400
Storage	60
Other / Circulation	200
1F GFA	945



BF

Unit Number	GFA
Changing Room	40
Pool Lounge	100
1 Bed Unit	100 2 200
1 Bed Unit	140 2 280
2 Bed Unit	160 2 320
Other / Circulation	225
BF GFA	1165

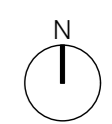
Arrival / Guest Cabin GFA	2110
Footprint	985 sqm

KENGO KUMA & ASSOCIATES
隈研吾建築都市設計事務所

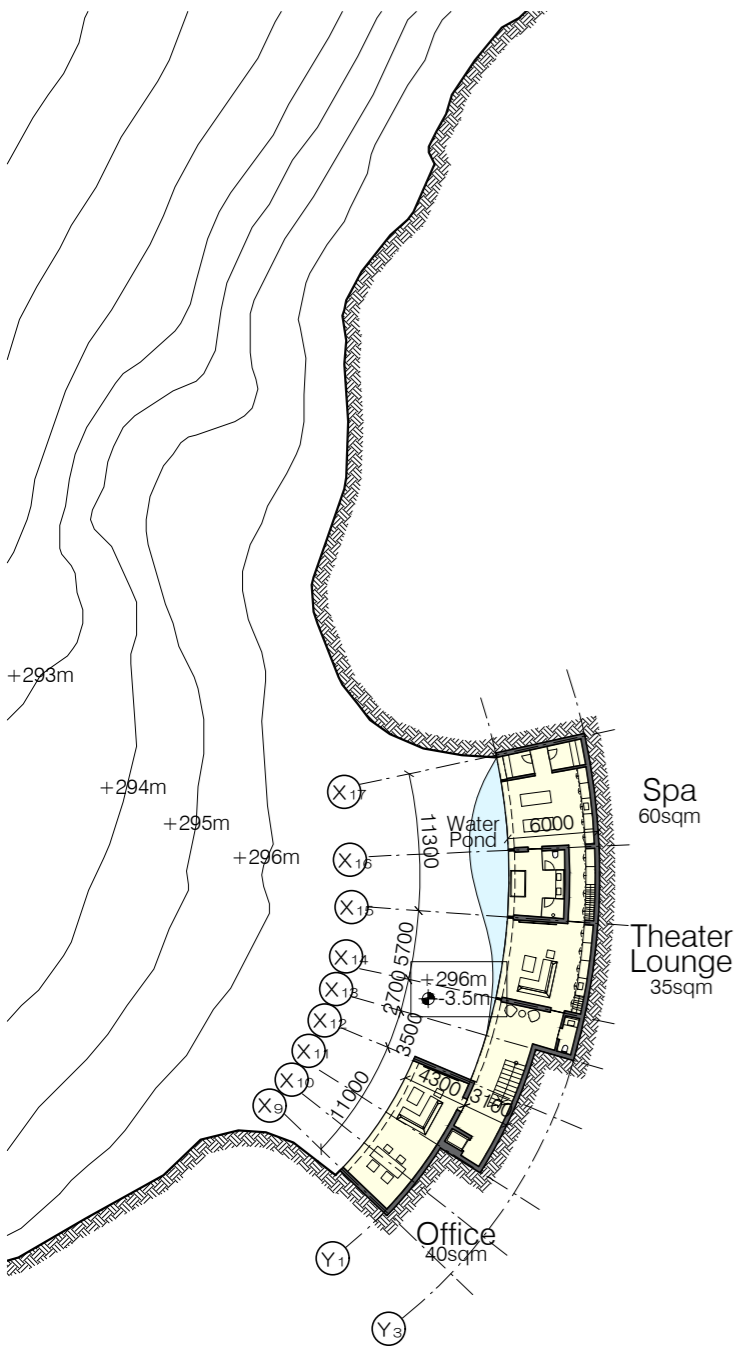
rough & milne landscape architects

Architects Proposed Arrival and Guest Cabin Plan 1:500
Source: Kengo Kuma & Associates

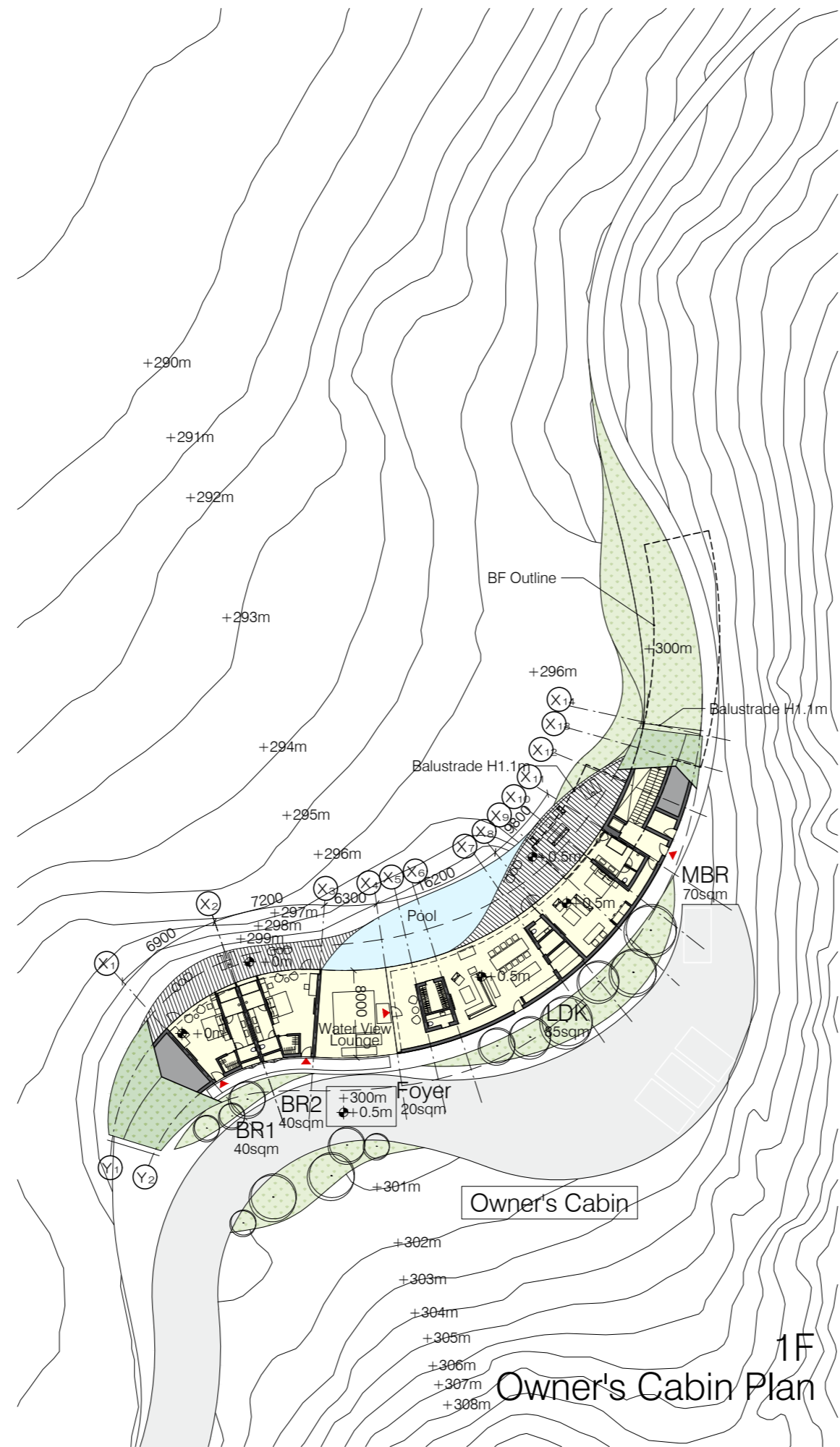
Proposed Development, Damper Bay, Wanaka - Mt Aspiring Road, Wanaka
August 2021



SHEET
12



BF
Owner's Cabin Plan



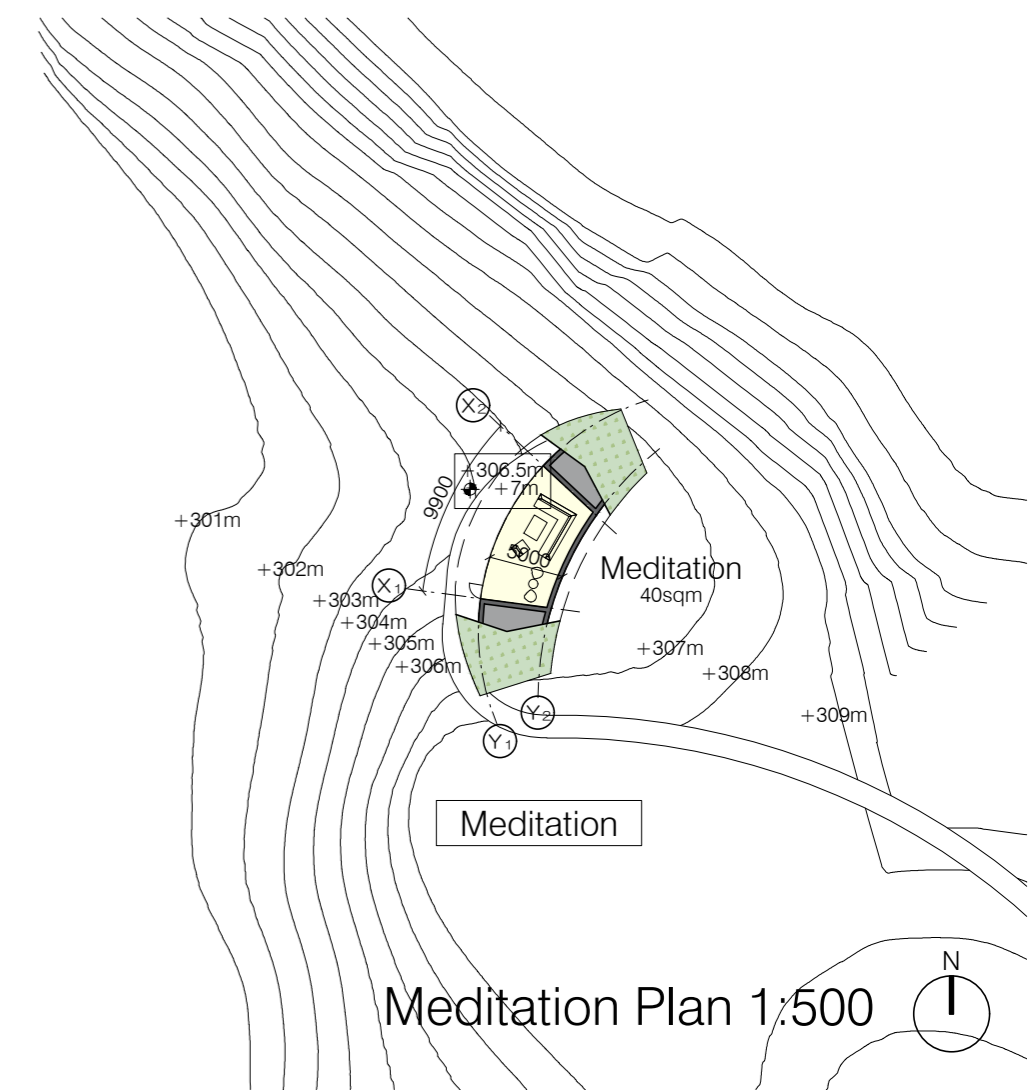
1F
Owner's Cabin Plan

Owner's Cabin	GFA
1F	
Foyer	20
Living	35
Dininig	20
Kitchen	20
Master Bedroom	70
Bedroom1	40
Bedroom2	40
BOH	10
Other / Circulation	130
1F GFA	385

BF	GFA
Spa	60
Theater Lounge	35
Office	40
Other / Circulation	45
BF GFA	180

Owner's Cabin GFA	565
Footprint	385 sqm

Meditation	GFA
1F	
Meditation	40
Meditation GFA	40
Footprint	40 sqm



Meditation Plan 1:500

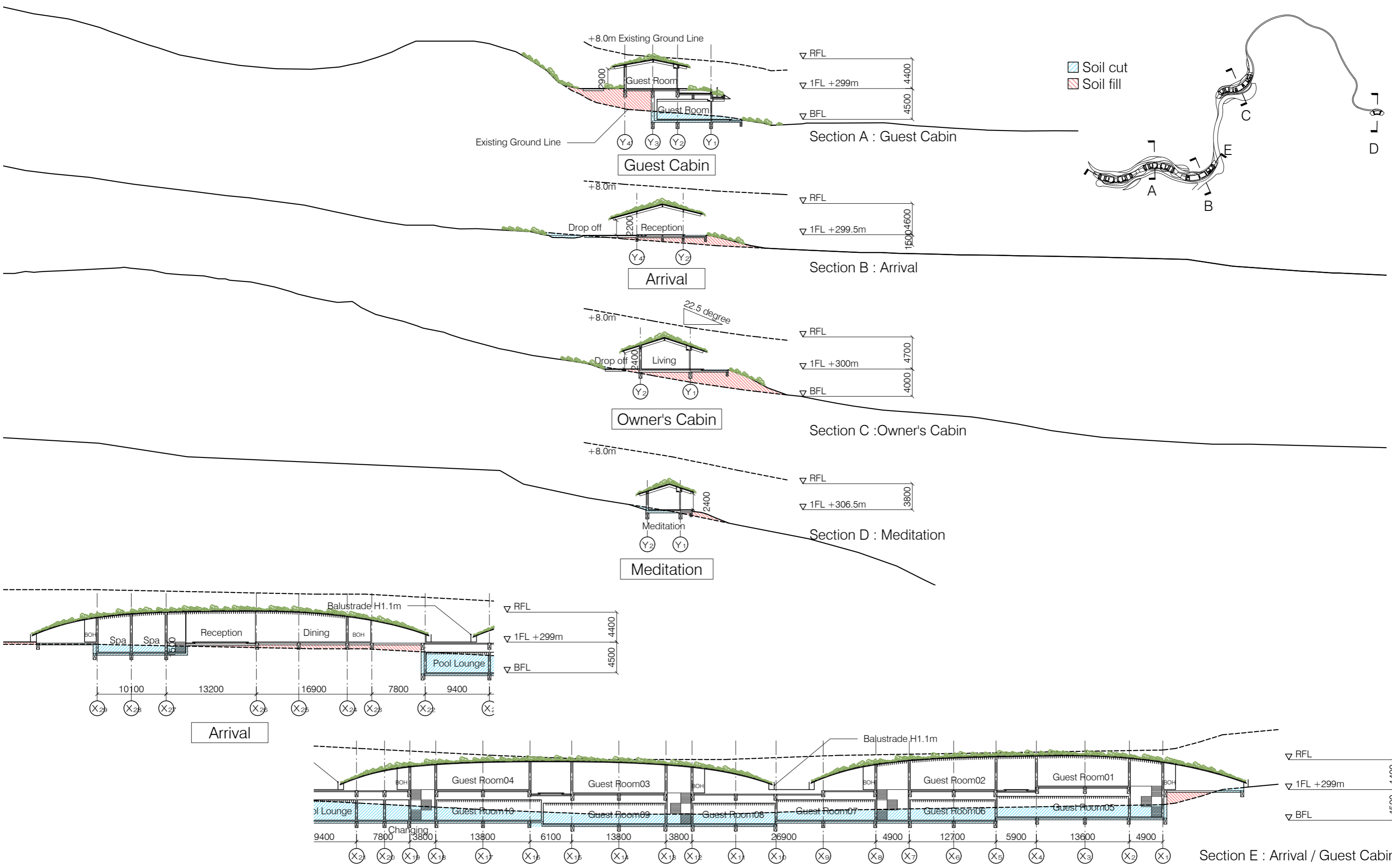
KENGO KUMA & ASSOCIATES
隈研吾建築都市設計事務所

rough & milne landscape architects

Architects Proposed Owners Cabin and Meditation Plan 1:500
Source: Kengo Kuma & Associates

Proposed Development, Damper Bay, Wanaka - Mt Aspiring Road, Wanaka
August 2021

SHEET
13





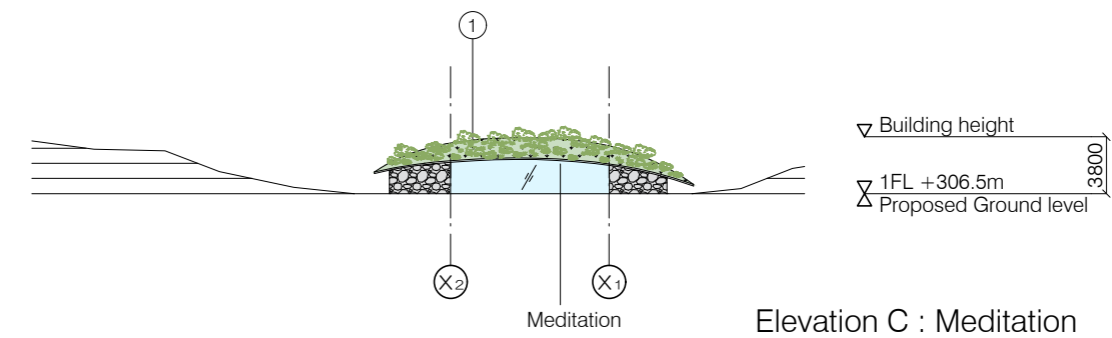
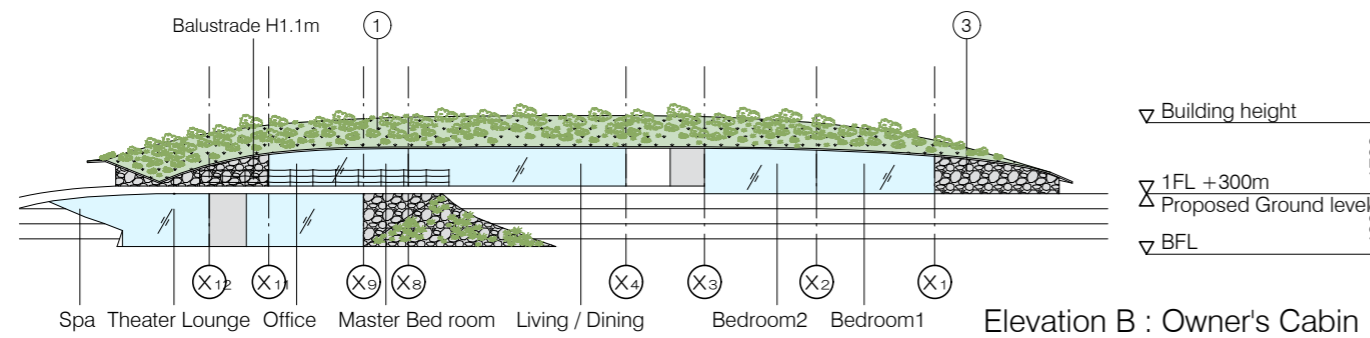
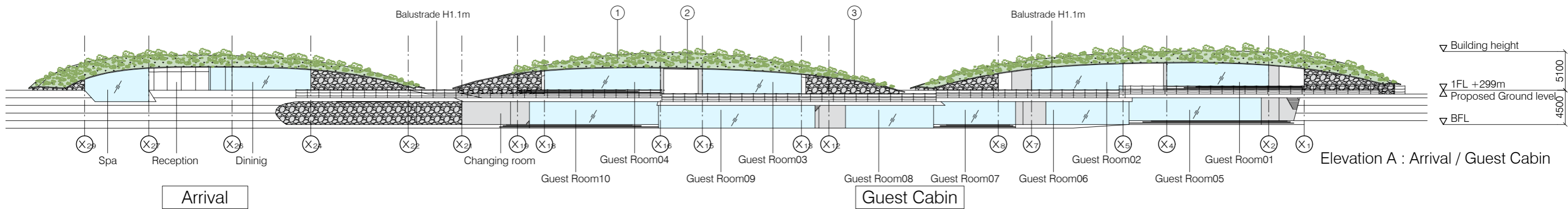
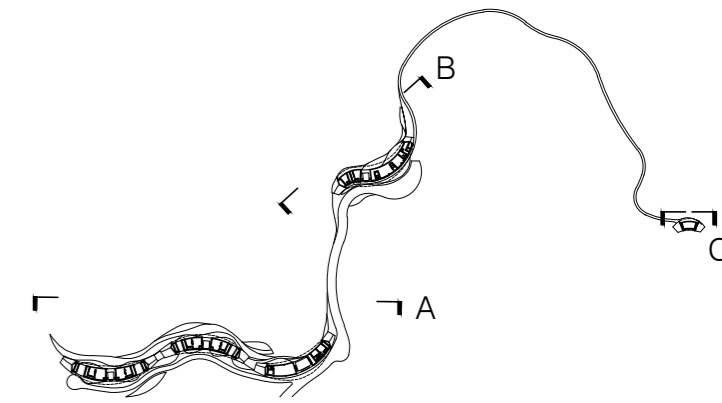
① Roof : Green

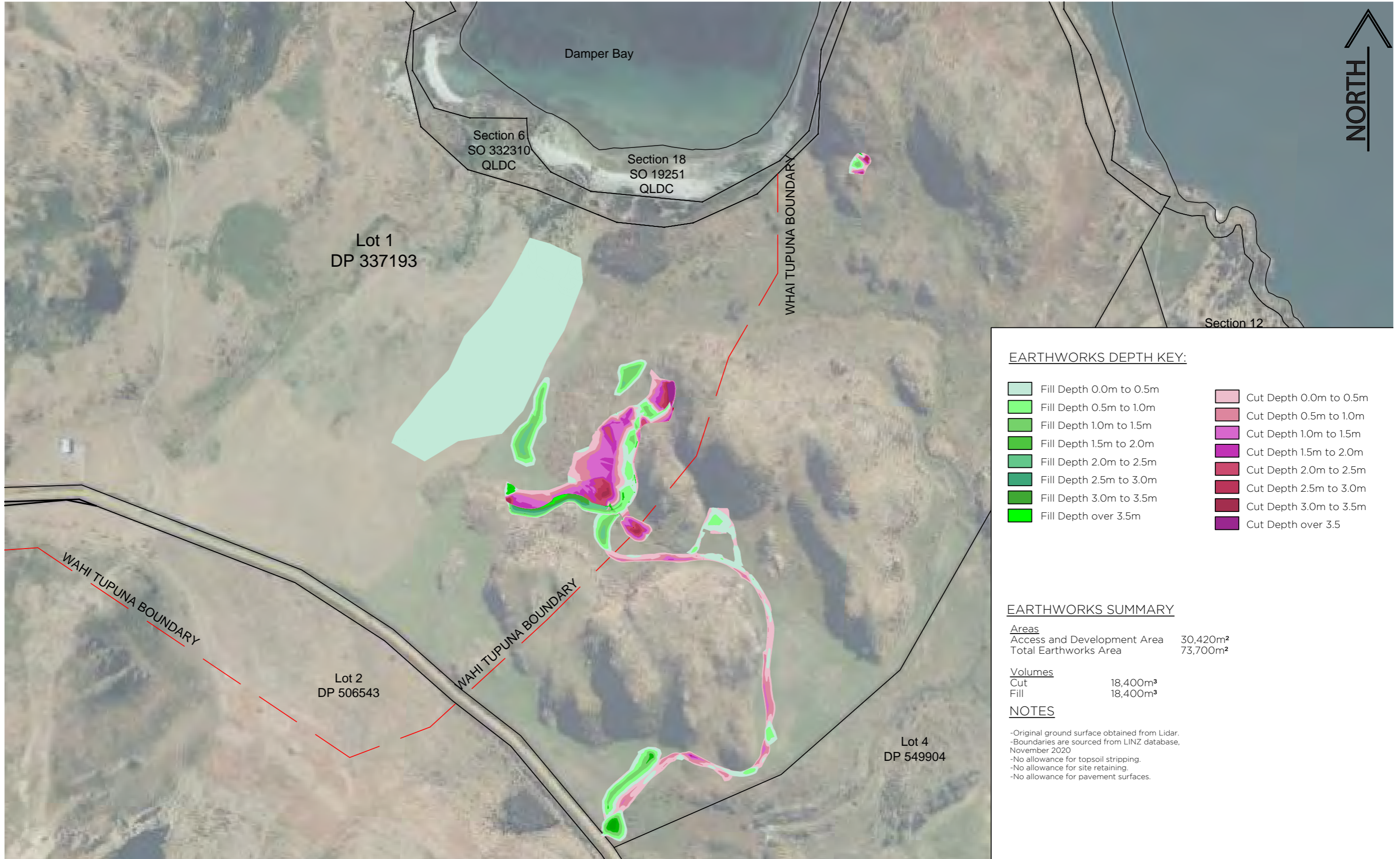


② Soffit : Accoya Wood



③ Wall : Stone





EARTHWORKS DEPTH KEY:

 Fill Depth 0.0m to 0.5m	 Cut Depth 0.0m to 0.5m
 Fill Depth 0.5m to 1.0m	 Cut Depth 0.5m to 1.0m
 Fill Depth 1.0m to 1.5m	 Cut Depth 1.0m to 1.5m
 Fill Depth 1.5m to 2.0m	 Cut Depth 1.5m to 2.0m
 Fill Depth 2.0m to 2.5m	 Cut Depth 2.0m to 2.5m
 Fill Depth 2.5m to 3.0m	 Cut Depth 2.5m to 3.0m
 Fill Depth 3.0m to 3.5m	 Cut Depth 3.0m to 3.5m
 Fill Depth over 3.5m	 Cut Depth over 3.5

EARTHWORKS SUMMARY

<u>Areas</u>	
Access and Development Area	30,420m ²
Total Earthworks Area	73,700m ²
<u>Volumes</u>	
Cut	18,400m ³
Fill	18,400m ³

NOTES

- Original ground surface obtained from Lidar.
- Boundaries are sourced from LINZ database, November 2020
- No allowance for topsoil stripping.
- No allowance for site retaining.
- No allowance for pavement surfaces.

1:5000 @ A3



NOTE :
Underlying landscape plan is now superseded and is to be updated.

DRAFT WATER SUPPLY CONCEPT FOR DAMPER BAY

Proposed Water Supply
Data Source: Central Water

Proposed Development, Damper Bay, Wanaka - Mt Aspiring Road, Wanaka
August 2021

DRAWN :- K. HIGGIE
DATE :- 27/8/21
SCALE :- 1:5,000 A3 APPROX

REF :-

DB2.2

SHEET
17

KEN HIGGIE LTD
CENTRALWATER
P.O. Box 52,
Alexandra
Phone/fax 03 4487673
Cell 0274 716411

rough & milne landscape architects