

# OPTIONS FOR THE TOWN CENTRE

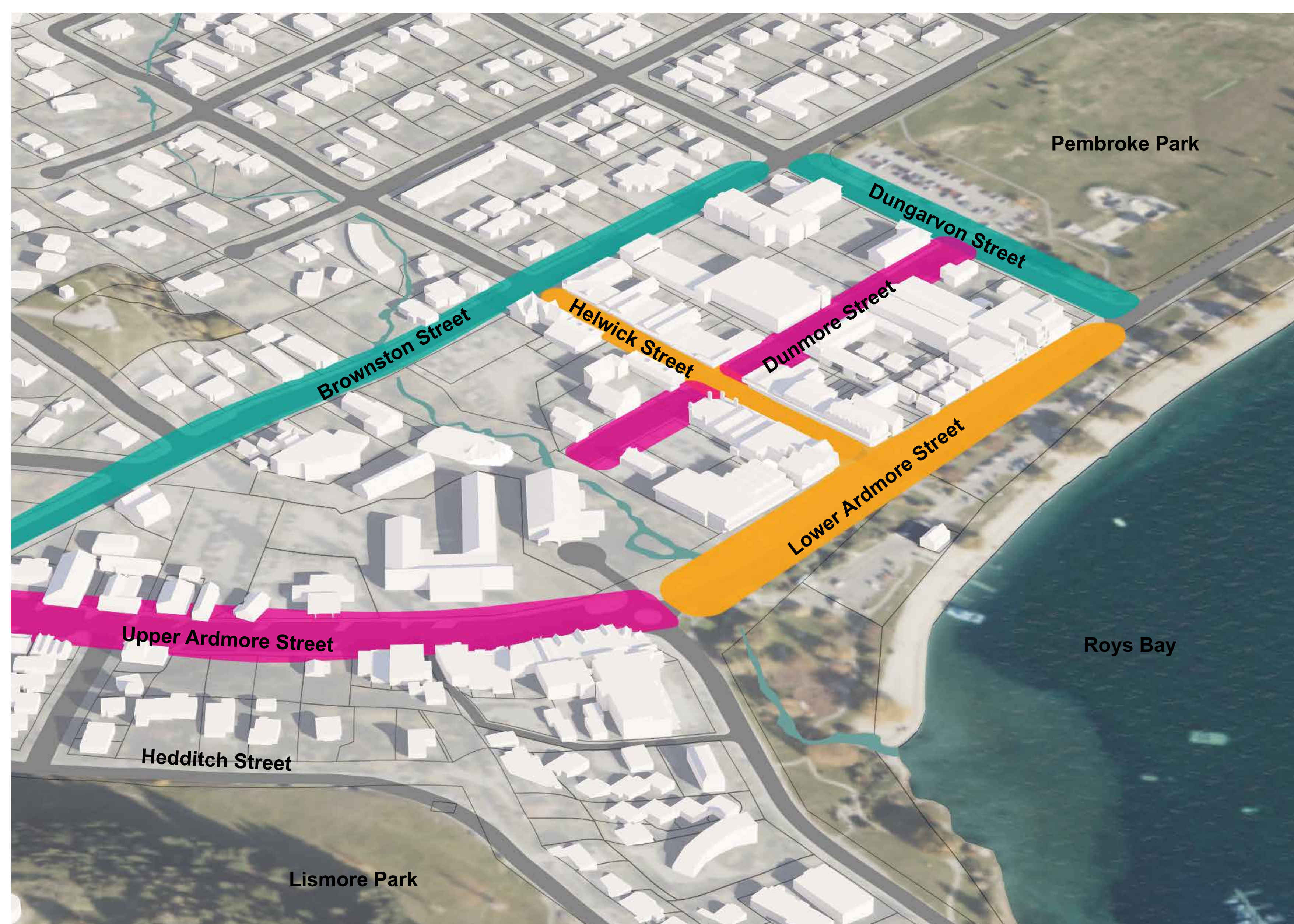
## STREETS



The community have said they want to rebalance vehicle and pedestrian movement in the town centre. To do this it is important to plan the function and use of each street as they will vary in the balance in the movement, place or commercial function.

The following street functions are currently being considered:

- + **HELWICK STREET** - retail mall, pedestrian focus with some on street parking and slow traffic speeds
- + **LOWER ARDMORE STREET** - food, beverage and social gathering, pedestrian and cyclist focus with service vehicle access
- + **DUNMORE STREET** - retail and movement, vehicle and pedestrian balance, service and vehicle access, some on street parking and slow traffic speeds
- + **UPPER ARDMORE** - retail and movement with vehicle and pedestrian balance, service and vehicle access, some on street parking and slow traffic speeds
- + **DUNGARVON STREET** - movement, vehicle and pedestrian balance, service and vehicle access, some on-street parking and slow traffic speeds
- + **BROWNSTON STREET** - movement, vehicle, cycle and pedestrian balance, east west vehicle access with slow traffic speeds, cycle route and pedestrian crossings



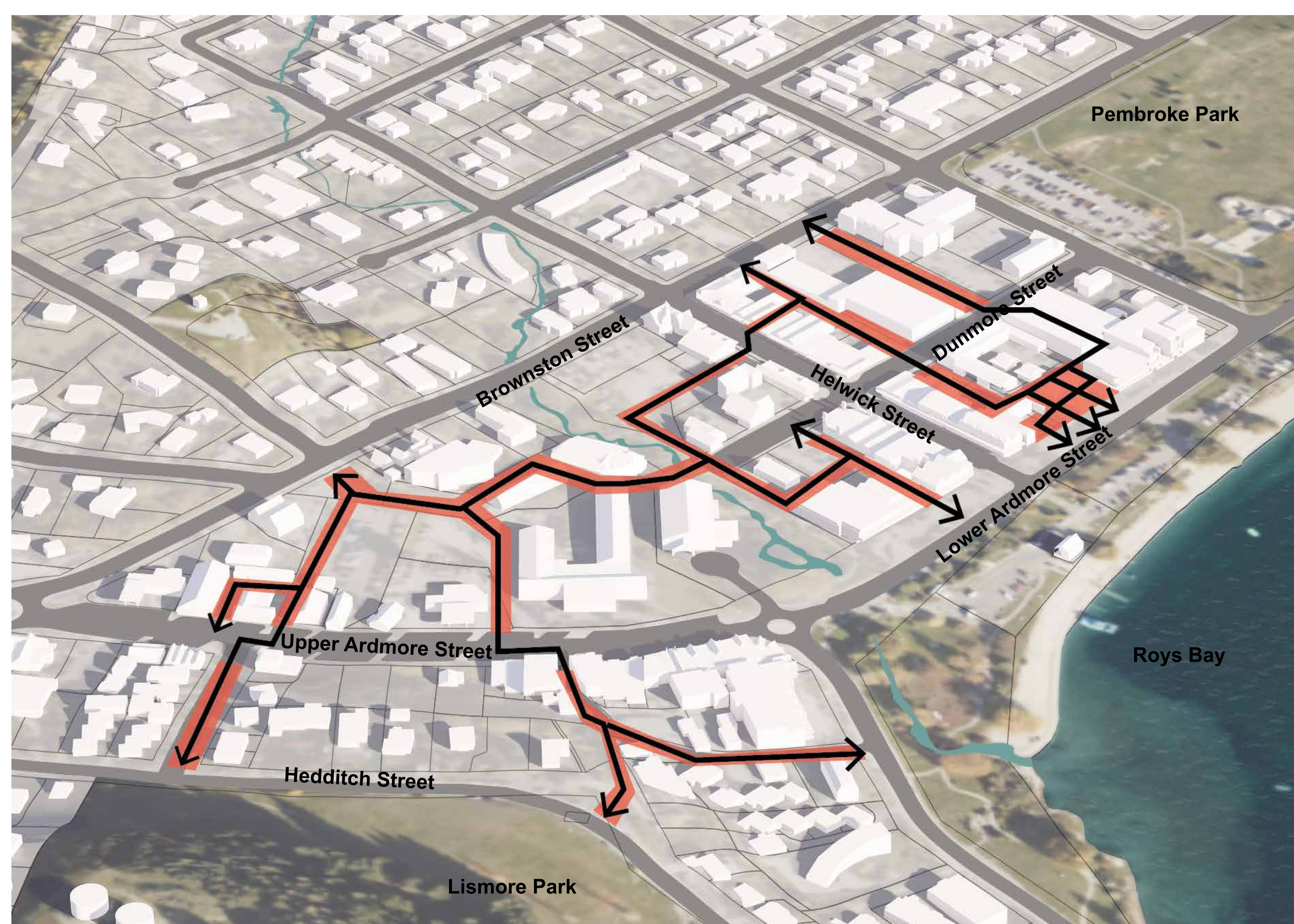
## LANEWAY NETWORK



Wanaka town centre already has some pockets of very successful lane and access ways that provide character and people scaled spaces. We are proposing to strengthen the existing lanes, to connect them up and form a network across the town centre.

This will include connecting public and private lanes and access ways with a diversity of functions and characters that balance vehicle access, retail and pedestrian functions.

The diagram opposite shows the potential laneway network across the town centre and is a combination of public lanes and private access ways.



# OPTIONS FOR THE TOWN CENTRE

## CIVIC HEART



Wanaka has few civic activities or spaces, and the existing facilities are dispersed and generally not visible. There is an opportunity to establish a strong civic and community heart in the town centre. This will include enhancing existing community facilities and introducing new ones.

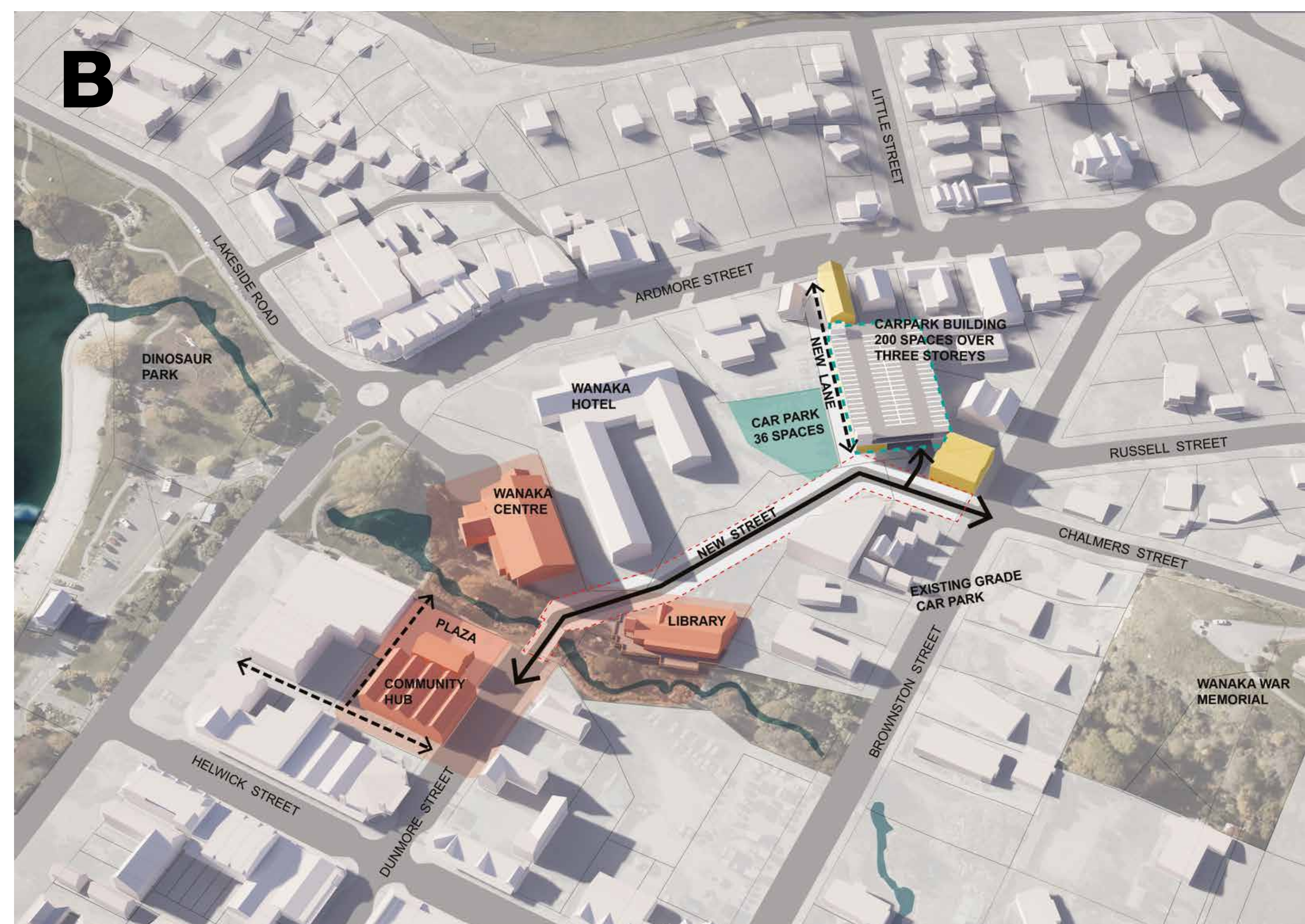
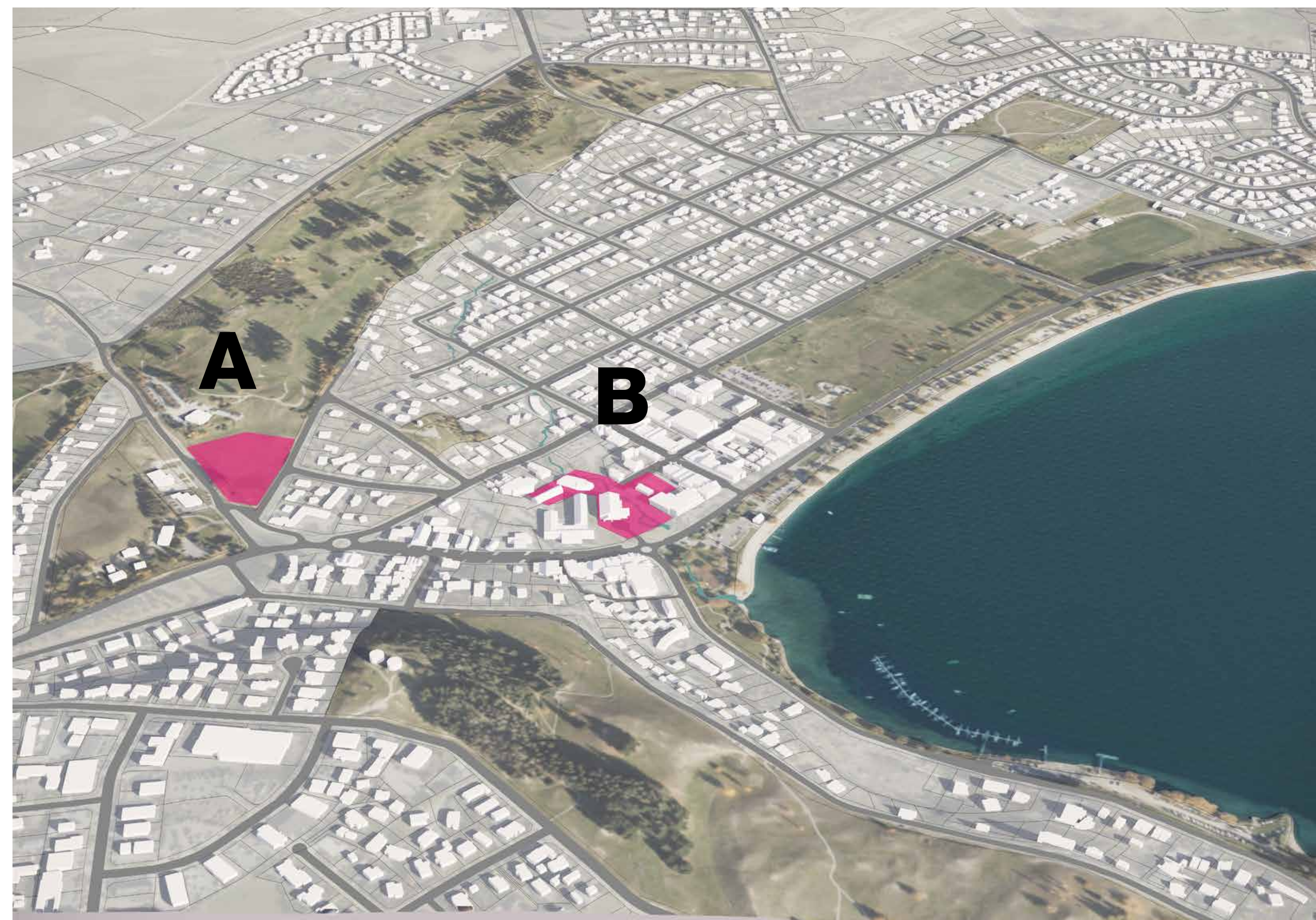
A potential mix of facilities for a Civic Heart could include:

- + Performing Arts Centre
- + Wanaka Centre/Community Hall (upgrade to larger 500+ seat performing arts venue)
- + Community Meeting Spaces
- + Arts Centre (replacement)
- + Library (existing)
- + Youth Centre
- + Art Gallery
- + Museum
- + Cultural Centre

## CIVIC HEART LOCATION

Two options for a new civic heart have been identified:

- A)** Split between the existing Wanaka Centre and Library locations and new building/s on the corner of Stratford Terrace and Ballantyne Road within the Wanaka Golf Course grounds.
- B)** Expansion of the existing civic area around Bullock Creek through retention of the Wanaka Centre and Library, and construction of new building/s and a civic plaza surrounding the Masonic Hall on the Dunmore Street Carpark.



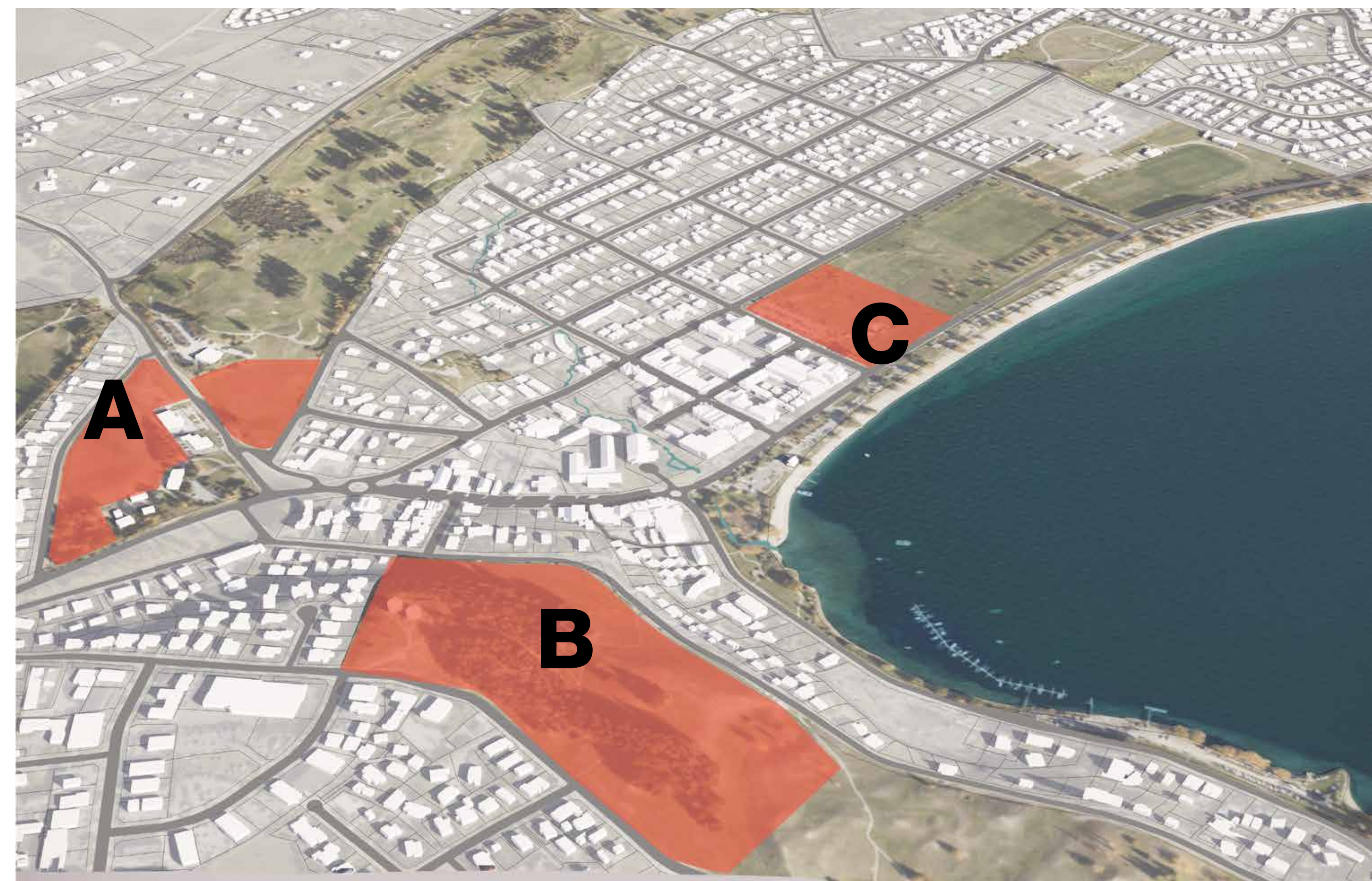
# OPTIONS FOR THE TOWN CENTRE

## GARDENS



A civic garden in the town centre could celebrate some of the regional flora, create a future legacy for Wanaka and a destination for tourists. Three potential locations for the Wanaka Gardens have been identified:

- A)** Behind DOC, Police and fire stations and the corner of Stratford Terrace and Ballantyne Road within the Wanaka Golf Course grounds
- B)** Lismore Park
- C)** Eastern end of Pembroke Park

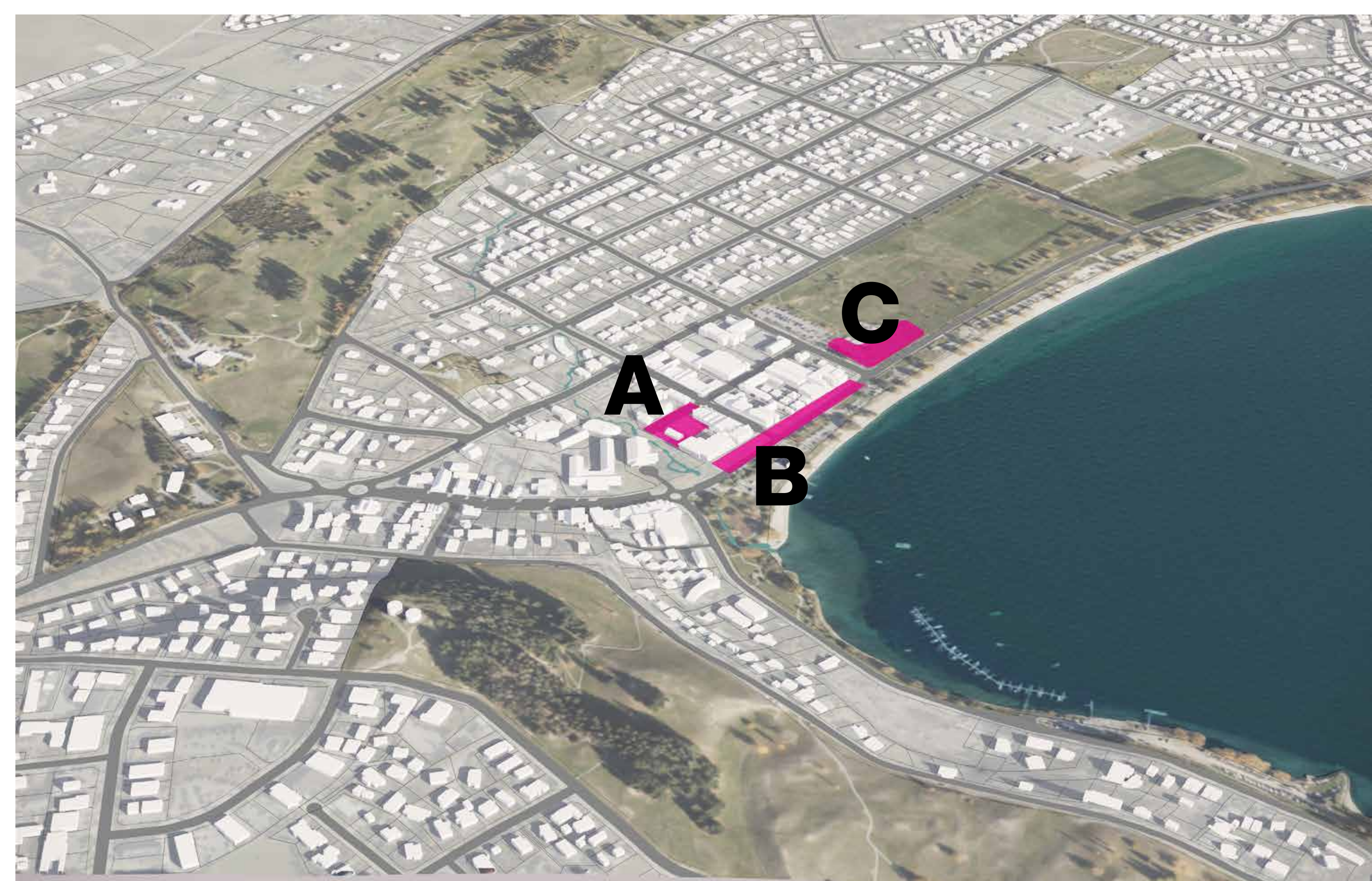


## MARKET LOCATIONS



Wanaka has a great market scene, but the existing spaces can feel disconnected from the town centre and be windy at times. There are alternative locations that could accommodate markets within the town centre.

- A)** Masonic Hall Plaza and Dunmore Street
- B)** Ardmore Street
- C)** Existing location on the north-eastern end of Pembroke Park



## PLAY OPPORTUNITIES



Wanaka is a family friendly location, and we'd love to build on that and provide more opportunities for children and teenagers to play and mix socially. The following locations are currently being considered to complement existing play opportunities:

- A)** Bullock Creek informal stream side play
- B)** Masonic play tower
- C)** Lakeside play trail

