

Item 1: Draft Blue Green Network Plan

SESSION TYPE: Workshop

PURPOSE/DESIRED OUTCOME:

Purpose:

1. Ensure the Wānaka Upper Clutha Community Board are informed of the process to date.
2. Present the draft Blue Green Network Plan.

Workshop:

To share and take feedback on the draft Blue Green Network Plan, to introduce the Kāi Tahu Blue Green Network, and to discuss future implementation methods.

DATE/TIME:

Tuesday, 20 February 2025 at 11.00am

TIME BREAKDOWN:

Presentation: 15 minutes

Workshop/Discussion: 15 minutes

Prepared by:



Name: Jeannie Galavazi
Title: Principal Parks Planner
4 February 2025

Reviewed and Authorised by:



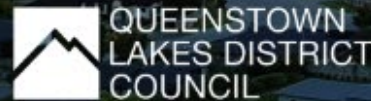
Name: Ken Bailey
Title: GM Community Services
10 February 2025

ATTACHMENTS:

A	Draft Blue Green Network Plan
B	Presentation to the Wānaka Upper Clutha Community Board on the Blue Green Network – July 2023 (for background reading)
C	Presentation on the draft Blue Green Network Plan (to be presented on the day).

BLUE GREEN NETWORK PLAN

DRAFT FOR CONSULTATION

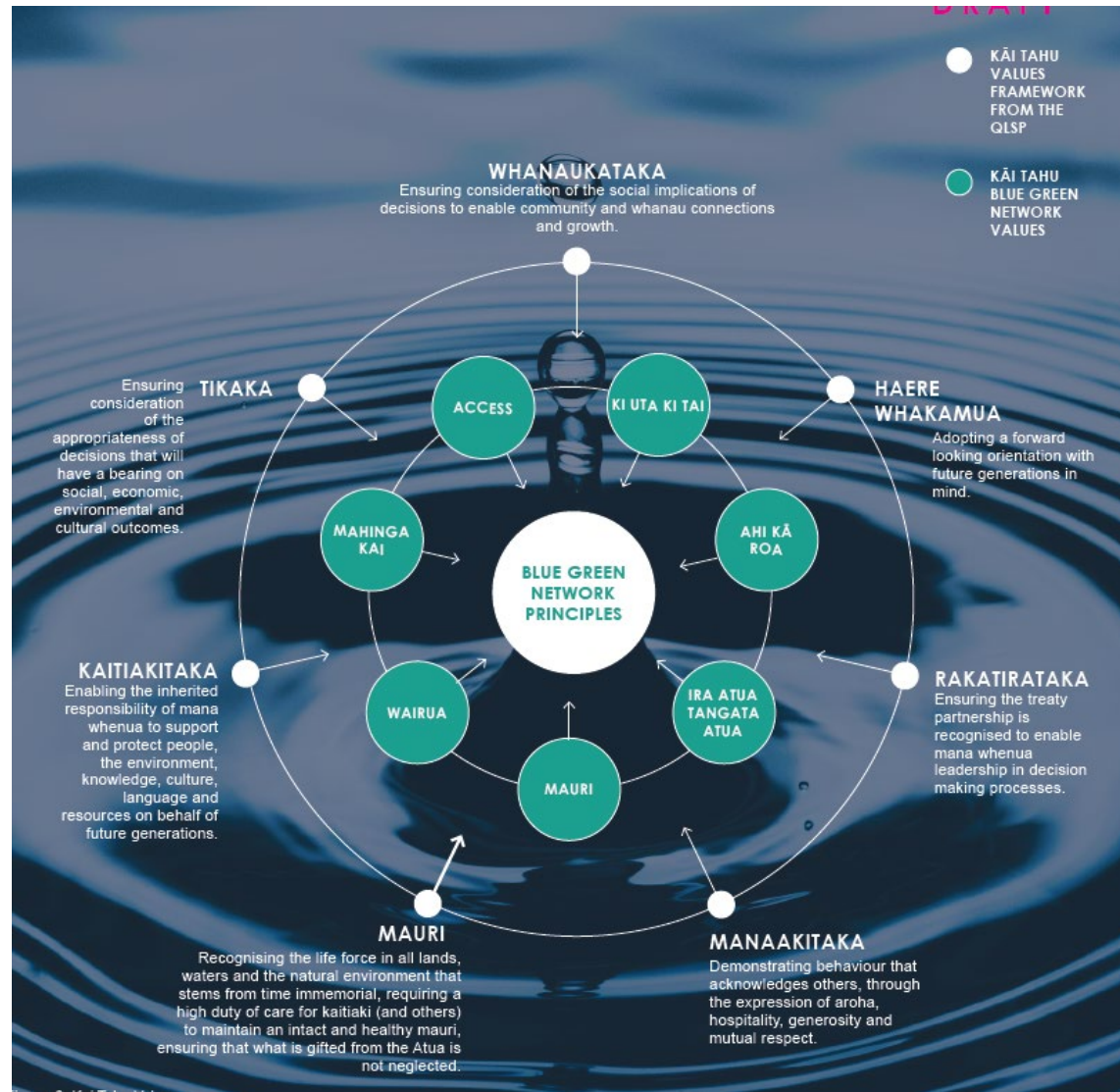


Boffa Miskell



OCTOBER 2024

KAI TAHU BLUE GREEN NETWORK



- Ki uta ki tai encompassing paradigm
- Different to values but related principles cultural constructs and associations
- QLDC Blue Green Network sits inside a Kāi Tahu paradigm

How does the plan sit in a Kāi Tahu Space?

- Partnership approach through wānanga
- Outcome: Kāi Tahu Blue Green Network report
- Key elements:
 - Ki Uta Ki Tai
 - Filling the gaps
 - Outcome delivery
 - Collaboration
- Acknowledging and valuing different paradigms



What does the BGN Plan do?

DRAFT

GEOGRAPHIC SCOPE

The 2021 Queenstown Lakes Spatial Plan identified several Priority Areas and Settlements across Whakatipu and Upper Clutha, which could accommodate future residential growth in the Queenstown Lakes District. These areas are the focus of this plan, where blue and green networks can frame, enhance and connect future growth and change. The 21 Priority Development and Settlement areas are:


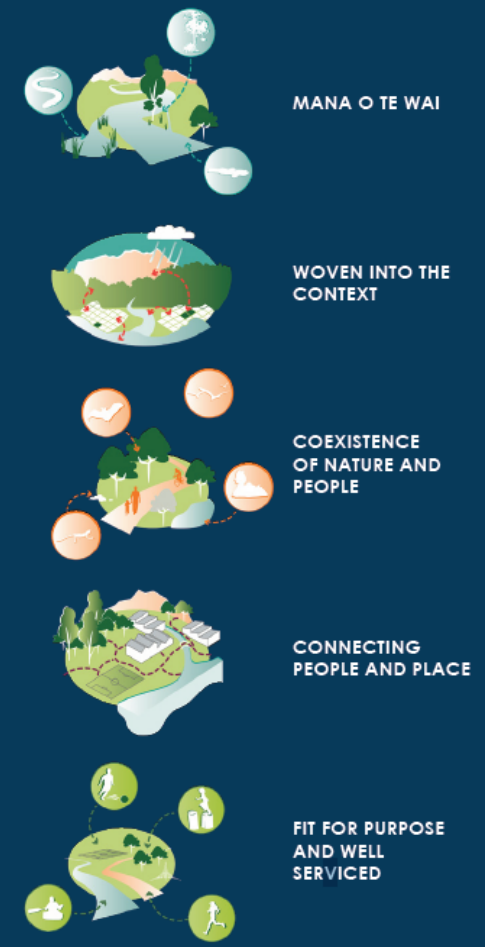


Figure 2: Geographic scope of Blue Green Network

WHAKATIPU BASIN	UPPER CLUTHA
Tāhuna Queenstown	Take Kārara Wānaka Central
Queenstown Hill / Frankton Road	Three Parks
Fernhill / Sunshine Bay	4 Wānaka North
1 Te Kirikiri Frankton	Wānaka South
Te Pūtahi Eastern Corridor	Wānaka West
Te Tapuae Southern Corridor	Albert Town
Kelvin Heights	5 Luggate
1 Arthurs Point	6 Lake Hāwea
2 Kā Muriwai Arrowtown	7 Cardrona
3 Tāhuna Glenorchy	8 Makarora
Takerehaka Kingston	

PRINCIPLES



- MANA O TE WAI
- WOVEN INTO THE CONTEXT
- COEXISTENCE OF NATURE AND PEOPLE
- CONNECTING PEOPLE AND PLACE
- FIT FOR PURPOSE AND WELL SERVED

Figure 3: Blue Green Network Principles

LOCAL BLUE GREEN PLANS

The Local Blue Green Plans are a series of strategic plans designed to integrate natural and recreational elements within a landscape to enhance social and environmental well-being. These plans combine blue elements, such as rivers, lakes, wetlands, and streams, with green elements, including ecological corridors and recreational spaces like parks, trails, destinations, and arrival nodes. The goal is to create interconnected systems that support biodiversity, improve water management, and provide spaces for community recreation and cultural activities.

This document includes 21 Local Green Blue Plans for each of the Priority Development and Settlement areas.




Figure 4: Example of Local Blue Green Plans

DIGITAL BLUE GREEN NETWORK

The combined Local Blue Green Plans and their data attributes are also documented and managed digitally in a separate Geographic Information System (GIS) held by QLDC, where they can be cross-referenced and periodically updated along with other mapping information the Council and other agencies hold.

QUEENSTOWN LAKES DISTRICT COUNCIL | DRAFT BLUE GREEN NETWORK PLAN | INTRODUCTION

- Strategic Long Term Framework
- Defines and identifies key BGN features
- Identifies opportunities for protecting and integrating BGN features into planning and development of districts urban areas and settlements
- Emphasises importance of preserving the Wai

Blue Green Network COMPONENTS



BLUE NETWORK

- ① Lakes Foreshores Bays
- ② Rivers Streams Creeks
- ③ Wetlands
- ④ Green Infrastructure

GREEN NETWORK

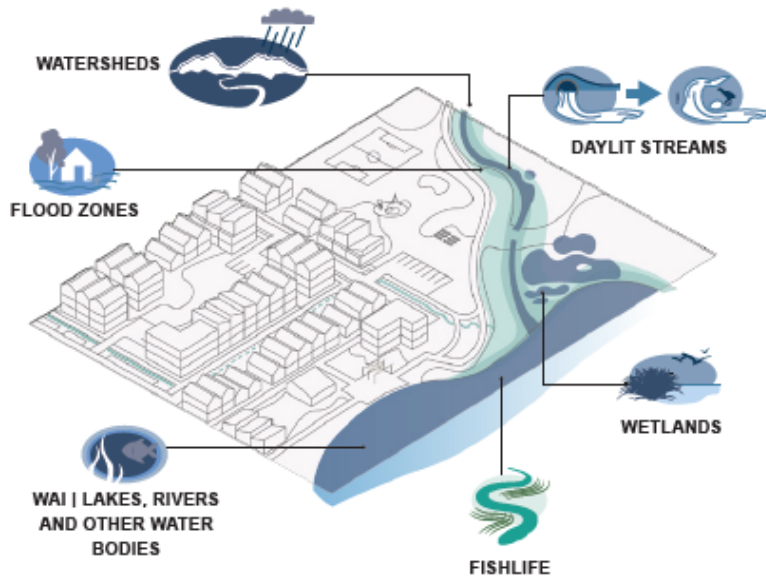
- ⑤ Natural and Scenic Reserves
- ⑥ Ecological Corridors

COMMUNITY NETWORK

- ⑦ Parks and Open Spaces
- ⑧ Tracks and Trails
- ⑨ Streets and Civic Spaces

How to plan for within development

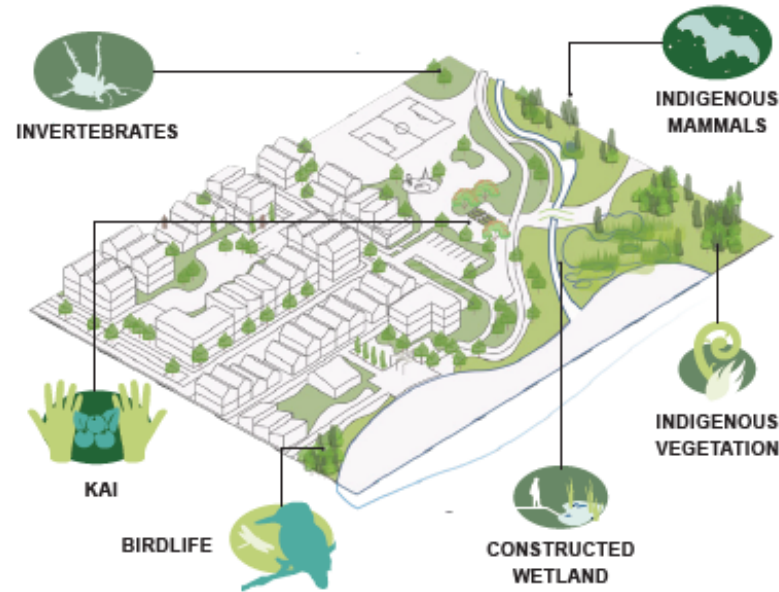
BLUE COMPONENTS



BLUE NETWORK

Lakes Foreshores Bays
Rivers Streams Creeks
Wetlands
Green Infrastructure

GREEN COMPONENTS



GREEN NETWORK

Natural and Scenic Reserves
Ecological Corridors

COMMUNITY COMPONENTS



COMMUNITY NETWORK

Parks and Open Spaces
Tracks and Trails
Streets and Civic Spaces

PRINCIPLES



ALIGNMENT TO KĀI TAHU VALUES

MAURI
KI UTA KI TAI

KI UTA KI TAI

RAKATIRATAKA
AHIKĀ ROA
KAITIAKITAKA
MAHINGA KAI

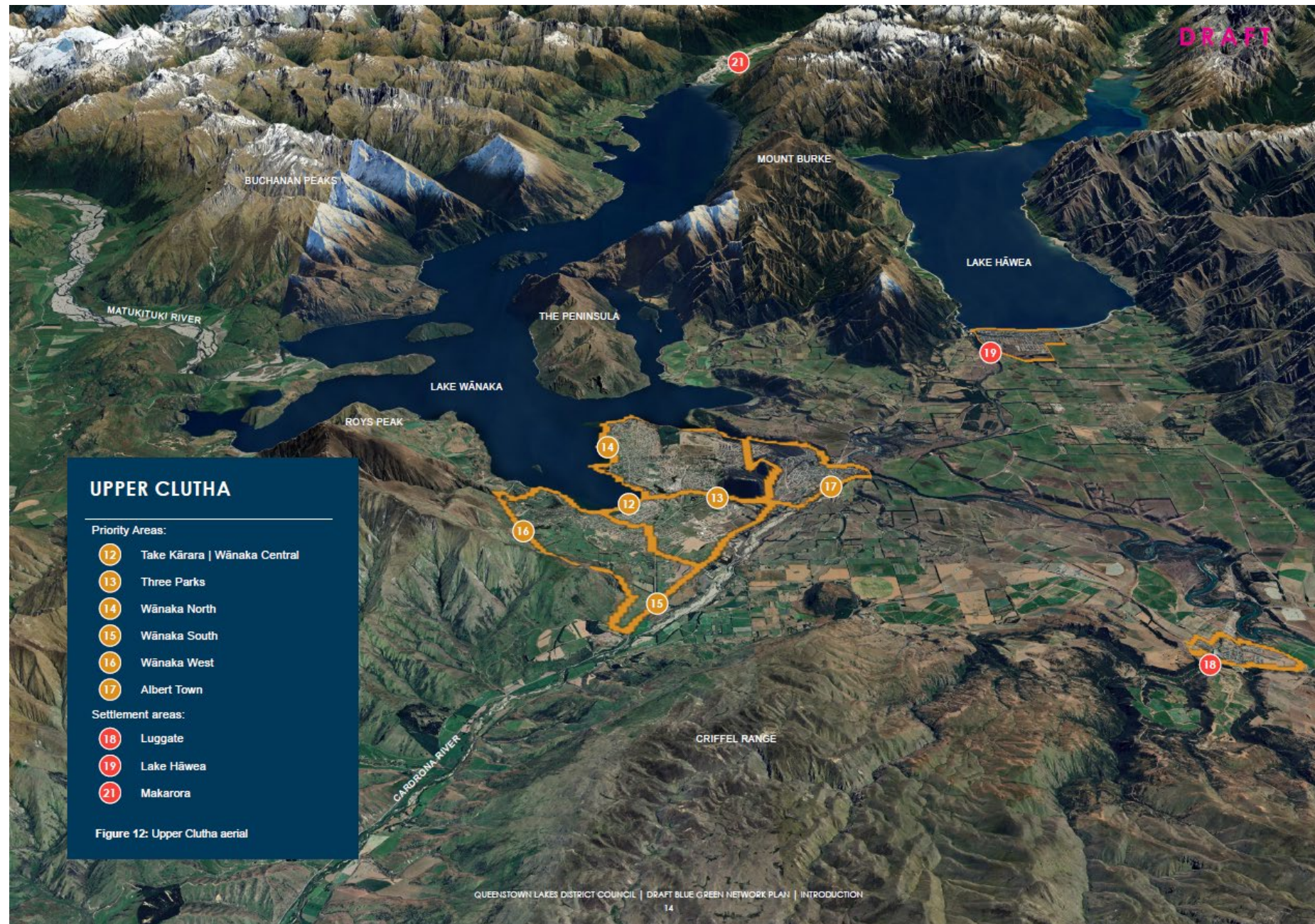
WHANAUKATAKA
ACCESS

WHAKATIPU BASIN



Date can go here
www.qldc.govt.nz/your-council/major-projects/queenstown-lakes-spatial-plan

UPPER CLUTHA



Implementation Approach

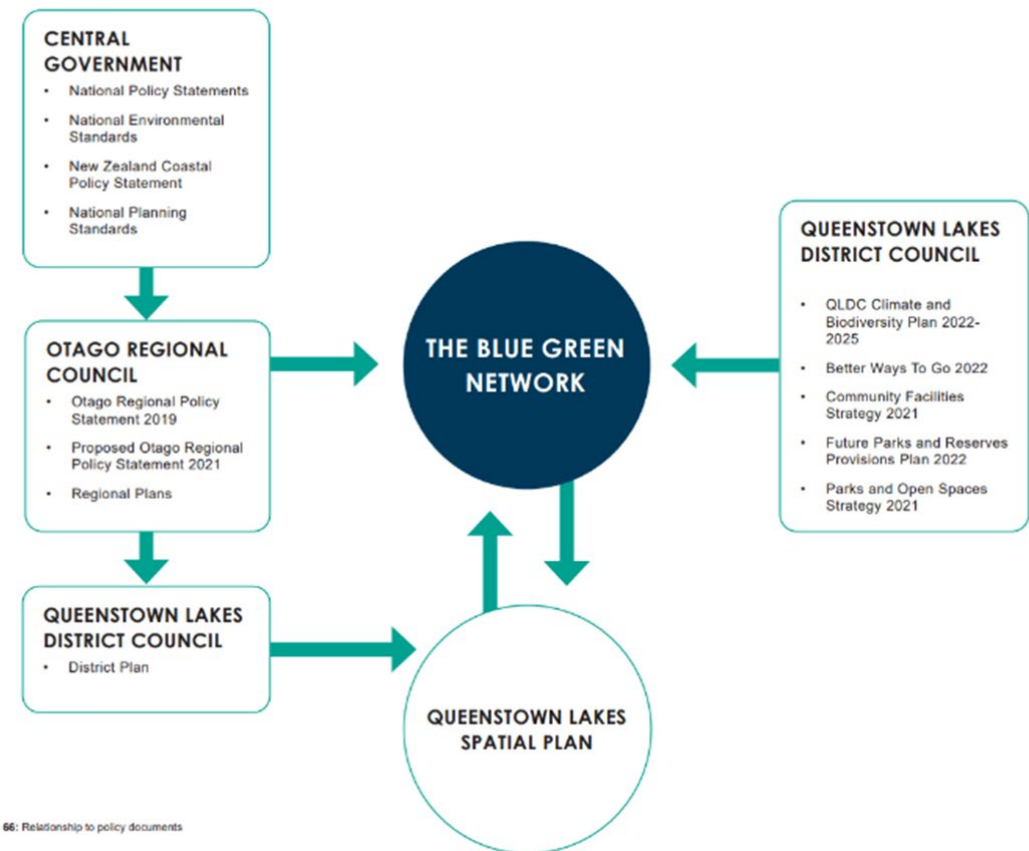


Figure 66: Relationship to policy documents

- Develop and implement the suite of outcome delivery mechanisms to assist with the implementation connecting the strategic intent to outcomes on the ground.

ID	PROJECTS	DESCRIPTION
	Grow Well Whāiora Spatial Plan Gen 2.0 / Future Development Strategy	Integrate BGN Plan values and principles and high-level Local Blue Green Plan projects and opportunities into the Spatial Plan to provide greater statutory weight. Ensure the Future Development Strategy considers Local Blue Green Plans in urban form relationships and capacity calculations.
	QLDC Structure Plans	Integrate BGN Plan values and principles and refine future projects and opportunities from the Local Blue Green Plans into Priority Area and Settlement structure plans.
	QLDC Development Contributions Policy (DC Policy)	Review the DC Policy, Contributing Area Maps and QLDC Asset Schedules to integrate BGN Plan values and principles and fund Local Blue Green Plan projects and opportunities as part managing residential, commercial, and industrial growth.
	QLDC Parks and Open Spaces Strategy 2021	Align any proposed revision of the Parks and Open Spaces Strategy with the BGN Plan, including a review and update the parks and open spaces typologies and associated definitions.
	QLDC Future Parks and Reserve Provisions Plan 2022	Align any proposed revision of the Future Parks and Reserve Provisions Plan with the BGN Plan, including proactively identifying suitable locations for various open space typologies for early greenfield investment or seeking opportunities to fill of gaps within existing urban areas.
	QLDC Asset Management Plan 202X	Align any proposed revision of the QLDC Asset Management Plan with the BGN Plan, to integrate BGN Plan projects and update and refine Local Blue Green Plan projects and opportunities.
	QLDC Community Facilities Strategy 2021	Align any proposed revision of the Community Facilities Strategy with the BGN Plan, including managing the interrelated networks, functions, and activities to optimise co-location opportunities.
	W2G Better Ways to Go 2022	Align any proposed revision of the Better Ways to Go mode shift plan with the BGN Plan to address gaps in the trail network and consider potential mutual benefits from integrating transport and open space planning.
	QLDC Reserve Management Plans	Integrate BGN Plan values and principles and refine Local Blue Green Plan projects and opportunities as part of reviewing relevant reserve management plans.
	ORC / QLDC Annual and Long Term Plans	Seek operational funding for services to progress the BGN Plan recommendations and for capital funding to deliver Local Blue Green Plan infrastructure projects, as part of the Regional and District's Annual and Long Term Plans.
	QLDC District Plan	When <u>implementing the</u> District Plan, particularly through plan changes and subdivision consents, ensure plan and developers or landowners are delivering the Blue Green Network.
	Mana Whenua-led Assessments	QLDC allocate time and resources to enable Kāi Tahu to undertake mana whenua led assessments to further test the mechanisms and processes to inform a final version of the Kāi Tahu Blue Green Network.
	Kāi Tahu Tree and Planting Guide	QLDC collaborate with Kāi Tahu to develop policy guidance including operating policy to support the planting of tree and plant species that enhance Kāi Tahu outcomes including urban enhancement and ecological restoration sites
	Waterways Mapping	Map all the waterways in the <u>District</u> to inform a catchment-based approach, such as Wai Whakaata.
	Kāi Tahu Strategic Work Programme	QLDC collaborate with Kāi Tahu to confirm a strategic work programme that supports testing the Kāi Tahu Blue Green Network at priority sites. Possible sites for initial testing include: <ol style="list-style-type: none"> 1. Horne Creek 2. Wai Whakaata (catchment scale) 3. Te Tapuae Southern Corridor Structure Plan
	Mahinga Kai Implementation Plans	QLDC collaborate with Kāi Tahu to create Mahinga kai implementation plans to restore Kāi Tahu connections, associations, and practices.
	QLDC Subdivision Code of Practice	

Next Steps

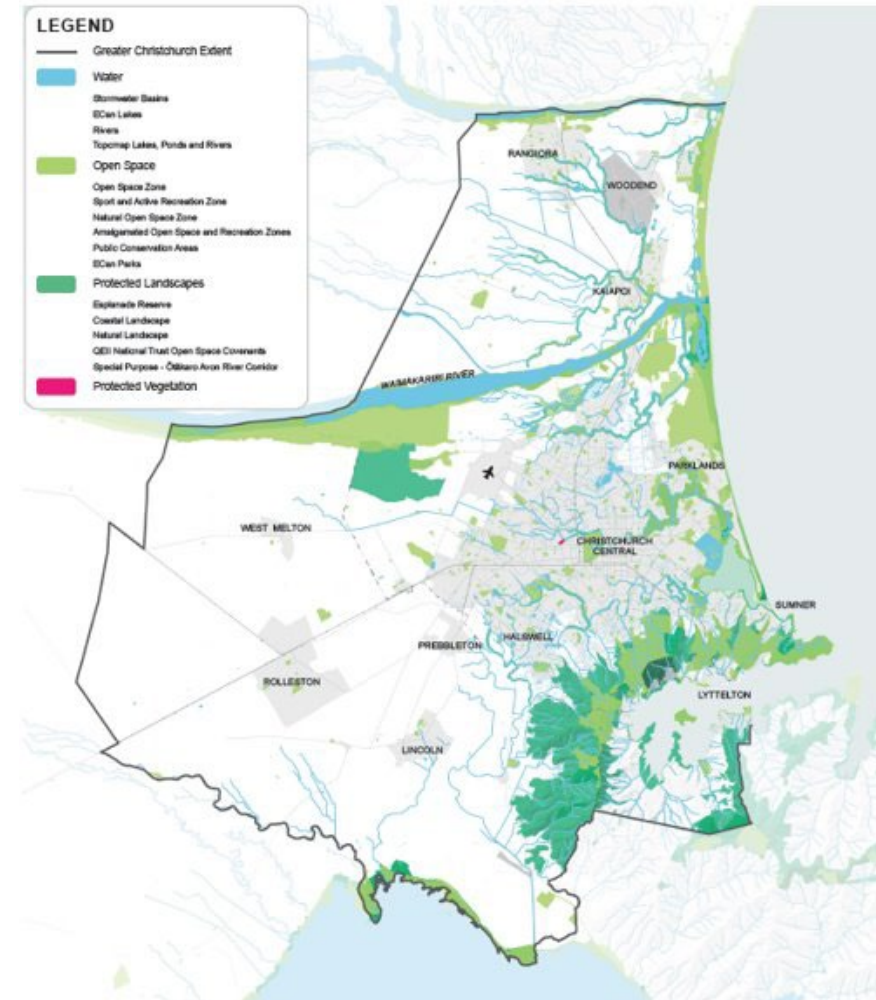
- Full Council Workshop
- CSC Meeting to recommend to Council adopt Final Draft
- Comms Plan – how to use the BGN Plan
- Community consultation
- Present feedback to
 - Kāi Tahu
 - Grow Well Whaiora Steering Group
 - Full Council
- Make Changes
- Final BG Network Plan adopted
- Implement Outcome Delivery Mechanisms

QLDC Blue Green Network Plan



What is a Blue Green Network?

- > The Blue-Green Network is the grouping of all the parks, open spaces, connections, and accessible waterways that deliver a variety of educational, recreational, ecological, cultural, landscape and health benefits.
- > The Blue Green Network will set out the level of provision of open space and connections needed in each community to deliver a sustainable quality open space network.
- > It will respond to the anticipated growth and provide the community with access to a range of recreational, social, cultural, and environmental experiences.



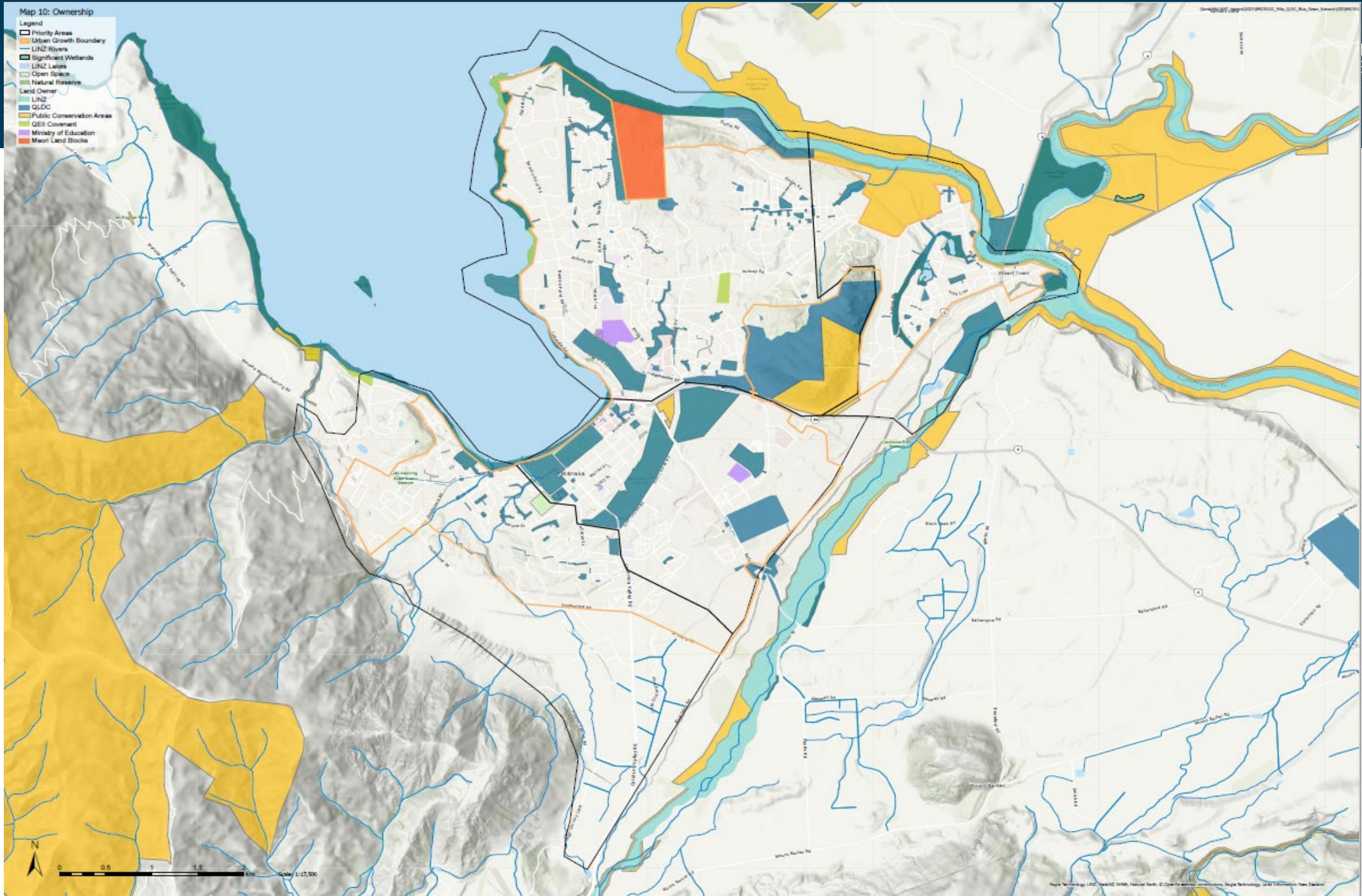
Why are we doing this?

- > Provide a **framework for a well-connected, diverse, and inclusive network** of open spaces and blue networks.
- > To create **sustainable, resilient, and liveable urban environments** that benefit both **people and nature**.
- > Enhance the **quality of life**, provide recreational opportunities, **preserve natural resources**, promote **community identity**, and foster **social equity** within a community.
- > To guide the **development, management, and utilisation** of the blue green network and used to **determine and prioritise spending**.



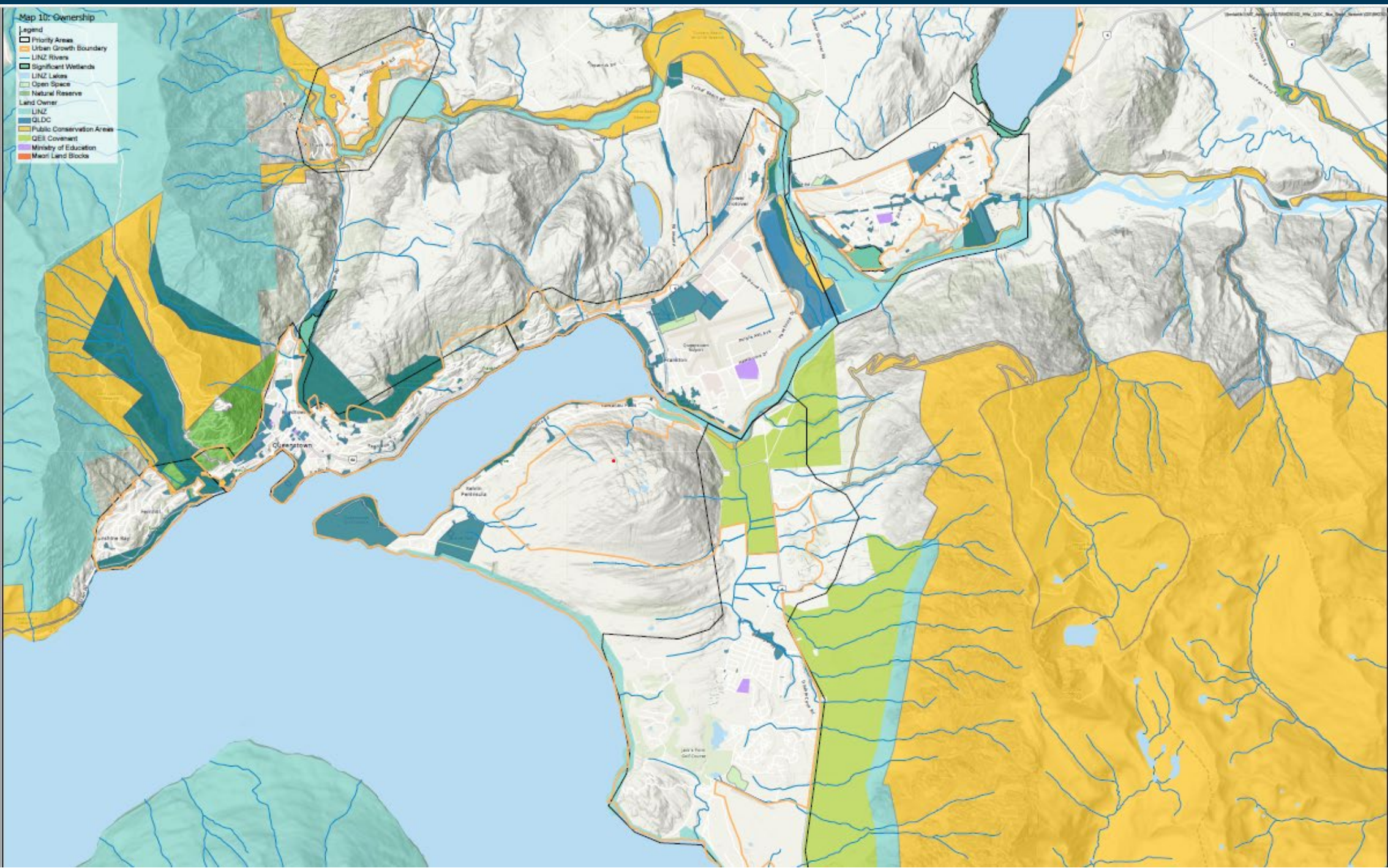
Map 10: Ownership

- Legend
- Priority Areas
 - Urban Growth Boundary
 - LINZ Rivers
 - Significant Wetlands
 - LINZ Lakes
 - Open Space
 - Natural Reserve
 - Land Owner
 - LINZ
 - QLDC
 - Public Conservation Areas
 - QEII Covenant
 - Ministry of Education
 - Mean Land Blocks

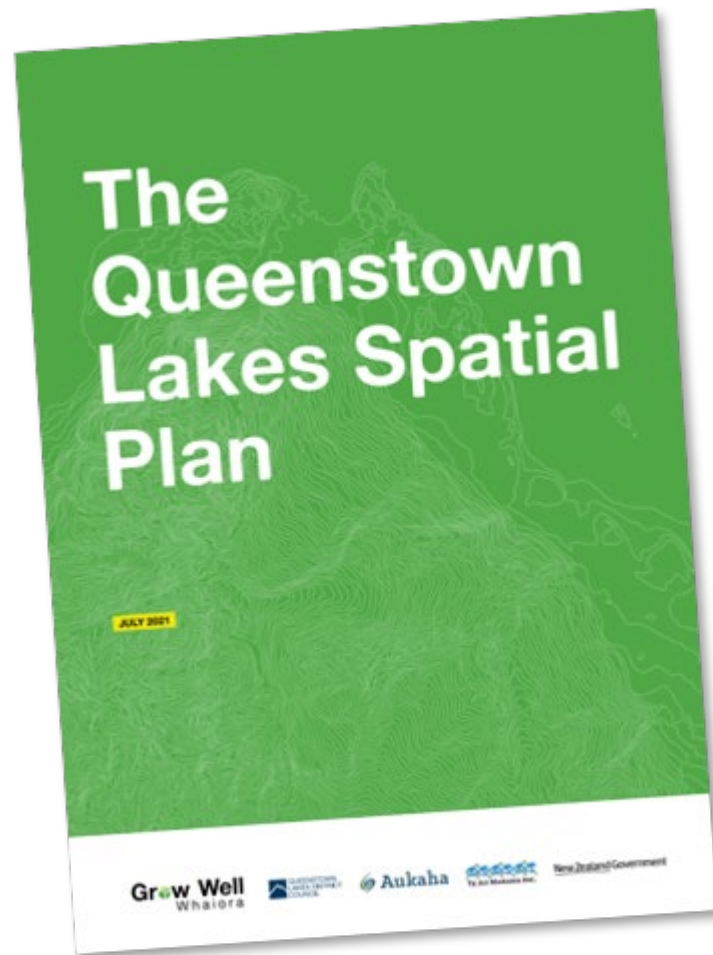


Map 10: Ownership

- Legend
- Priority Areas
- Urban Growth Boundary
- LINZ Rivers
- LINZ Lakes
- Significant Wetlands
- Open Space
- Natural Reserve
- Land Owner
- LINZ
- QLDC
- Public Conservation Areas
- QEII Covenant
- Ministry of Education
- Māori Land Blocks



How does this align with other QLDC plans?



GOAL	Grow Well Whaiora				
PRINCIPLES	HAUORA WELLBEING Decisions about growth recognise social, economic, environmental and cultural considerations	AUMANGEA RESILIENCE Ensuring communities and visitors are resilient to shocks of the future, including adapting to climate change	WHAKAUKU SUSTAINABILITY Programmes and activities are delivered according to sustainable development principles and work towards zero emissions		
	CONSOLIDATED APPROACH AND SPATIAL ELEMENTS: Illustrate how and where the area will grow				
OUTCOMES	Consolidated growth and more housing choice	Public transport, walking and cycling is the preferred option for daily travel	A sustainable tourism system	Well-designed neighbourhoods that provide for everyday needs	A diverse economy where everyone can thrive
	STRATEGIES to achieve the outcomes				

Spatial Plan Relationships

Delivering the Spatial Plan

Delivering the Spatial Plan will require coordination and collaboration between the Partners, and will build on the process used to develop this Spatial Plan.

The Queenstown Lakes Partnership will develop a draft joint work programme to advance the priority initiatives identified in the Spatial Plan. A range of mechanisms will deliver the initiatives, including budget.

An implementation plan will be developed that sets out responsibilities and timeframes for delivering the initiatives. This will be reviewed annually to progress delivery of the joint work programme.

The Spatial Plan will be reviewed and updated in 2024.

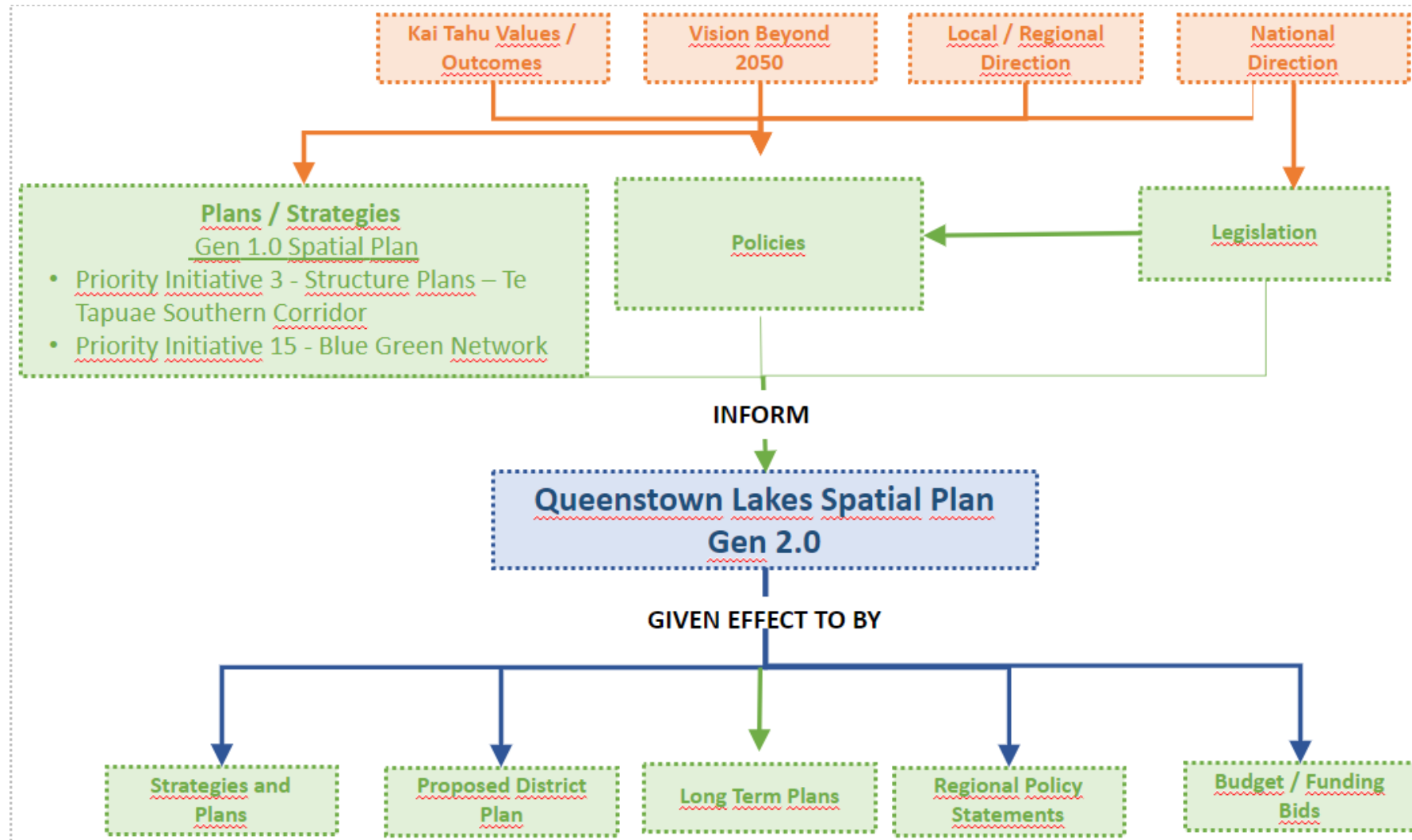
Grow Well Whalora Partnership: Joint Work Programme					
Spatial Plan Outcomes	Consolidated growth and more housing choice	Public transport, walking and cycling in the preferred option for daily travel	A sustainable tourism system	Well developed neighbourhoods that meet community needs	A diverse economy where everyone can thrive
1. Revise zoning and other levers to enable higher densities and more flexible use of land within the existing and new urban areas in identifiable locations identified in the Spatial Plan.	6. Complete and implement the Queenstown Transport Business Case including the delivery of the frequent transit network	11. Develop and implement a Destination Management Strategy to sign, decrease making and investment with sustainable development principles.	16. Identify, update, and implement Community Facilities, Parks and Recreation and Community Walking strategies and plans	20. Develop an Economic Diversification Plan	25. Support the Regional Economic Development Network to continue to deliver nationally connected initiatives.
2. Use the Grow Well Whalora Urban Growth Partnership to improve alignment and coordination to unlock joint priority development areas, including: <ul style="list-style-type: none"> Lakeside Plan Mile Urban Corridor Queenstown Teahouse to Transition Corridor Southern Corridor Whakapa Teahouse to Three Parks Corridor 	7. Complete and implement a noise abatement plan for Queenstown including best demand management measures	12. Implement a try on visitor accommodation across the Queenstown Lakes	17. Develop a Grow-over design guide to improve the quality of built form and enhance key town cultural values.	26. Review and update the zoning of centres and major employment locations in the District Plan to be consistent with the Spatial Plan	31. Establish a Queenstown Lakes utility infrastructure providers forum to improve coordination with Spatial Plan outcomes and resources of the networks
3. Identify structure plans for future urban areas identified in the Spatial Plan, including identifying infrastructure triggers needed to enable and sequence new growth areas. Ensure the development of future urban areas prioritise the delivery of affordable housing outcomes.	8. Investigate and produce the extension of the frequent transit network to Hema/Kalbar Park and the Southern Corridor	13. Develop and implement a Tourism Based Demand Strategy to encourage the use of public and active modes by visitors	14. Investigate establishing a high-speed public transport network that provides for both local residents and visitor needs.	21. Identify and ensure the efficient operation of main freight routes by developing a Network Operating Plan	32. Identify and ensure the efficient operation of main freight routes by developing a Network Operating Plan
4. Use of alternative funding and financing tools to accelerate infrastructure delivery	9. Complete the Whakapa and Upper Clutha Active Travel Networks	14. Investigate establishing a high-speed public transport network that provides for both local residents and visitor needs.	15. Investigate establishing a high-speed public transport network that provides for both local residents and visitor needs.		
5. Establish a coordinated programme that draws together central government, community providers, iwi and council projects and initiatives to improve affordable housing outcomes	10. Investigate establishing Upper Clutha and Sub-Regional public transport networks.				

MONITORING PROGRAMME
Tracking Progress of the delivery of the Priority Initiatives
Tracking growth against the spatial elements and outcomes of the Spatial Plan

3. Undertake structure plans for future urban areas identified in the Spatial Plan, including identifying infrastructure triggers needed to enable and sequence new growth areas. Ensure the development of future urban areas prioritise the delivery of affordable housing options.

15. Develop open space network plans to deliver the Blue-Green Networks.

Spatial Plan Relationships



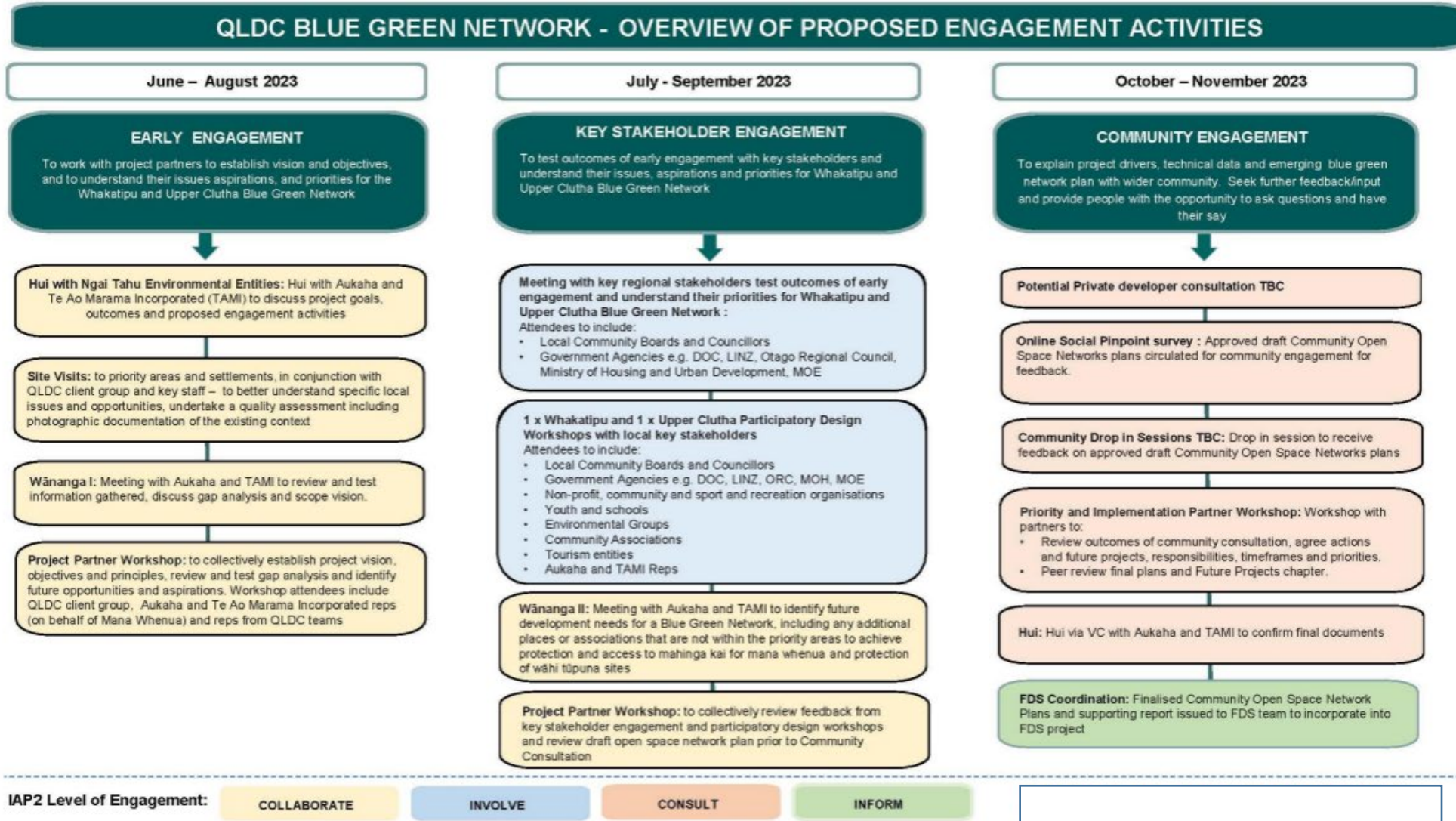
Blue Green Network Programme

■ MEETING*
 ■ WORKSHOP
 ○ DESIGN WORKS
 ● DELIVERABLES

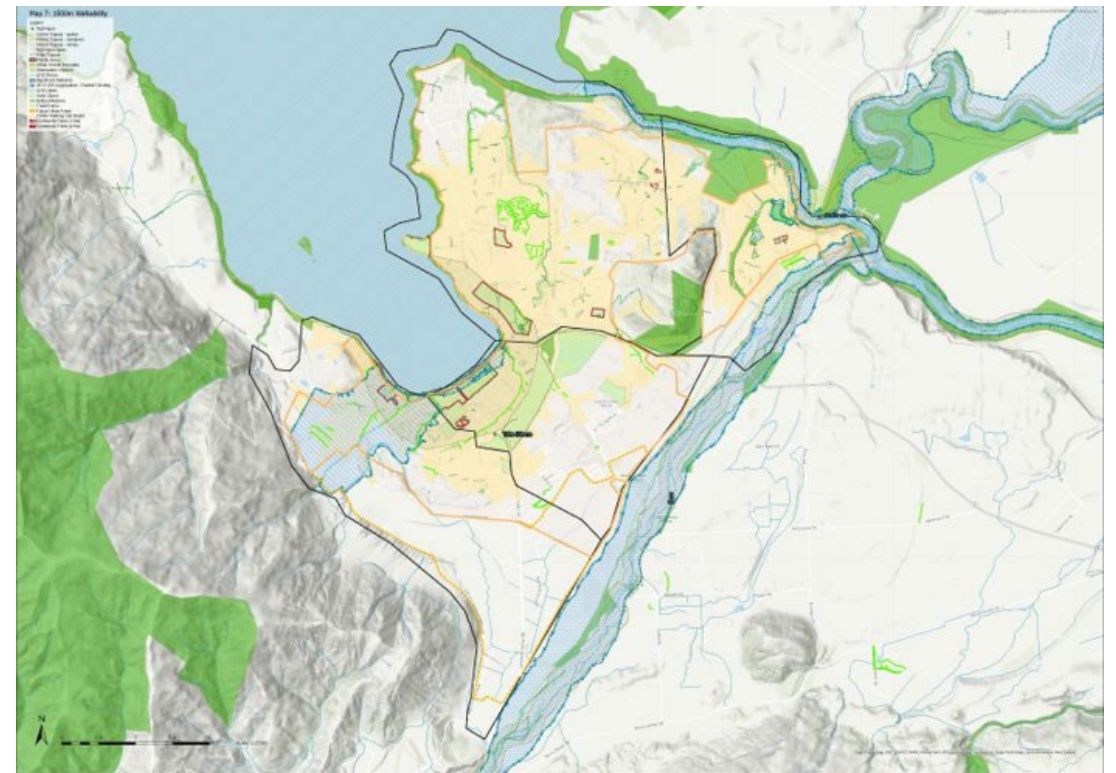
* Fortnightly project meetings assumed throughout project



Engagement

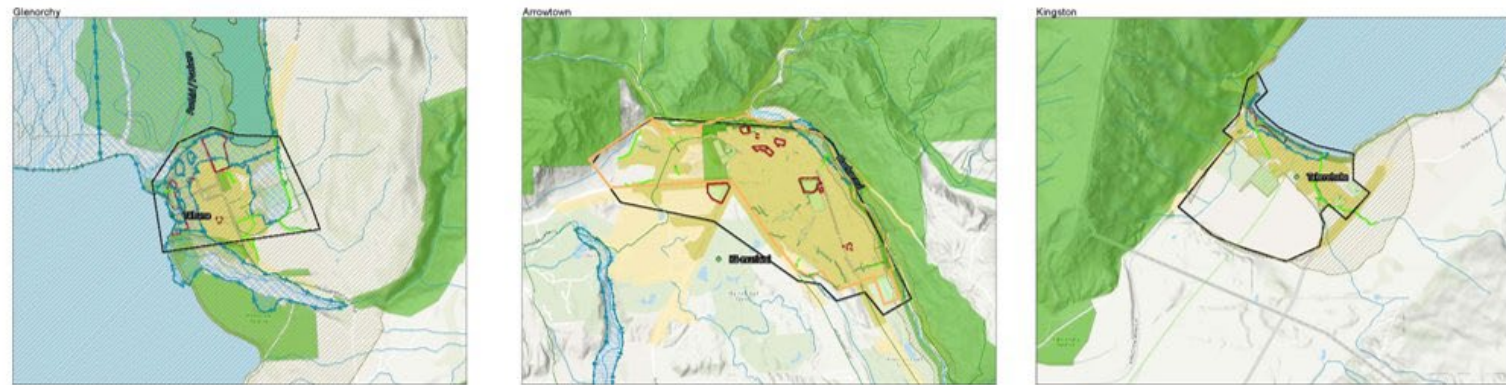
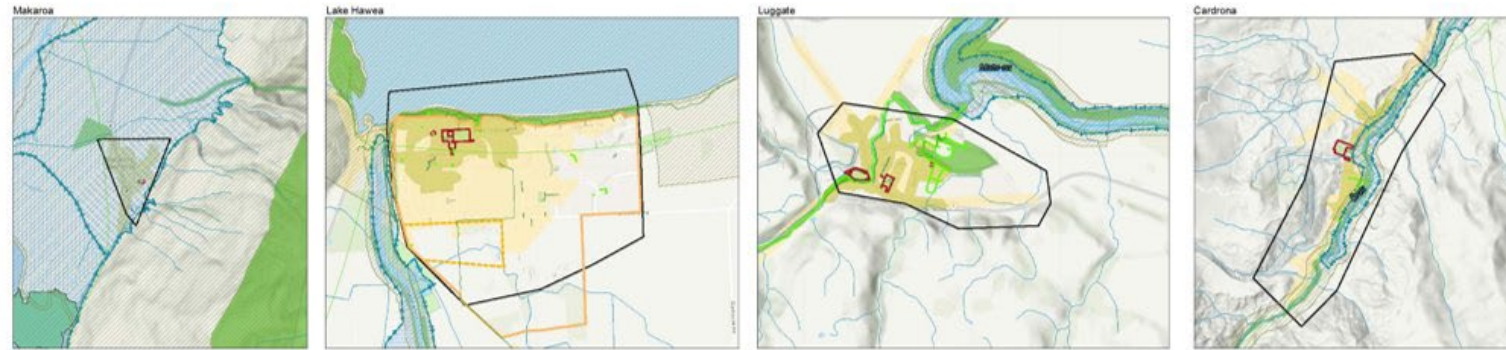


Community Open Space Network Plans



Community Open Space Network Plans

UPPER CLUTHA



- Legend
- Ngā Ngā
 - Ngā Ara Tapaka - Ngā ara
 - Ngā Ara Tapaka - Rāwhiri
 - Ngā Ara Tapaka - Kōwhiri
 - Ngā Ngā (line)
 - Ngāi Tipirika
 - Priority Areas
 - Urban Growth Boundary
 - Stormwater Channel
 - LNZ Rivers
 - Significant Wetlands
 - 2012 ORC Aggregation - Rainfall Flooding
 - LNZ Lakes
 - Open Space
 - Natural Reserve
 - Transit/Trails
 - Future Urban Areas
 - 1500m Walking Catchment
 - 300m Walking Catchment
 - Local Park (0.5000km^2)
 - Local Park (1.0000km^2)
 - Community Park (0.1000km^2)
 - Community Park (0.1000km^2)



QUESTIONS?

