

Queenstown Lakes District Council – RM240141: Cardona Valley

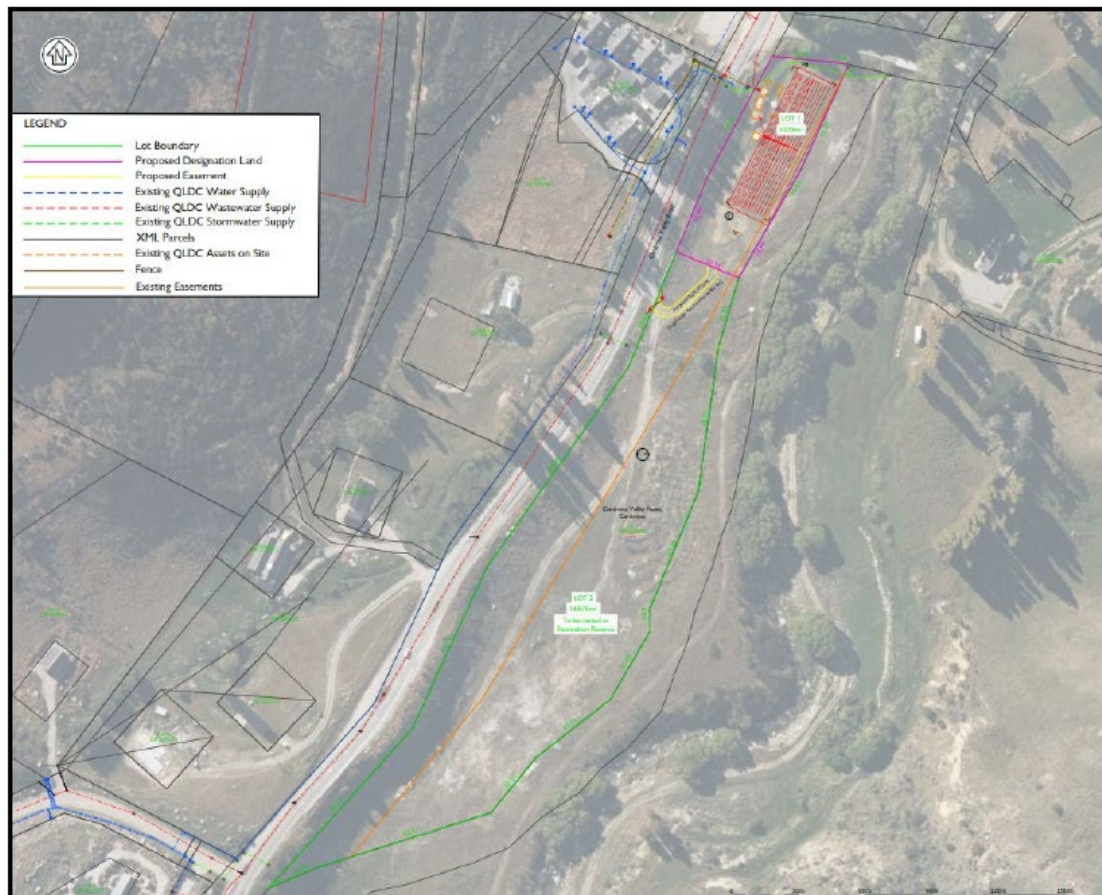


Figure 1: Scheme plan of RM240141. Lot 1, wastewater infrastructure, outlined in pink and Lot 2, Recreation Reserve, outlined in green.

Queenstown Lakes District Council – RM240413: Albert Town

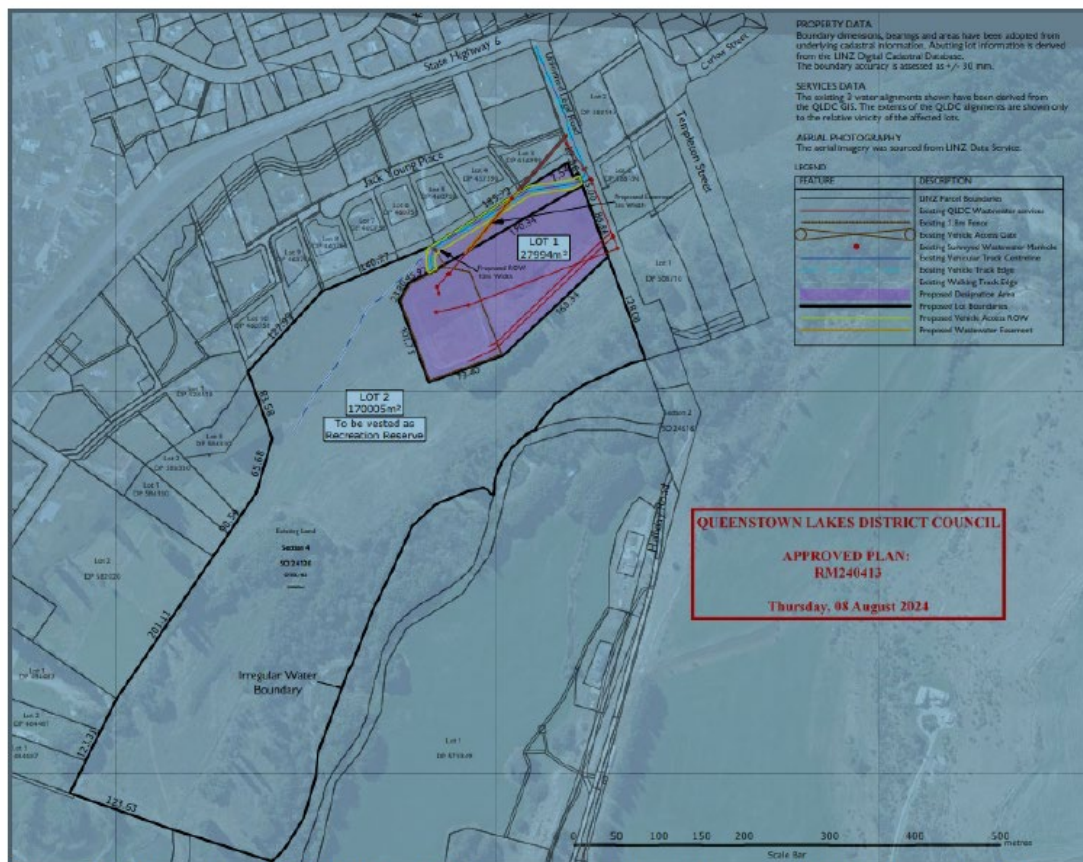


Figure 2: Scheme plan of RM240413. Lot 1, wastewater infrastructure, and Lot 2, Recreation Reserve, boundaries outlined in black.

Aspiring Tourism Holdings Limited – RM230697: Makarora

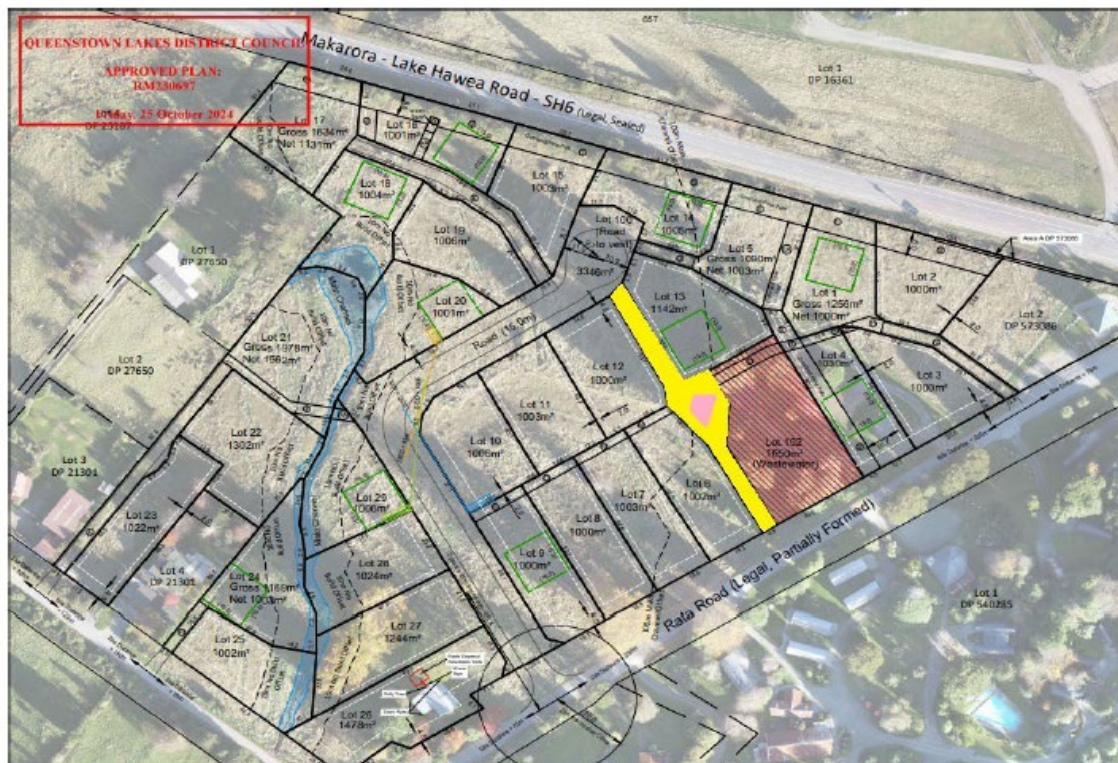


Figure 3: The Local Purpose Reserve (Access), pictured yellow is adjacent to the wastewater reserve connecting the cul de sac to Rata Rd. The approximate location of the Historic Site is shown in pink.

Northlake Investments Limited – RM240663: Northlake

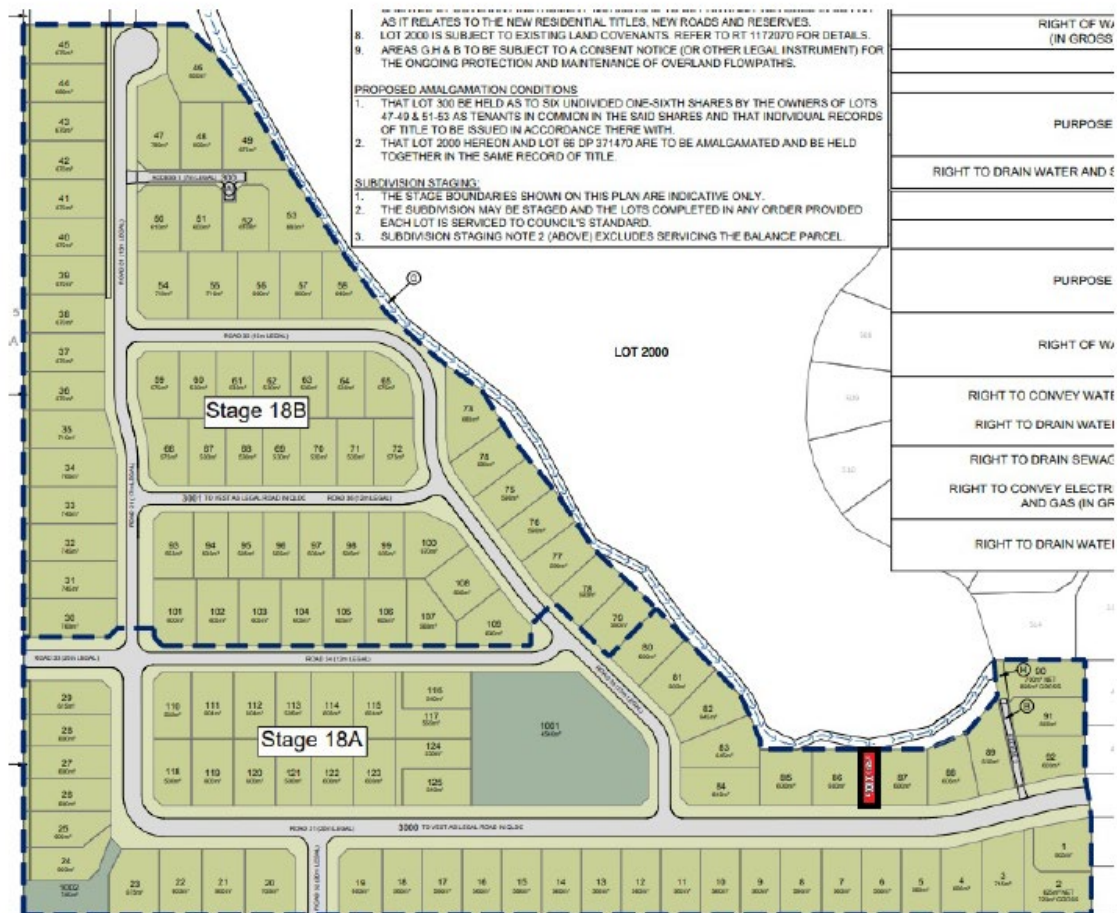


Figure 4: Scheme plan for RM240663 with Local Purpose Reserve (Access) Lot 1000 shown red.



Figure 5: Scheme plan for RM240663 including the pedestrian/cycle trail, that is to be constructed prior to s224c of the final stage of the development.