

Community & Services Committee

16 September 2025

Report for Agenda Item | Rīpoata moto e Rāraki take [3]

Department: Community Services

Title | Taitara: Draft Kawarau Riverside Reserve Management Plan 2024

Purpose of the Report | Te Take mō te Pūroko

The purpose of this report is to consider recommending to Council that the Draft Kawarau Riverside Reserve Management Plan is approved for public notification.

Recommendation | Kā Tūtohuka

That the Community & Services Committee:


1. **Note** the contents of this report;
2. **Recommend to Council** to approve the Draft Kawarau Riverside Reserve Management Plan for public notification in accordance with section 41(6) of the Reserves Act 1977; and
3. **Recommend to Council** to select three Councillors to be appointed to a panel to hear and consider submissions received, subject to the Draft Kawarau Riverside Reserve Management Plan being approved for public notification.

Prepared by:



Name: Dominic Harrison
Title: Parks and Reserves
Planner
22 August 2025

Reviewed and Endorsed by:



Name: Dave Winterburn
Title: Parks Manager
26 August 2025

Reviewed and Authorised by:



Name: Ken Bailey
Title: General Manager
Community Services
26 August 2025

Context | Horopaki

1. Under Section 41 of the Reserves Act 1977 (the Reserves Act), all Recreation Reserves under Council's administration are required to have Reserve Management Plans prepared in accordance with this Act.
2. The Community & Services Committee approved the intention to notify the preparation of a Draft Reserve Management Plan (Draft RMP), for the Kawarau Riverside Reserves on 2 November 2023. The Draft RMP is included [Attachment A].
3. Notification of the intent to prepare a Draft RMP was posted in local print media and on QLDC's social media platforms. An early engagement public drop-in session was hosted at Frankton Beach to gather initial ideas from the community, and further feedback was gathered via the QLDC Let's Talk webpage. These early insights informed the preparation of the Draft RMP.
4. Some key themes from the early feedback were:
 - Pest management (flora and fauna)
 - Improve access and manage trail user conflict
 - Ecological restoration
 - Retain existing mature vegetation (exotic and native)
 - Increased park facilities (BBQs, water fountains, toilets, seating, signage/wayfinding)
 - Recreation amenities (pump track, mountain bike jumps, gym equipment, access to river)
5. A summary of the public feedback with officer responses is included [Attachment B].
6. The Draft RMP describes the general intentions for the use, maintenance, protection, preservation and development of the Kawarau Riverside Reserves, through a vision and a series of objectives and policies. These will act as a guide for Council officers in making both day-to-day and long-term decisions about how the reserves will be used, managed, or developed.
7. The Kawarau Riverside Reserves are comprised of eight land parcels totalling 7.144 hectares. Several additional land parcels have been identified in the Draft RMP as they function as part of the reserve network and therefore should be managed as such. A brief description of the additional land parcels are listed below and are further clarified in Appendix 2 and 3 of the Draft RMP:
 - A parcel of Land Information New Zealand (LINZ) administered land adjoins the Reserves. It currently functions as part of the reserve network. Confirmation from LINZ has been obtained to show the parcel as part of the Reserve area.
 - An additional parcel of QLDC Local Purpose Reserve (Recreation) has also been included as it adjoins the recreation reserve areas and forms part of the reserve network.

- Two QLDC freehold parcels have been shown on the reserve maps as they function as part of the reserve network and are subject to possible future reserve vesting as part of a potential land exchange for Project Manawa.
 - A parcel of Legal Road has also been included as it is a historic parcel that is isolated from other road parcels and forms part of the open space network adjoining the recreation reserve parcels.
8. One larger parcel, the Ivan Young Zoological Gardens, was vested as a Recreation Reserve in 1981. Ivan and Daphne Young were granted a lease over the reserve from 1 April 1983 for 33 years for “the purpose of a parkland for zoological purposes with associated buildings”. Ivan Young passed away in 2013 and Council named the reserve in his honour in 2014. These parcels are shown on the maps [Attachment C].

Analysis and Advice | Tatāritaka me kā Tohutohu

9. The Draft RMP is the first RMP that has been prepared for the Kawarau Riverside Reserves. It captures the vision, character, and intended uses of the Reserves through objectives and policies.
10. Notification of the Draft RMP will allow the public to provide submissions to Council and be heard, if requested, in relation to how the Reserves should be managed.
11. The Draft RMP will be publicly notified for two months, and a hearing will be held if there are submissions received by submitters who wish to be heard.
12. This report identifies and assesses the following reasonably practicable options for assessing the matter as required by section 77 of the Local Government Act 2002.
13. Option 1 Recommend to Council to approve the Draft Kawarau Riverside RMP for public notification.

Advantages:

- Approving the Draft RMP will enable the process to continue by allowing the public to view and formally submit on the plan.
- This ensures there is a clear plan for the future of Kawarau Riverside Reserves that provides a clear management framework for the use and development of the reserve.
- Council will be acting in accordance with the Reserves Act to prepare Reserve Management Plans for Recreation Reserves.

Disadvantages:

- The community will not have the opportunity to provide feedback on the future management of the Reserve.

14. Option 2 Do not recommend to Council to approve the Draft Kawarau Riverside RMP for public notification.

Advantages:

- No Council time or resources required.
- There will be no change to the management of the Reserves.

Disadvantages:

- Council will not be acting in accordance with the Reserves Act.
- There will be no clear plan for how Kawarau Riverside Reserves are managed and developed in the future.
- Council will not meet the community's expectation that an RMP for the reserves will be developed.

15. This report recommends **Option 1** for addressing the matter because this will ensure the use, enjoyment, maintenance, protection, and preservation of the Kawarau Riverside Reserves for the community, visitors, and future generations.

Consultation Process | Hātepe Matapaki

Significance and Engagement | Te Whakamahi i kā Whakaaro Hiraka

16. This matter is of medium significance, as determined by reference to the Council's Significance and Engagement Policy 2024 because of the demonstrated community interest from users of the reserves.
17. The persons who are affected by or interested in this matter are the residents/ratepayers of the Queenstown Lakes district community, users of the reserves, Frankton Community Association, Queenstown Trails Trust, and the immediately adjoining residential neighbours, including the Young family and Remarkables Park Limited, and commercial businesses.
18. The Council has consulted by seeking public feedback, and will publicly notify the Draft RMP under section 119 of the Reserves Act.

Māori Consultation | Iwi Rūnaka

19. The Parks Team is working with iwi to ensure their input is accurately represented. Mana whenua will provide the cultural narrative that will be inserted into the Draft RMP prior to public consultation commencing.

Risk and Mitigations | Kā Raru Tūpono me kā Whakamaurutaka

20. This matter relates to the Community & Wellbeing risk category. It is associated with RISK10005 Ineffective planning for community services or facilities within the QLDC Risk Register. This risk has been assessed as having a high residual risk rating.
21. The approval of the recommended option will allow Council to avoid the risk. This will be achieved by creating a clear plan for how Council intends to provide for and ensure the use, enjoyment, maintenance, protection, and preservation of the reserves.

Financial Implications | Kā Riteka ā-Pūtea

22. There are no financial implications of approving the Draft RMP, other than internal resources to prepare it, which are already accounted for within existing operational budgets.

Council Effects and Views | Kā Whakaaweawe me kā Tirohaka a te Kaunihera

23. The following Council policies, strategies and bylaws were considered:
- Vision Beyond 2050: [Our Vision and Mission - QLDC](#)
 - The Reserves Act 1977
 - Local Government Act 2002
 - Parks and Open Spaces Strategy 2021
 - Significance and Engagement Policy 2021
 - The QLDC Disability Policy: <https://www.qldc.govt.nz/media/kgzbjigr/final-disability-policy-may-2018.pdf>
 - Proposed and Operative District Plan
 - QLDC Tree Policy 2024
 - Queenstown Lakes Climate and Biodiversity Plan 2022 – 2025
24. The recommended option is consistent with the principles set out in the named instruments.
25. This matter is not included in the Long Term Plan/Annual Plan.

Legal Considerations and Statutory Responsibilities | Ka Ture Whaiwhakaaro me kā Takohaka Waeture

26. The Draft RMP has been prepared in accordance with the Reserves Act 1977, which requires Reserve Management Plans to be in place for Recreation Reserves.

Local Government Act 2002 Purpose Provisions | Te Whakatureture 2002 o te Kāwanataka ā-Kiaka

27. Section 10 of the Local Government Act 2002 states the purpose of local government is (a) to enable democratic local decision-making and action by, and on behalf of, communities; and (b) to promote the social, economic, environmental, and cultural well-being of communities in the present and for the future. The community will have the opportunity to provide feedback on the Draft Plan which will assist in shaping the future use and management of the reserves. The RMP will ensure the protection of the values the reserves offer for future generations to continue to enjoy. As such, the recommendation in this report is appropriate and within the ambit of Section 10 of the Act.

28. The recommended option:

- Can be implemented through current funding under the Long Term Plan and Annual Plan;
- Is consistent with the Council's plans and policies; and
- Would not significantly alter the intended level of service provision for any significant activity undertaken by or on behalf of the Council or transfer the ownership or control of a strategic asset to or from the Council.

Attachments | Kā Tāpirihaka

| | |
|---|---|
| A | Draft Kawarau Riverside Reserve Management Plan |
| B | Informal Community feedback summary |
| C | Map of Kawarau Riverside Reserves |



DRAFT KAWARAU RIVERSIDE RESERVE MANAGEMENT PLAN – 2025

**Te Kirikiri Frankton, Queenstown
QLDC**

TABLE OF CONTENTS

| | |
|--|----|
| 1. Introduction | 4 |
| 2. Reserves Description | 4 |
| 3. Description of Primary Users and Activities | 6 |
| 4. Vision | 7 |
| 5. Objectives | 7 |
| 6. Policies | 8 |
| 7. Appendices | 14 |

Other related documents:

Conservation Act 1987
Health and Safety Act 2015
Reserves Act 1973
Resource Management Act 1991

QLDC Alcohol Bylaw
QLDC Art in Public Places Policy
QLDC Operative and Proposed District Plans
QLDC Dog Bylaw
QLDC Events Strategy
QLDC Open Spaces Strategy
QLDC Plaques, Memorials & Monuments Policy
QLDC Disability Policy
QLDC Smoking Policy
QLDC Traffic and Parking Bylaw
QLDC Tree Policy
QLDC Film Permit - for drone use
QLDC Te Kirikiri/Frankton Masterplan 2020

Other relevant parameters for management and decision making:

QLDC Delegations Register – Community & Services Committee
QLDC Licenses, Leases & Permits

Other relevant parameters for management and decision making:

QLDC Delegations Register – Community and Services Committee (CSC)

Process for preparing a reserve management plan in accordance with the Reserves Act 1977:

2 November 2023 CSC approved creating plan
26 February 2024 Notice invited suggestions for the plan
25 March 2024 Suggestions closed
TBC xx xxx 2024 Notice invited submissions on the draft plan
TBC xx xxx 2024 Submissions close
TBC xx xxx 2024 Hearing held (*if required*)
TBC xx xxx 2024 Board recommends adopting plan
TBC xx xxx 2024 Full Council adopts plan

Review:

Generally, reserve management plans should be reviewed at a minimum of 10-year intervals by Parks Officers. This does not necessarily require a rewrite.

1. INTRODUCTION

Reserve Management Plan Purpose

The Reserves Act 1977 requires the Queenstown Lakes District Council (QLDC) to prepare Reserve Management Plans for all land classified as Recreation Reserve under council management or control.

This Reserve Management Plan (RMP) provides a vision for how the Kawarau Riverside Reserves are valued and experienced, currently, and long-term.

Objectives and policies outline the use, maintenance, protection, preservation, and development of the Kawarau Riverside Reserves. These assist with all decision making for the Reserves. Their purpose is to support the implementation of the community's vision for the Kawarau Riverside Reserves.

The Kawarau Riverside Reserves comprise seven adjoining parcels of QLDC administered recreation reserve land. However, there are several adjoining parcels of land that are either freehold QLDC land or LINZ land that form the open space corridor between the residential and Remarkables Park developments and the Kawarau River.

All parcels are currently used by the public and form part of the open space recreation experience. All QLDC land is maintained by QLDC as public open space. Including these parcels within this RMP ensures consistent management of the area. In this

document these parcels will be jointly referred to as the Kawarau Riverside Reserves, or the Reserves, see **Appendix One**.

A remaining section of private land is required by a Planning Tribunal Decision to be vested in QLDC through future subdivision processes. At such a time this is vested, it will be managed in accordance with this RMP see **Appendix 2**.

2. RESERVES DESCRIPTION

The Kawarau Riverside Reserves are for the enjoyment and benefit of the local community, residents and visitors, and to provide open space amenity, and community wellbeing.

They are bounded by the Kawarau River on one side and a mixture of lower-medium density residential and mixed use on the other. The remaining adjoining undeveloped private land is intended to be developed in future with commercial high density development, including a hotel.

The Reserves offer a natural buffer between land zoned in the district plan for urban development and the Kawarau River. They provide the opportunity to interact with the natural environment, access the Kawarau River and enjoy the expansive views of the Remarkables Mountain Range.

A natural green buffer exists between Lake Whakatipu and the Kawarau River, and the urban environment for large portions of the lake and river margins. The Reserves contribute significantly to

this wider blue and green network with the adjoining Frankton Domain to the north west and the Twin Rivers Trail to the north east currently held in road reserve.

A portion of the *Twin Rivers Trail* passes through the Reserves and form part of the Queenstown 'Great Ride' trail network,.

The Reserves are largely undeveloped with the exception of the well used Twin Rivers Trail. There are no formal carparks or public toilets and minimal reserve infrastructure. As such, the primary use is informal recreation and trail users.

The Reserves sit between the two high growth areas of Frankton and the Southern Corridor. The Frankton residential area would benefit from an enhanced reserve area that protects the natural character and connectivity it provides with the natural environment as the adjoining area continues to experience pressure from ongoing urban development. The Reserves provide potential for important Active Travel connections for the Southern Corridor community that should be considered in the ongoing management of the Reserves.

As the adjoining land undergoes continual development, this is an opportunity to protect the existing natural character of the Reserves and enhance them through native revegetation and amenity planting.

Legal Description

The Kawarau Riverside Reserves are situated on a combined area of 7.144 hectares. The Reserves are zoned Open Space & Recreation - Informal Recreation in the QLD Proposed District Plan (PDP) and located partly within Outstanding Natural Landscape (ONL), Outstanding Natural Feature (ONF) and Wāhi Tūpuna,

When the additional parcels, not currently classified as recreation reserve, are included the combined area is approximately 7.9 hectares **see Appendix 3**.

The Reserves are made up of three areas (identified in section 7) known as:

- Ivan Young Zoological Reserve
- Unnamed Reserve (Riverside Road Reserve)
- Kawarau Falls Reserve

Access:

Primary cycle and pedestrian access into the Reserves is via:

- Kawarau Place
- The Twin Rivers Trail

Vehicle access to the Reserves is via:

- Riverside Road
- Two points off Robertson Street

Some reserve parking exists on one of the Robertson St access points opposite Douglas St. - However, there are no formal entry nodes.

Mana Whenua

Placeholder – mana whenua to provide cultural narrative.

Ecology

The Reserves are typically open in nature on the upper terrace with mixed predominantly exotic vegetation being located along the banks of the Kawarau River.

There are small pockets of recently planted native species in the Kawarau Falls Reserve including Kowhai, Lancewoods, Beech, Ribbonwood and Rimu.

The Ivan Young Zoological Reserve has many mature exotic specimen trees. An avenue of mature Silver Birch, planted by the Young family, lines the entrance to the Reserve.

Several pest species are present across the Reserves including Crack Willow predominantly situated on the Kawarau riverbank. There are large areas of blackberry and gorse present with a smaller area of wilding conifers.

History

Ivan Young Zoological Reserve:

The area known as the *Ivan Young Zoological Reserve* was historically used as an unofficial rubbish dumping site. It subsequently became reserve land that Ivan Young, who resided in the adjoining property with his family, restored and enhanced.

The Young family began restoring the reserve in 1965. This consisted of extensive planting of mixed native and exotic species and included providing a safe space for rescued animals.

Ivan Young worked as the Curator for the Parks and Reserves Department at Council, all the while, dedicating his personal time to the restoration of the reserve and the establishment of the zoological gardens.

The reserve was reclassified in 1981 from a Local Purpose Reserve to a Recreation Reserve, reflecting the restoration efforts of Ivan Young and his family.

In 1983 Ivan and his wife Daphne Young obtained a 33-year lease for the reserve area, to operate a parkland for zoological purposes.

Ivan Young passed away in 2013 at the age of 89. In 2014, the reserve was officially renamed the *Ivan Young Zoological Reserve* at an opening ceremony that included the unveiling of a memorial sign highlighting the extensive work and dedication of

Ivan Young and to acknowledge his invaluable contribution to the community.

The high amenity values experienced by visitors to the Ivan Young Zoological Reserve today are in thanks to the vision and dedication of Ivan Young and the continual stewardship of the wider Young family.

Infrastructure

The Riverside Reserves contain minimal reserve infrastructure comprising

- Bench seats
- Dog waste bin
- Fences and gates
- Signage
- There is a wastewater pump station located on the southern corner above the Ivan Young Zoological Reserve.

3. DESCRIPTION OF PRIMARY USERS AND ACTIVITIES

The proximity of the Reserves to the surrounding residential area of Frankton and the connection they provide through to the Kawarau River makes it an important recreation reserve for the Frankton Community.

The Reserves are frequently used by residents and visitors for informal recreation, including walking, running, dog walking, cycling and enjoying views of the surrounding Remarkables Mountain Range.

The *Twin Rivers Trail* that dissects the Reserves provides an important Active Travel Route for commuters accessing Frankton and Queenstown Central. This trail is also highly used by residents and visitors for active recreation, and it forms part of the New Zealand Great Rides.

Leases

The Kidsfirst Kindergarten Frankton has a thirty three year lease that expires in 2049 over part of the Reserve adjoining their premises for access and car parking.

Events

Events such as the Queenstown Marathon utilise the Reserves and the Twin Rivers Trail.

4. VISION

The following vision is the community's overarching long-term outlook for the Kawarau Riverside Reserves:

The Kawarau Riverside Reserves' informal and natural qualities are protected and enjoyed by everyone who visits. A space to encourage physical activity, enhance the Frankton community's connection with the Kawarau River, and encourage the protection and improvement of the Reserves' biodiversity.

5. OBJECTIVES

The following objectives provide a framework to manage the Reserves and support the vision. They are overarching goals to support the Reserves' Purpose and Vision.

Objectives

- 5.1 To support and encourage the Frankton community's connection with and to, the Reserves and the Kawarau River.
- 5.2 To accommodate appropriate activities for all ages and abilities that enhance the community's access to, use, and enjoyment of the Reserves.
- 5.3 To maintain and develop the Reserves in a planned manner as appropriate to achieve quality open space that provides opportunities for enjoyment and a range of uses by residents and visitors.
- 5.4 To protect and enhance the ecological values within the Reserves, through removal of pest species, enhancement of indigenous ecology and succession.
- 5.5 To allow for recreation infrastructure to enhance public use of the Reserves and that positively contributes to the amenity of the area and provides public benefit.
- 5.6 To facilitate mana whenua participation to ensure Kāi Tahu values are embedded in decision making in relation to the management of the Reserves.

6. POLICIES:

The following policies are the actions that support the implementation of the objectives. They guide how all the Reserves will be managed in order to achieve the goals. They are clear, informed, inclusive and achievable.

Policies 6.1

6.1.1 Community

- a) Encourage the community's active participation in planning, maintaining, and enhancing the Reserves.
- b) Encourage community engagement and involvement in planting and caring for the Reserves' vegetation and biodiversity.
- c) Support Kāi Tahu cultural representation, interpretation and expression, such as sculptures and art, where it is relevant to the Reserve and where it sits within its landscape context.
- d) Support community initiatives and activities which uphold the objectives of the Plan.
- e) Support community initiatives and activities that provide ecological and/or educational benefits, such as native planting and wetland restoration.
- f) Consider plantings of productive (food) trees and plants i.e an orchard that benefit the community where the overall natural and informal character of the Reserves is retained.
- g) Support the vesting and classification of the additional land parcels, identified in

Appendix 2, and the management of them in accordance with this RMP.

6.1.2 Recreation

- a) Consider new recreation opportunities where they do not conflict with existing uses and are consistent with the character of the Reserves.
- b) Consider all ages and abilities and safety when new trails and facilities are provided and when existing trails and facilities are upgraded.
- c) Assess new trails based on community benefit, interaction with other reserve uses and long term maintenance.
- d) Enhance public connection to the river.
- e) Support the enhancement of the informal natural characteristics of the Reserve.

6.1.3 Infrastructure

Infrastructure refers to development such as buildings, car parks, fences, structures to support active travel, signage and services.

- a) Consider the development of built structures, as necessary, to provide for the function and support of passive recreation activities on the Reserves for the benefit of the community.

- b) Encourage a collaborative and non-exclusive use of built structures, to limit the built footprint on the Reserves.
- c) Consider the construction of public toilets and shelters on the Reserve, to meet the needs of reserve users.
- d) Enhance connectivity to the existing active transport network to reduce the need for car parking on the Reserves.
- e) Consider structures associated with improving the active travel network and support the co-location of services with this infrastructure to mitigate the effects of built form on the Reserves.
- f) Allow pest control fencing to control and manage rabbits as required.
- g) Support the placement of park furniture i.e., water fountains, picnic tables, seating and BBQs in appropriate locations where they enhance the Reserves for the community.
- h) Improve and rationalise signage and wayfinding, particularly at access points.
- i) Prohibit the use of the Reserves for processing/attenuating offsite stormwater, including any diverted overland flow paths originating from outside the Reserve boundary.

6.1.4 Access

- a) Enhance connectivity to the surrounding urban area and encourage new connections where opportunities arise that benefit the community and reserve users.

6.1.5 Ecology

- a) Enable the ecological values of the Reserves to be enhanced through native revegetation and habitat restoration.
- b) Monitor and control pest species, such as noxious weeds, wilding trees and rabbits, where practicable.
- c) Retain and maintain mature trees both exotic and native, in accordance with the QLDC Tree Policy.

6.1.6 Community Events

- a) Permit the use of the Reserves for community events that are of an appropriate scale.
- b) Ensure that community events do not compromise the primary functions of the Reserves.

6.1.7 Commercial Use, Leases and Licences

- a) Consider commercial recreation opportunities, permits and licenses for

ancillary services where they do not conflict with existing uses and are consistent with the character of the Reserves.

- b) Only consider commercial activities where they support anticipated reserve uses and provide benefit to the Reserve.

6.1.8 Services

- a) Consider the placement and maintenance of utility services where the Reserves will not be materially altered or permanently damaged, and the rights of the public using the Reserves will not be permanently affected.
- b) Site underground utility services to avoid existing and anticipated features, including trees and waterways.

6.1.9 Encroachment

- a) Ensure adjacent properties do not encroach into the Reserves, including by extending landscaping, lawn areas and structures within the Reserves' boundaries, or using the Reserves for the storage of property.
- b) Ensure the Reserves are not used for the permanent storage of private kayaks and watercraft.

- c) Manage the Reserves to ensure they are not used for the dumping of waste, including green waste.

6.1.10 Smoke and Vape Free

Ensure the Reserves are smoke and vape free to promote the health of all users.

DRAFT

Reserve Specific Policies 6.2

6.2.1 Kwarau Falls Reserve

Kwarau Falls Reserve is a linear reserve bordering the Kwarau River, which contains mature bush, a track and has steep banks down to the river. There is an avenue of silver birch and other exotic and native park trees. The historic Brunswick Flour Mill at Kwarau Falls was located very close to this reserve.

The large, undulating open area of the Reserve has seen the emergence of unauthorised bike jumps. This can have an adverse effect on the Reserve, including the loss of valuable open space, damage to natural features, and potential health and safety risks for both users and other visitors.

- a) Support the enhancement of the esplanade reserve adjacent to Ōterotu (Kwarau Falls) to support Kāi Tahu values and build a stronger association with cultural heritage.
- b) Support successional native planting, particularly along the riparian margin to improve biodiversity and protect the water quality of the Kwarau River.
- c) Support the community (or key stakeholders) to develop a plan that formalises the jump area and explores other beginner bike opportunities such as a skills area or pump track.



6.2.2 Unnamed Reserve (Riverside Road Reserve)

The Riverside Road Reserves form a linear reserve area creating an open space corridor between the Kawarau River and the Ivan Young Zoological Reserve to the southwest and private land to the north. It provides an important buffer between the increasingly urbanising environment and the natural water network.

- a) Support the creation of an arrival node that enhances the passive and active recreation purpose of the Reserves and maintains the natural character.
- b) Support the naming of the Reserve to foster community connection to the Reserves.
- c) Consider the development of car parking at the end of Riverside Road to the extent that it does not limit the capacity of the Reserve to provide quality recreation open space. This means there must be consideration to limit hard surfaces and maintain open space and ecological benefits of the Reserves.
- d) Allow for the existing pump station to be relocated and upgraded and require the existing pump station to be decommissioned.

- e) Require the vesting of the remaining private land, identified in **Appendix 2**, to the north of Riverside Road, and for it to be managed in accordance with this RMP.



6.2.3 Ivan Young Zoological Reserve

The Ivan Young Zoological Reserve borders the Kawarau River and contains many mature exotic tree specimens. The Reserve was renamed the Ivan Young Zoological Reserve in 2014 in memory of Ivan Young who transformed the area into a zoological garden.

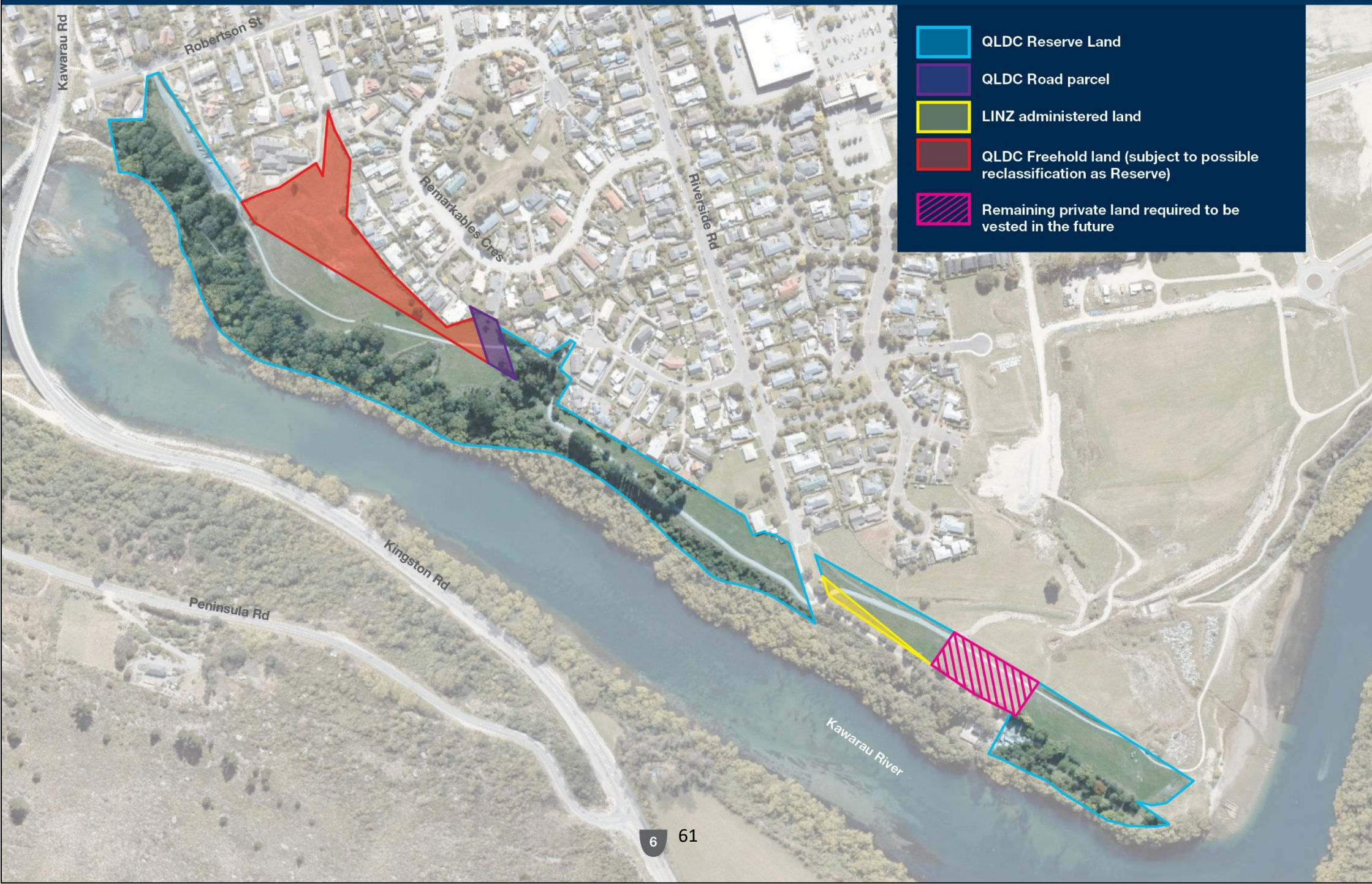
- a) Assess and remove unnecessary fences, gates and signage to encourage public access to the Reserve.
- b) Improve signage, wayfinding and paths to facilitate and enhance the public use and experience of the Reserve.
- c) Acknowledge and retain existing native and exotic mature planting established by Ivan Young, where it provides public benefit.



Appendix 1



Appendix 2 Land Classification



Appendix 3 – Land Parcel Classification Table

| Legal Description / Parcel ID | Land Classification | Area (m ²) | Location |
|---|---|------------------------|-------------------------------|
| Lot 603 DP 24569 | QLDC Recreation Reserve | 5,168 | Riverside Road Reserve |
| Lot 604 DP 24571 | QLDC Recreation Reserve | 1,836 | Riverside Road Reserve |
| Lot 605 DP 25645 | QLDC Recreation Reserve | 260 | Riverside Road Reserve |
| Lot 706 DP 24399 | QLDC Recreation Reserve | 911 | Riverside Road Reserve |
| Lot 701 DP 24131 | QLDC Recreation Reserve | 2,486 | Riverside Road Reserve |
| Section 159 Block I Shotover SD | LINZ administered land | 675 | Riverside Road Reserve |
| Section 167 Block I Shotover SD | QLDC Recreation Reserve | 4,500 | Ivan Young Zoological Reserve |
| Section 29 Block XVIII Town of Frankton | QLDC Recreation Reserve | 50,000 | Kawarau Falls Reserve |
| Lot 19 DP 20484 | QLDC Local Purpose Reserve (Recreation) | 2,398 | Kawarau Falls Reserve |
| Lot 2 DP 412692 | QLDC Freehold | 1,425 | Kawarau Falls Reserve |
| Lot 2 DP 392200 | QLDC Freehold | 10,847 | Kawarau Falls Reserve |
| 3172983 | Road | 1,149 | Kawarau Falls Reserve |

Attachment B: Informal Community feedback summary

| Early Feedback Summary | |
|--|--|
| Public Feedback | Officer Comment |
| | |
| Feedback Themes | Officer Response |
| Fruit tree orchard / herb garden | Consider orchard trees included |
| Keep as many mature trees as possible (and plant more – natives and exotics) | Supported |
| Allowance of a coffee / smoothie van on weekends | Potentially with parameters (commercial activities) |
| Community gardens | Support community initiatives |
| An urban catchment group required for multi-year weed removal / planting project | Support community efforts |
| Educational / environmental elements – bug hotels, natural design features | Support community initiatives |
| Native planting on river edge / beside trail | Supported |
| Rabbit issue | Supported - Pest management |
| Gorse / broom | Supported - Pest management |
| Removal of exotics (also to enhance access to river) | Supported for pest and wilding species to improve riparian edge and access |
| Planting natives for shade | Yes where appropriate |
| Allowance for Men's Shed | Consider community facility |
| Water fountains | Supported in appropriate locations |
| BBQ area | Supported in appropriate locations |
| Toilets | Supported within open spaces strategy park type in appropriate location |
| Picnic tables / seating | Supported in appropriate locations (Ivan Young Reserve) |
| Rain garden to deal with stormwater / wetland area | Not supported. Recreation Reserves not to be used for SW attenuation |
| Unfence the Ivan Young Reserve – shouldn't be separate | Supported to encourage access – consider rabbit fencing |
| Encroachment from neighbouring properties (private compost bins) | Supported |

| | |
|---|---|
| Grass/greenwaste dumping along river | Improve signage |
| Unformed road difficult with a pram | Yes. Consider accessibility in any upgrades and new trails |
| Parking on grass verges | Consider public parking at the end of Riverside Road |
| Entry points to reserve not obvious / improve signage | Yes supported. Improve wayfinding, arrival node, access points |
| No vehicle access to the river | Supported – vehicle access not permitted on reserves without prior permission or easement. |
| Walking / biking conflict – track not wide enough | Improve signage, consider upgrades |
| Ivan Young Reserve looks/feels private and not publicly accessible | Supported- remove fence and improve signage |
| Too many signs at this junction | Review wayfinding |
| Pump track | Consider where it does not conflict with other uses and retains character |
| Open space for sport – cricket/rugby field | Formal sports not supported. Retain/enhance informal natural character |
| Playground (including flying fox) | Not supported, potential for nature play. Urban park nearby. |
| Fenced dog park with agility obstacles | Not supported |
| Fitness equipment / calisthenics | Not popular enough. Could be considered where it does not conflict with other users and retains informal character |
| Boat ramp (for and against) | Not supported |
| Safe access to the river | Yes, supported |
| Trail designed for all abilities | Yes, supported |
| New trail along river edge | Need to consider long term maintenance, liability, impact on ecology, vegetation, water health. Assess if there is a better alignment which avoids tree removals and not increase liability |
| Storage for locals' kayaks etc. | Not supported. Remove existing kayaks stored on reserve. Public reserve shouldn't be used for private storage |
| Better access for residents (walkway between houses and river) | Support improved formalised accesses and connections to the reserve |
| Keep open grassy area | Yes, supported. Retain informal open character on upper terrace |
| Concern the reserves will become an accessway for the RPL development | Prioritising public use over development - no privatisation or encroachment |

| | |
|---|---|
| Steep gradient next to stairs – not pram friendly and difficult on bikes | Slightly out of reserve boundary |
| Surf wave for kayaks | Out of scope - LINZ |
| Keep as off- lead dog area | Out of scope - Dog Bylaw |
| Dog poo bins | Out of scope - RFS through Solid Waste Team |
| No dogs in Ivan Young Reserve (tranquil area) | Out of scope - Dog Bylaw |
| River protection (erosion from jet boats) | Out of scope - LINZ |
| Concern about pressure on reserves / overcrowding from neighbouring development | Out of scope |
| Dog poo – keep reserves dog-free | Out of scope - Dog Bylaw |
| Trucks parking for more than 48 hours outside houses | Out of scope - Enforcement issue |
| RPL has not vested the missing link | Correct. Plan requires the vesting of the remaining section |
| | |
| Email Submissions | Officer Comment |

| | |
|---|---|
| 1. Native ecological enhancement of river terrace/bank. | Supported. Enable ecological enhancement. |
| 2. Current dual use trail widened and weeds/plants cleared from edge of track to improve safety. | Supported. Ensure trails (new and existing) are fit for purpose for all ages and abilities. |
| 3. New informal walking track between Kowarau bridge and Ivan Young Reserve to create loop with dual use track. | Consider new trails taking into account ecology, water health and maintenance. |
| 4. Remove dead/decaying crack willows for public safety. | Control pest species and noxious weeds where practicable. |
| 5. Undesirable plants in the reserve need to be managed and removed such as the yellow iris. | Control pest species and noxious weeds where practicable. |

| | |
|--|---|
| 1. Realignment of trail closer to river. | Consider new trails and evaluate existing trails taking into account ecology, water health and maintenance. |
| 2. Weed removal and opening up access to the riverbanks. | Control pest species/noxious weeds where practicable and allow access to river. |
| 3. Removal of the fences and redundant signage. | Supported. |
| 4. Ivan Young Reserve to be civic gardens with trees, more formal plantings and seating areas. | Community initiatives that provide ecological benefits supported. Picnic tables etc supported in appropriate locations. Ecological enhancement and habitat restoration supported. |
| 5. Naming of the Reserves. | Supported. Kawarau Riverside Reserves |
| 1. Smoke and vape free reserves. | Supported |

Appendix 2 Land Classification

